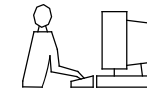


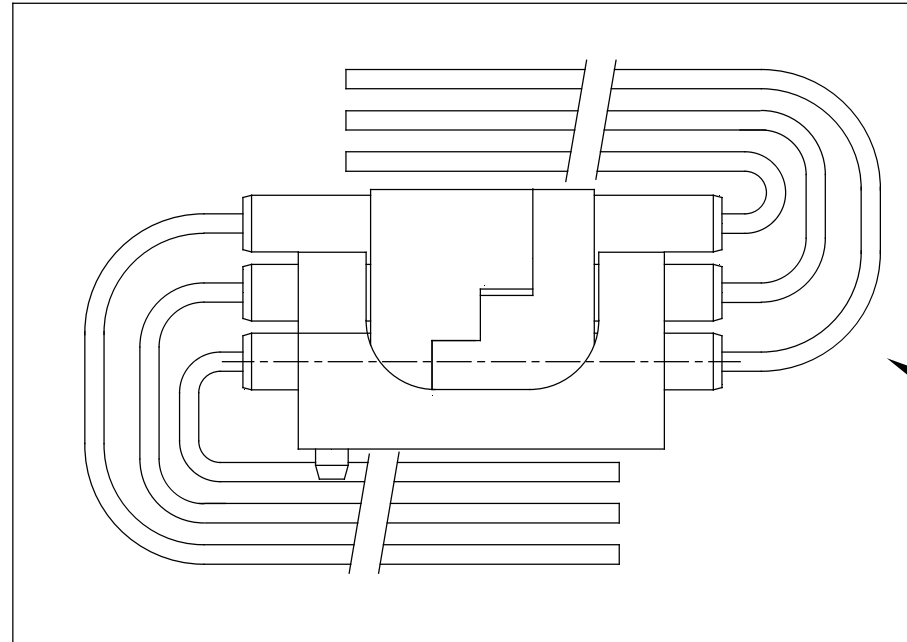
TOLERANCE UNLESS OTHERWISE SPECIFIED	
.X	±0.30
.XX	±0.20
.XXX	±0.10
0.0°	±2°

THIS IS A C.A.D. GENERATED DRAWING
DO NOT MAKE MANUAL REVISIONS TO MASTER.



ISSUE NUMBER	
ORIGINAL	①
WIRE SPECS ADDED C.B. SEP. 09/2016	②
P/N'S CREATED TO REFLECT LH & RH ASSEMBLIES C.B. NOV. 23/2016	③

**CABLE ASSY. SUPPLIED WITH BOTH CONNECTOR MATING HALVES
PRE-FITTED WITH WIRES CRIMPED TO 8.5 A. CONTACT PT. NO. 516-290-590**



**KIT CONTENTS:
SEALED POLY-BAG
520-210-003-001
520-210-003-002
MOUNTING BRACKET**

**520 SERIES MATED CONNECTOR
CABLE ASSEMBLY**

ACAD REFERENCE NO.: 520-210-003ASSY

DRAWN: F.BRIONES

DATE: FEB. 04/2013

CHECKED:

DATE:

SCALE: (IN C.A.D. 1:1)

SHEET 1 OF 1

PART NUMBER:

520-210-003ASSY

ISSUE

1



THIS SERIES FULLY CONFORMS TO
THE EUROPEAN UNION DIRECTIVES
2011/65/EU FOR RoHS COMPLIANCY.



YOUR CONNECTION TO QUALITY & SERVICE

EDAC INC
TORONTO, ONTARIO
CANADA

THESE DRAWINGS AND SPECIFICATIONS
ARE THE PROPERTY OF EDAC INC., AND
SHALL NOT BE REPRODUCED, OR COPIED
OR USED AS THE BASIS FOR THE
MANUFACTURE OR SALE OF APPARATUS
WITHOUT WRITTEN PERMISSION.