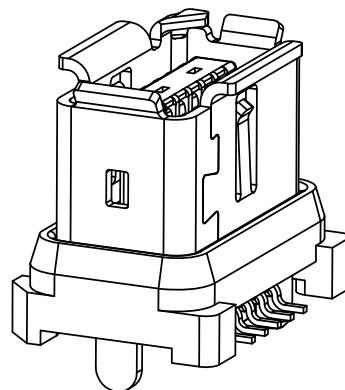
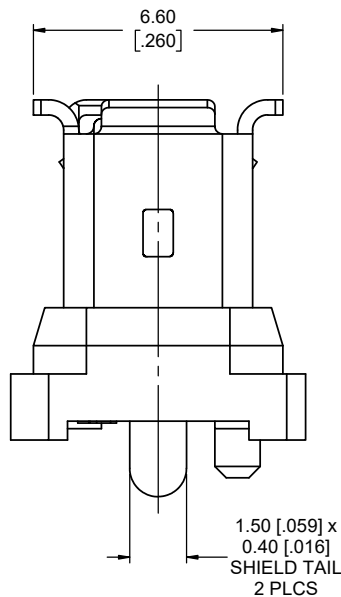
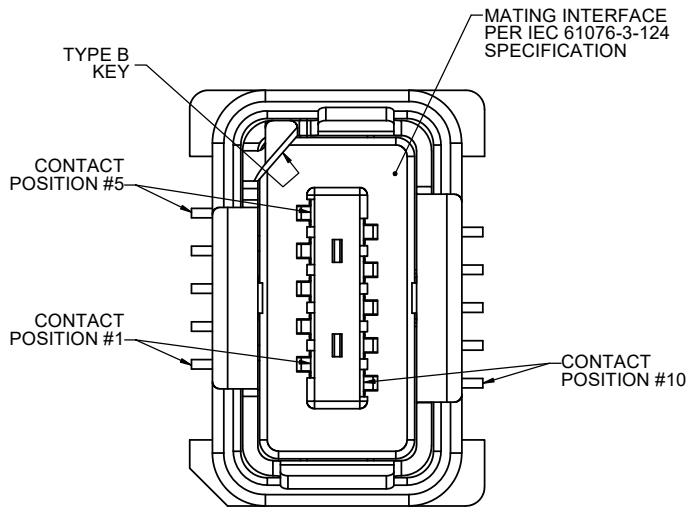




THIS DOCUMENT CONTAINS PROPRIETARY INFORMATION AND SUCH INFORMATION MAY NOT BE DISCLOSED TO OTHERS FOR ANY PURPOSE OR USED FOR MANUFACTURING PURPOSES WITHOUT WRITTEN PERMISSION FROM AMPHENOL CANADA CORP.



ORDERING CODE: ND9 - BS2X - 00

SERIES, IX INDUSTRIAL I/O & Gbit APPLICATIONS

TYPE B KEY

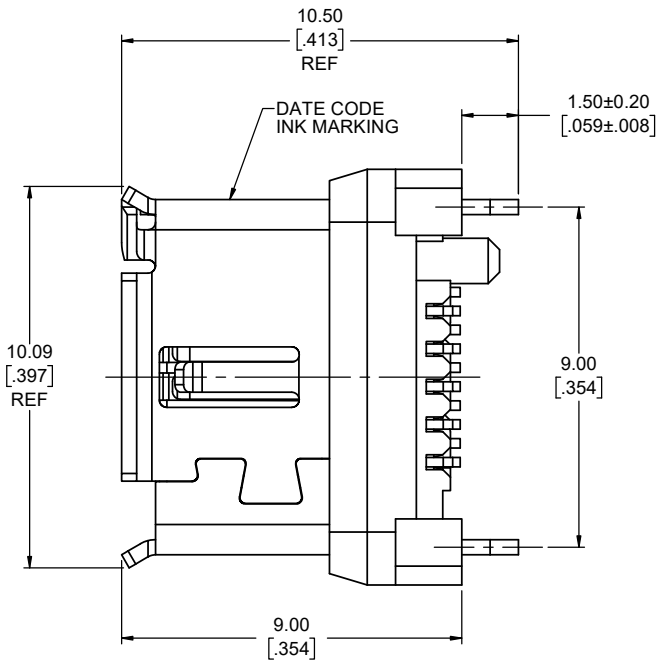
SOCKET / RECEPTACLE

VERTICAL

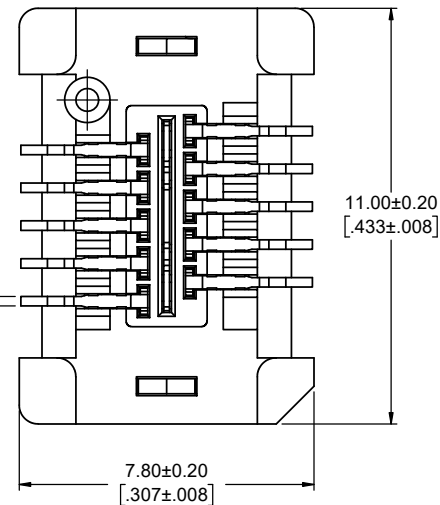
PLATING FOR MATING AREA

- 1 = GOLD FLASH
- 2 = 0.20µm (8µ") GOLD
- 4 = 1.27µm (50µ") GOLD
- 7 = 0.76µm (30µ") PALLADIUM NICKEL WITH GOLD FLASH

STANDARD



0.25 [0.010] x 0.20 [0.008] SMT TAIL 10 PLCS



NOTES:

1. MATERIAL: RoHS COMPLIANT PER EU DIRECTIVE 2011/65/EU AND AMENDMENTS.
 - SHIELD: STAINLESS STEEL, MATTE TIN OVER NICKEL PLATED.
 - INSERTS: HIGH TEMPERATURE RESISTANT ENGINEERING THERMOPLASTIC, GLASS REINFORCED, UL94V-0, BLACK
 - CONTACTS: COPPER ALLOY PLATED WITH GOLD OR PALLADIUM-NICKEL (SEE ORDERING CODE) OVER 1.27µm (50µ") MINIMUM NICKEL ON THE MATING AREA AND MATTE TIN ON THE SMT TAILS.
 - MID-PLATE: STAINLESS STEEL, NICKEL PLATED
2. CONNECTORS ARE PROVIDED IN TAPE & REEL PACKAGING FOR PICK & PLACE PROCESSING AND ARE SUITABLE FOR IR REFLOW SOLDERING OF PIN IN PASTE SHIELD TAILS AND SURFACE MOUNT CONTACT TAILS.
3. DESIGNED TO CONFORM TO REQUIREMENTS OF IEC 61076 PART 3-124 SPECIFICATION. THE TYPE B KEY FEATURE SHOWN IS INTENDED FOR NON-ETHERNET APPLICATIONS. IN SPECIAL SITUATIONS, THE TYPE B KEYED CONNECTORS, USED IN CONJUNCTION WITH TYPE A KEYED CONNECTORS, MAY BE USED AS A METHOD TO SEGREGATE OR CONTROL MATING PLUG INSTALLATIONS IN A COMPLEX ETHERNET APPLICATION.
4. CURRENT RATING: 1.5 AMPERES, VOLTAGE RATING: 50V AC rms OR 60V DC
5. OPERATING TEMPERATURE -55° TO +85°C.
6. DIELECTRIC WITHSTANDING VOLTAGE: 500V DC
7. CONTACT RESISTANCE: 30 MILLIOHMS MAXIMUM.
8. INSULATION RESISTANCE: 500 MEGOHMS MINIMUM.
9. MATING & UNMATING FORCE: 25N (5.6 lbf) MAXIMUM.

REVISIONS			
REV	DESCRIPTION, ECN, EAR NO.	DATE	APP'D
A	PROPOSAL DRAWING (EAR 14720)	JUN7/19	K.L.
B	PRODUCT DRAWING (EAR 14804)	FEB27/20	K.L.

UNLESS SPECIFIED OTHERWISE	DRAWN	B.COPPING	JUN7/19
PRIMARY UNITS MILLIMETERS	CHECKED	K.LAMBIE	JUN7/19
SECONDARY INCHES	M.E. APP'D		
REFERENCE IN PARENTHESES	Q.A. APP'D		
GENERAL TOLERANCES	DWG APPR.		
1 DECIMAL PLACE	ENG. REL. NO.	EAR 14720	
2 DECIMAL PLACES ±0.15	REF.		
3 DECIMAL PLACES	THIRD ANGLE PROJECTION		
ANGULAR DEGREES	DO NOT SCALE DRAWING		

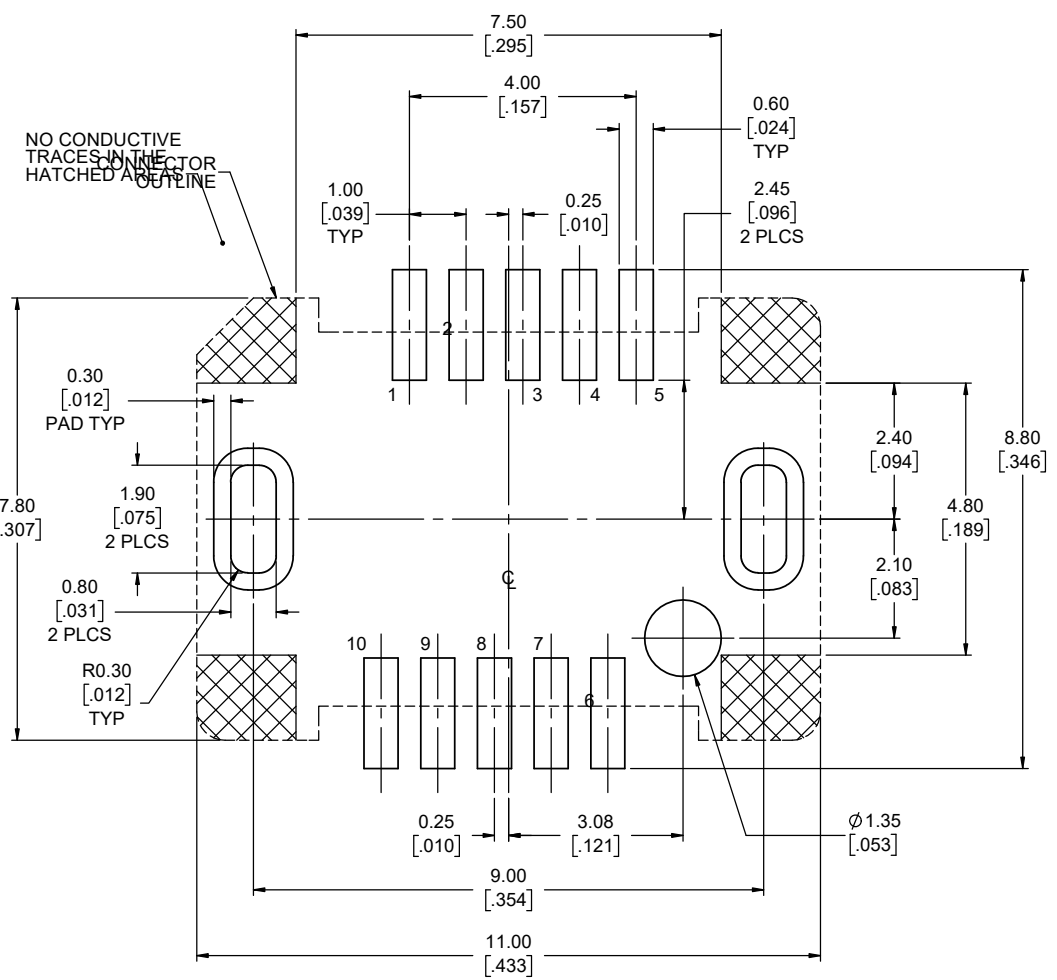
Amphenol Canada Corp.
Commercial Products

IX INDUSTRIAL CONNECTOR, 10 POSITION VERTICAL SMT TERMINATION, CAT 6A HIGH SPEED PERFORMANCE, TYPE B KEY, RoHS COMPLIANT

DWG. NO. **P-ND9-BS2X-00** REV **B**

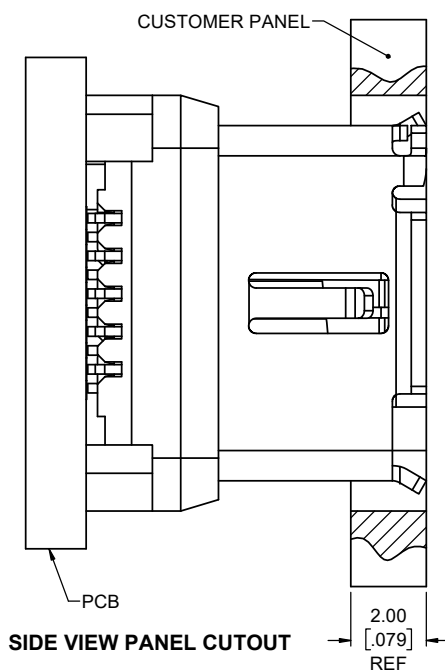
CODE ID NO. 03554 DWG SIZE: X SCALE: 10:1 SHEET 1 OF 2

REVISIONS			
REV	DESCRIPTION, ECN, EAR NO.	DATE	APP'D
A	PROPOSAL DRAWING (EAR 14720)	JUN7/19	K.L.
B	PRODUCT DRAWING (EAR 14804)	FEB27/20	K.L.

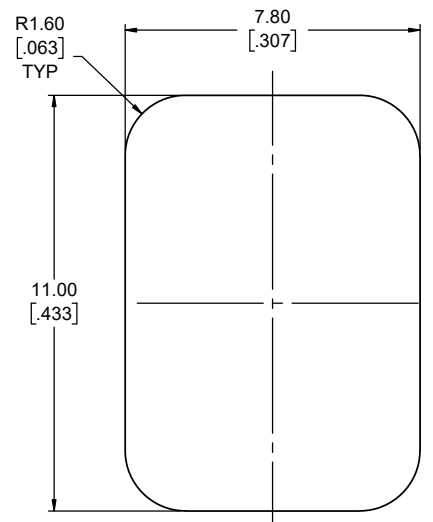


RECOMMENDED PCB LAYOUT
 COMPONENT SIDE OF BOARD
 SCALE 15:1
 GENERAL TOLERANCE ±0.05mm
 FOR THIS VIEW

LOCATE HOLES & PADS
 ⌀ 0.13 [.005] DIA
 POSITION DIMENSIONS
 ARE BASIC



SIDE VIEW PANEL CUTOUT



RECOMMENDED PANEL CUTOUT
 OUTSIDE VIEW OF PANEL

CONNECTOR PIN ASSIGNMENT (IF USED FOR ETHERNET)		
POSITION NUMBER	PIN ASSIGNMENT 10 OR 100 Mbit/S ETHERNET	PIN ASSIGNMENT 1, 2.5, 5 OR 10 Gbit/S ETHERNET
1	TX +	BI_DA +
2	TX -	BI_DA -
3	NOT USED	GND
4	NOT USED	BI_DC +
5	NOT USED	BI_DC -
6	RX +	BI_DB +
7	RX -	BI_DB -
8	NOT USED	GND
9	NOT USED	BI_DD +
10	NOT USED	BI_DD -



UNLESS SPECIFIED OTHERWISE	DRAWN	B.COPPING	JUN7/19
PRIMARY UNITS MILLIMETERS	CHECKED	K.LAMBIE	JUN7/19
SECONDARY UNITS INCHES	M.E. APP'D		
REFERENCE IN PARENTHESES	Q.A. APP'D		
GENERAL TOLERANCES	DWG APPR.		
1 DECIMAL PLACE	ENG. REL. NO.	EAR 14720	
2 DECIMAL PLACES ±0.15	REF.		
3 DECIMAL PLACES	THIRD ANGLE PROJECTION		
ANGULAR DEGREES	DO NOT SCALE DRAWING		

Amphenol Canada Corp.
 Commercial Products

**IX INDUSTRIAL CONNECTOR, 10
 POSITION VERTICAL TERMINATION,
 CAT 6A HIGH SPEED PERFORMANCE,
 TYPE B KEY, RoHS COMPLIANT**

DWG. NO. **P-ND9-BS2X-00** REV **B**

CODE ID NO. 03554 DWG SIZE: X SCALE: 10:1 SHEET 2 OF 2