

DESIGNED AND DIMENSIONED IN MILLIMETERS [INCHES]  
ALL DIMENSIONS REFERENCE

ADM6-XXX-XX.X-XXX-X-X-X-R

DO NOT SCALE FROM THIS PRINT

No. OF POSITIONS  
-10, -20, -30, -40, -50, □-60,  
□\*\*-70, □\*\*-80, □\*\*-90, □\*\*-100  
(PER ROW)

OPTION  
-TR: STANDARD (SEE NOTE 2)  
-FR: FULL REEL (SEE NOTE 3)

LEAD STYLE  
-01.5: 1.5MM  
\*\*-03.5: 3.5MM  
\*\*-06.5: 6.5MM  
\*\*-08.5: 08.5MM

OPTION  
BLANK: NO ALIGNMENT PIN  
-A: ALIGNMENT PIN  
(SEE SHT 3, FIG 3)

SOLDER BALL COMPOSITION  
\*-1: 63.0% TIN/37.0% LEAD  
\*-2: 96.5% TIN/3.0% SILVER/  
0.5% COPPER

PLATING SPECIFICATION

-L: 10µ" SELECTIVE GOLD  
IN CONTACT AREA,  
MATTE TIN ON TAIL  
-S: 30µ" SELECTIVE GOLD  
IN CONTACT AREA,  
MATTE TIN ON TAIL  
\*\*-STL: 30µ" SELECTIVE GOLD  
IN CONTACT AREA,  
TIN/LEAD ON SOLDER TAIL.

(\* = NOT TOOLED)  
(\*\* = NOT ENGINEERING APPROVED)  
□ = ONLY AVAILABLE IN 4 ROW  
(PACKAGING: TAPE & REEL  
(SEE NOTES 1, 2, 3, & 4))

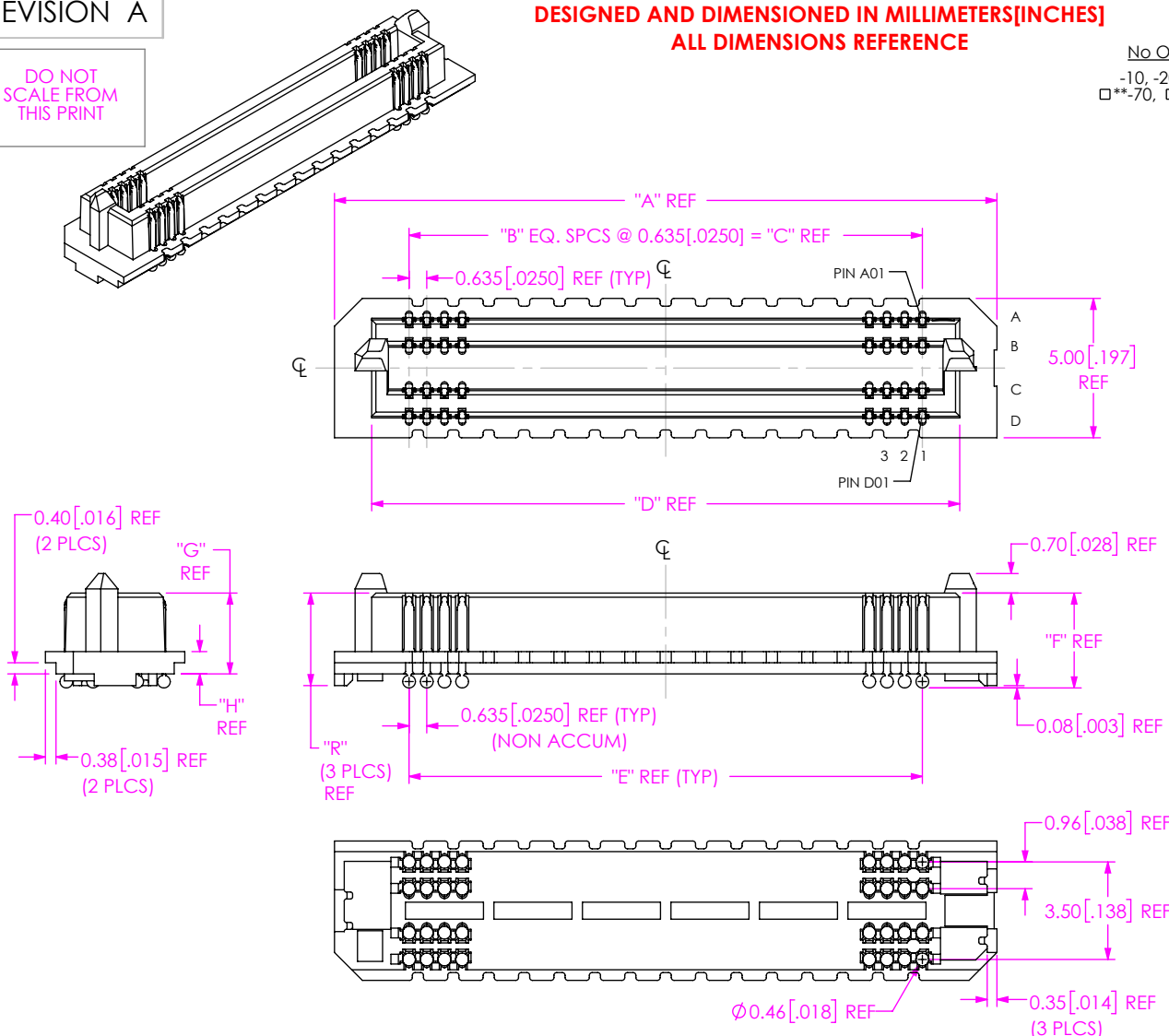


TABLE 1 STACK HEIGHT				
ADF6 LEAD STYLE	ADM6 LEAD STYLE			
	-01.5	-03.5	-06.5	-08.5
-03.5	5.00 [0.197]	7.00 [0.276]	10.00 [0.394]	12.00 [0.472]
-07.5	9.00 [0.354]	11.00 [0.433]	14.00 [0.551]	16.00 [0.630]

TABLE 2					
No. OF POS. PER ROW	"A"	"B"	"C"	"D"	"E"
-10	11.07 [0.436]	9	5.715 [0.2250]	8.395 [0.3305]	5.72 [0.225]
-20	17.42 [0.686]	19	12.065 [0.4750]	14.745 [0.5805]	12.07 [0.475]
-30	23.77 [0.936]	29	18.415 [0.7250]	21.095 [0.8305]	18.42 [0.725]
-40	30.12 [1.186]	39	24.765 [0.9750]	27.445 [1.0805]	24.77 [0.975]
-50	36.47 [1.436]	49	31.115 [1.2250]	33.795 [1.3305]	31.12 [1.225]
-60	42.82 [1.686]	59	37.465 [1.4750]	40.145 [1.5805]	37.47 [1.475]
-70	49.17 [1.936]	69	43.815 [1.7250]	46.495 [1.8305]	43.82 [1.725]
-80	55.52 [2.186]	79	50.165 [1.9750]	52.845 [2.0805]	50.17 [1.975]
-90	61.87 [2.436]	89	56.515 [2.2250]	59.195 [2.3305]	56.52 [2.225]
-100	68.22 [2.686]	99	62.865 [2.4750]	65.545 [2.5805]	62.87 [2.475]

TABLE 3				
LEAD STYLE	"F"	"G"	"H"	"R"
-01.5	3.40 [0.134]	2.900 [0.1142]	0.800 [0.0315]	3.32 [0.131]
-03.5	5.40 [0.213]	4.900 [0.1929]	2.800 [0.1102]	5.32 [0.209]
-06.5	8.40 [0.331]	7.900 [0.3110]	5.800 [0.2283]	8.32 [0.328]
-08.5	10.40 [0.409]	9.900 [0.3898]	7.800 [0.3071]	10.32 [0.406]

FIG 1  
ADM6-30-01.5-XXX-4-X-XR SHOWN  
(SOME CENTER FEATURES REMOVED FOR CLARITY)

- NOTES:
- TAPE & REEL IS STANDARD PACKAGING.
  - TR OPTION ORDERS INVOLVING PARTIAL REEL QUANTITIES MAY BE PACKAGED ACCORDING TO THE SAMTEC PACKAGING EFFICIENCY STDS (SPES) FOUND ON WWW.SAMTEC.COM.
  - FR OPTION ORDERS WILL BE SHIPPED AT THE MAX REEL QUANTITIES, BASED ON OPTIONS SELECTED.
  - ATTACH LABEL TO EACH TAPE & REEL PACKAGE.
  - K-DOT PROVIDED AS STANDARD.

PROPRIETARY NOTE  
THIS DOCUMENT CONTAINS CONFIDENTIAL AND PROPRIETARY INFORMATION AND ALL DESIGN, MANUFACTURING, REPRODUCTION, USE, PATENT RIGHTS AND SALES RIGHTS ARE EXPRESSLY RESERVED BY SAMTEC, INC. THIS DOCUMENT SHALL NOT BE DISCLOSED, IN WHOLE OR PART, TO ANY UNAUTHORIZED PERSON OR ENTITY NOR REPRODUCED, TRANSFERRED OR INCORPORATED IN ANY OTHER PROJECT IN ANY MANNER WITHOUT THE EXPRESS WRITTEN CONSENT OF SAMTEC, INC.



520 PARK EAST BLVD, NEW ALBANY, IN 47150  
PHONE: 812-944-6733 FAX: 812-948-5047  
e-Mail info@SAMTEC.com code 55322

MATERIAL: DO NOT SCALE DRAWING SHEET SCALE: 4:1  
INSULATOR: LCP, COLOR BLACK  
CONTACT: COPPER ALLOY

DESCRIPTION:  
ADM6 ASSEMBLY

DWG. NO.  
ADM6-XXX-XX.X-XXX-X-X-X-R

BY: J RUZZI 6/14/2016 SHEET 1 OF 3

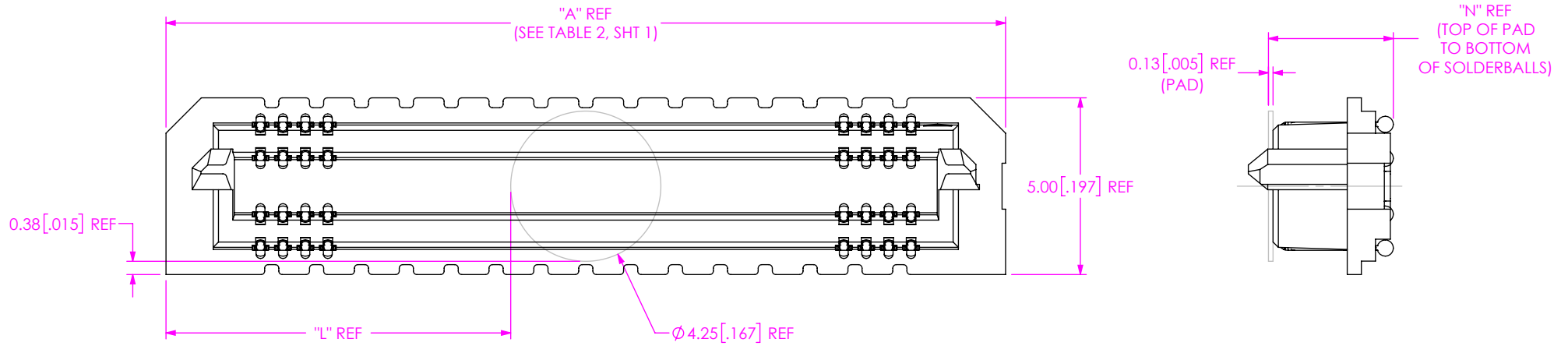


FIG 2  
 POLYIMIDE PAD  
 ADM6-30-1.5-XXX-X-X-XR SHOWN  
 (SOME CENTER FEATURES REMOVED FOR CLARITY)

-No. OF POS PER ROW	"L"
-10 POS	3.41 [0.134]
-20 POS	6.58 [0.259]
-30 POS	9.76 [0.384]
-40 POS	12.93 [0.509]
-50 POS	16.11 [0.634]
-60 POS	19.28 [0.759]
-70 POS	22.46 [0.884]
-80 POS	25.63 [1.009]
-90 POS	28.81 [1.134]
-100 POS	31.98 [1.259]

LEAD STYLE	"N"
-01.5	3.53 [0.139]
-03.5	5.53 [0.218]
-06.5	8.53 [0.336]
-08.5	10.53 [0.415]

**PROPRIETARY NOTE**  
 THIS DOCUMENT CONTAINS CONFIDENTIAL AND PROPRIETARY INFORMATION AND ALL DESIGN, MANUFACTURING, REPRODUCTION, USE, PATENT RIGHTS AND SALES RIGHTS ARE EXPRESSLY RESERVED BY SAMTEC, INC. THIS DOCUMENT SHALL NOT BE DISCLOSED, IN WHOLE OR PART, TO ANY UNAUTHORIZED PERSON OR ENTITY NOR REPRODUCED, TRANSFERRED OR INCORPORATED IN ANY OTHER PROJECT IN ANY MANNER WITHOUT THE EXPRESS WRITTEN CONSENT OF SAMTEC, INC.



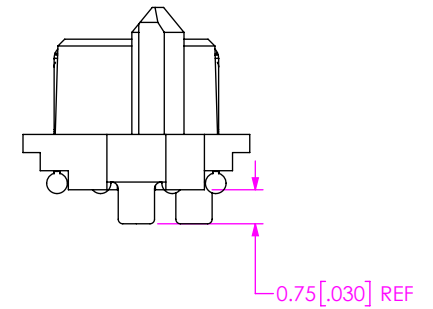
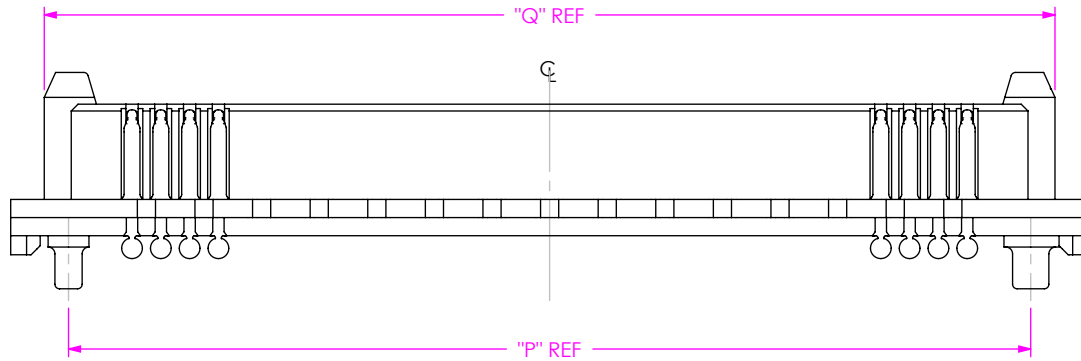
520 PARK EAST BLVD, NEW ALBANY, IN 47150  
 PHONE: 812-944-6733 FAX: 812-948-5047  
 e-Mail info@SAMTEC.com code 55322

DO NOT SCALE DRAWING  
 SHEET SCALE: 6:1

DESCRIPTION:  
 ADM6 ASSEMBLY

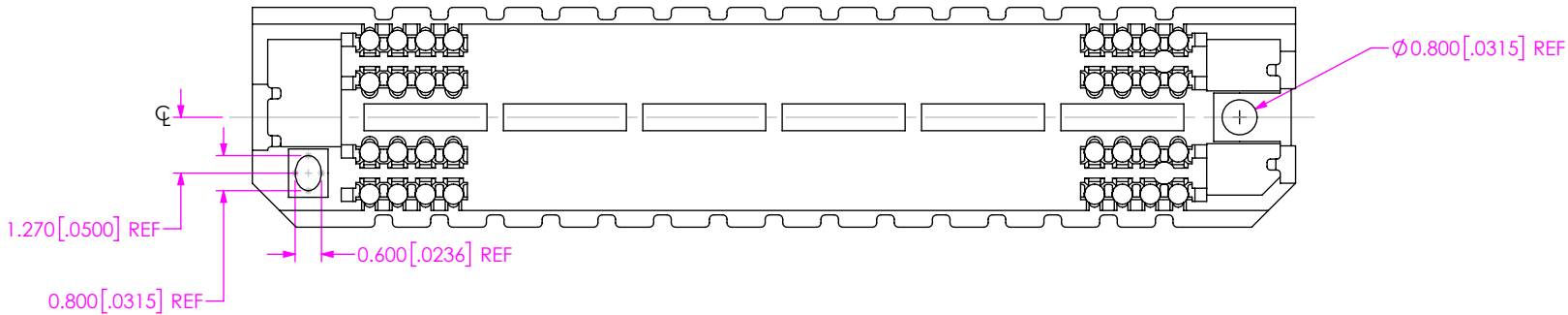
DWG. NO.  
 ADM6-XXX-XX.X-XXX-X-X-XR

BY: J RUZZI 6/14/2016 SHEET 2 OF 3



**TABLE 6**

No OF POS PER ROW	"P"
-10	8.52 [0.335]
-20	14.87 [0.585]
-30	21.22 [0.835]
-40	27.57 [1.085]
-50	33.92 [1.335]
-60	40.27 [1.585]
-70	46.62 [1.835]
-80	52.97 [2.085]
-90	59.32 [2.335]
-100	65.67 [2.585]



**TABLE 7**

No OF POS PER ROW	"Q"
-10	9.59 [0.377]
-20	15.94 [0.627]
-30	22.29 [0.877]
-40	28.64 [1.127]
-50	34.99 [1.377]

**FIG 3**  
 -A: ALIGNMENT PIN  
 ADM6-30-01.5-XXX-4-X-A-XR SHOWN  
 (SAME AS FIG 1, EXCEPT AS SHOWN)  
 (SOME CENTER FEATURES REMOVED FOR CLARITY)

**PROPRIETARY NOTE**  
 THIS DOCUMENT CONTAINS CONFIDENTIAL AND PROPRIETARY INFORMATION AND ALL DESIGN, MANUFACTURING, REPRODUCTION, USE, PATENT RIGHTS AND SALES RIGHTS ARE EXPRESSLY RESERVED BY SAMTEC, INC. THIS DOCUMENT SHALL NOT BE DISCLOSED, IN WHOLE OR PART, TO ANY UNAUTHORIZED PERSON OR ENTITY NOR REPRODUCED, TRANSFERRED OR INCORPORATED IN ANY OTHER PROJECT IN ANY MANNER WITHOUT THE EXPRESS WRITTEN CONSENT OF SAMTEC, INC.



520 PARK EAST BLVD, NEW ALBANY, IN 47150  
 PHONE: 812-944-6733 FAX: 812-948-5047  
 e-Mail info@SAMTEC.com code 55322

DO NOT SCALE DRAWING

SHEET SCALE: 4:1

DESCRIPTION:

ADM6 ASSEMBLY

DWG. NO.

ADM6-XXX-XX.X-XXX-X-X-X-XR

BY: J RUZZI

6/14/2016

SHEET 3 OF 3