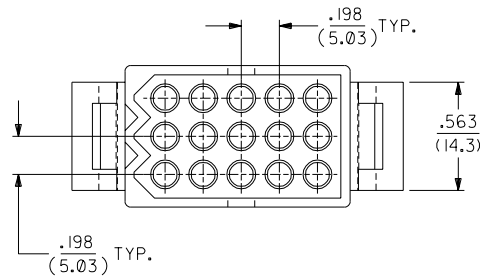
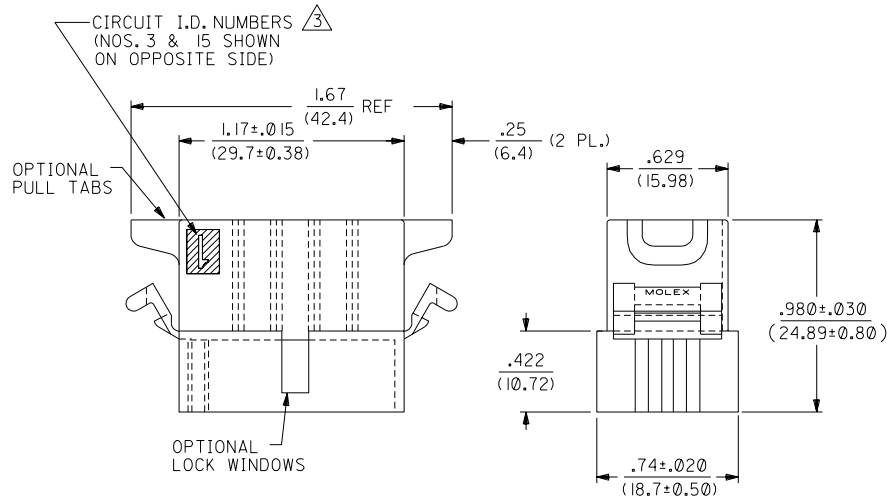
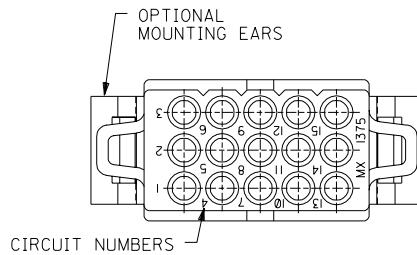
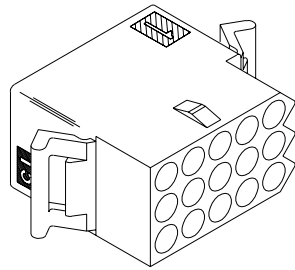
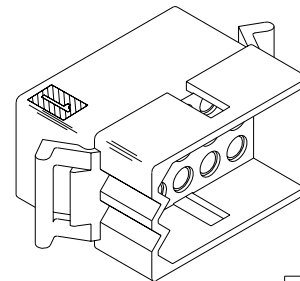


RECEPTACLE



PLUG



AD	REV. DIM'S/ADD NOTES
AC1	REINSTATE P/N UCP2004-1055 ELHAG 12/04/03
AC	REINSTATE P/N UCR2002-0570 COMERCI 02/01/02
AB	OBSOLETE P/N UCR1999-0369 WANG 98-12-09
AA1	REVISED UCR1998-0108 WANG 98-03-27
AA	REVISED PER ECN UG1402 05/07/96 CM
Z	X-RELEASE -P4 ECR #196 1080 3-6-96 RW
Y2	OBS. -R2 VER'S. ECR #195 1080 9/1/95 RW
Y1	ADD -P4 VERSION ECR #194 1080 7-26-94 RW
Y	REVISED PER ECR #193 1080 7-13-94 RW
X	REVISED PER ECR #192 1080 2-28-94 RW
W	REVISED PER ECR #191 1080 1-12-93 RW
V	ADD -P3YW OPTION ECR #190 1080 11-20-89 RW
T	ADD DYED OPTIONS ECR #189 1080 10-06-89 RW

2	AD	S	REVISED & REDRAWN
1	AD	S	ECR #190658 KBW 06-14-89 RW

DIMENSIONS SHOWN (METRIC) INCH		UNLESS OTHERWISE SPECIFIED TOLERANCES: ANGULAR ± 1/2°	
3 PLACE	± .010	---	---
2 PLACE	± .014	± 0.25	---
1 PLACE	---	± 0.35	---
DRAFT WHERE APPLICABLE MUST REMAIN WITHIN DIMENSIONS			
DRWG. BY	CHK'D. BY	SCALE	DATE
KBW	RW	2 : 1	11/14/89
APPR'D. BY	SCALE	DATE	DATE
RAS	2 : 1	11/14/89	11/14/89

▽ = 0	▼ = 0	REVISE ONLY ON CAD SYSTEM
TITLE		
.093/(2.36) HOUSINGS		
PLUG & RECEPTACLE		
15 CIRCUIT, .198/(5.03)Ø		
MOLEX	MOLEX INCORPORATED	SHEET NO. 1 OF 2
LITSE,ILL.	60532	U.S.A. CI/14/89
PART NO.	DRWG. NO.	
SEE CHART	SD-1375-*	
FILE NAME	THIS DRAWING CONTAINS INFORMATION THAT IS PROPRIETARY TO MOLEX INC. AND SHOULD NOT BE USED WITHOUT WRITTEN PERMISSION	DIV. CP
M137515		
504		

PLUG			RECEPTACLE	
ORDER NO	ENG NO		ORDER NO	ENG NO
03-09-2151	1375-P		03-09-1151	1375-R
03-09-2159	1375-P4		03-09-1152	1375-R1
03-09-2158	1375-P7		03-09-1154	1375-R6
03-09-7158	1375-P7BK	OBSOLETE	03-09-1157	1375-R6-1
			03-09-6154	1375-R6BK

LEGEND FOR PLUG:

1375-P***

OPTIONS:

BLANK = W/O EARS, W/ PULL TABS, W/O LOCK WINDOWS
 2 = W/ STANDARD EARS, W/O PULL TABS, W/O LOCK WINDOWS
 4 = W/ PREBENT EARS, W/O PULL TABS, W/ LOCK WINDOWS
 6 = W/O EARS, W/O PULL TABS, W/ LOCK WINDOWS
 7 = W/O EARS, W/ PULL TABS, W/ LOCK WINDOWS
 8 = W/ PREBENT EARS, W/O PULL TABS, W/O LOCK WINDOWS

COLOR:

BLANK = NATURAL COLOR
 AM = AMBER BK = BLACK BU = BLUE
 BN = BROWN GY = GRAY GN = GREEN
 OR = ORANGE RD = RED YW = YELLOW

LEGEND FOR RECEPTACLE:

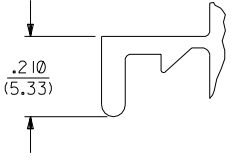
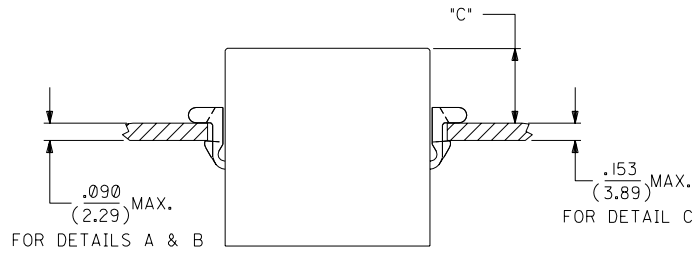
1375-R***

OPTIONS:

BLANK = W/ PREBENT EARS, W/O LOCK RAMPS
 1 = W/O EARS, W/O LOCK RAMPS
 6 = W/ STANDARD EARS & LOCK RAMPS
 6-1 = W/O EARS, W/ LOCK RAMPS

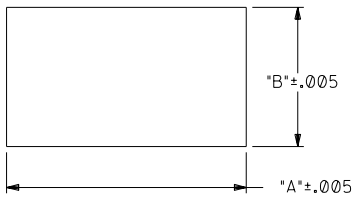
COLOR:

BLANK = NATURAL COLOR
 AM = AMBER BK = BLACK BU = BLUE
 BN = BROWN GY = GRAY GN = GREEN
 OR = ORANGE RD = RED YW = YELLOW



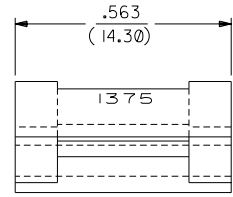
DETAIL A

.093/(2.36) STANDARD MOUNTING EAR (SCALE 4:1)



RECOMMENDED PANEL OPENING

HOUSING	DIM. "A"	DIM. "B"	"C" PREBENT EAR	"C" STANDARD EAR	"C" SPECIAL EAR
PLUG	1.343/(34.11)	.760/(19.30)	.40/(10.2)	.36/(9.1)	
RECEPT. W/ RAMPS	1.240/(31.50)	.725/(18.42)	.41/(10.4)	.37/(9.4)	.31/(7.8)
RECEPT. W/O RAMPS	1.240/(31.50)	.655/(16.64)	.41/(10.4)	.37/(9.4)	.31/(7.8)



DETAIL B

.093/(2.36)PREBENT MOUNTING EAR (SCALE 4:1)

- NOTES
- MOLEX PRODUCT SPEC 02-09 APPLIES.
 - MATERIAL: NYLON TYPE 6/6, 94V-2.
 - ETCHED CIRCUIT I.D. NUMBERS ON SIDE OF HOUSINGS TO BE PRESENT ON PARTS FROM TOOLS BUILT AFTER 2/28/94.

LTR.	REVISIONS	LTR.	REVISIONS	LTR.	REVISIONS

DIMENSIONS SHOWN (METRIC) INCH
 UNLESS OTHERWISE SPECIFIED
 TOLERANCES: ANGULAR ± 1/2°

PLACEMENT	INCH	METRIC
3 PLACE	± .010	---
2 PLACE	± .014	± 0.25
1 PLACE	---	± 0.35

DRAFT WHERE APPLICABLE MUST REMAIN WITHIN DIMENSIONS

DRWG. BY: KBW CHK'D. BY: RW
 APP'D. BY: RAS SCALE: - : -

REVISIONS ONLY ON CAD SYSTEM

TITLE: .093/(2.36) HOUSINGS PLUG & RECEPTACLE 15 CIRCUIT .198/(5.03)0

MOLLEX INCORPORATED U.S.A. SHEET NO. 2 DATE 6/14/89

PART NO. SEE CHART SD-1375-*

FILE NAME: M137515 309 DIV. CP