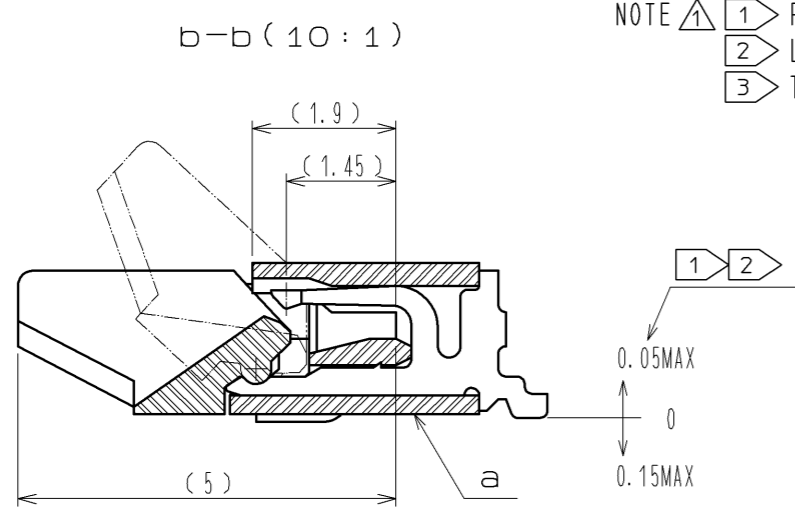
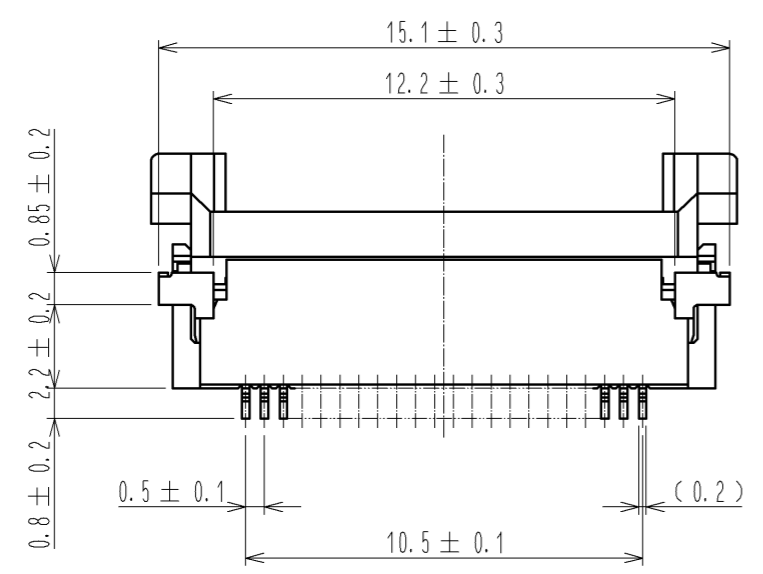
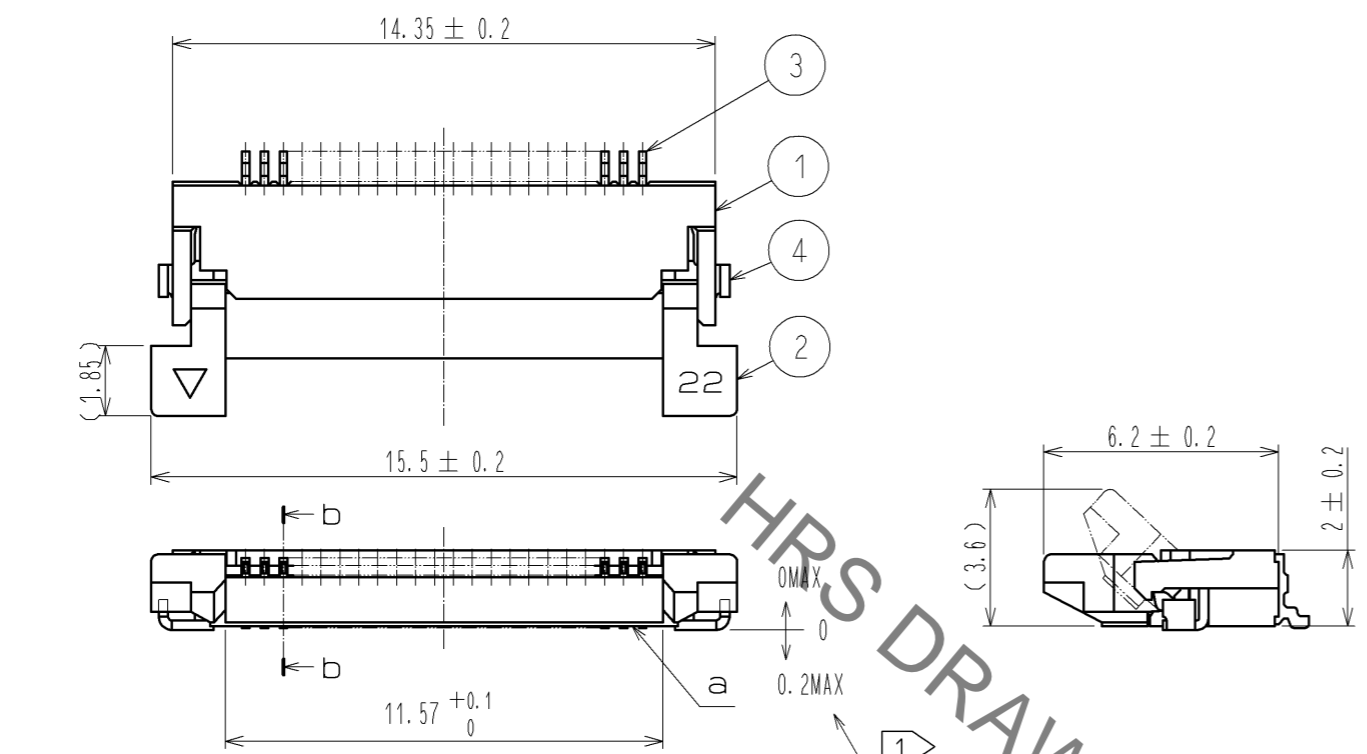
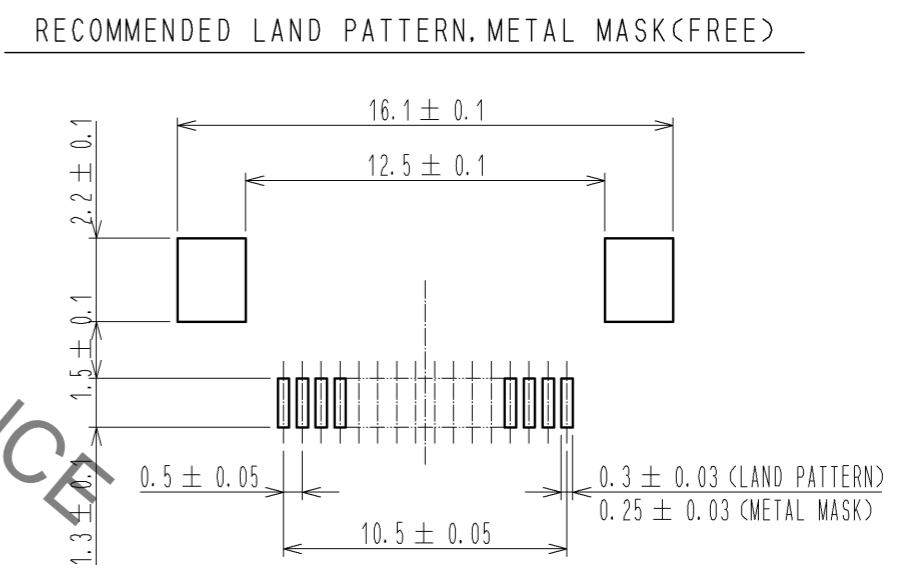
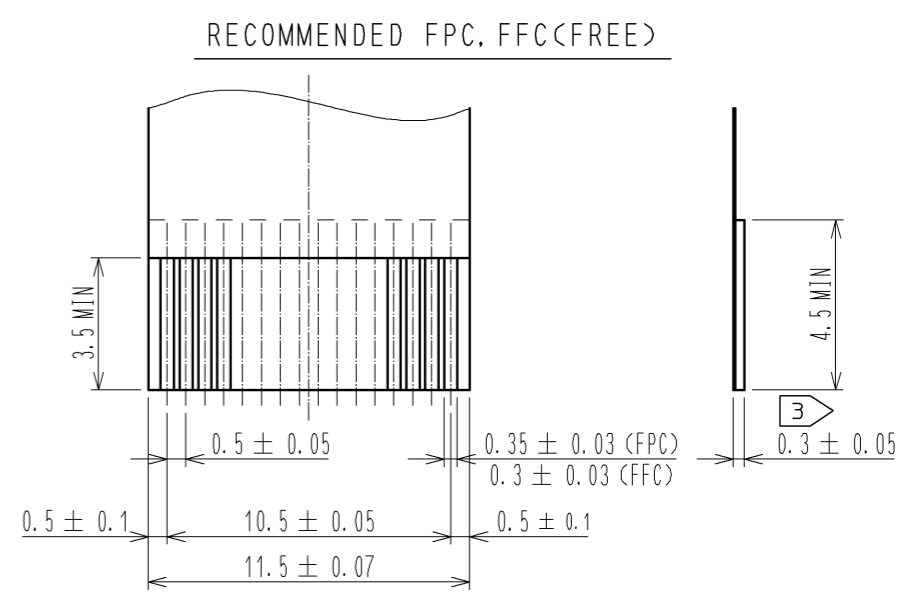


Jun.1.2020 Copyright 2020 HIROSE ELECTRIC CO., LTD. All Rights Reserved.
 In case of consideration for using Automotive equipment / device which demand high reliability, kindly contact our sales window correspondents.



NOTE
 ① REFERENCE IS a.
 ② LEAD CO-PLANARITY SHALL BE 0.1 MAX.
 ③ THICKNESS OF SUPPORTING TAPE SHALL BE 0.188(7.5mil) MIN.

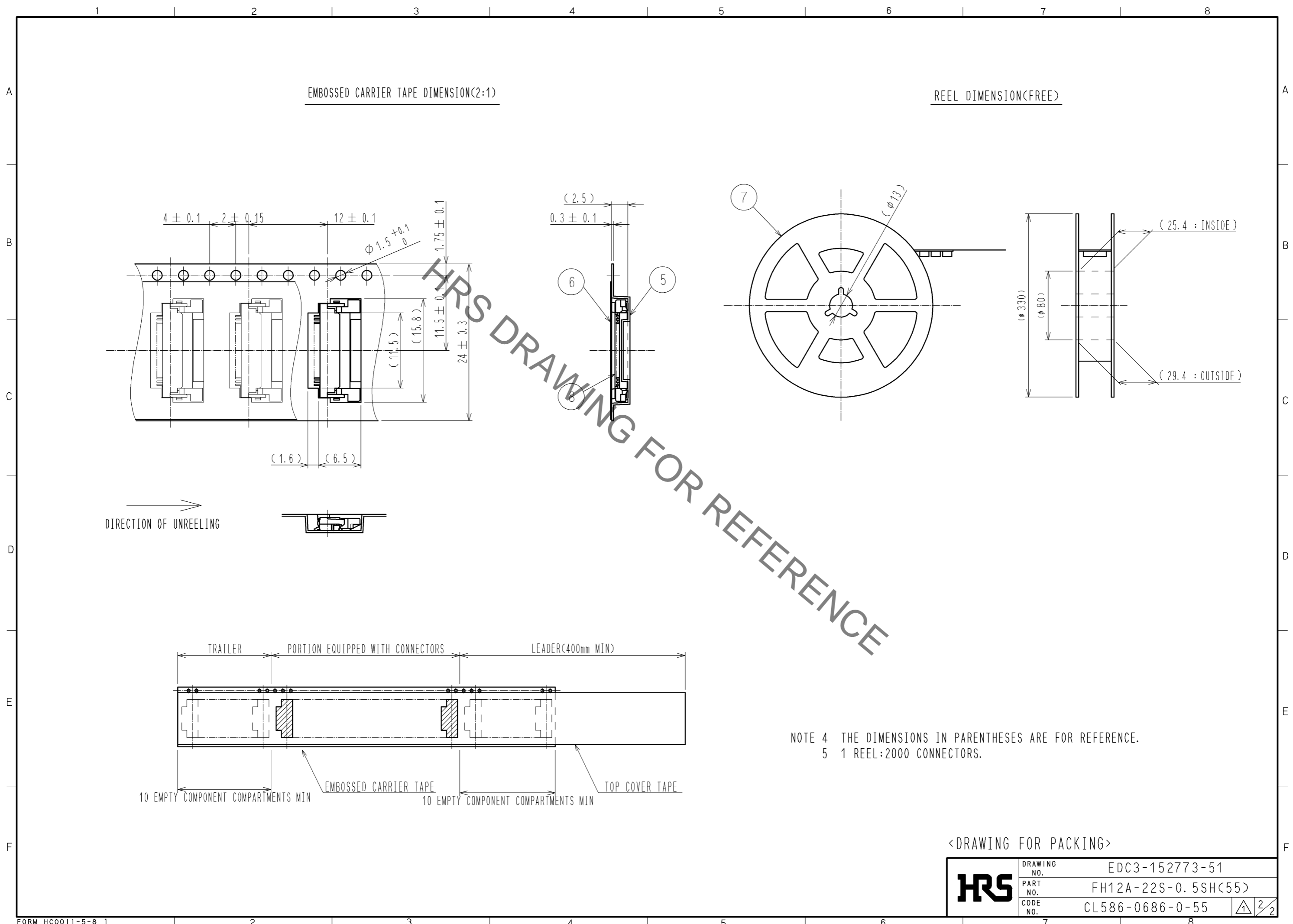


RECOMMENDED METAL MASK THICKNESS t=0.15

4	BRASS	TIN PLATING 1μmMIN OVER NICKEL 1μmMIN.	8	(CONNECTOR)	
3	PHOSPHOR BRONZE	GOLD PLATING 0.05μmMIN OVER NICKEL 1μmMIN.	7	POLYSTYRENE	
2	PPS	DEEP BROWN UL94V-0	6	POLYESTER	
1	POLYAMIDE	BEIGE UL94V-0	5	POLYSTYRENE	
NO.	MATERIAL	FINISH . REMARKS	NO.	MATERIAL	FINISH . REMARKS
UNITS	mm	SCALE	5 : 1	COUNT	1
APPROVED : RI. TAKAYASU			08.09.02		DESIGNED
CHECED : HS. SAKAMOTO			08.09.01		DESIGNED
DESIGNED : MK. YASUMI			08.08.26		CHECKED
DRAWN : MK. YASUMI			08.08.26		DATE
DIS-F-003410				DESIGNED	MK. YASUMI
				CHECKED	FN. TAMURA
				DATE	09.12.11
DRAWING NO.				EDC3-152773-51	
PART NO.				FH12A-22S-0.5SH(55)	
CODE NO.				CL586-0686-0-55	

HRS DRAWING FOR REFERENCE

Jun.1.2020 Copyright 2020 HIROSE ELECTRIC CO., LTD. All Rights Reserved.
 In case of consideration for using Automotive equipment / device which demand high reliability, kindly contact our sales window correspondents.



HRS DRAWING FOR REFERENCE

<DRAWING FOR PACKING>

HRS	DRAWING NO.	EDC3-152773-51
	PART NO.	FH12A-22S-0.5SH(55)
	CODE NO.	CL586-0686-0-55
		2/2