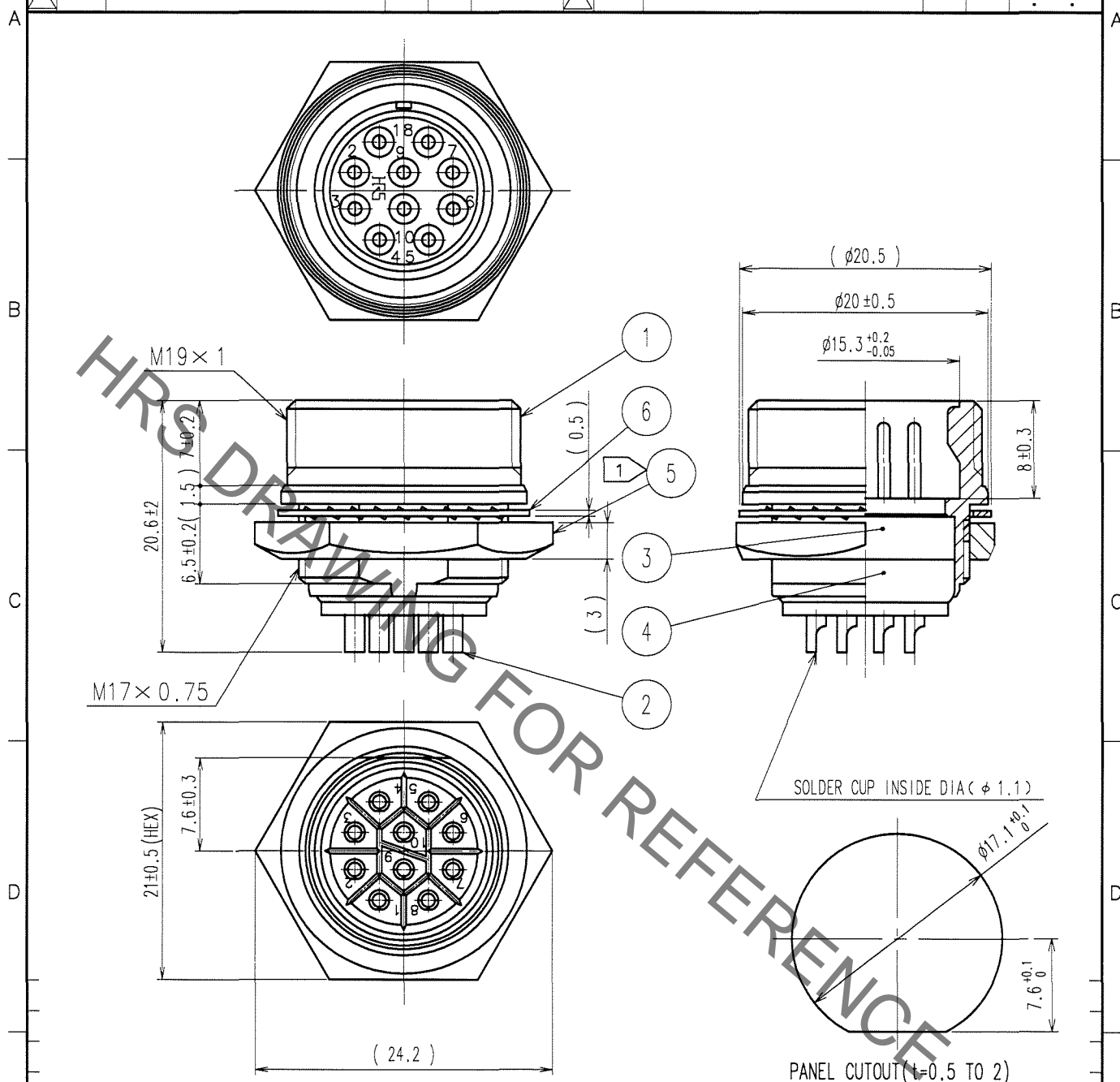


1			2			3			4		
COUNT	DESCRIPTION OF REVISIONS	BY	CHKD	DATE		COUNT	DESCRIPTION OF REVISIONS	BY	CHKD	DATE	
△						△					
△						△					
△						△					



NOTE 1 THE RECOMMENDED CLAMP TORQUE OF REF.NO. ⑤ TO BE 3-4 N·m.
LOCTITE 242, LOCTITE JAPAN IS RECOMMENDED TO PREVENT
REF.NO. ⑤ FROM LOOSENING.

3	DIALYL PHTHALATE	(BLACK)	UL 94V-0	6	PHOSPHOR BRONZE	NICKEL PLATING
2	COPPER ALLOY	SILVER PLATING	2 μm min.	5	BRASS	NICKEL PLATING
1	BRASS	NICKEL PLATING		4	DIALYL PHTHALATE	(BLACK) UL 94V-0
NO.	MATERIAL	FINISH, REMARKS		NO.	MATERIAL	FINISH, REMARKS

CODE NO. (OLD)	DRAWN	DESIGNED	CHECKED	APPROVED	RELEASED
CL	M. Sato	D. Matsume	E. Kuroi	M. Sato	
	06.06.08	06.06.08	06.06.08	06.06.08	

DRAWING NO.	PART NO.
EDC4-028100-71	RM15TRH-10PH(71)
CODE NO.	
CL109-0859-5-71	