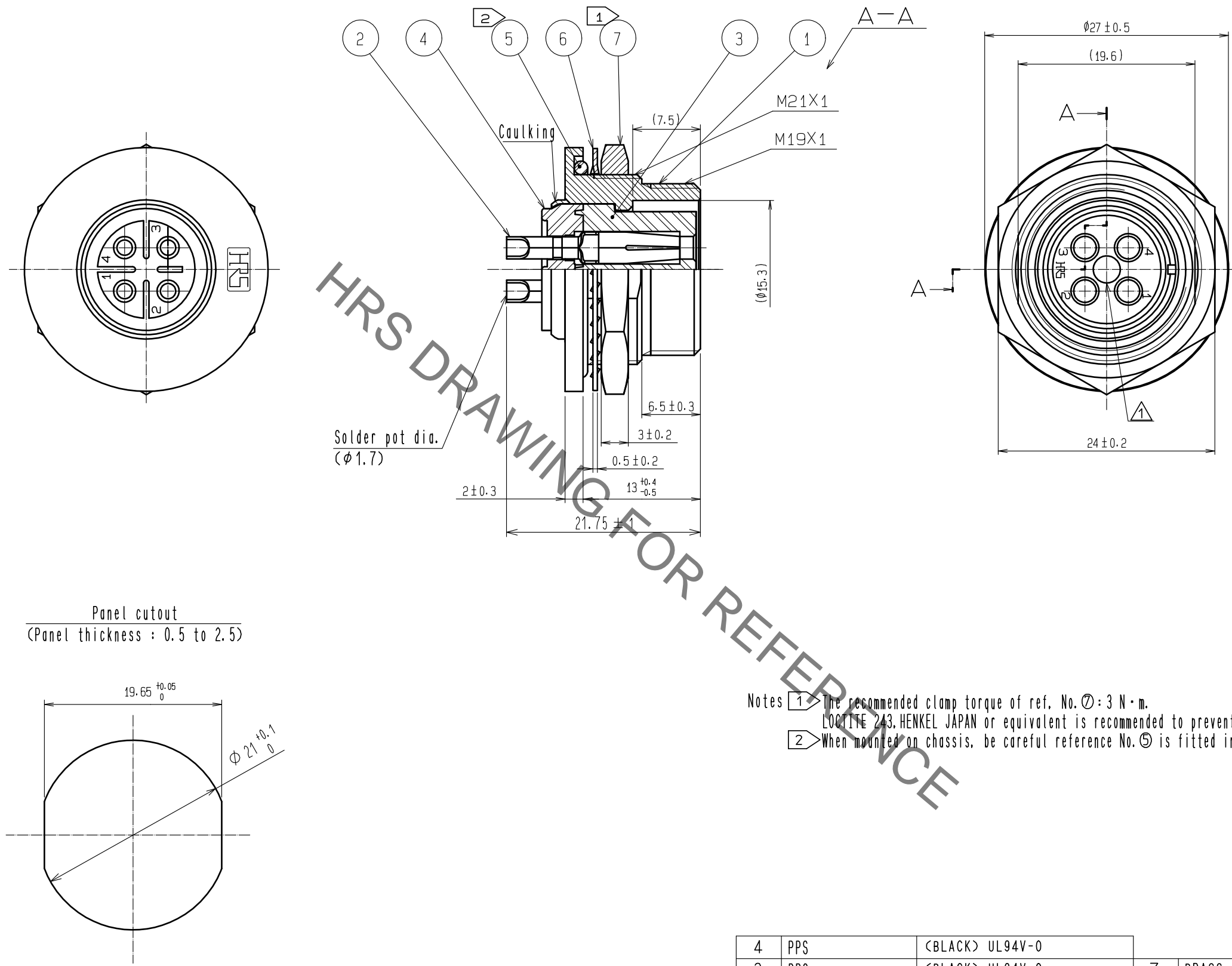
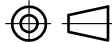




Jun.1.2020 Copyright 2020 HIROSE ELECTRIC CO., LTD. All Rights Reserved.
In case of consideration for using Automotive equipment / device which demand high reliability, kindly contact our sales window correspondents.



Notes 1 The recommended clamp torque of ref. No. ⑦: 3 N·m.
LOCTITE 243, HENKEL JAPAN or equivalent is recommended to prevent ref. No. ⑦ from loosening.
2 When mounted on chassis, be careful reference No. ⑤ is fitted into The indicates groove any biting.

4	PPS	(BLACK) UL94V-0											
3	PPS	(BLACK) UL94V-0		7	BRASS	NICKEL PLATING							
2	COPPER ALLOY	SILVER PLATING 2 μm min.		6	PHOSPHOR BRONZE	NICKEL PLATING							
1	ZINC ALLOY	CHROME PLATING		5	SILICONE RUBBER	(BLACK)							
NO.		MATERIAL		FINISH . REMARKS		NO.		MATERIAL		FINISH . REMARKS			
UNITS mm				SCALE 2 : 1				COUNT 1	DESCRIPTION OF REVISIONS DIS-C-00000841		DESIGNED KN. IKEHARA	CHECKED HY. KOBAYASHI	DATE 16. 03. 02
 HIROSE ELECTRIC CO., LTD.				APPROVED : HY. KOBAYASHI		15. 11. 06		DRAWING NO.		EDC-111089-81-00			
				CHECKED : HY. KOBAYASHI		15. 11. 06		PART NO.		RM15WTRZA-4S(81)			
				DESIGNED : KN. IKEHARA		15. 11. 06		CODE NO.		CL109-1659-1-81			
				DRAWN : KN. IKEHARA		15. 11. 06				