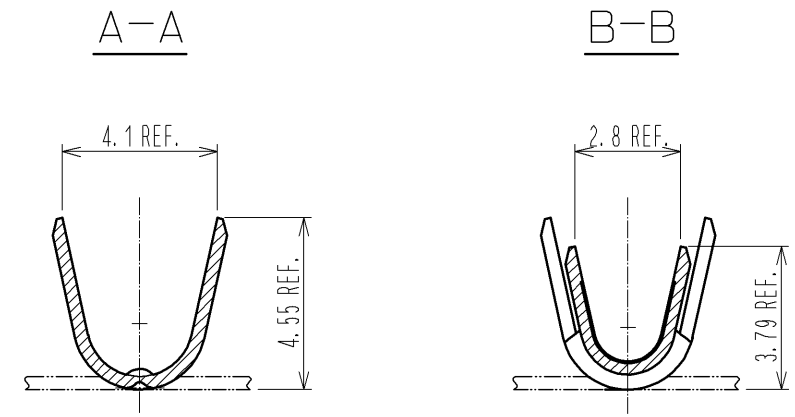
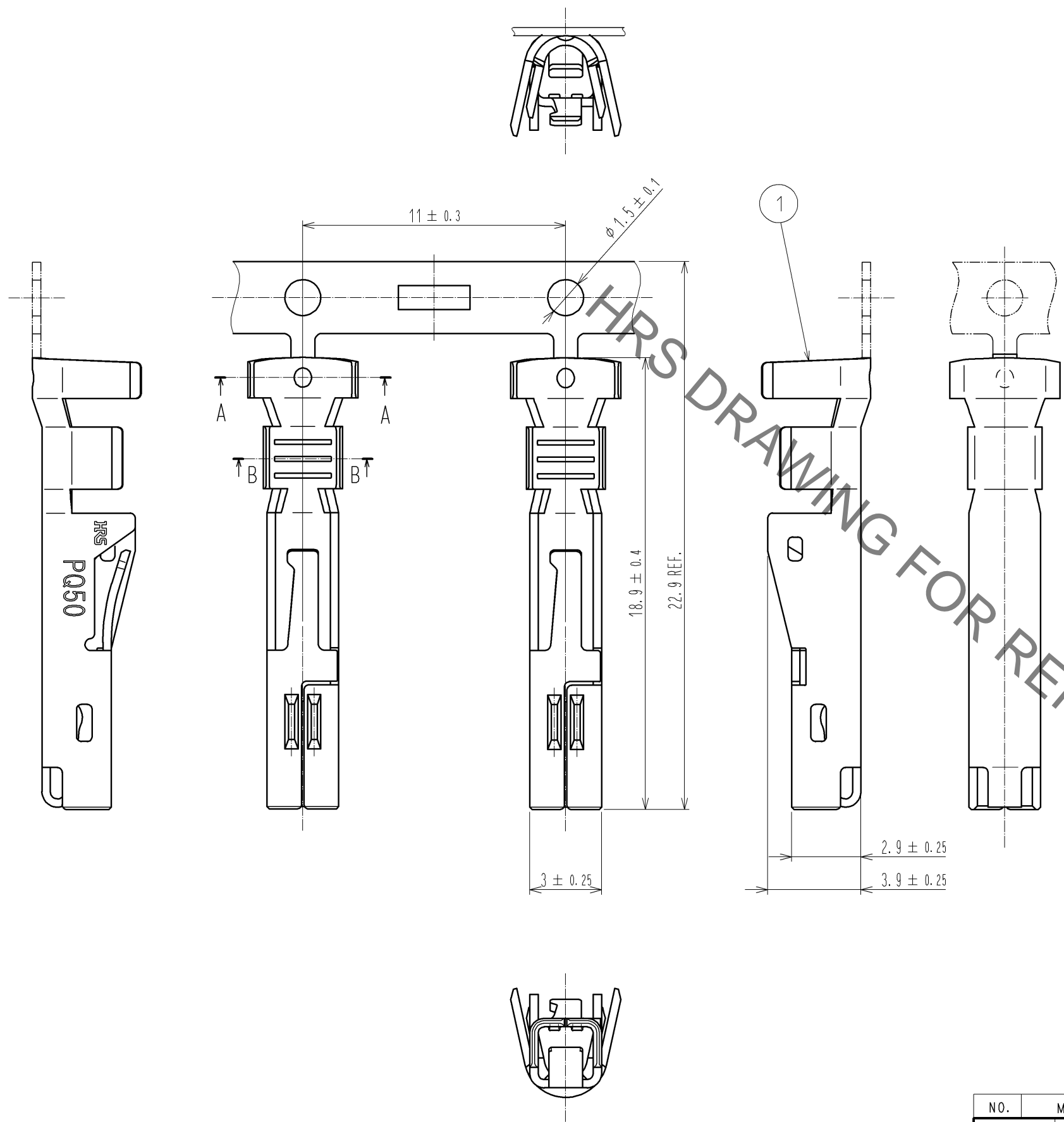
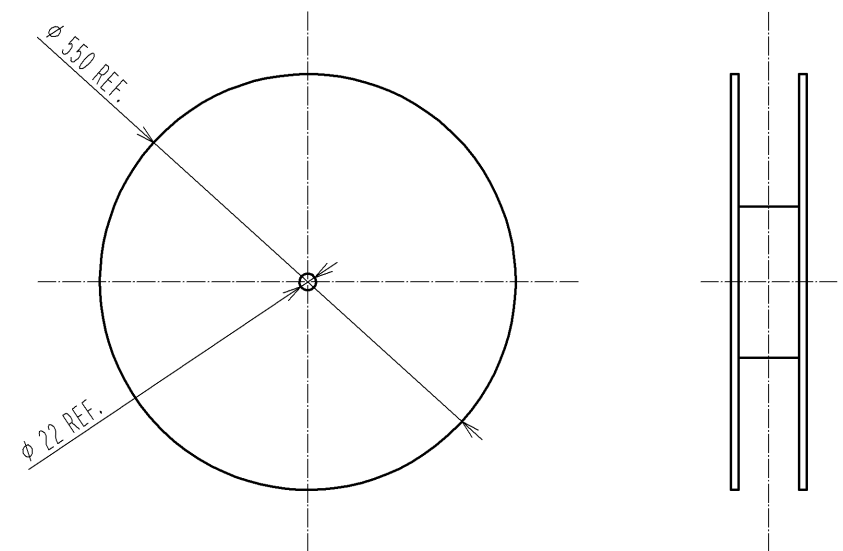


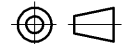



Jun.1.2020 Copyright 2020 HIROSE ELECTRIC CO., LTD. All Rights Reserved.  
In case of consideration for using Automotive equipment / device which demand high reliability, kindly contact our sales window correspondents.



PACKING REEL (FREE)



- △ NOTES
1. APPLICABLE WIRE IS AWG #14~#15.  
INSULATION DIAMETER φ 3.30mm MAX.  
WHEN CRIMPING AWG#14 (UL1015 φ 3.80mm),  
DUE TO THE DESIGN OF INSULATION BARREL,  
THE SHAPE OF CRIMP DOES NOT COVER INSULATION.  
IT DOES NOT AFFECT THE PRODUCT QUALITY.  
REFER TO ATAI-E3038 FOR CRIMP QUALITY STANDARDS.
  2. PER REEL : 3500 CONTACTS.
  3. APPLICABLE CRIMPING MACHINE AND CRIMPING CONDITIONS  
(CRIMP HEIGHT etc.) WILL BE SPECIFIED ACCORDING TO  
AWG # OR WIRE APPLIED.

|   |   |                         |   |            |  |   |   |                       |                    |
|---|---|-------------------------|---|------------|--|---|---|-----------------------|--------------------|
|   |   |                         |   | 1          | COPPER ALLOY                             | CONTACT AREA : GOLD PLATING 0.2μm MIN.<br>TERMINAL AREA : TIN PLATING 1μm MIN.<br>UNDER PLATING : NICKEL PLATING 0.5μm MIN. |   |                       |                    |
| NO.   | MATERIAL  | FINISH , REMARKS        |   |            | NO.                                      | MATERIAL  | FINISH , REMARKS  |                       |                    |
| UNITS<br>mm   |  | SCALE<br>5 : 1          |  | COUNT<br>1 | DESCRIPTION OF REVISIONS<br>DIS-E-004877 |   | DESIGNED<br>TY. MIURA   | CHECKED<br>AH. KODAMA | DATE<br>13. 12. 20 |
|  HIROSE<br>ELECTRIC<br>CO., LTD. |   | APPROVED : RI. TAKAYASU |   | 13. 06. 24 | DRAWING<br>NO.                           |   | EDC3-127172-00  |                       |                    |
|   |   | CHECKED : AH. KODAMA    |   | 13. 06. 24 | PART<br>NO.                              |   | PQ50-15SCFA   |                       |                    |
|   |   | DESIGNED : YH. MAMADA   |   | 13. 06. 21 | CODE<br>NO.                              |   | CL236-2017-0-00   |                       |                    |
|   |   | DRAWN : YH. MAMADA      |   | 13. 06. 21 |  |   |  1/1 |                       |                    |