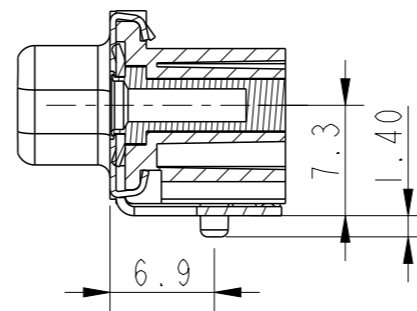
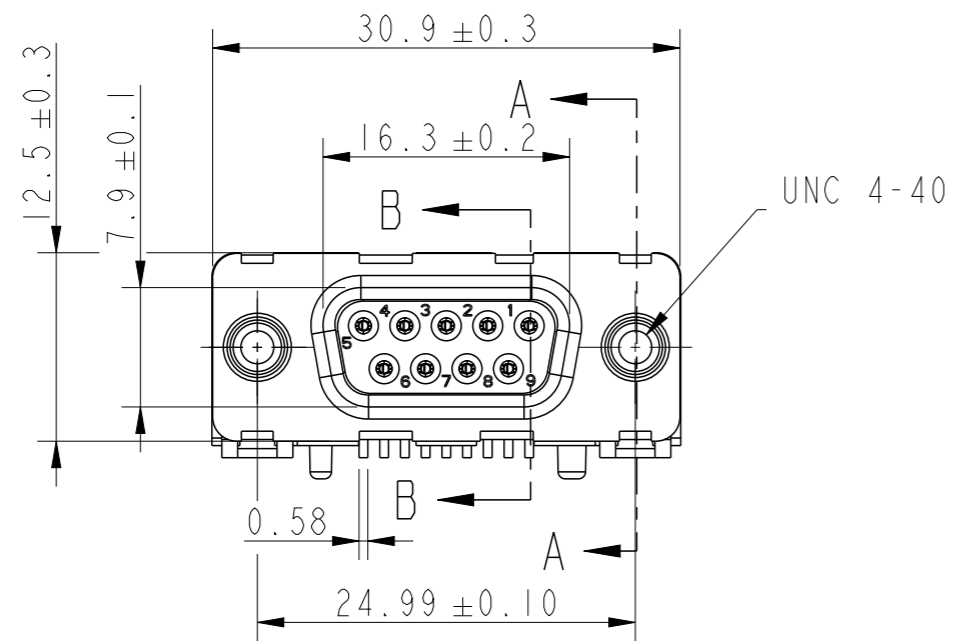
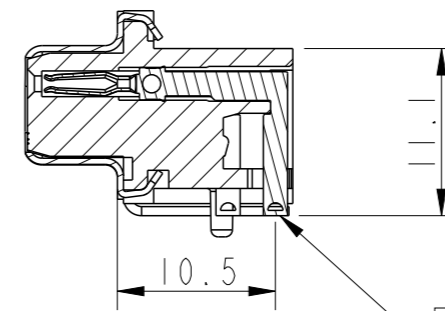


REFER SHEET 2 FOR PART NUMBER & TECHNICAL CHARACTERISTICS

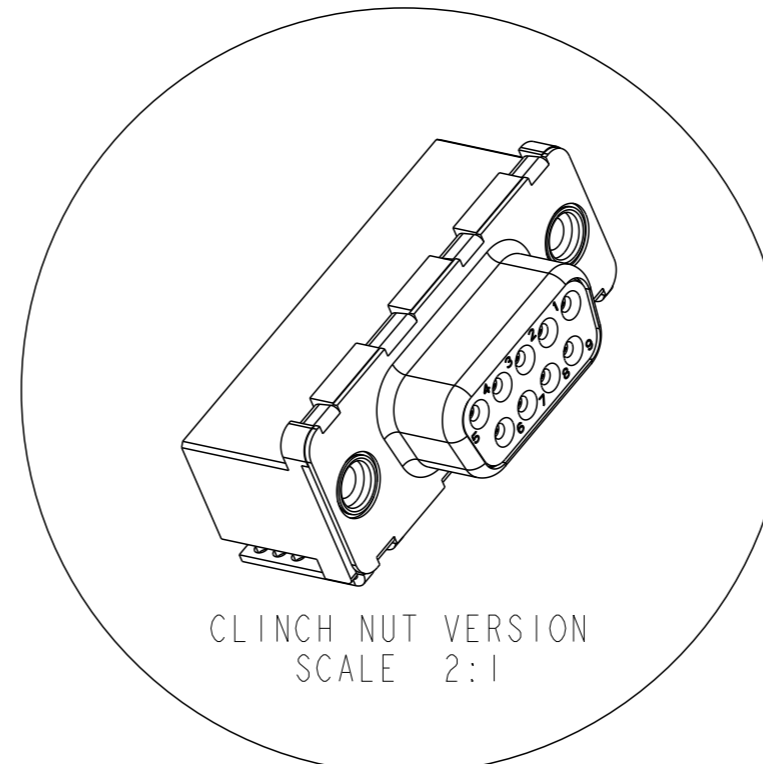
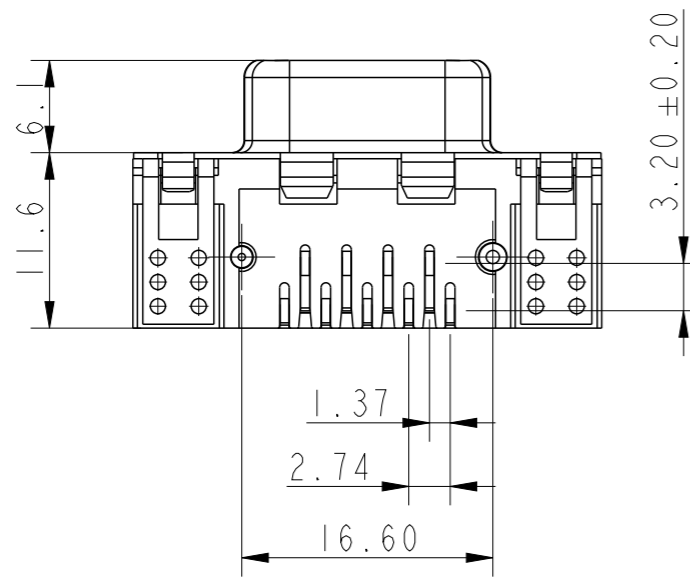


SECTION A-A

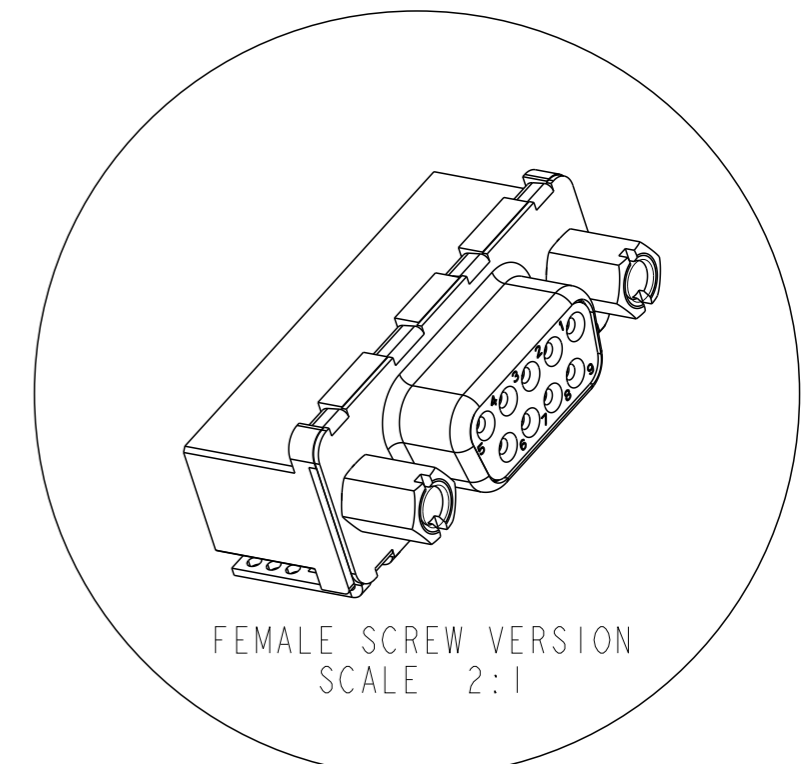


SECTION B-B

ALL CONTACTS & HOLD-ON

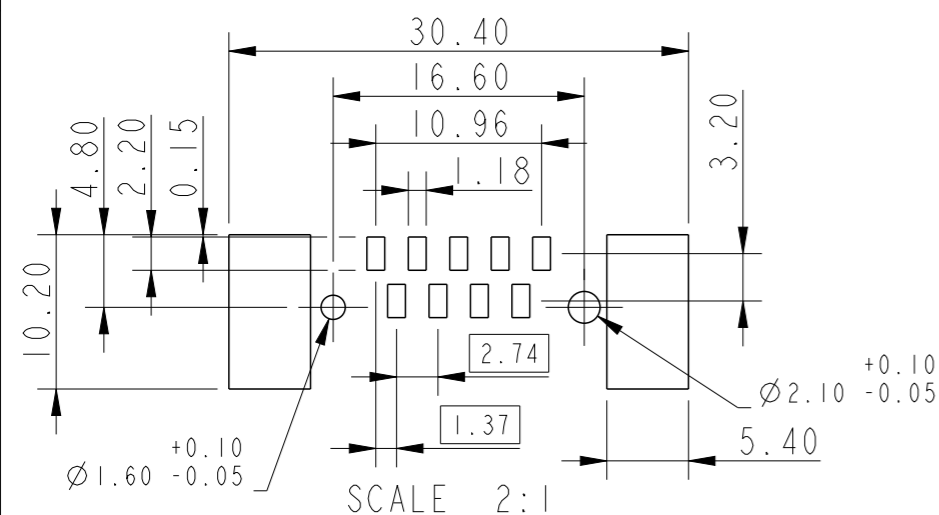


CLINCH NUT VERSION
SCALE 2:1



FEMALE SCREW VERSION
SCALE 2:1

RECOMMENDED PCB LAYOUT



SCALE 2:1

spec ref	dr	Gregar Mathew	2019/10/24	projection	MM	size	A3	scale	2:1
tolerance std	eng	Gregar Mathew	2020/05/22			ecn no	ELX-I-37118-1	rel level	Released
ISO 406 ISO 1101	chr	-	-						
surface	linear	0.X	±0.3	Amphenol FCI		D-SUB SMT CONNECTOR 09 POSITION FEMALE		product family D-SUB	dwg no 10153830
		0.XX	±0.1						
ISO 1302	angular	0°	±1°	cat. no.	-	Product - Customer Drw		rev	C

PART NUMBER	DESCRIPTION	PERFORMANCE CLASS	MOUNTING OPTION	PACKAGING OPTION
D09S70S6PX00LF	D-SUB 09 SMT FEMALE CONNECTOR	6 - 500 MATING/UNMATING	CLINCH NUT UNC 4.40	TRAY PACKING
D09S70S6UX12LF	D-SUB 09 SMT FEMALE CONNECTOR	6 - 500 MATING/UNMATING	CLINCH NUT UNC 4.40	TAPE & REEL PACKING
D09S70S6UL12LF	D-SUB 09 SMT FEMALE CONNECTOR	6 - 500 MATING/UNMATING	CLINCH NUT M3	TAPE & REEL PACKING
D09S70S6UV12LF	D-SUB 09 SMT FEMALE CONNECTOR	6 - 500 MATING/UNMATING	FEMALE SCREW UNC 4.40	TAPE & REEL PACKING

NOTES:

PHYSICAL CHARACTERISTICS

- INSULATOR MATERIAL : LCP 30% GF
- CONTACT MATERIAL : COPPER ALLOY
- GROUNDING MATERIAL : BRASS

ELECTRICAL CHARACTERISTICS

- MAXIMUM RATING CURRENT : 5A AT 70°C
- NOMINAL CURRENT : 5A (STANDARD CONDITIONS)
- CONTACT RESISTANCE : <25mΩ
- VOLTAGE PROOF : >1000 V.r.m.s.
- RATED VOLTAGE : 300 V.r.m.s.
- Insulation resistance : >5000MΩ
- Creepage and clearance distance: >1mm
- Average wiping length : 2mm

MECHANICAL CHARACTERISTICS

- RETENTION AGAINST TORQUE : 0.7 N.m minimum

NOTE RoHS INFORMATIONS

- The "LF" products meet European union Directives and other country regulations as described in GS-47-0004
- The housing will withstand exposure to 260 C peak temperature for 3.5 seconds in a reflow solder application with a 1.6 mm minimum thick circuit board.

spec ref		dr	Gregar Mathew	2019/10/24	projection 	MM ←————→	size	A3	scale	2:1
tolerance std		eng	Gregar Mathew	2020/05/22			ecn no	ELX-I-37118-1		
ISO 406 ISO 1101		TOLERANCES UNLESS OTHERWISE SPECIFIED		chr			-	rel level	Released	
surface	linear	0.X	±	Amphenol FCi	D-SUB SMT CONNECTOR	dwg no	10153830	rev	C	
		0.XX	±							
ISO 1302	angular	0°	±1°							cat. no.