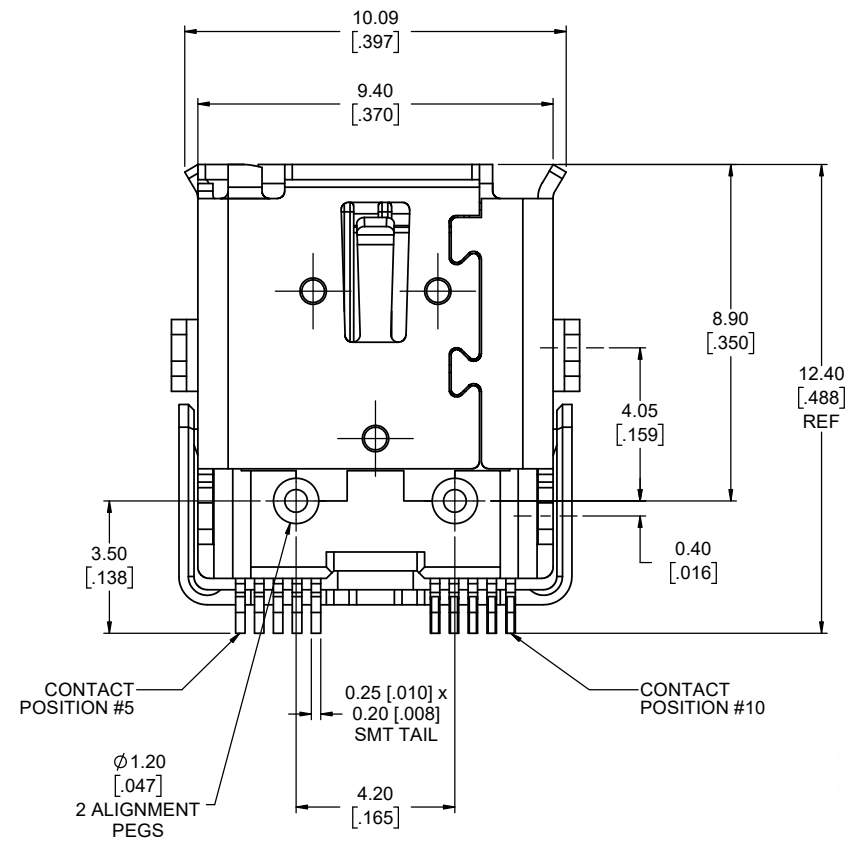
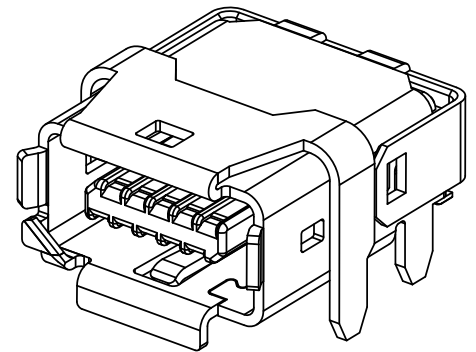


REVISIONS			
REV	DESCRIPTION, ECN, EAR NO.	DATE	APP'D
A	PROPOSAL DRAWING (EAR 14811)	MAR13/20	K.L.
B	PRODUCT DRAWING (EAR 14811)	JUN12/20	M.P.



**ORDERING CODE: ND9 - BS3X - 00**

SERIES, IX INDUSTRIAL  
 TYPE B KEY  
 SOCKET / RECEPTACLE  
 RIGHT ANGLE

STANDARD  
 PLATING FOR MATING AREA  
 2 = 0.2µm (8µ") GOLD  
 7 = 0.76µm (30µ") PALLADIUM NICKEL WITH GOLD FLASH

**NOTES:**

- MATERIAL: RoHS COMPLIANT PER EU DIRECTIVE 2011/65/EU AND AMENDMENTS.
  - SHIELD: STAINLESS STEEL, MATTE TIN OVER NICKEL PLATED.
  - INSERTS: HIGH TEMPERATURE RESISTANT ENGINEERING THERMOPLASTIC, GLASS REINFORCED, UL94V-0, GRAY.
  - CONTACTS: COPPER ALLOY PLATED WITH GOLD OR PALLADIUM-NICKEL (SEE ORDERING CODE) OVER 1.27µm (50µ") MINIMUM NICKEL ON THE MATING AREA AND GOLD FLASH ON THE SMT TAILS.
- CONNECTORS ARE PROVIDED IN TAPE & REEL PACKAGING FOR PICK & PLACE PROCESSING AND ARE SUITABLE FOR IR REFLOW SOLDERING OF PIN IN PASTE SHIELD TAILS AND SURFACE MOUNT CONTACT TAILS.
- DESIGNED TO CONFORM TO REQUIREMENTS OF IEC 61076 PART 3-124 SPECIFICATION. THE TYPE B KEY FEATURE SHOWN IS INTENDED FOR NON-ETHERNET APPLICATIONS. IN SPECIAL SITUATIONS, THE TYPE B KEYED CONNECTORS, USED IN CONJUNCTION WITH TYPE A KEYED CONNECTORS, MAY BE USED AS A METHOD TO SEGREGATE OR CONTROL MATING PLUG INSTALLATIONS IN A COMPLEX ETHERNET APPLICATION.
- CURRENT RATING: 1.5 AMPERES, VOLTAGE RATING: 50V AC rms OR 60V DC
- OPERATING TEMPERATURE -55° TO +85°C.
- DIELECTRIC WITHSTANDING VOLTAGE: 500V DC
- CONTACT RESISTANCE: 30 MILLIOHMS MAXIMUM.
- INSULATION RESISTANCE: 500 MEGOHMS MINIMUM.
- MATING & UNMATING FORCE: 25N (5.6 lbf) MAXIMUM.



UNLESS SPECIFIED OTHERWISE	DRAWN	J.BRAR	MAR06/20
PRIMARY UNITS MILLIMETERS	CHECKED	K.LAMBIE	MAR13/20
SECONDARY UNITS INCHES	M.E. APP'D		
REFERENCE IN PARENTHESES	Q.A. APP'D		
GENERAL TOLERANCES	DWG APPR.		
1 DECIMAL PLACE	ENG. REL. NO.	EAR 14811	
2 DECIMAL PLACES	REF.		
3 DECIMAL PLACES	THIRD ANGLE PROJECTION		
ANGULAR DEGREES	DO NOT SCALE DRAWING		

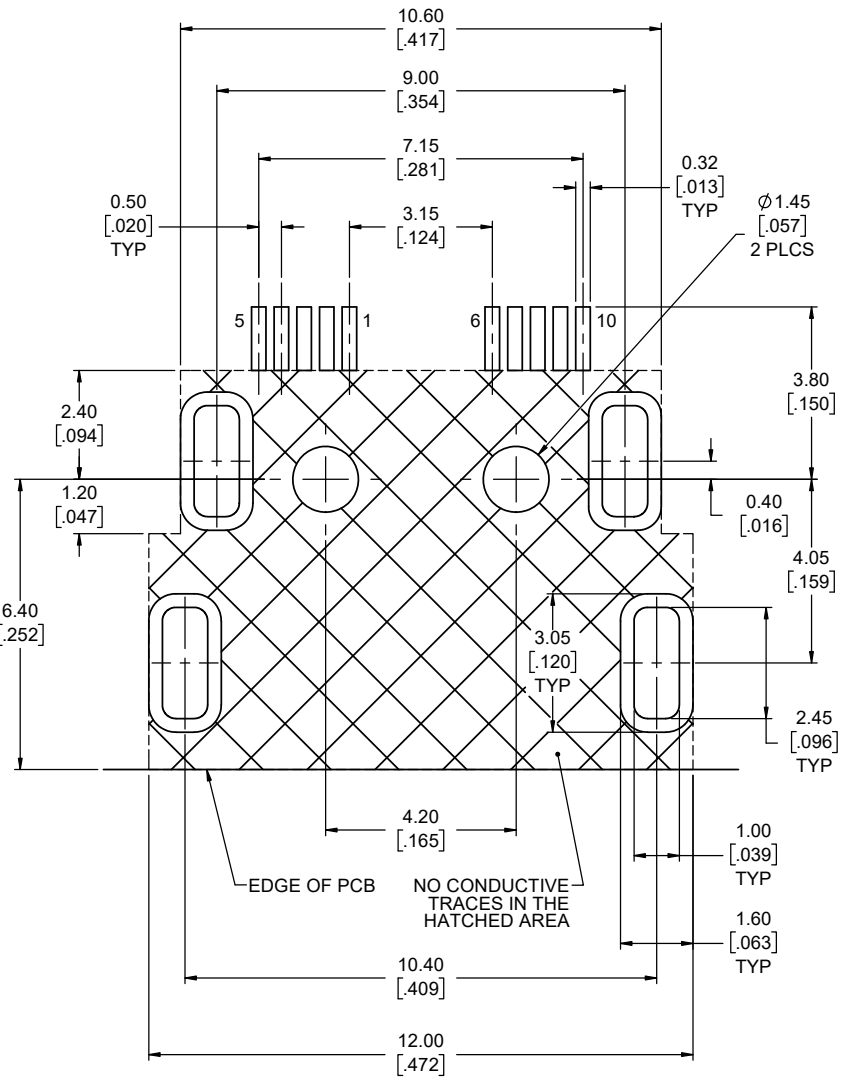
**Amphenol Canada Corp.**  
 Commercial Products

**IX INDUSTRIAL CONNECTOR, 10 POSITION TYPE B RIGHT ANGLE HORIZONTAL STYLE, SMT TERMINATION, CAT 6A HIGH SPEED PERFORMANCE, RoHS COMPLIANT**

**P-ND9-BS3X-00**

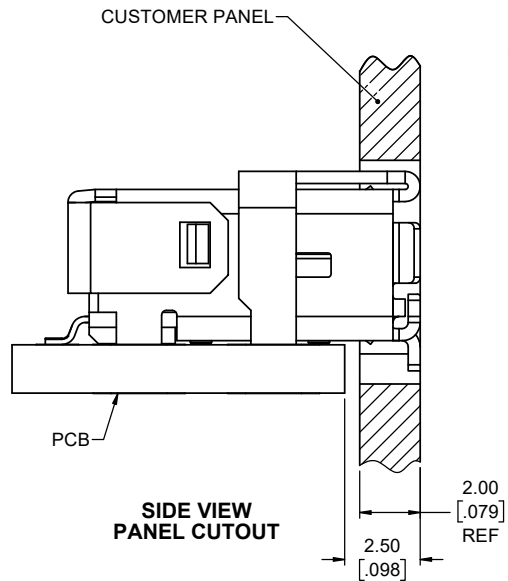
CODE ID NO. 03554 | DWG SIZE: C | SCALE: 10:1 | SHEET 1 OF 2

REVISIONS			
REV	DESCRIPTION, ECN, EAR NO.	DATE	APP'D
A	PROPOSAL DRAWING (EAR 14811)	MAR13/20	K.L.
B	PRODUCT DRAWING (EAR 14811)	JUN12/20	M.P.

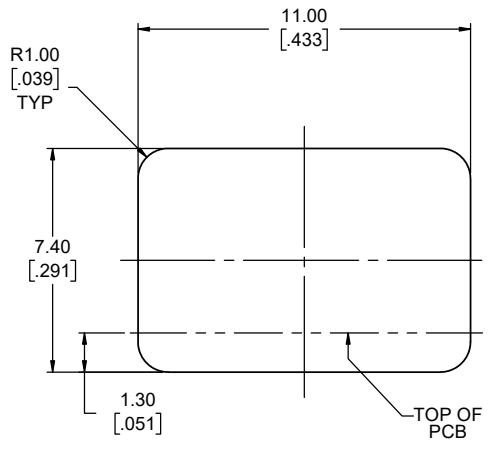


**RECOMMENDED PCB LAYOUT**  
COMPONENT SIDE OF BOARD  
SCALE 15:1

LOCATE HOLES  
 $\varnothing 0.13 [0.005]$  DIA  
 POSITION DIMENSIONS  
 ARE BASIC



**SIDE VIEW  
PANEL CUTOUT**



**RECOMMENDED PANEL CUTOUT**  
OUTSIDE VIEW OF PANEL

CONNECTOR PIN ASSIGNMENT (IF USED FOR ETHERNET)		
POSITION NUMBER	PIN ASSIGNMENT 10 OR 100 Mbit/S ETHERNET	PIN ASSIGNMENT 1, 2.5, 5 OR 10 Gbit/S ETHERNET
1	TX +	BI_DA +
2	TX -	BI_DA -
3	NOT USED	GND
4	NOT USED	BI_DC +
5	NOT USED	BI_DC -
6	RX +	BI_DB +
7	RX -	BI_DB -
8	NOT USED	GND
9	NOT USED	BI_DD +
10	NOT USED	BI_DD -



UNLESS SPECIFIED OTHERWISE	DRAWN	J.BRAR	MAR06/20
PRIMARY UNITS MILLIMETERS	CHECKED	K.LAMBIE	MAR13/20
SECONDARY INCHES	M.E. APP'D		
REFERENCE IN PARENTHESES	Q.A. APP'D		
GENERAL TOLERANCES	DWG APPR.		
1 DECIMAL PLACE	ENG. REL. NO.	EAR 14811	
2 DECIMAL PLACES	REF.		
3 DECIMAL PLACES	THIRD ANGLE PROJECTION		
ANGULAR DEGREES	DO NOT SCALE DRAWING		

**Amphenol Canada Corp.**  
Commercial Products

**IX INDUSTRIAL CONNECTOR, 10 POSITION  
TYPE B RIGHT ANGLE HORIZONTAL STYLE,  
SMT TERMINATION, CAT 6A HIGH SPEED  
PERFORMANCE, RoHS COMPLIANT**

DWG. NO. **P-ND9-BS3X-00** REV **B**

CODE ID NO. 03554 DWG SIZE: C SCALE: 8:1 SHEET 2 OF 2