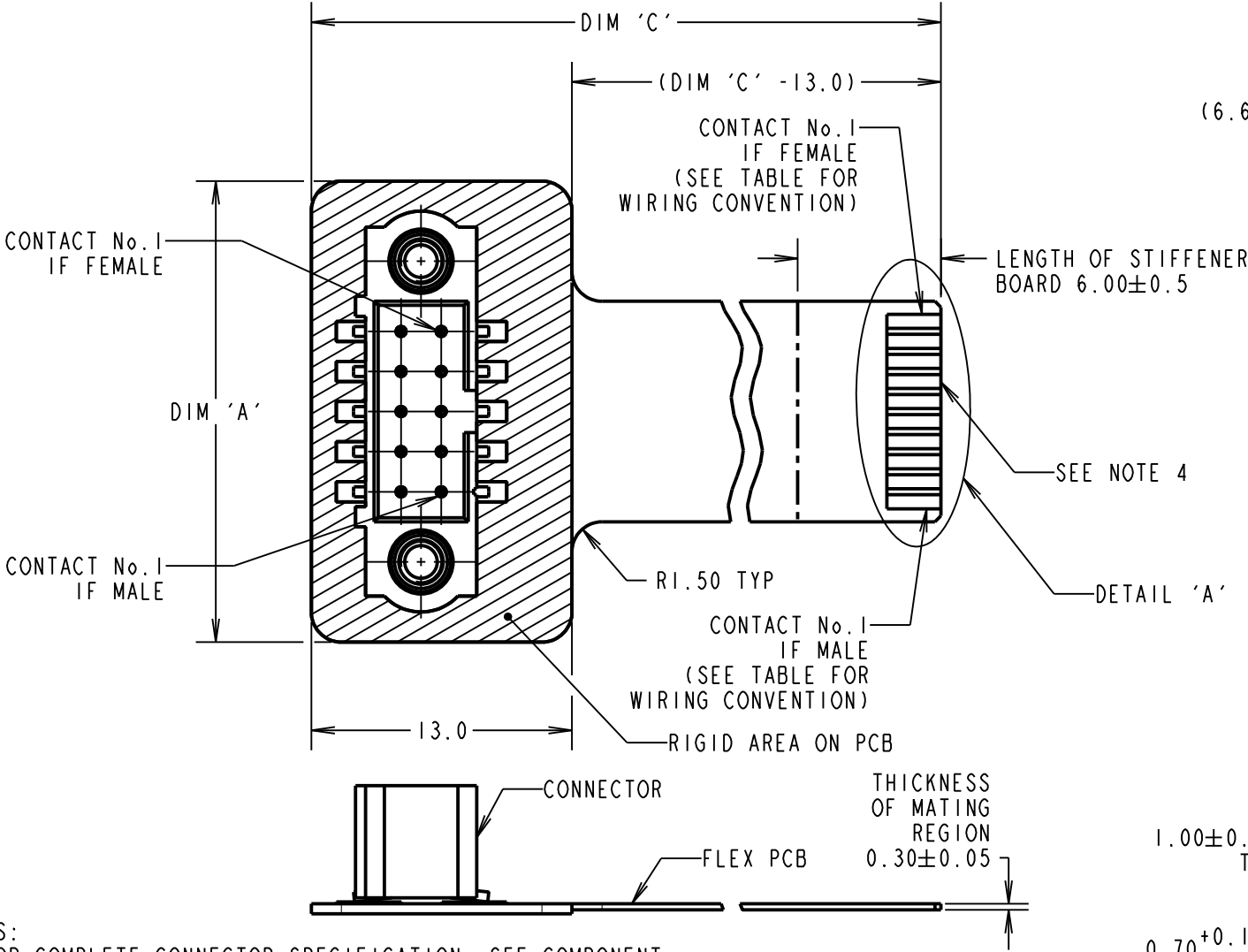


Customer Information Sheet

DRAWING No.: M80-FIXXXX-XXX-L IF IN DOUBT - ASK © NOT TO SCALE THIRD ANGLE PROJECTION ALL DIMENSIONS IN mm



ORDER CODE:

M80-FIXXXX-XXX-L

CONNECTOR 1 PART No.:
402 = M80-402XX42
422 = M80-422XX42
502 = M80-502XX42
512 = M80-512XX42

DIM 'C' (PCB LENGTH):
999 = 999mm MAX.

TOTAL No. OF CONTACTS:
06, 10, 12, 16, 20, 26, 34, 50.

TABLE 2	
ZIF PIN OUT No.	CONNECTOR PIN OUT No.
1	1
2	6
3	2
4	7
5	3
6	8
7	4
8	9
9	5
10	10

BASED ON M80-FI50210-100-L SHOWN. CONVENTION CONTINUES AS FOLLOWS:

ALL FIRST ROW CONTACTS:
CONTACT X TO CONTACT ((TOTAL/2)+X)
(WHERE X IS CONTACT POSITION)

ALL SECOND ROW CONTACTS:
CONTACT Y TO CONTACT (Y-(TOTAL/2))
(WHERE Y IS CONTACT POSITION)

'FIRST ROW' POSITIONS ARE ON CONTACT No. 1 ROW

'SECOND ROW' POSITIONS ARE ON ROW OPPOSITE CONTACT No. 1

- NOTES:
- FOR COMPLETE CONNECTOR SPECIFICATION, SEE COMPONENT SPECIFICATION C005XX (LATEST ISSUE).
 - CONNECTOR SHOWN FOR REFERENCE ONLY. SEE TABLE AND ORDER CODE FOR POSSIBLE CONFIGURATIONS.
 - PCB ASSEMBLIES PACKED INDIVIDUALLY IN ANTI-STATIC BAGS.
 - 1.00mm PITCH CONNECTION DESIGNED FOR USE WITH ZIF/FPC/FFC.
 - JACKSCREWS MUST BE FASTENED TO $21\pm 2\text{cNm}$ (AS PER C005XX).
- FLEX PCB SPECIFICATION:

- BOARD CONSTRUCTION:
- SINGLE LAYER FLEXIBLE PCB
 - 50µm BASE POLYIMIDE
 - 35µm (1oz) COPPER CLAD TO IPC-4204/1
 - 50µm BONDED COVERLAY TO IPC-4203/1
 - 0.8mm HTG FR4 TO IPC-4101/126 LOCALLY RIGIDISED IN CONNECTOR AREAS
- SURFACE FINISH:
- ENIG TO IPC-4552 ON EXPOSED COPPER
- IPC CLASSIFICATION:
- BARE CIRCUIT - IPC-A-600/IPC-6013 CLASS 3
 - ASSEMBLY - IPC-A-610/J-STD-001 CLASS 3
- MECHANICAL PROPERTIES:
- NOMINAL FLEX THICKNESS = 0.185mm
 - MINIMUM STATIC BEND RADIUS (IPC-2223) = 1.85mm
 - SUITABLE FOR DYNAMIC OPERATION ON BEND RADII ABOVE 3.70mm
- ELECTRICAL PROPERTIES:
- MAX. CURRENT PER TRACK = 1.0A
 - INSULATION RESISTANCE = $1G\Omega$ MIN
 - VOLTAGE PROOF (1013mbar, SEA LEVEL) = 1200V DC OR AC PEAK

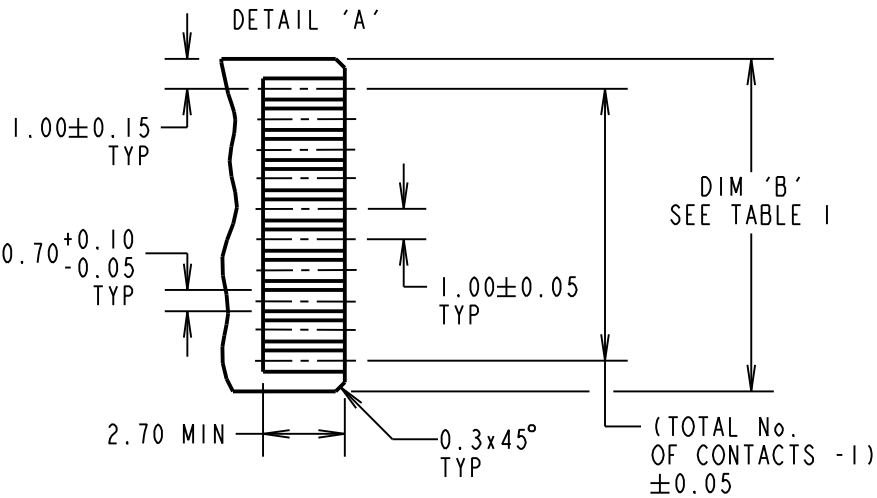
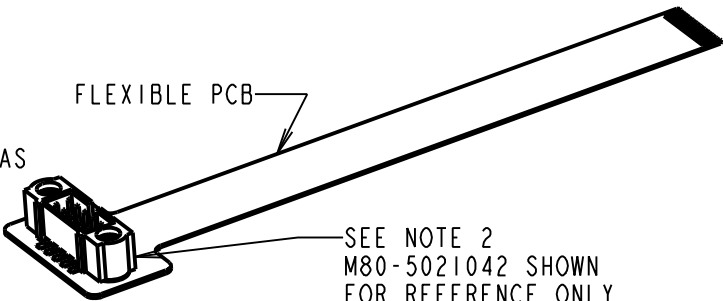


TABLE 1	
DIMENSION	CALCULATION
DIM 'A'	TOTAL No. OF CONTACTS + 13
DIM 'B'	(TOTAL No. OF CONTACTS + 1) + 0.10/-0.05
DIM 'C'	OVERALL PCB LENGTH (SEE ORDER CODE)

EXAMPLE:
100mm FLEX PCB WITH 10 CONTACT CONNECTOR (M80-5021042)

PART NUMBER = M80-FI50210-100-L
DIM 'A' = 23mm DIM 'B' = 11mm DIM 'C' = 100mm

RTP	4	06.07.20	30088
NAME	ISS.	DATE	CN/CO
APPROVED: R.PORTLOCK			
CHECKED: M.RUDKIN			
DRAWN: R.PORTLOCK			
CUSTOMER REF.:			
ASSEMBLY DRG:			

HARWIN

www.harwin.com
technical@harwin.com

THIS DRAWING AND ANY INFORMATION OR DESCRIPTIVE MATTER SET OUT HEREON ARE CONFIDENTIAL AND COPYRIGHT PROPERTY OF THE HARWIN GROUP AND MUST NOT BE DISCLOSED, LOANED, COPIED OR USED FOR MANUFACTURING, TENDERING OR FOR ANY OTHER PURPOSE WITHOUT THEIR WRITTEN PERMISSION.

TOLERANCES
X. = ±1mm
X.X = ±0.50mm
X.XX = ±0.20mm
X.XXX = ±0.01mm
ANGLES = ±5°
UNLESS STATED

MATERIAL:
SEE ABOVE
FINISH: SEE ABOVE
S/AREA: mm²

TITLE:
DATAMATE FLEX PCB ASSEMBLY
DRAWING NUMBER:
M80-FIXXXX-XXX-L
SHT 2 OF 2