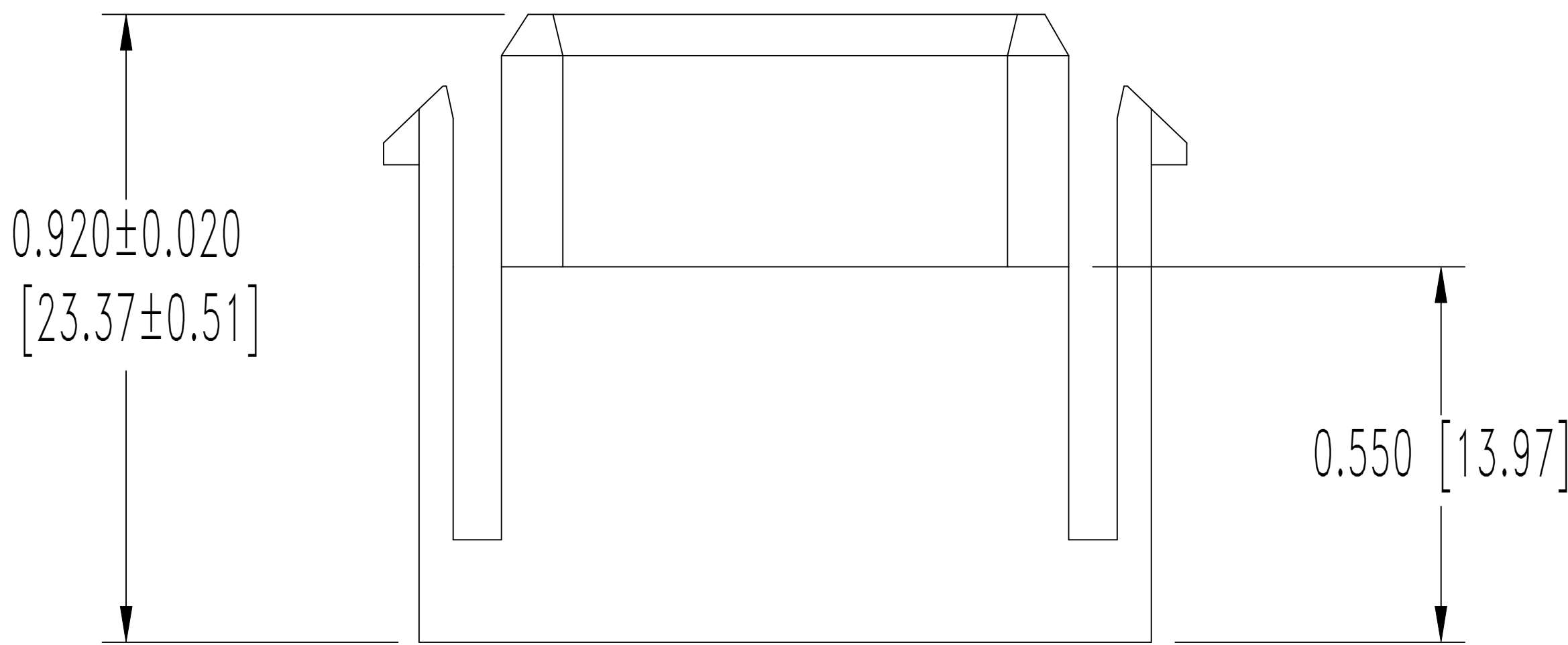
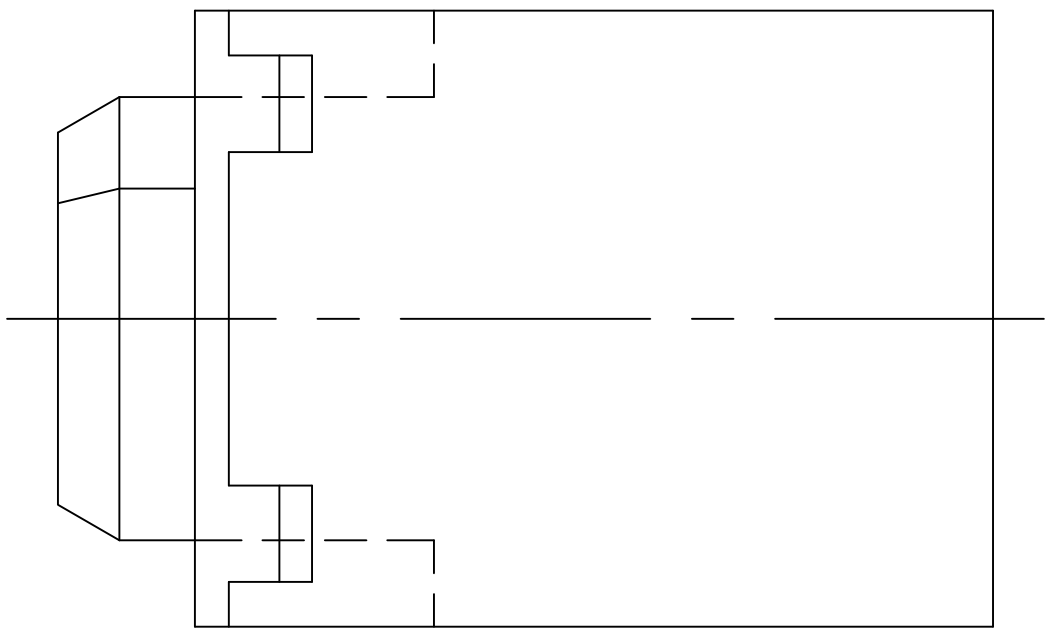
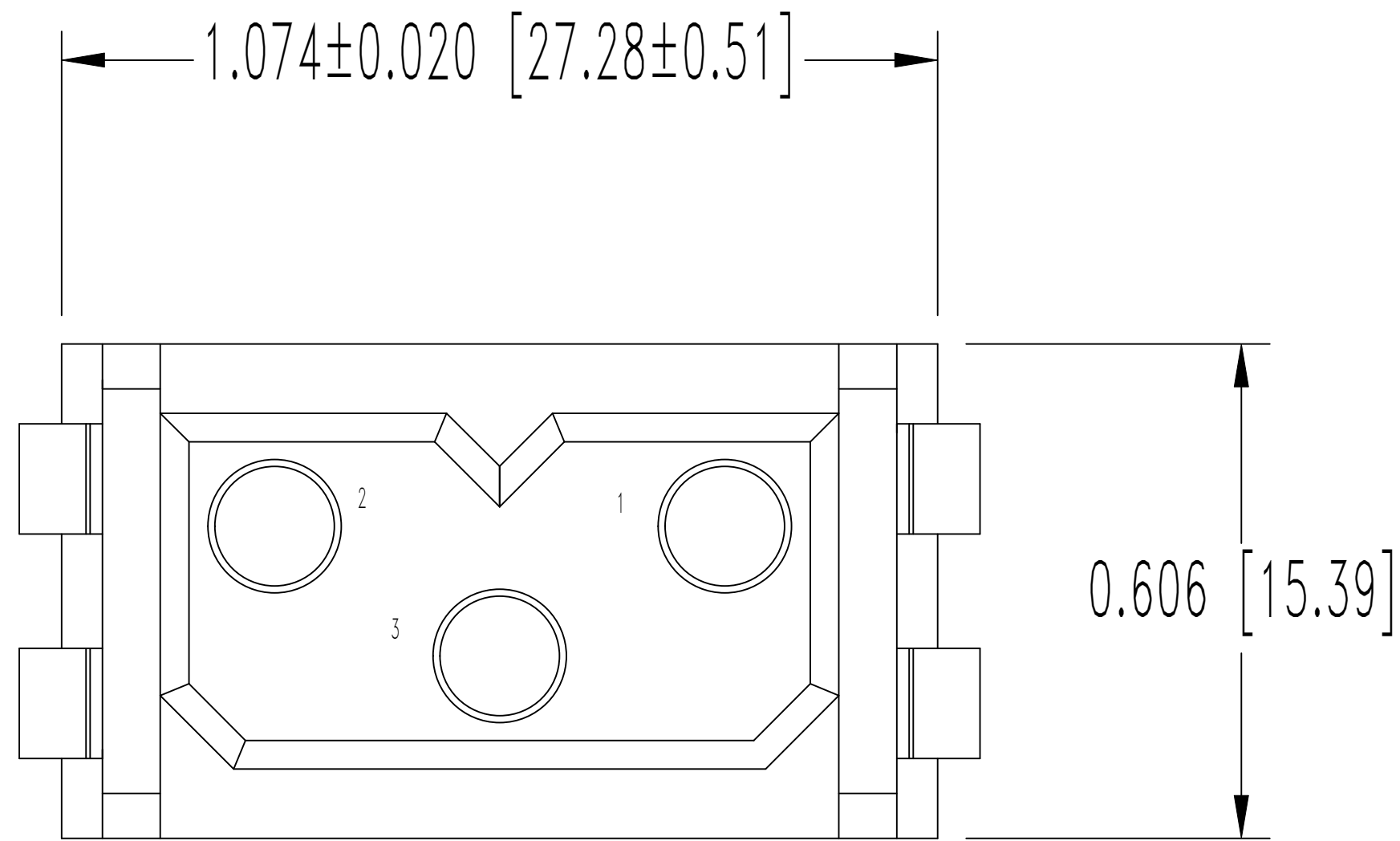


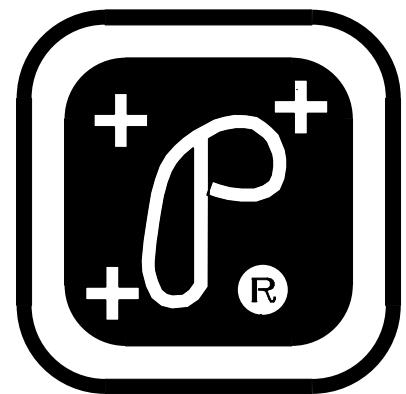
THIS DRAWING CONTAINS INFORMATION PROPRIETARY TO POSITRONIC AND ITS SUBSIDIARIES. POSITRONIC BELIEVES THE DATA ON THIS DRAWING TO BE RELIABLE. SINCE THE TECHNICAL INFORMATION IS GIVEN FREE OF CHARGE, THE USER EMPLOYS SUCH INFORMATION AT HIS OWN DISCRETION AND RISK. POSITRONIC ASSUMES NO RESPONSIBILITY FOR RESULTS OBTAINED OR DAMAGES INCURRED FROM USE OF SUCH INFORMATION IN WHOLE OR IN PART.

DATE	REV	REVISION RECORD	APP	DR	CK
5-30-06	NC	ECO 26017	RCW	YK	RCW
6-13-17	A	ECO 55488	BF	AB	BF



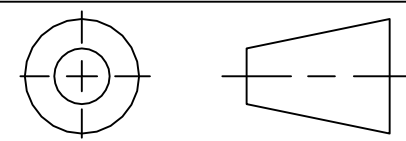
NOTES:

- 1. MATERIALS AND FINISHES:
INSULATOR: GLASS FILLED POLYESTER, UL 94V-0, COLOR : BLUE.
- 2. DETAILED PRODUCT, MECHANICAL AND ELECTRICAL INFORMATION IS AVAILABLE IN THE LATEST POWER CONNECTION SYSTEMS PRODUCT PUBLICATION AT CONNECTPOSITRONIC.COM.
- 3. CONNECTORS ARE COMPLIANT TO THE CURRENT ROHS DIRECTIVE.
- 4. DIMENSIONS ARE IN INCHES [MILLIMETERS].



POSITRONIC INDUSTRIES INC.
www.connectpositronic.com

FSCM 28198



DECIMAL TOL.
± 0.015 [0.38]

ANGULAR TOL.
± 5°

PCS SERIES	SCALE N.T.S.	DRAWN BY YK
		APPROVED BY RCW

TITLE
PLB3W3F0000/AA

DATE 5-30-06	DRAWING NUMBER SK7494	REV. A
-----------------	--------------------------	-----------