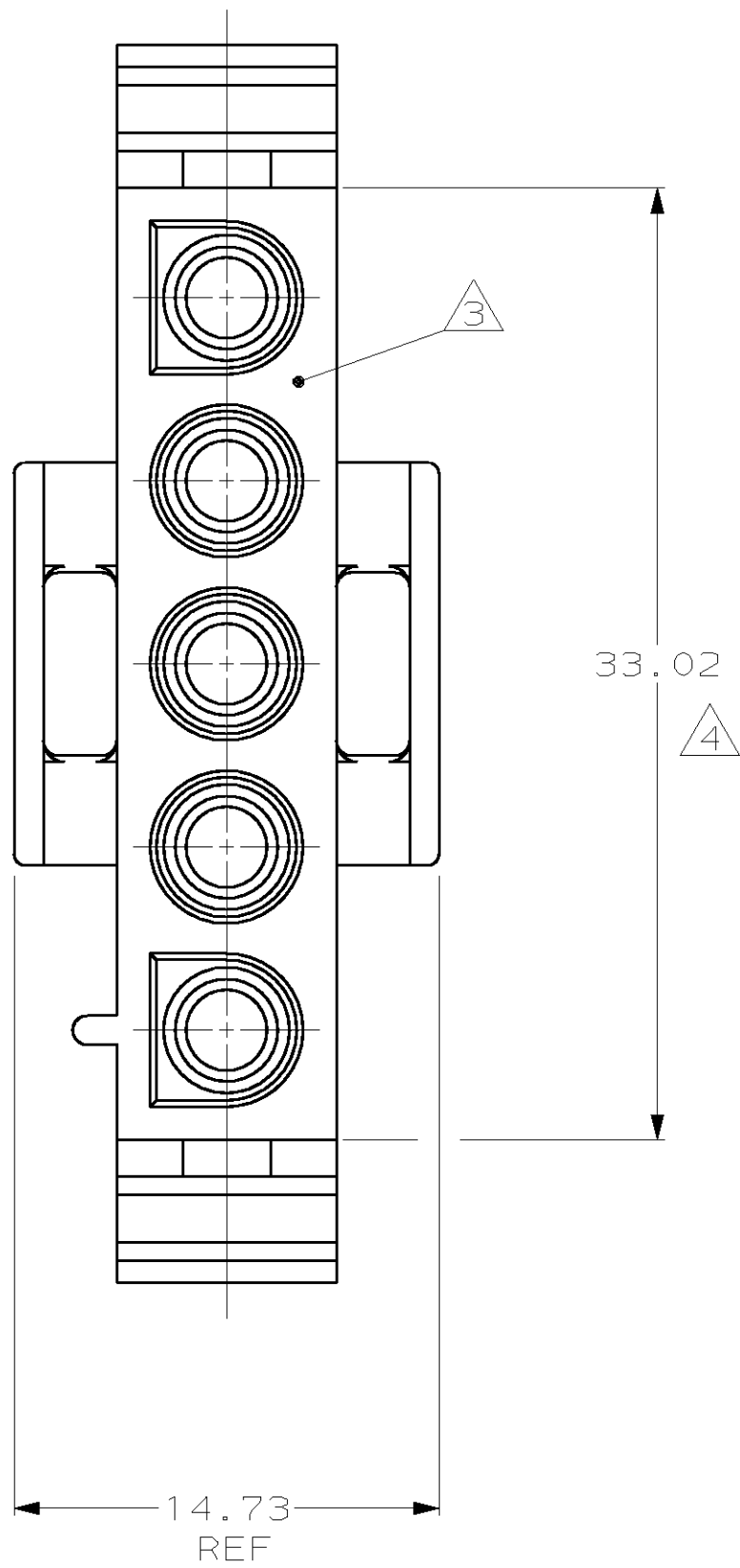
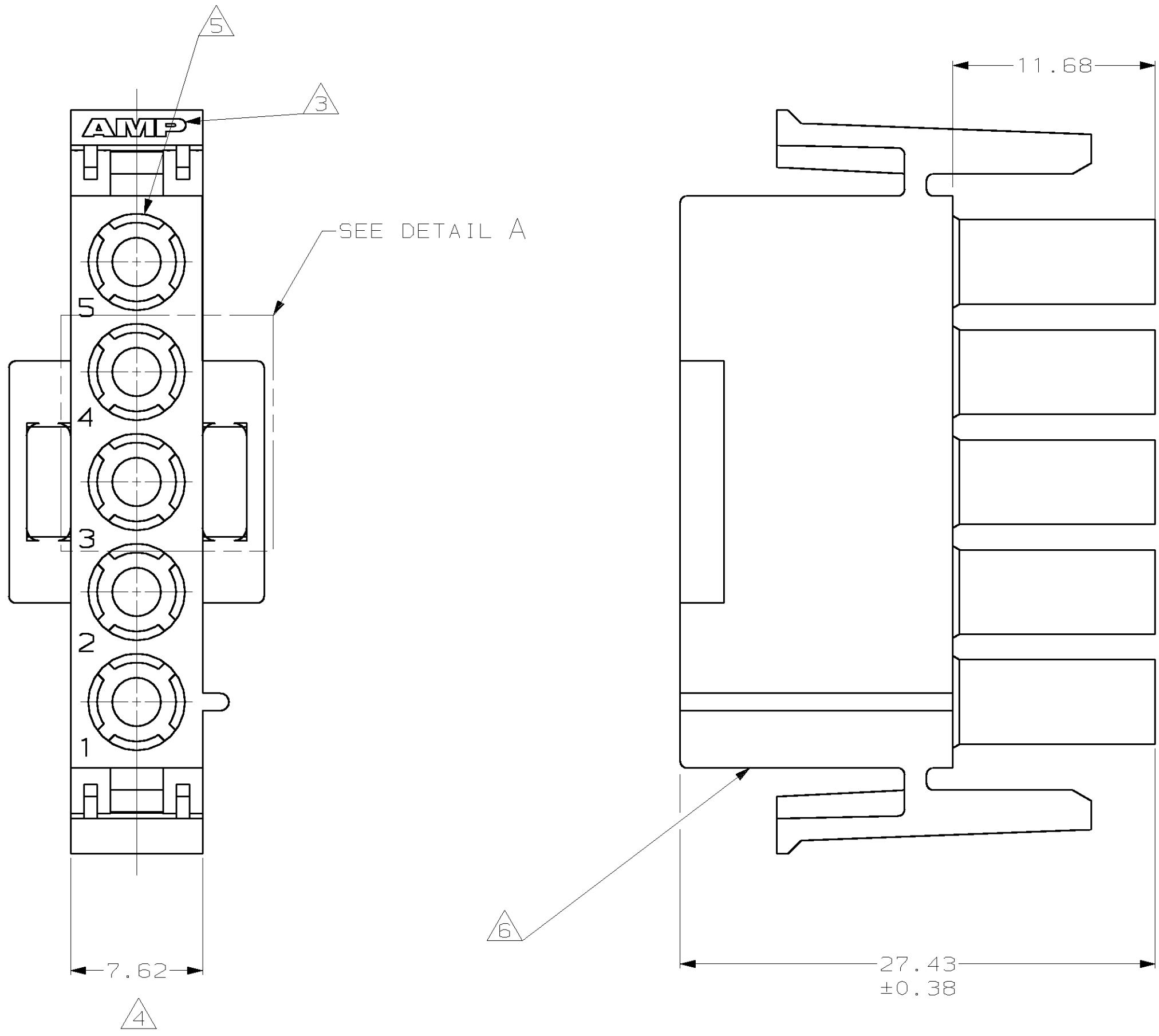
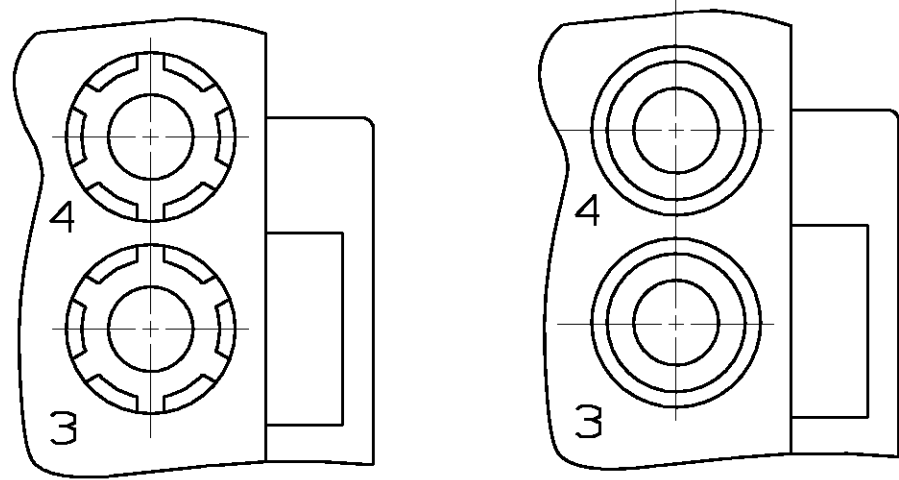
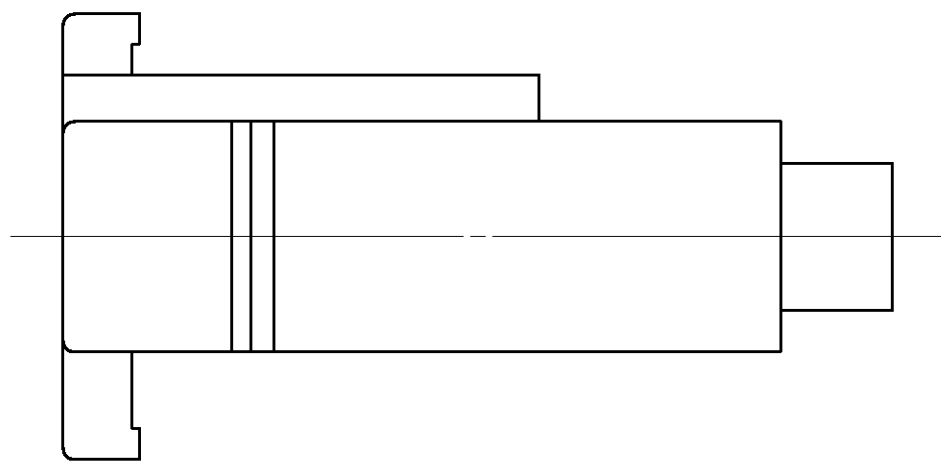


LOC		DIST		REVISIONS					
CM	53	P	LTR	DESCRIPTION			DATE	OWN	APVD
		AB		REV PER EC 061B-0229-98			18-FEB-99	JH	RS

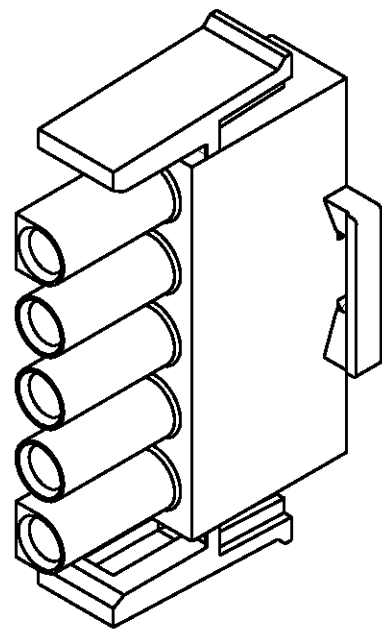


1. MATES WITH APPROPRIATE UNIVERSAL MATE-N-LOK™ CAP OR HEADER.
2. SMALL NICKS ARE PERMITTED ON THE CIRCUIT TOWERS WHICH COULD INCREASE THE INITIAL HOUSING MATING FORCE BY UP TO 4.4 NEWTONS [1.0 LBS]. NO INDIVIDUAL NICKED TOWER SHALL INCREASE THIS FORCE BY OVER 2.2 NEWTONS [0.5 LBS].

- △3 OPTIONAL: AMP LOGO MAY BE LOCATED ON THIS SURFACE.
- △4 DIMENSION INDICATED IS AS MOLDED. ADDITIONAL GROWTH DUE TO SUBSEQUENT MOISTURE ABSORPTION MAY OCCUR.
- △5 FOUR RIBS EQUALLY SPACED, NO SPECIFIC ORIENTATION. NO RIBS OR SIX RIBS EQUALLY SPACED, NO SPECIFIC ORIENTATION, OPTIONAL.
- △6 UNDERWRITERS RECOGNIZED COMPONENT LOGO AND CSA CERTIFICATION LOGO TO BE LOCATED ONCE EACH ON SIDE OF HOUSING.



DETAIL A  
OPTIONAL CONSTRUCTIONS



3-DIMENSIONAL MODEL  
NTS

33.02	1.300
27.43	1.080
14.73	.580
11.68	.460
7.62	.300
0.38	.015
0.13	.005
MM	IN
CONVERSION TABLE	

METRIC

THIS DRAWING IS A CONTROLLED DOCUMENT AND NOT TO BE REPRODUCED OR COPIED WITHOUT THE WRITTEN PERMISSION OF AMP INCORPORATED. IT IS SUBJECT TO CHANGE AND THE CONTROLLING ENGINEERING ORGANIZATION SHALL BE CONTACTED FOR THE LATEST REVISION.				OWN: R. VESTAL 2-24-99		AMP Incorporated Harrisburg, PA 17105-3608	
DIMENSIONS:				DR: R. SWING 2-24-99		AMP	
TOLERANCES UNLESS OTHERWISE SPECIFIED:				D: SELF 2-24-99		NAME	
mm				PRODUCT SPEC		SIZE	
0.13				APPLICATION SPEC		CAGE CODE	
0.13				WEIGHT		DRAWING NO	
0.13				CUSTOMER DRAWING		SCALE	
MATERIAL: NYLON, UL 94V-2				FINISH: -		SHEET	
FINISH: -				4:1		REV	
FINISH: -				AB		AB	

NATURAL	1-480763-0
RED	480763-2
COLOR	PART NUMBER