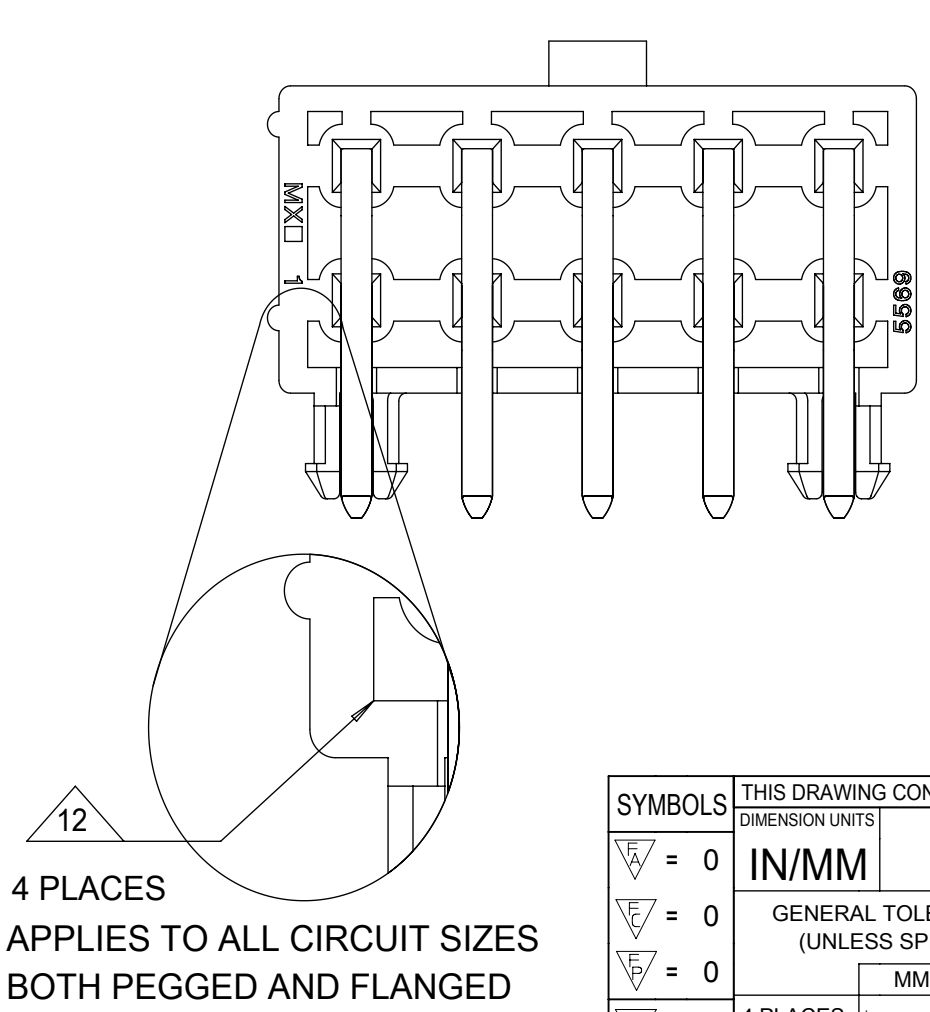


- NOTES:**
- MATERIALS:**
HOUSING MATERIAL OPTIONS: SEE CHART FOR SPECIFIC PART
 NYLON, UNFILLED, UL94V-2, COLOR: NATURAL
 NYLON, UNFILLED, UL94V-2, COLOR: BLACK
 NYLON, UNFILLED, UL94V-0, COLOR: NATURAL
 NYLON, UNFILLED, UL94V-0, COLOR: BLACK
 LCP GLASS FILLED, UL94V-0, COLOR: BLACK
 IEC 60335-1, 5TH EDITION GLOW WIRE CAPABLE,
 WITH PRESS FIT PEG -SEE SHEET 3
 TERMINALS: BRASS
 - FINISH (PLATING) OPTIONS:** SEE CHART FOR SPECIFIC PART
 "GS" = 0.00076/(.000030) MIN. SELECT GOLD AND
 0.00254/(.0000100) SELECT MATTE TIN OVER
 0.00127/(.000050) MIN. NICKEL
 "MS" = 0.00254/(.000100) MIN. MATTE TIN OVER
 0.00127/(.000050) MIN. NICKEL
 - PRODUCT SPECIFICATION:** PS-5556-004 FOR LCP GLASS FILLED MATERIAL,
 PS-5556-001 FOR ALL OTHER MATERIALS.
 - PACKAGING:** SEE CHART: BULK PER PK-5569-002
 TRAY PER PK-5569-003(PEGGED) OR PK-5569-004(FLANGES)
 - CIRCUITS SHOWN PROVIDE THE MAKE-FIRST/BREAK-LAST FEATURE.**
 SEE CHARTS ON SHEETS 3 & 4 FOR SPECIFIC CIRCUIT LOCATIONS.
 - PART MATES WITH MINI-FIT JR. RECEPTACLE #5557.**
 - CONNECTORS ARE NOT TO BE MATED OR UNMATED WHILE CIRCUITS ARE LIVE.**
 - PARTS ARE NOT DESIGNED FOR CURRENT SHARING.**
 - DISCOLORATION IN THE BANDOLIER CARRIER AREA OF THE PIN IS INHERENT TO THE PLATING PROCESS AND IS DUE TO THE MASKING EFFECT OF THE CARRIER. THIS DISCOLORATION, IF PRESENT, IS IN A NON-FUNCTIONAL AREA OF THE PIN AND WILL NOT EFFECT THE PERFORMANCE OF THE HEADER ASSEMBLY.**
 - PART CONFORMS TO CLASS "B" REQUIREMENTS OF COSMETIC SPECIFICATION PS-45499-002.**
 - FORMING MARKS ARE ACCEPTABLE.**
 - CORNER CORE-OUTS ARE OPTIONAL AND MAY OR MAY NOT BE PRESENT.**
 - TEXT ON PART IS FOR REFERENCE ONLY. TEXT AND TEXT LOCATION MAY VARY DEPENDING ON PART NUMBER AND/OR TOOL.**

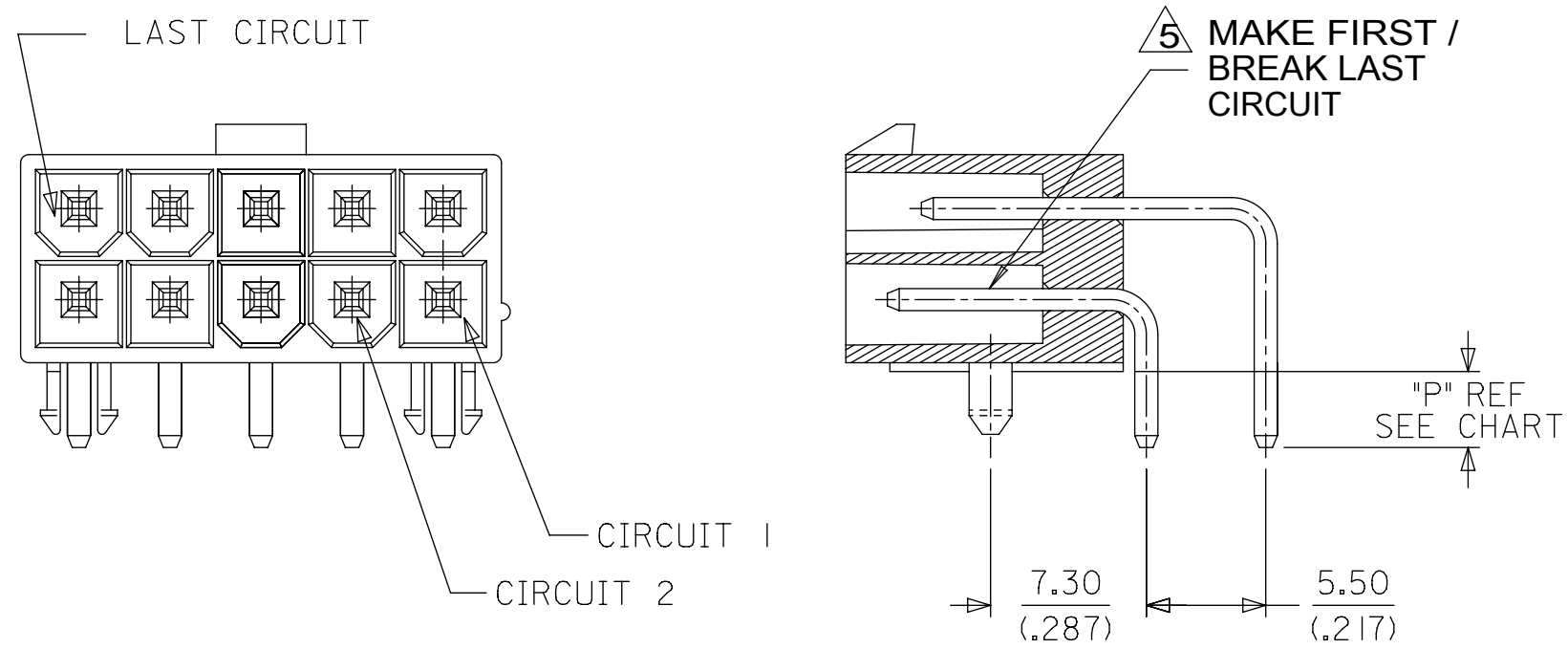


CIRCUIT SIZE	DIM. "A"	DIM. "B"	DIM. "C"	DIM. "D"
2	.606 (15.40)	N.A.	.213 (5.40)	.354 (9.00)
4	.772 (19.60)	.165 (4.20)	.378 (9.60)	.520 (13.20)
6	.937 (23.80)	.331 (8.40)	.543 (13.80)	.685 (17.40)
8	1.102 (28.00)	.496 (12.60)	.709 (18.00)	.850 (21.60)
10	1.268 (32.20)	.661 (16.80)	.874 (22.20)	1.016 (25.80)
12	1.433 (36.40)	.827 (21.00)	1.039 (26.40)	1.181 (30.00)
14	1.598 (40.60)	.992 (25.20)	1.205 (30.60)	1.346 (34.20)
16	1.764 (44.80)	1.157 (29.40)	1.370 (34.80)	1.512 (38.40)
18	1.929 (49.00)	1.323 (33.60)	1.535 (39.00)	1.677 (42.60)
20	2.094 (53.20)	1.488 (37.80)	1.701 (43.20)	1.843 (46.80)
22	2.260 (57.40)	1.654 (42.00)	1.866 (47.40)	2.008 (51.00)
24	2.425 (61.60)	1.819 (46.20)	2.031 (51.60)	2.173 (55.20)

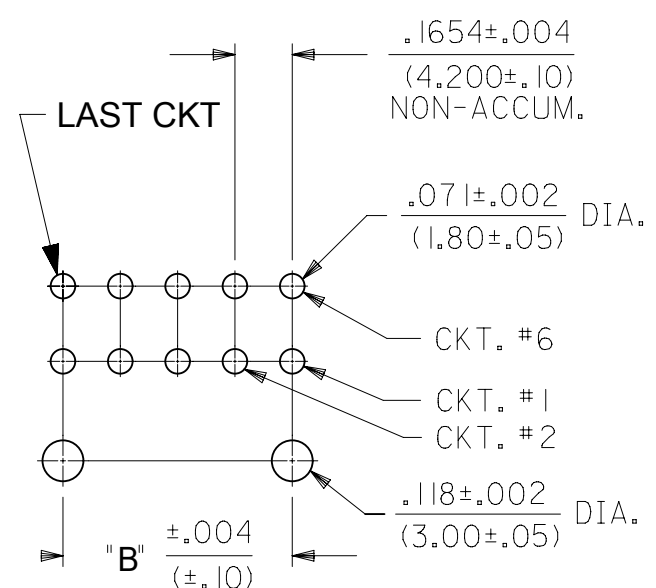
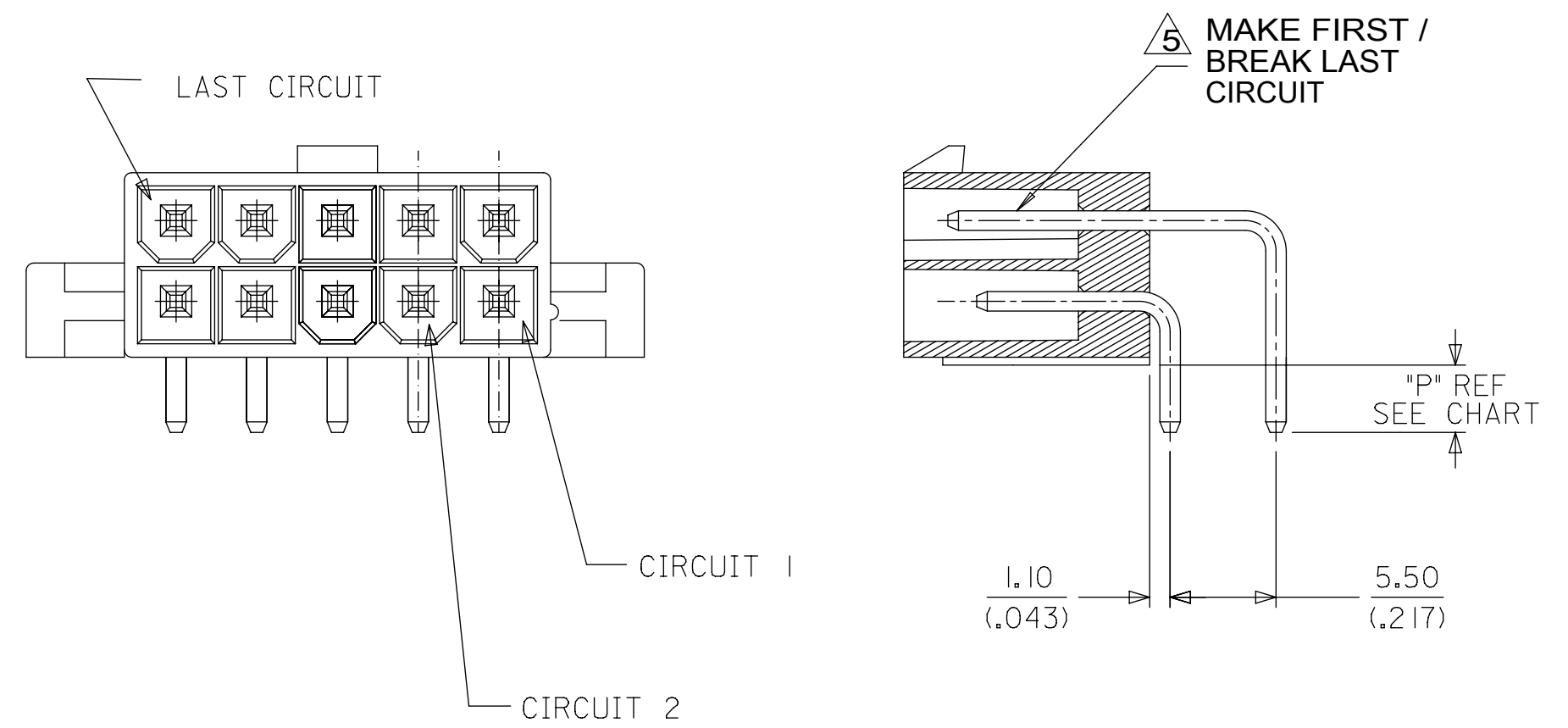
THIS DRAWING CONTAINS INFORMATION THAT IS PROPRIETARY TO MOLEX ELECTRONIC TECHNOLOGIES, LLC AND SHOULD NOT BE USED WITHOUT WRITTEN PERMISSION

SYMBOLS	DIMENSION UNITS	SCALE	CURRENT REV / DESC: ADD P/N 44130-0048
▽ = 0	IN/MM	4:1	
▽ = 0	GENERAL TOLERANCES (UNLESS SPECIFIED)		
▽ = 0		MM	INCH
▽ = 0	4 PLACES	±	±
▽ = 0	3 PLACES	±	± 0.015
▽ = 0	2 PLACES	± 0.38	± 0.015
▽ = 0	1 PLACE	± 0.38	±
▽ = 0	0 PLACES	±	±
▽ = 0	ANGULAR TOL ± 0.5°		
▽ = 0	DRAFT WHERE APPLICABLE MUST REMAIN WITHIN DIMENSIONS		
		THIRD ANGLE PROJECTION	DRAWING
			SERIES
			C-SIZE
			44130
		EC NO: 626690	DRWN: DSTEIER 2019/11/01
		CHK'D: MKIPPER	2019/11/19
		APPR: FSMITH	2019/12/02
		INITIAL REVISION:	
		DRWN: POLGAR	1998/01/23
		APPR: FSMITH	2011/05/18
		DOCUMENT NUMBER	DOC TYPE DOC PART REVISION
		SD-44130-001	PSD 000 E16
		MATERIAL NUMBER	CUSTOMER
		SEE CHART	GENERAL MARKET
		SHEET NUMBER	
		1 OF 5	

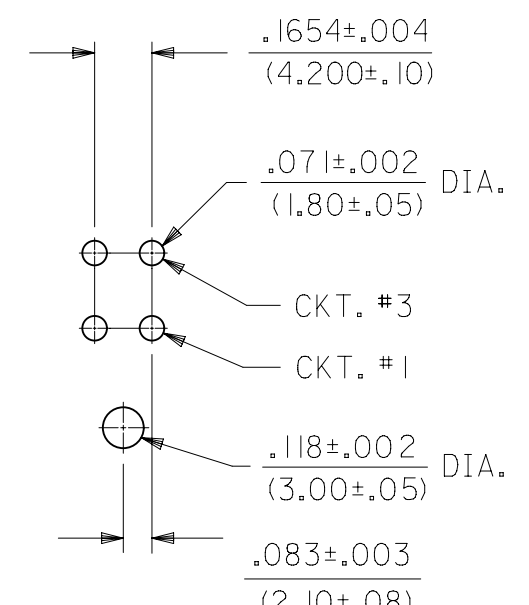
HOUSING WITH PEGS



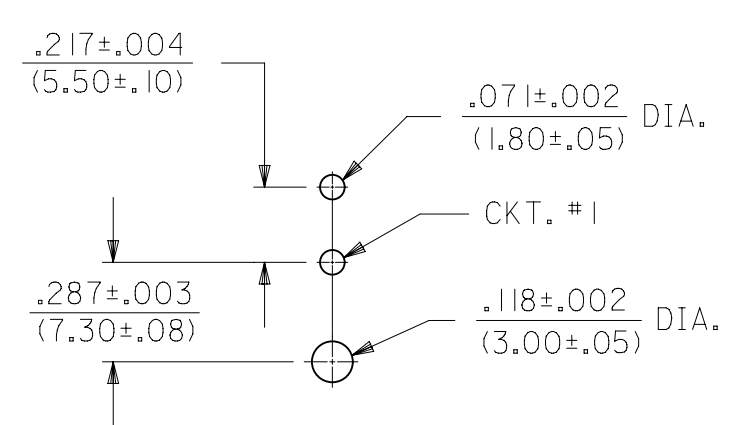
HOUSING WITH FLANGE



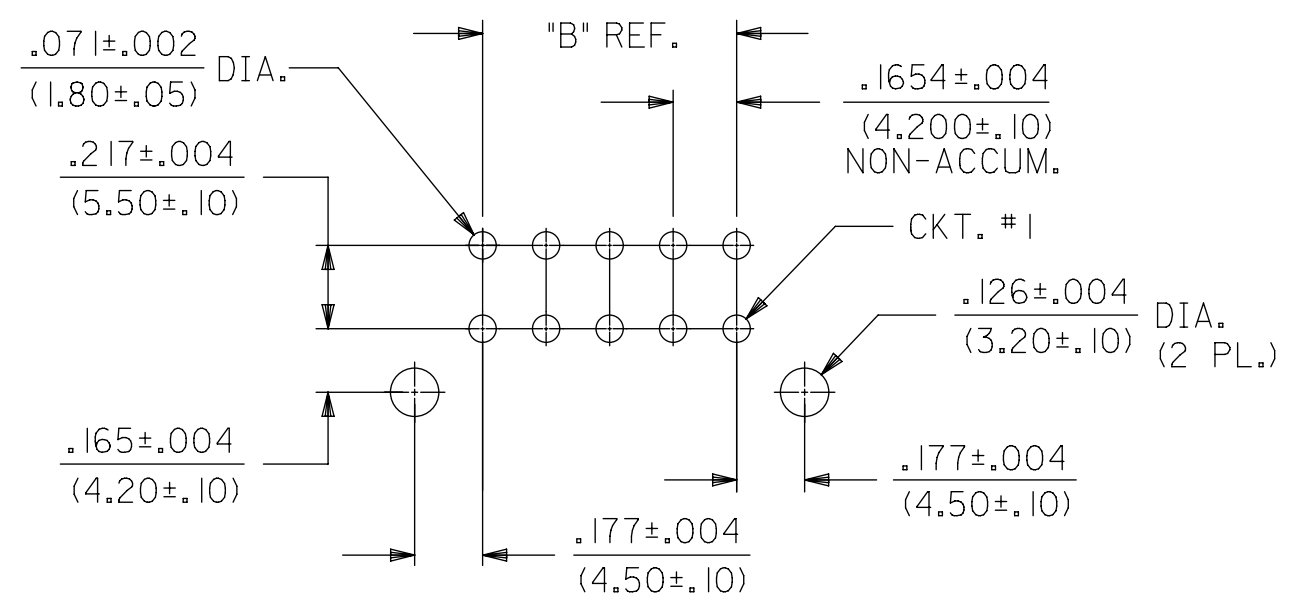
RECOMMENDED HOLE LAYOUT FOR .070/(1.78) MAX. THICK P.C. BOARD VIEWED FROM COMPONENT SIDE FOR 6 THRU 24 CIRCUITS



RECOMMENDED HOLE LAYOUT FOR .070/(1.78) MAX. THICK P.C. BOARD VIEWED FROM COMPONENT SIDE FOR 4 CIRCUIT PARTS



RECOMMENDED HOLE LAYOUT FOR .070/(1.78) MAX. THICK P.C. BOARD VIEWED FROM COMPONENT SIDE FOR 2 CIRCUIT PARTS



RECOMMENDED HOLE LAYOUT FOR .070/(1.78) MAX. THICK P.C. BOARD. (FLANGE MOUNT)

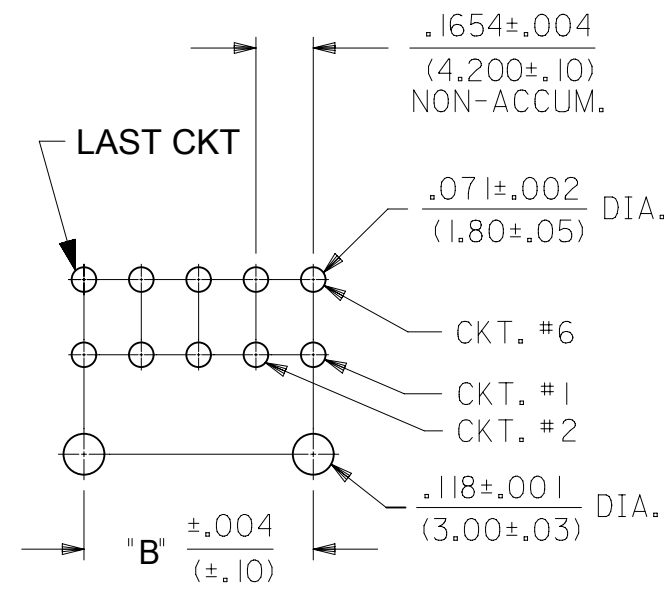
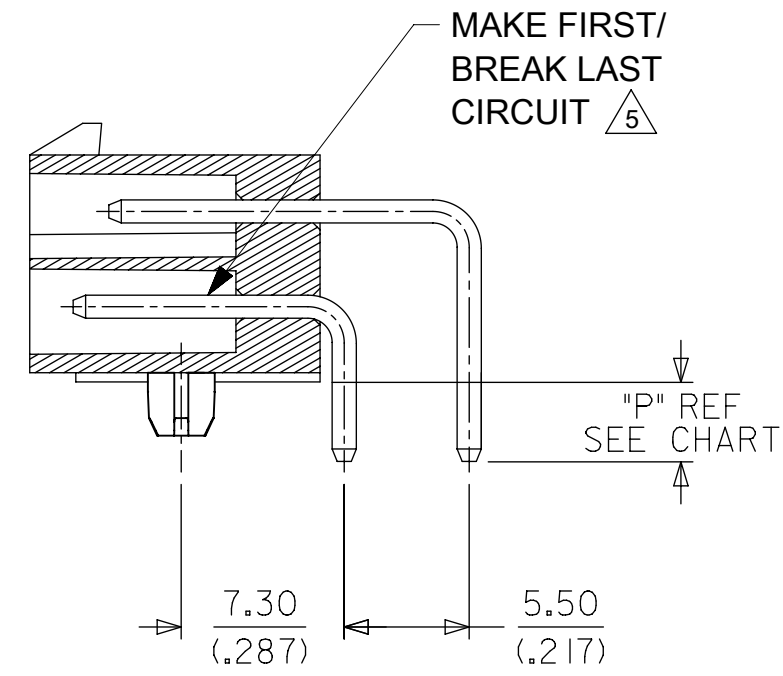
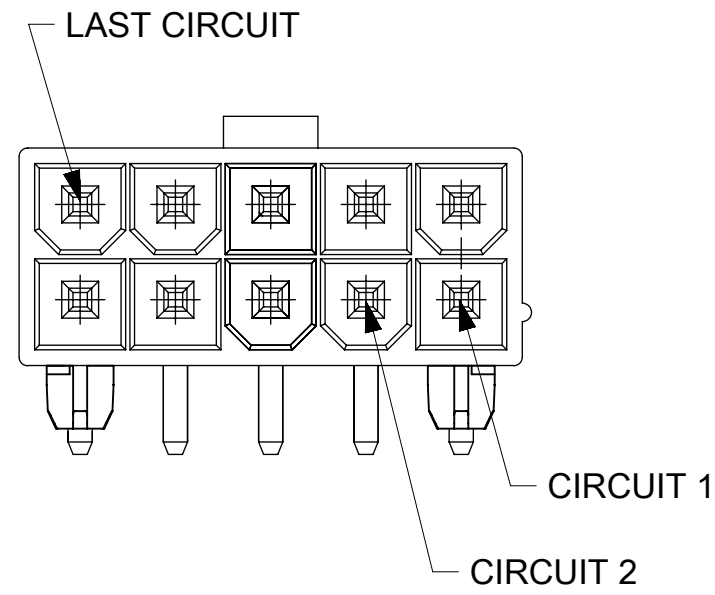
SYMBOLS	THIS DRAWING CONTAINS INFORMATION THAT IS PROPRIETARY TO MOLEX ELECTRONIC TECHNOLOGIES, LLC AND SHOULD NOT BE USED WITHOUT WRITTEN PERMISSION									
	DIMENSION UNITS		SCALE		CURRENT REV DESC: ADD P/N 44130-0048					
▽ = 0	IN/MM		4:1		EC NO: 626690 DRWN: DSTEIER 2019/11/01 CHK'D: MKIPPER 2019/11/19 APPR: FSMITH 2019/12/02					
▽ = 0	GENERAL TOLERANCES (UNLESS SPECIFIED)									
▽ = 0		MM	INCH		INITIAL REVISION: DRWN: POLGAR 1998/01/23 APPR: FSMITH 2011/05/18					
▽ = 0	4 PLACES	±	±							
▽ = 0	3 PLACES	±	± 0.015		1998/01/23 2011/05/18					
▽ = 0	2 PLACES	± 0.38	± 0.015							
▽ = 0	1 PLACE	± 0.38	±		DOCUMENT NUMBER: SD-44130-001 DOC TYPE: PSD DOC PART: 000 REVISION: E16					
▽ = 0	0 PLACES	±	±							
▽ = 0	ANGULAR TOL		± 0.5 °		THIRD ANGLE PROJECTION		DRAWING		SERIES	
▽ = 0	DRAFT WHERE APPLICABLE MUST REMAIN WITHIN DIMENSIONS				C-SIZE		44130		MATERIAL NUMBER: SEE CHART	
▽ = 0									CUSTOMER: GENERAL MARKET	
▽ = 0									SHEET NUMBER: 2 OF 5	

molex

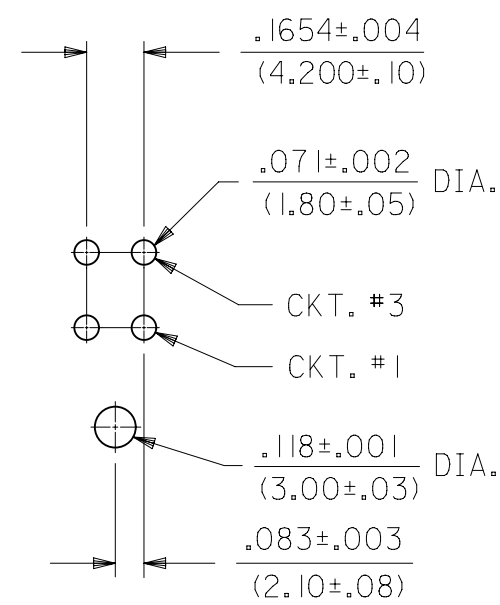
MINI-FIT JR
RIGHT ANGLE HEADER ASSY CUSTOM HEADERS

PRODUCT CUSTOMER DRAWING

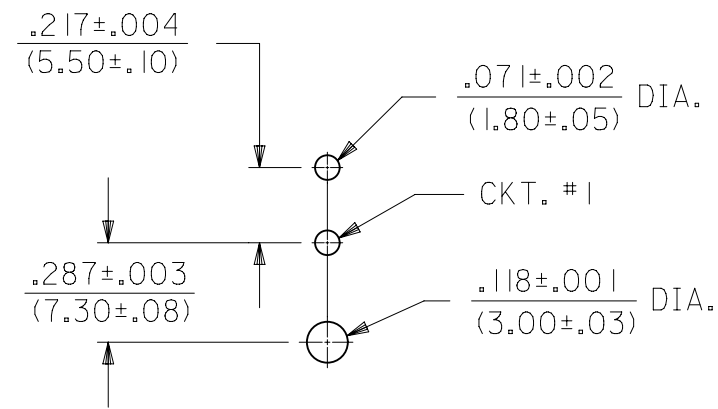
HOUSING WITH PRESS FIT PEGS



RECOMMENDED HOLE LAYOUT FOR .070/(1.78) MAX. THICK P.C. BOARD VIEWED FROM COMPONENT SIDE FOR 6 THRU 24 CIRCUITS



RECOMMENDED HOLE LAYOUT FOR .070/(1.78) MAX. THICK P.C. BOARD VIEWED FROM COMPONENT SIDE FOR 4 CIRCUIT PARTS



RECOMMENDED HOLE LAYOUT FOR .070/(1.78) MAX. THICK P.C. BOARD VIEWED FROM COMPONENT SIDE FOR 2 CIRCUIT PARTS

SYMBOLS	THIS DRAWING CONTAINS INFORMATION THAT IS PROPRIETARY TO MOLEX ELECTRONIC TECHNOLOGIES, LLC AND SHOULD NOT BE USED WITHOUT WRITTEN PERMISSION			
	DIMENSION UNITS	SCALE		CURRENT REV DESC: ADD P/N 44130-0048
$\nabla = 0$	IN/MM	4:1		molex MINI-FIT JR RIGHT ANGLE HEADER ASSY CUSTOM HEADERS
$\nabla = 0$	GENERAL TOLERANCES (UNLESS SPECIFIED)			
$\nabla = 0$		MM	INCH	EC NO: 626690 DRWN: DSTEIER 2019/11/01 CHK'D: MKIPPER 2019/11/19 APPR: FSMITH 2019/12/02
$\nabla = 0$	4 PLACES	±	±	INITIAL REVISION: DRWN: DRWN BY XXXX/XX/XX APPR: APPR BY XXXX/XX/XX
$\nabla = 0$	3 PLACES	±	± 0.015	
$\nabla = 0$	2 PLACES	± 0.38	± 0.015	PRODUCT CUSTOMER DRAWING DOCUMENT NUMBER: SD-44130-001 DOC TYPE: PSD DOC PART: 000 REVISION: E16
$\nabla = 0$	1 PLACE	± 0.38	±	
$\nabla = 0$	0 PLACES	±	±	MATERIAL NUMBER: GENERAL MARKET CUSTOMER: GENERAL MARKET SHEET NUMBER: 3 OF 5
$\nabla = 0$	ANGULAR TOL	± 0.5°		
$\nabla = 0$	DRAFT WHERE APPLICABLE MUST REMAIN WITHIN DIMENSIONS		THIRD ANGLE PROJECTION	DRAWING: C-SIZE SERIES: 44130

MATERIAL NUMBER	HOUSING MAT'L/COLOR	NO OF CKT	HOUSING OPTION	PKG	FINISH SEE NOTE #2	PIN IDENTIFICATION CODE / CIRCUIT LOCATION (SEE CHART BELOW) V = VOID																							
						CKT 1	CKT 2	CKT 3	CKT 4	CKT 5	CKT 6	CKT 7	CKT 8	CKT 9	CKT 10	CKT 11	CKT 12	CKT 13	CKT 14	CKT 15	CKT 16	CKT 17	CKT 18	CKT 19	CKT 20	CKT 21	CKT 22	CKT 23	CKT 24
44130-0001	NYLON 94V-2/BLACK	06	PEG	TRAY	MS					2																			
44130-0002	NYLON 94V-2/BLACK	08	PEG	TRAY	MS	2																							
44130-0003	NYLON 94V-0/BLACK	08	PEG	TRAY	MS	2																							
44130-0004	NYLON 94V-0/BLACK	06	PEG	TRAY	MS					2																			
44130-0006	NYLON 94V-0/NATURAL	04	PEG	BULK	MS	2	3	2	2																				
44130-0007	NYLON 94V-0/NATURAL	06	PEG	BULK	MS	2			2	2	2																		
44130-0008	NYLON 94V-0/NATURAL	10	FLANGES	BULK	MS	4	4	4	4	4	4	4	4	4															
44130-0009	NYLON 94V-0/NATURAL	06	PEG	TRAY	MS	V			2	2	2																		
44130-0013	NYLON 94V-0/NATURAL	06	FLANGES	TRAY	MS	2	2	2		2	2																		
44130-0015	NYLON 94V-2/NATURAL	24	PEG	TRAY	MS	2	2																			2			
44130-0017	NYLON 94V-0/BLACK	08	PEG	TRAY	MS		2																						
44130-0024	NYLON 94V-0/NATURAL	08	PEG	BULK	GS	2	2	5	2	2	5	2	2																
44130-0026	NYLON 94V-2/NATURAL	04	PEG	BULK	MS	8	8	8	8																				
44130-0027	NYLON 94V-0/NATURAL	02	PEG	BULK	MS	5	5																						
44130-0028	NYLON 94V-0/NATURAL	04	PEG	BULK	MS	8	8	8	8																				
44130-0030	NYLON 94V-0/NATURAL	06	PEG	TRAY	GS	2	1	2	2	2	2																		
44130-0031	NYLON 94V-0/NATURAL	08	PEG	BULK	MS	9	9	9	9	9	9	9																	

PIN ID	MATING CONFIGURATION	DIM P REF (PCB TAIL LENGTH)	PIN ID	MATING CONFIGURATION	DIM P (PCB TAIL LENGTH)
2	STANDARD MATING	3.5 (.14)			
3	MAKE FIRST/BREAK LAST (LONGER PIN)	4.9 (.19)			
4	STANDARD MATING	6.0 (.24)			
5	MAKE FIRST/BREAK LAST (LONGER PIN)	4.2 (.17)			
6	STANDARD MATING	4.2 (.17)			
8	STANDARD MATING	5.3 (.21)			

SYMBOLS	THIS DRAWING CONTAINS INFORMATION THAT IS PROPRIETARY TO MOLEX ELECTRONIC TECHNOLOGIES, LLC AND SHOULD NOT BE USED WITHOUT WRITTEN PERMISSION						
	DIMENSION UNITS		SCALE		CURRENT REV / DESC: ADD P/N 44130-0048		
▽ = 0	IN/MM		1:1		molex MINI-FIT JR RIGHT ANGLE HEADER ASSY CUSTOM HEADERS PRODUCT CUSTOMER DRAWING		
▽ = 0	GENERAL TOLERANCES (UNLESS SPECIFIED)						
▽ = 0		MM	INCH	EC NO: 626690 DRWN: DSTEIER 2019/11/01 CHK'D: MKIPPER 2019/11/19 APPR: FSMITH 2019/12/02			
▽ = 0	4 PLACES	±	±	INITIAL REVISION:			
▽ = 0	3 PLACES	±	± 0.015	DRWN: POLGAR 1998/01/23 APPR: FSMITH 2011/05/18			
▽ = 0	2 PLACES	± 0.38	± 0.015	DOCUMENT NUMBER: SD-44130-001 DOC TYPE: PSD DOC PART: 000 REVISION: E16			
▽ = 0	1 PLACE	± 0.38	±	MATERIAL NUMBER: SEE CHART CUSTOMER: GENERAL MARKET SHEET NUMBER: 4 OF 5			
▽ = 0	0 PLACES	±	±	DRAFT WHERE APPLICABLE MUST REMAIN WITHIN DIMENSIONS THIRD ANGLE PROJECTION DRAWING: C-SIZE SERIES: 44130			
▽ = 0	ANGULAR TOL ± 0.5 °						

MATERIAL NUMBER	HOUSING MAT'L/COLOR	NO OF CKT	HOUSING OPTION	PKG	FINISH SEE NOTE #2	PIN IDENTIFICATION CODE / CIRCUIT LOCATION (SEE CHART BELOW)																								V = VOID
						CKT 1	CKT 2	CKT 3	CKT 4	CKT 5	CKT 6	CKT 7	CKT 8	CKT 9	CKT 10	CKT 11	CKT 12	CKT 13	CKT 14	CKT 15	CKT 16	CKT 17	CKT 18	CKT 19	CKT 20	CKT 21	CKT 22	CKT 23	CKT 24	
44130-0032	NYLON 94V-0/NATURAL	16	PEG	TRAY	MS	8	8	8	8	8	8	8	8	8	8	8	8	8	8	8										
44130-0036	NYLON 94V-2/NATURAL	06	PEG	TRAY	MS	2	1	2	2	1	2																			
44130-0037	NYLON 94V-0/NATURAL	06	PEG	TRAY	MS	2	V	2	2	V	2																			
44130-0038	NYLON 94V-0/NATURAL	10	PEG	TRAY	MS	2	V	2	V	2	2	V	2	V	2															
44130-0039	NYLON 94V-0/NATURAL	04	PEG	TRAY	MS	1	2	2	2																					
44130-0040	NYLON 94V-0/NATURAL	04	PEG	TRAY	MS	2	1	2	2																					
44130-0041	NYLON 94V-0/NATURAL	06	PEG	TRAY	GS	2	V	1	2	V	2																			
44130-0043	NYLON 94V-0/NATURAL	24	FLANGES	TRAY	MS	V	2	V	2	V	2	V	2	V	2	V	2	V	2	V	2	V	2	V	2	V				
44130-0044 (N)	LCP 94V-0/BLACK	24	PRESSFIT PEGS	TRAY	MS	V	2	V	2	V	2	V	2	V	2	V	2	V	2	V	2	V	2	V	2	V				
44130-0045	NYLON 94V-0/NATURAL	24	PEG	TRAY	MS	V	2	V	2	V	2	V	2	V	2	V	2	V	2	V	2	V	2	V	2	V				
44130-0046	NYLON 94V-0/NATURAL	24	PEG	TRAY	GS	V	2	V	2	V	2	V	2	V	2	V	2	V	2	V	2	V	2	V	2	V				
44130-0047	NYLON 94V-0/NATURAL	10	PEG	TRAY	GS	2	V	2	V	2	V	2	V	2	V															
44130-0048	LCP 94V-0/BLACK	08	PRESSFIT PEGS	TRAY	MS	5	5	5	5	5	5	5	5																	

N= NOT TOOLED	PIN ID	MATING CONFIGURATION	DIM PREF (PCB TAIL LENGTH)
	1	MAKE FIRST/BREAK LAST (LONGER PIN)	3.5 (.14)
	2	STANDARD MATING	3.5 (.14)
	3	MAKE FIRST/BREAK LAST (LONGER PIN)	4.9 (.19)
	4	STANDARD MATING	6.0 (.24)
	5	MAKE FIRST/BREAK LAST (LONGER PIN)	4.2 (.17)
	6	STANDARD MATING	4.2 (.17)
	8	STANDARD MATING	5.3 (.21)

SYMBOLS	THIS DRAWING CONTAINS INFORMATION THAT IS PROPRIETARY TO MOLEX ELECTRONIC TECHNOLOGIES, LLC AND SHOULD NOT BE USED WITHOUT WRITTEN PERMISSION		
	DIMENSION UNITS	SCALE	CURRENT REV / DESC: ADD P/N 44130-0048
▽ = 0	IN/MM	1:1	<p>molex</p> <p>MINI-FIT JR RIGHT ANGLE HEADER ASSY CUSTOM HEADERS</p> <p>PRODUCT CUSTOMER DRAWING</p>
▽ = 0	GENERAL TOLERANCES (UNLESS SPECIFIED)		
▽ = 0	MM	INCH	
▽ = 0	4 PLACES ±	±	
▽ = 0	3 PLACES ±	± 0.015	
▽ = 0	2 PLACES ±	± 0.015	EC NO: 626690 DRWN: DSTEIER 2019/11/01 CHK'D: MKIPPER 2019/11/19 APPR: FSMITH 2019/12/02
▽ = 0	1 PLACE ±	±	INITIAL REVISION:
▽ = 0	0 PLACES ±	±	DRWN: POLGAR 1998/01/23 APPR: FSMITH 2011/05/18
▽ = 0	ANGULAR TOL	± 0.5 °	THIRD ANGLE PROJECTION DRAWING SERIES C-SIZE 44130
▽ = 0	DRAFT WHERE APPLICABLE MUST REMAIN WITHIN DIMENSIONS	MATERIAL NUMBER CUSTOMER SHEET NUMBER SEE CHART GENERAL MARKET 5 OF 5	