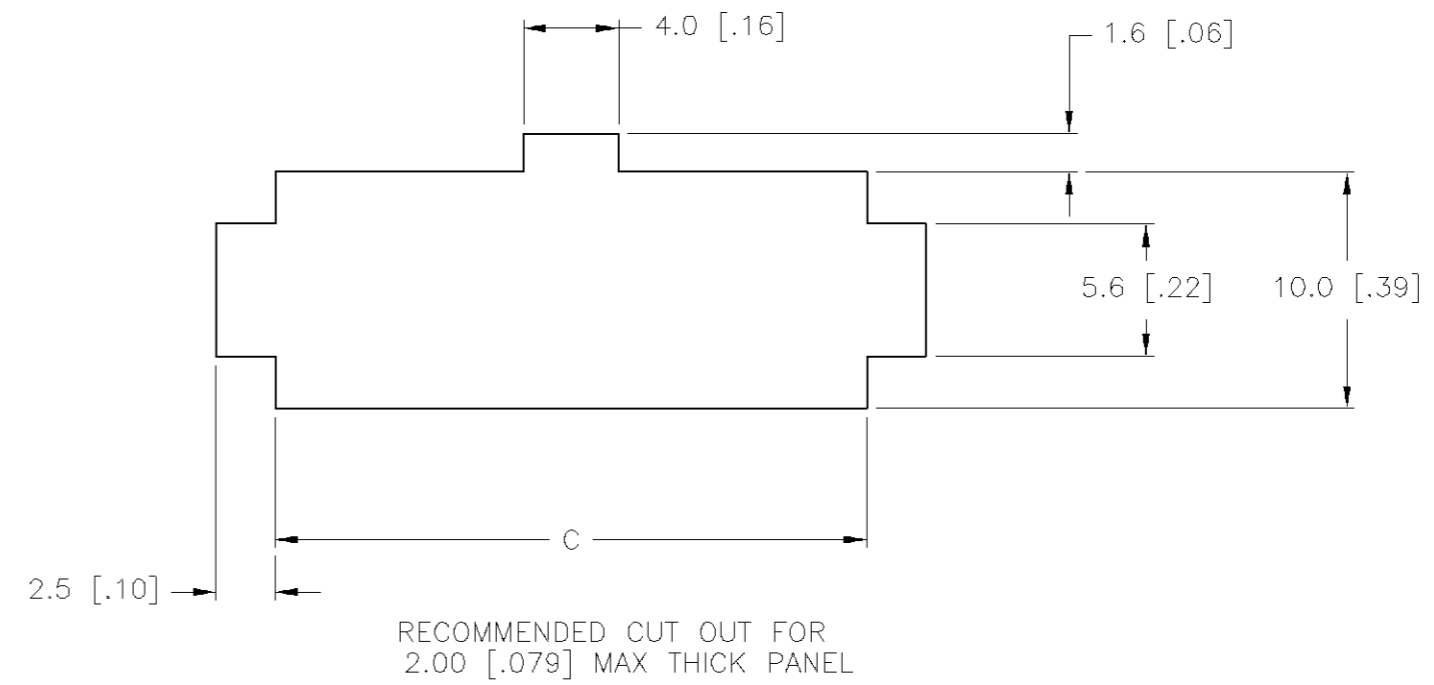
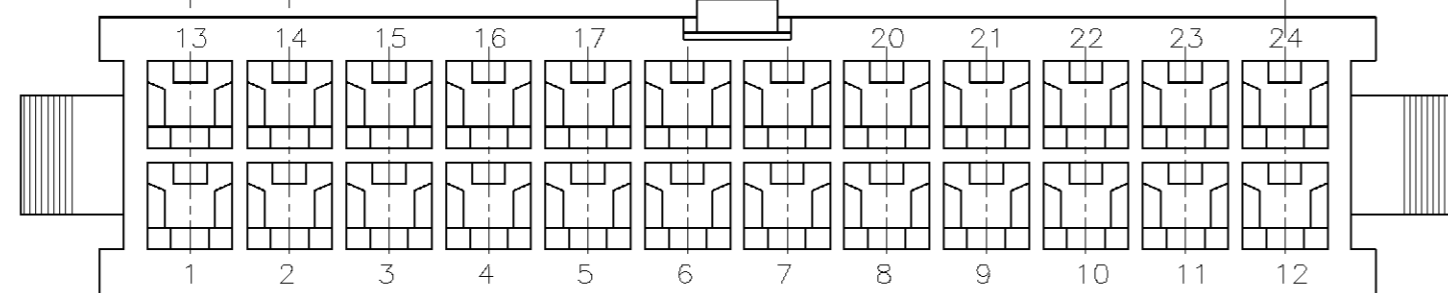
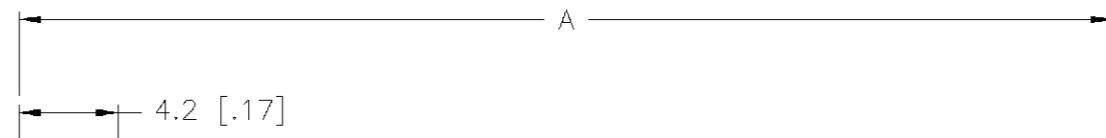
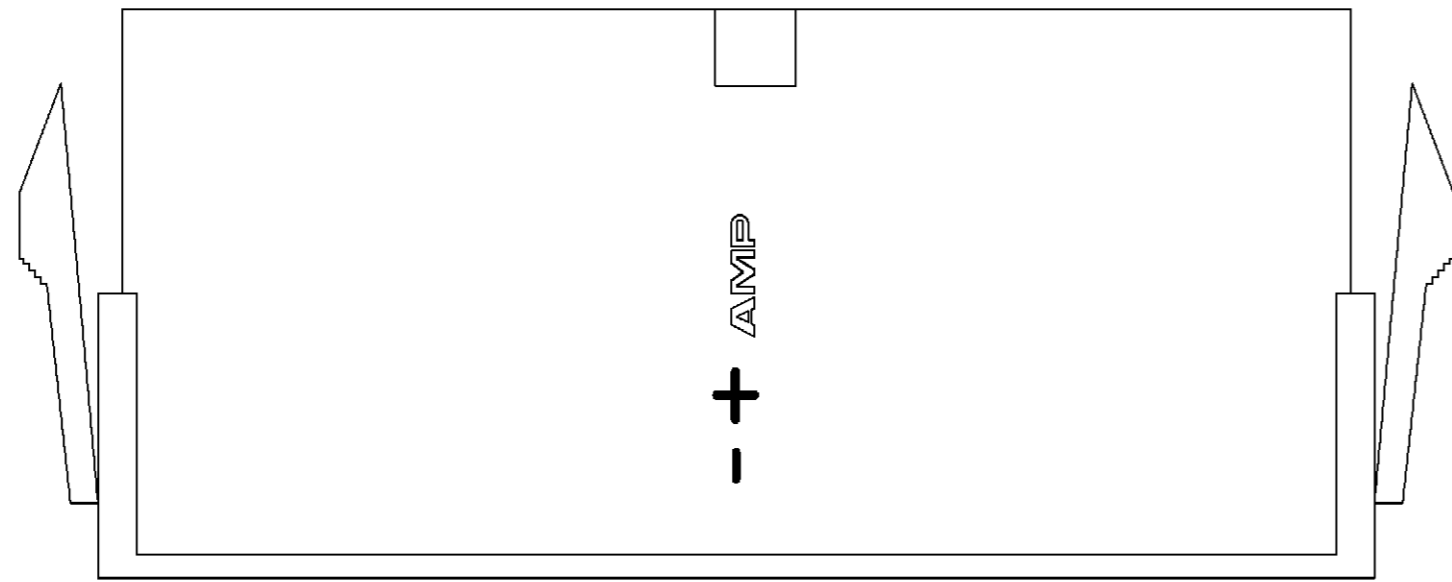
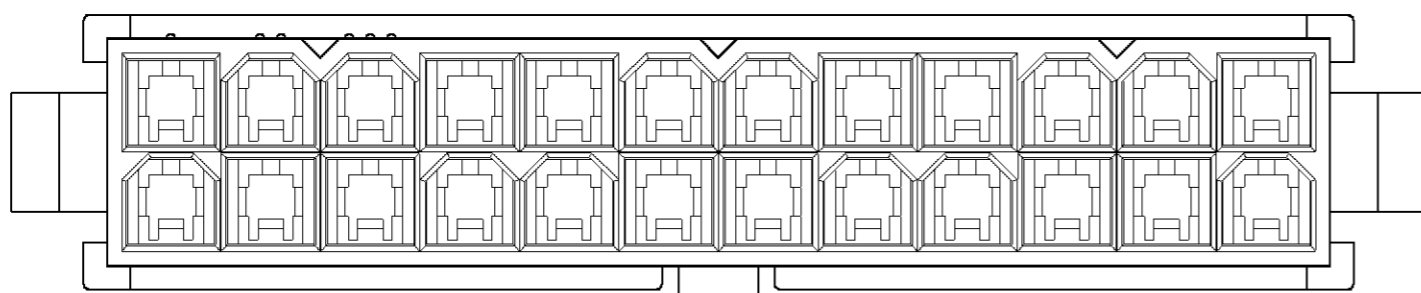
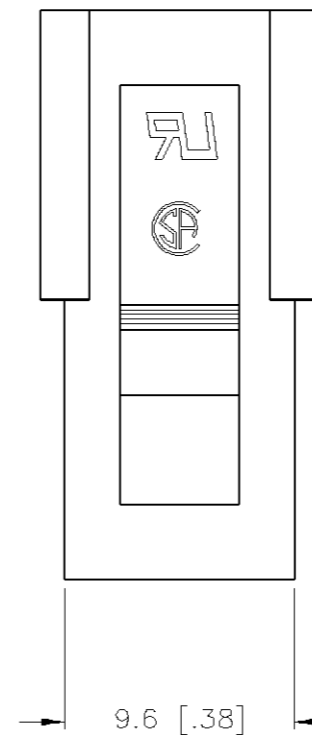
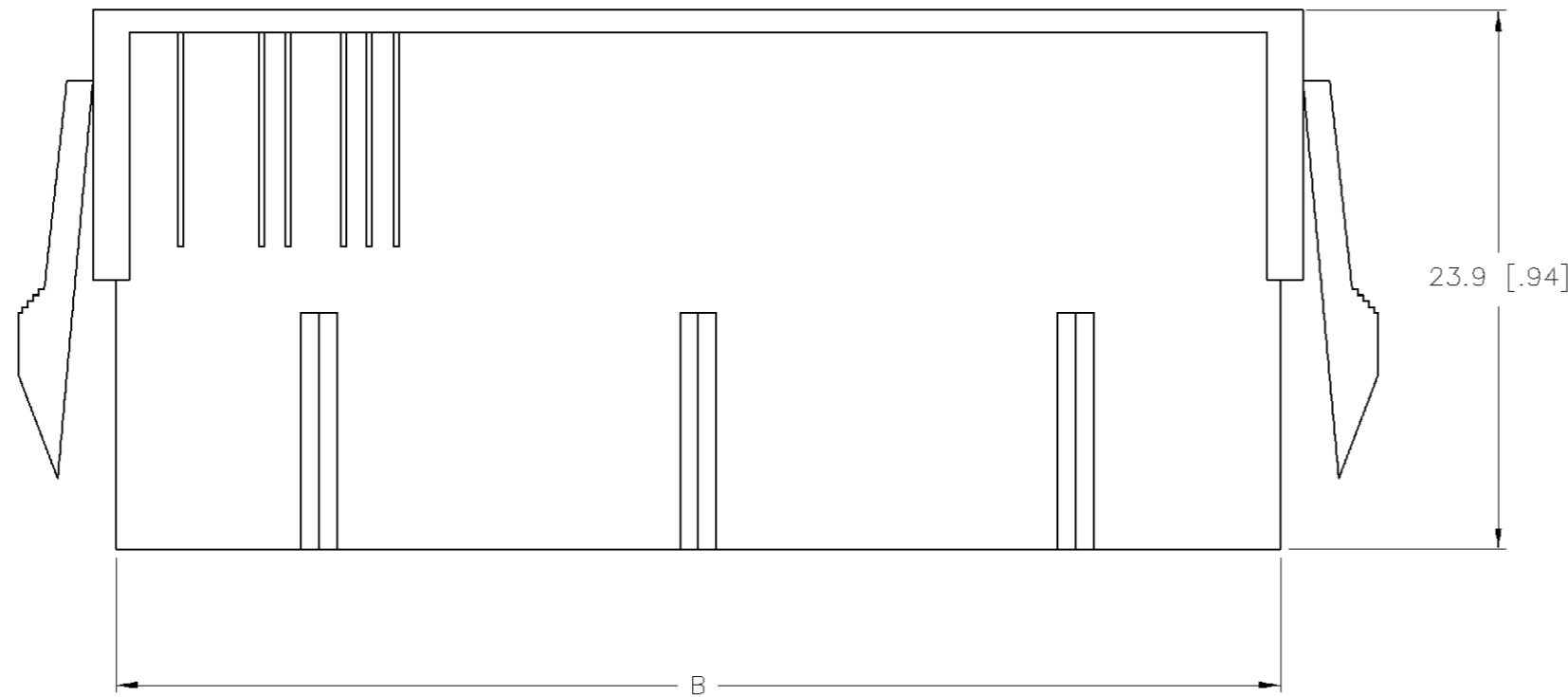
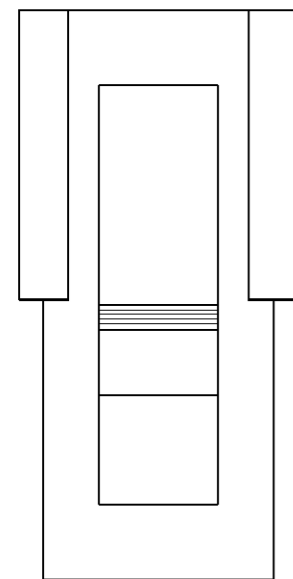


THIS DRAWING IS UNPUBLISHED. RELEASED FOR PUBLICATION
 © COPYRIGHT BY TYCO ELECTRONICS CORPORATION. ALL RIGHTS RESERVED.

LOC		DIST		REVISIONS			
P	LTR	DESCRIPTION		DATE	DWN	APVD	
	A	REVISED PER 0G3B-0032-02		17-JAN-02	KW	DC	



- 1. NYLON, UL94V-2, NATURAL.
- 2. PANEL MUST BE PUNCHED SO THAT THE HOUSING ENTERS THE PANEL IN THE SAME DIRECTION AS THE PUNCH.



DIM C	DIM B	DIM A	POS	PART NUMBER
52.0	51.6	46.2	24	2-794953-4
47.8	47.4	42.0	22	2-794953-2
43.6	43.2	37.8	20	2-794953-0
39.4	39.0	33.6	18	1-794953-8
35.2	34.8	29.4	16	1-794953-6
31.0	30.6	25.2	14	1-794953-4
26.8	26.4	21.0	12	1-794953-2
22.6	22.2	16.8	10	1-794953-0
18.4	18.0	12.6	8	794953-8
14.2	13.8	8.4	6	794953-6
10.0	9.6	4.2	4	794953-4
5.8	5.4	--	2	794953-2

THIS DRAWING IS A CONTROLLED DOCUMENT.

DWN S. HAMM 06-SEP-2001	Tyco Electronics Corporation Harrisburg, PA 17105-3608
CHK D. COLEY 06-SEP-2001	
APVD D. COLEY 06-SEP-2001	
PRODUCT SPEC	
APPLICATION SPEC	NAME
WEIGHT	PANEL MOUNT PLUG HOUSING, 4.2MM PE SERIES
MATERIAL	SIZE
FINISH	CAGE CODE
	DRAWING NO
	RESTRICTED TO
	A2 00779 C-794953
CUSTOMER DRAWING	SCALE
	SHEET 1 OF 1
	REV A