

**DESIGNED & DIMENSIONED
IN MILLIMETERS [INCHES]**

PESS-XX-XX-X-XX.XX-XX-XXX

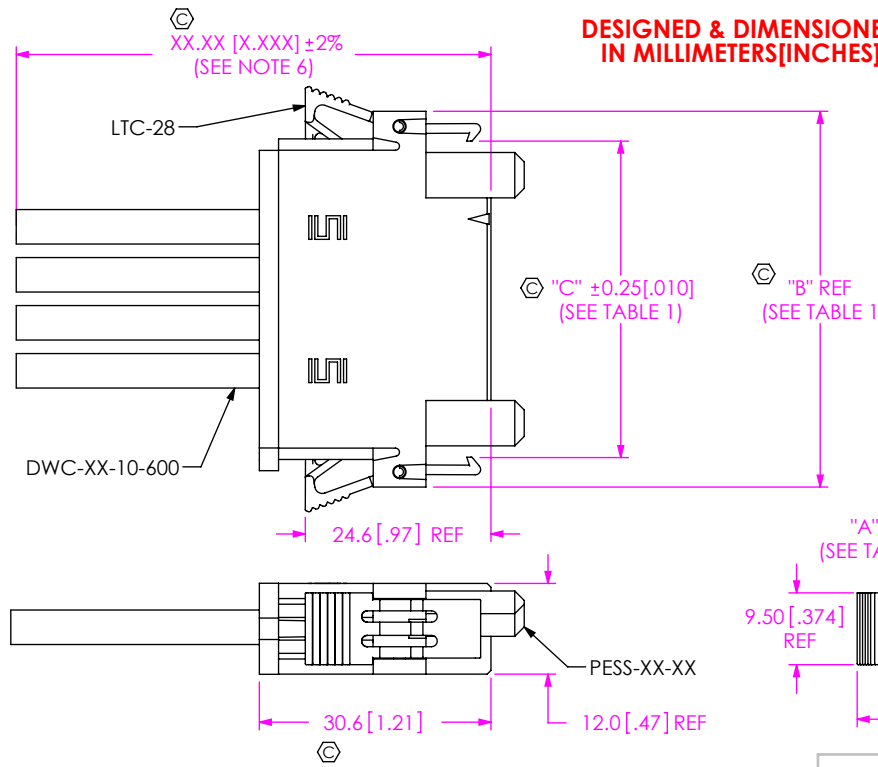


FIG 1
(PESS-04-XX-X-XX.XX-SR SHOWN)

- No OF POSITIONS**
 -02: 2 POSITIONS
 -04: 4 POSITIONS
 -06: 6 POSITIONS
 -08: 8 POSITIONS
- LEAD STYLE**
 -10: 10 AWG 600 V (C-310-1012-X)
 -12: 12 AWG 600 V (C-310-1012-X)
- PLATING SPECIFICATION**
 -L: LIGHT SELECTIVE, 10Au / 50 Ni MIN ON CONTACT, MATTE TIN CRIMP
 -S: SELECTIVE, 30Au / 50 Ni MIN ON CONTACT, MATTE TIN CRIMP
 -T: MATTE TIN, 200 TIN / 50 Ni MIN ON CONTACT, MATTE TIN CRIMP

- SECOND END OPTION**
 (ONLY AVAILABLE WITH -DR OPTION)
 -NUS: NOTCH UP STRAIGHT (SEE FIG 2, SHEET 2)
 -NDS: NOTCH DOWN STRAIGHT (SEE FIG 3, SHEET 2)

- END OPTION**
 -SR: SINGLE ENDED
 -DR: DOUBLE ENDED

ASSEMBLY LENGTH
 06.00 [152.4] MINIMUM LENGTH (SEE NOTE 6)

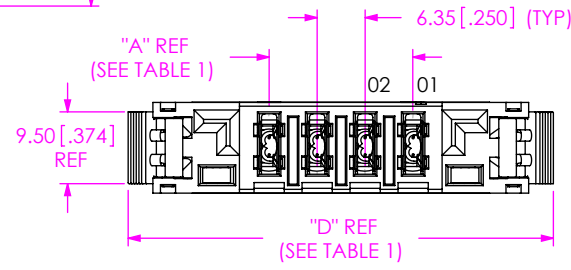
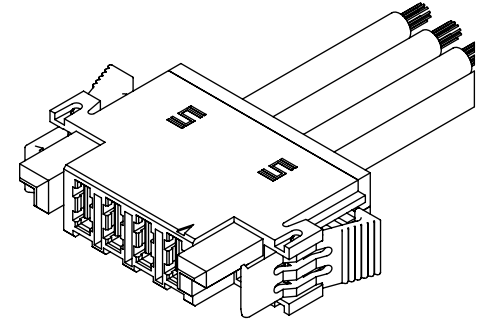


TABLE 2: OVERALL LENGTH SUBTRACTORS (SEE NOTE 10)

SERIES	"E"	"F"
PESS	0.623	1.246



OVERALL LENGTH "E"
(SEE TABLE 2)

-S: SINGLE END



OVERALL LENGTH "F"
(SEE TABLE 2)

-D: DOUBLE END

FIG 4
CABLE CUT IN-PROCESS

TABLE 1

No. OF POS	"A"	"B"	"C"	"D"
-02	6.35 [0.250]	37.01 [1.457]	29.21 [1.150]	43.9 [1.73]
-04	19.05 [0.750]	49.71 [1.957]	41.91 [1.650]	56.6 [2.23]
-06	31.75 [1.250]	62.41 [2.457]	54.61 [2.150]	69.3 [2.73]
-08	44.45 [1.750]	75.11 [2.957]	67.31 [2.650]	82.0 [3.23]

NOTES:

1. Ⓢ REPRESENTS A CRITICAL DIMENSION.
2. ALL ASSEMBLIES TO BE 100% HI-POT TESTED AT 1000V AND ELECTRICALLY TESTED FOR SHORTS AND OPENS. AFTER FINAL ELECTRICAL TEST, LABEL EACH ASSEMBLY WITH (1) ET STAMP ON THE BODY.
3. MINIMUM LATCH RETENTION: 4.4 N [1 LB].
4. MINIMUM PULL OUT FORCE 22.2N [5 LB].
5. PARTS TO BE LAYER PACKAGED; EACH END TO BE SEALED WITH TWO BUBBLE BAGS ASBBLT4X5.5 FOR A TOTAL OF 4 BAGS PER CABLE FOR -DR ASSEMBLIES. -SR ASSEMBLIES WILL ONLY USE 2 BAGS TOTAL.
6. ALL DIMS SHOWN IN METRIC EXCEPT FOR ASSEMBLY LENGTH ON PART CALL OUT.
7. NOTE DELETED.
8. CAP RETENTION: 4.4 N [1LB].
9. REFER TO CRIMP SPECIFICATIONS PRINT FOR CRIMP AND STRIP DIMENSIONS, TOLERANCES, TOOLING AND ITS REQUIREMENTS.
10. CUT LENGTH IS ASSEMBLY LENGTH MINUS OVERALL LENGTH SUBTRACTOR.

UNLESS OTHERWISE SPECIFIED, DIMENSIONS ARE IN MILLIMETERS.
 TOLERANCES ARE:
 DECIMALS ANGLES
 X.X: ±0.3 [.01] 2°
 X.XX: ±0.13 [.005]
 X.XXX: ±0.051 [.0020]

PROPRIETARY NOTE
 THIS DOCUMENT CONTAINS CONFIDENTIAL AND PROPRIETARY INFORMATION AND ALL DESIGN, MANUFACTURING, REPRODUCTION, USE, PATENT RIGHTS AND SALES RIGHTS ARE EXPRESSLY RESERVED BY SAMTEC, INC. THIS DOCUMENT SHALL NOT BE DISCLOSED, IN WHOLE OR PART, TO ANY UNAUTHORIZED PERSON OR ENTITY NOR REPRODUCED, TRANSFERRED OR INCORPORATED IN ANY OTHER PROJECT IN ANY MANNER WITHOUT THE EXPRESS WRITTEN CONSENT OF SAMTEC, INC.

MATERIAL: DO NOT SCALE DRAWING SHEET SCALE: 2:1
 INSULATOR: NYLON, BLACK
 CONTACT: COPPER ALLOY
 LATCH: NYLON, BLACK
 WIRE: PVC COATED TINNED COPPER



520 PARK EAST BLVD., NEW ALBANY, IN 47150
 PHONE: 812-944-6733 FAX: 812-948-5047
 e-Mail: info@SAMTEC.com code 53322

DESCRIPTION: PESS CABLE ASSEMBLY
 DWG. NO. PESS-XX-XX-X-XX.XX-XX-XXX
 BY: E WRIGHT 02/16/2010 SHEET 1 OF 2

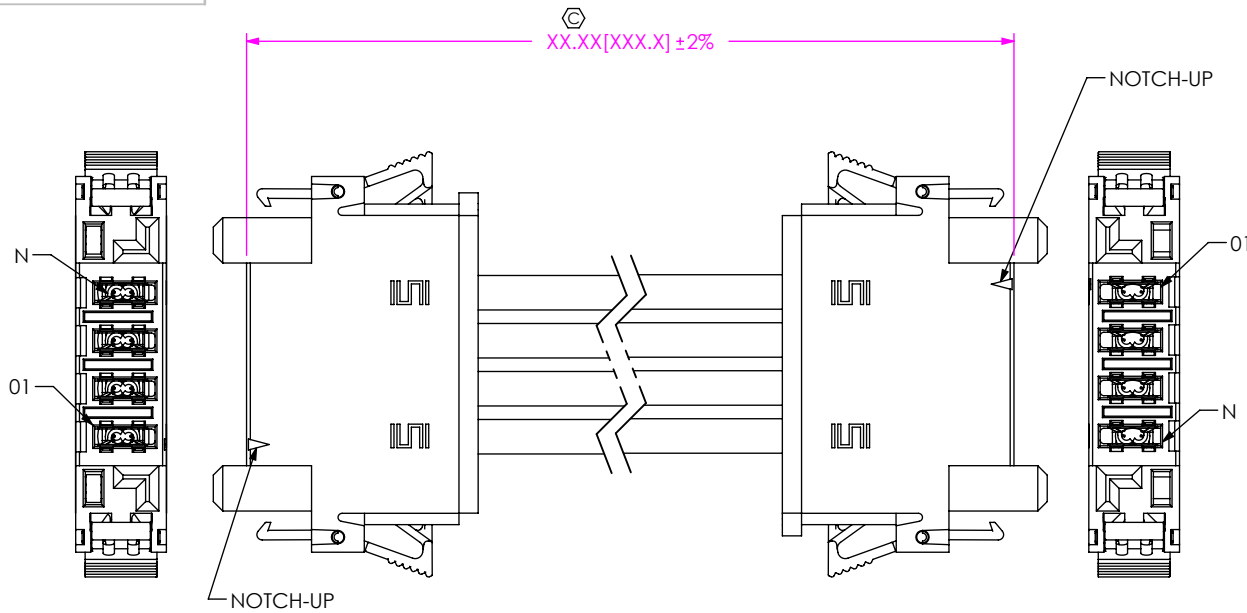
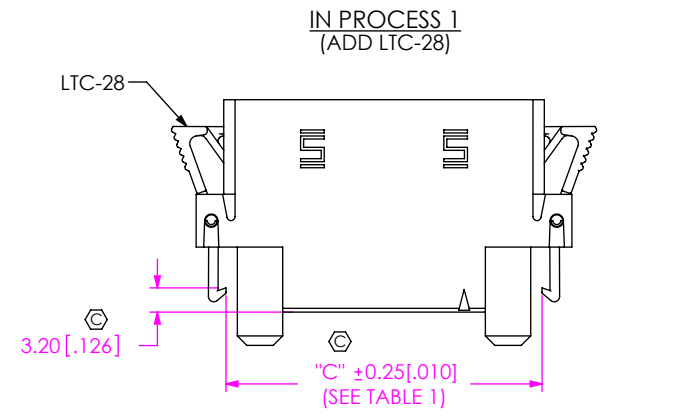
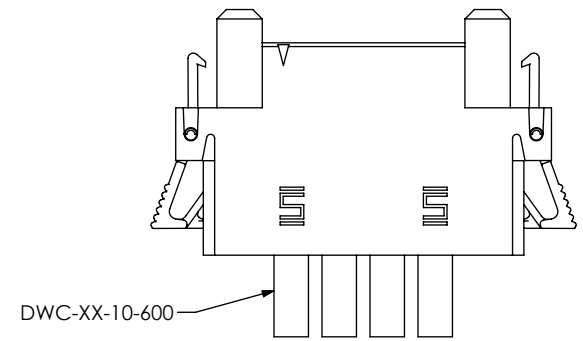


FIG 2
(PESS-04-XX-X-XX.XX-DR-NUS)
(SAME AS FIG 1, DIFFERENT AS SHOWN)



IN PROCESS 2
(FILL DWC-XX-10-600)



IN PROCESS 3
(ADD IPS6C-XX-X)

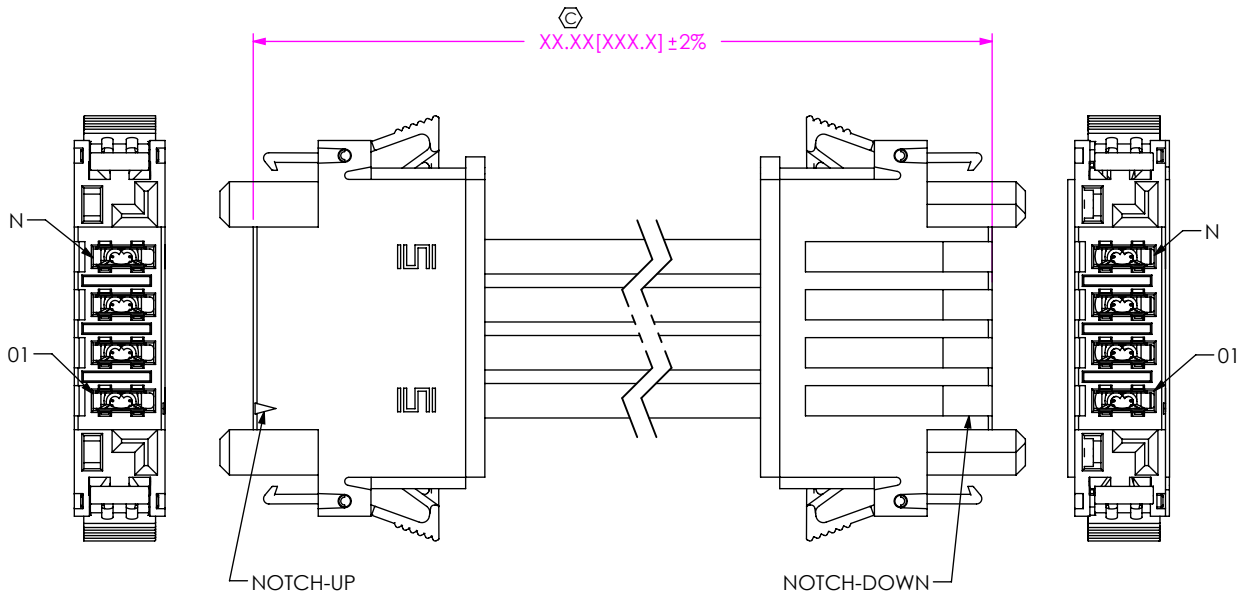
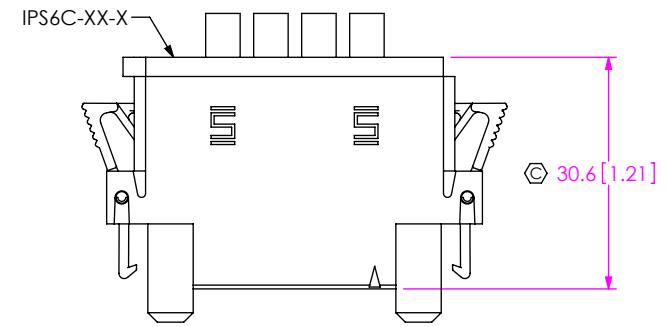


FIG 3
(PESS-04-XX-X-XX.XX-DR-NDS)
(SAME AS FIG 1, DIFFERENT AS SHOWN)

PROPRIETARY NOTE
THIS DOCUMENT CONTAINS CONFIDENTIAL AND PROPRIETARY INFORMATION AND ALL DESIGN, MANUFACTURING, REPRODUCTION, USE, PATENT RIGHTS AND SALES RIGHTS ARE EXPRESSLY RESERVED BY SAMTEC, INC. THIS DOCUMENT SHALL NOT BE DISCLOSED, IN WHOLE OR PART, TO ANY UNAUTHORIZED PERSON OR ENTITY NOR REPRODUCED, TRANSFERRED OR INCORPORATED IN ANY OTHER PROJECT IN ANY MANNER WITHOUT THE EXPRESS WRITTEN CONSENT OF SAMTEC, INC.



520 PARK EAST BLVD, NEW ALBANY, IN 47150
PHONE: 812-944-6733 FAX: 812-948-5047
e-Mail info@SAMTEC.com code 55322

DO NOT SCALE DRAWING

SHEET SCALE: 2:1

DESCRIPTION: PESS CABLE ASSEMBLY

DWG. NO. PESS-XX-XX-X-XX.XX-XX-XXX

BY: E WRIGHT 02/16/2010 SHEET 2 OF 2