

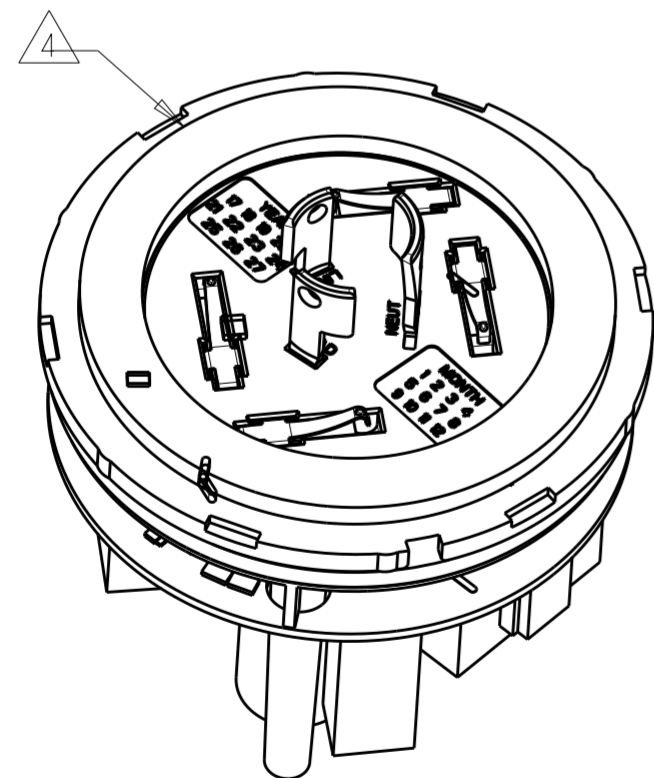
P	LTR	DESCRIPTION	DATE	DWN	APVD
A		ECO-20-011950	26AUG2020	MHS	DD

ABSOLUTE MAXIMUM RATINGS	SYMBOL	MIN	MAX	UNIT
STORAGE TEMPERATURE	$T_{stg}$	-40	105	°C
LINE TO NEUTRAL VOLTAGE	$V_{in}$	90	300	VAC
MAXIMUM AC CURRENT (RESISTIVE)	$A_{switch}$	--	8	AMPS

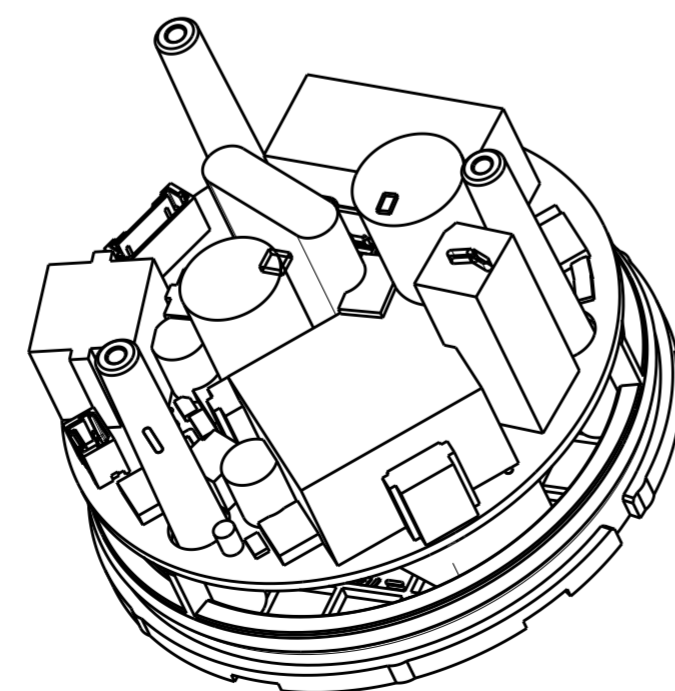
ELECTRICAL CHARACTERISTICS	
INPUT VOLTAGE RANGE	110/120, 230/240 AND 277 VAC NOMINAL SOURCES
INPUT FREQUENCY	47-63 Hz FOR 50/60 Hz NOMINAL SOURCES
MAXIMUM AC CURRENT	8 AMPS (RESISTIVE), 5 AMPS (ELECTRONIC BALLAST)@120V, 3AMPS @277V
DC POWER SUPPLIES	
DIMMING	24 VDC AT 50 mA MAXIMUM
COMMUNICATIONS	5 VDC AT 1000 mA MAXIMUM
AUXILIARY	3.3VDC AT 500 mA MAXIMUM
SURGE PROTECTION	ANSI C62.41 6 kV, 3 kA COMBINATION WAVE SURGE PROTECTION
POWER CONSUMPTION (MIN LOAD)	< 1W @ 120 VAC, < 2W @ 277 VAC
FAIL MODE	ON (NORMALLY CLOSED) OR OFF (NORMALLY OPEN)

ENVIRONMENTAL CHARACTERISTICS	
OPERATING TEMPERATURE	-40°C TO +85°C (SEE 114-133085 FOR DETAILS)
RELATIVE HUMIDITY	OPERATING: 15% TO 96%, NON-CONDENSING ENVIRONMENT.
ALTITUDE	OPERATING: -15m TO +2,000m NON-OPERATING: -15m TO +14,000m

- 1 MATERIALS:  
HOUSING: PBT  
DIMMING CONTACTS (QTY. 4): COPPER ALLOY  
LINE VOLTAGE CONTACTS (QTY. 3): COPPER ALLOY  
GASKET: VINYL/NITRILE FOAM  
O-RING: SILICONE RUBBER  
PCBA: FR4
- 2 FINISH:  
DIMMING CONTACTS: NICKEL UNDERPLATE ENTIRE  
CONTACT 0.127 μm MIN THICK. SELECTIVE GOLD PLATE CONTACT MATING AREA (MATING FACE SIDE ONLY) 0.76 μm MIN THICK. MATTE TIN PLATE TAB ON BOTH SIDES 0.30 μm MIN THICK.  
LINE VOLTAGE CONTACTS: MATTE TIN PLATE
- 3 MATING INTERFACE PER ANSI C136.41-2013.
- 4 ADHESIVE BACKED GASKET SUPPLIED BUT NOT INSTALLED.
- 5 ADDITIONAL COVERS (P/N: 2306130-X) AVAILABLE CONTACT TE CONNECTIVITY FOR MORE OPTIONS.
- 6. THIS PRODUCT HAS NOT COMPLETED VALIDATION TESTING.
- 7. MUST COMPLY WITH DIRECTIVE 2002/95/EC (ROHS)
- 8. IN ADDITION TO THE STANDARD PRODUCT PART NUMBERS, OTHER CONFIGURATIONS MAY BE AVAILABLE FOR SPECIAL ORDER. PLEASE CONTACT A TE CONNECTIVITY SALES OFFICE FOR MORE INFO.



SCALE 1:1



SCALE 1:1

50Hz	YES	YES	OFF	1-2314786-2
50Hz	YES	YES	ON	1-2314786-1
60Hz	YES	YES	OFF	2314786-2
60Hz	YES	YES	ON	2314786-1
FREQ.	ENERGY METERING HEADER	ZERO CROSS	FAIL MODE	PART NO.

THIS DRAWING IS A CONTROLLED DOCUMENT.

DWN: C. DAILY 30DEC2016  
CHK: C. GINGRICH 30DEC2016  
APVD: C. GINGRICH

**STE** TE Connectivity

NAME: ASSEMBLY, LUMAWISE ENDURANCE N ENHANCED BASE

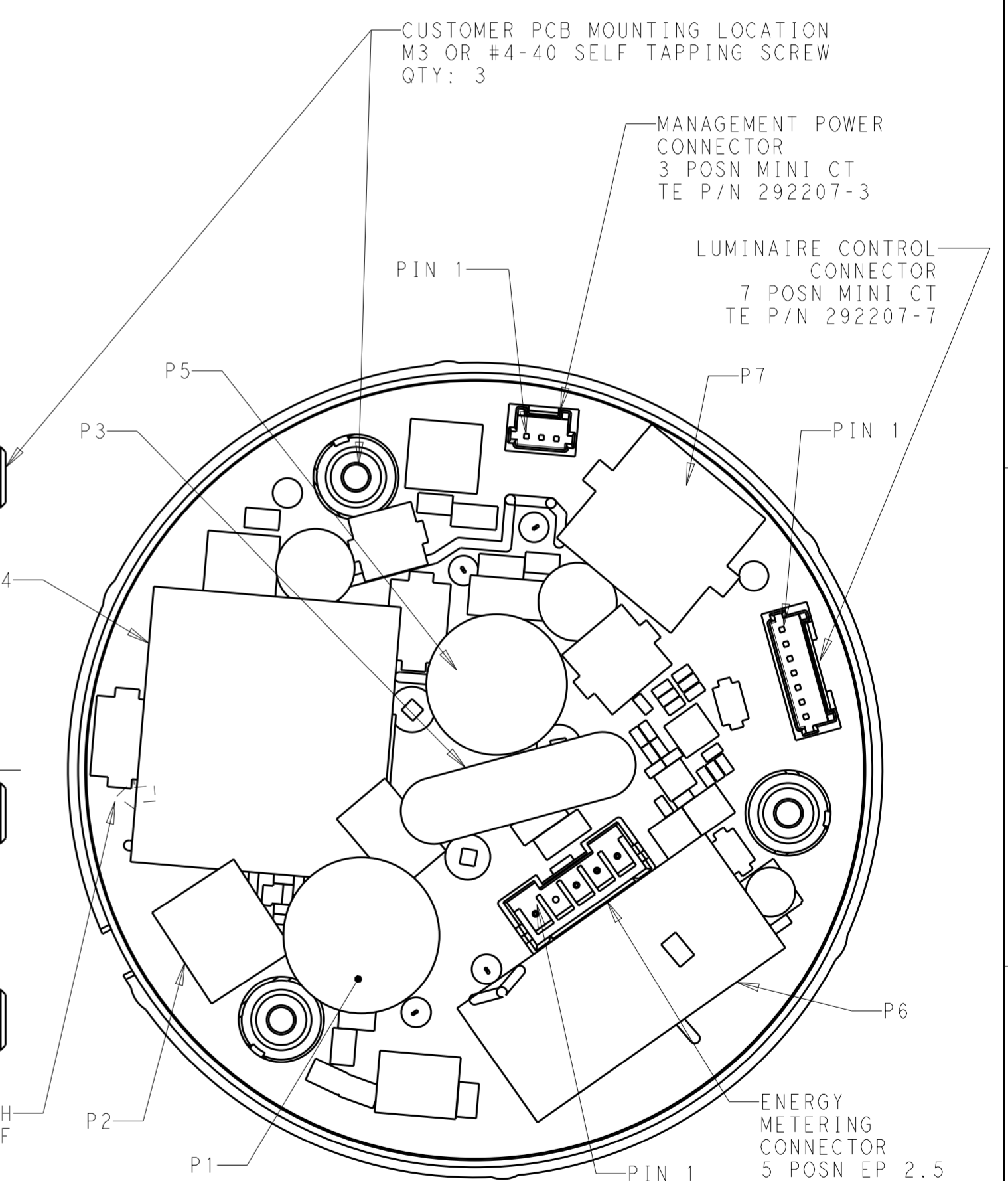
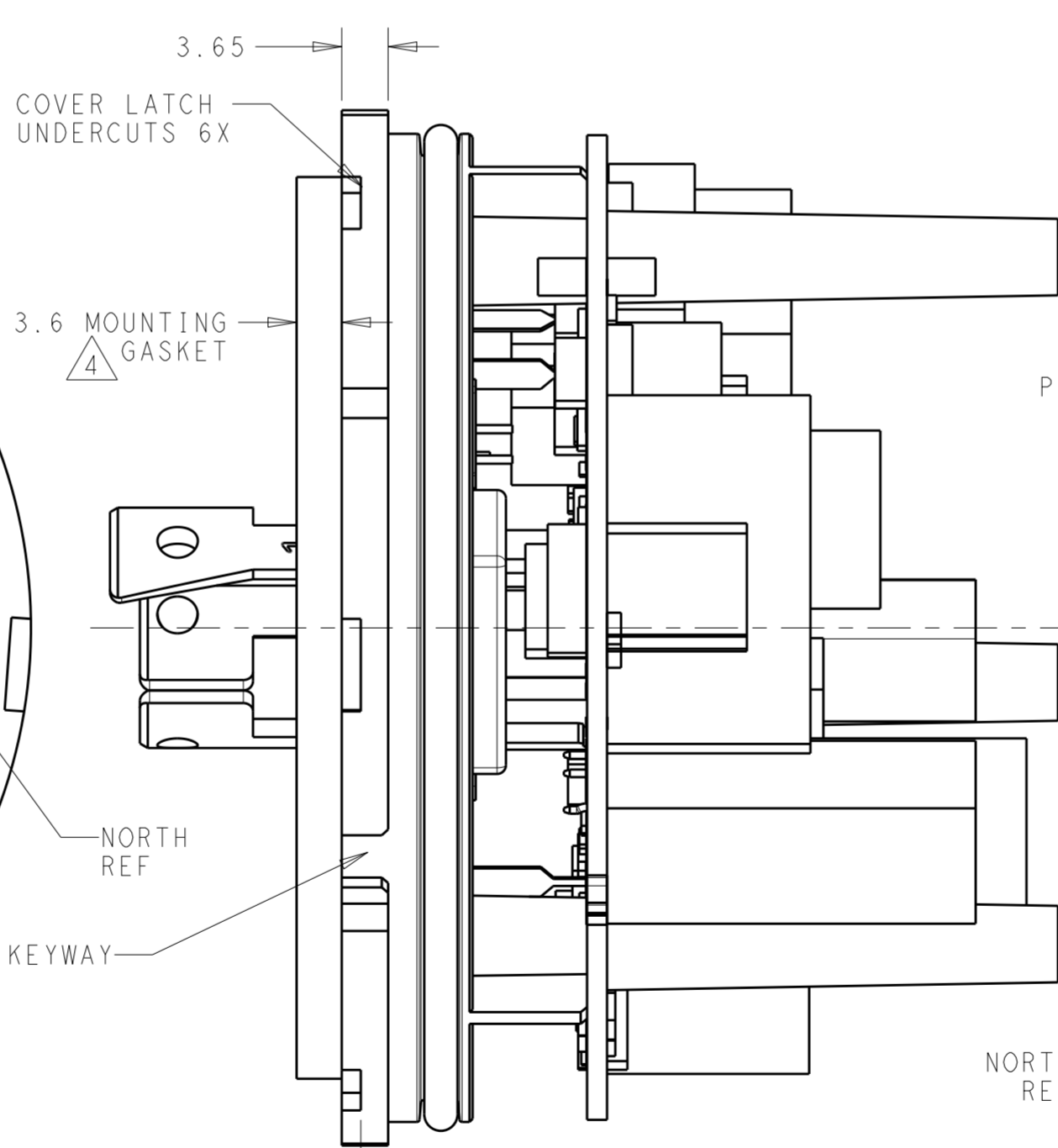
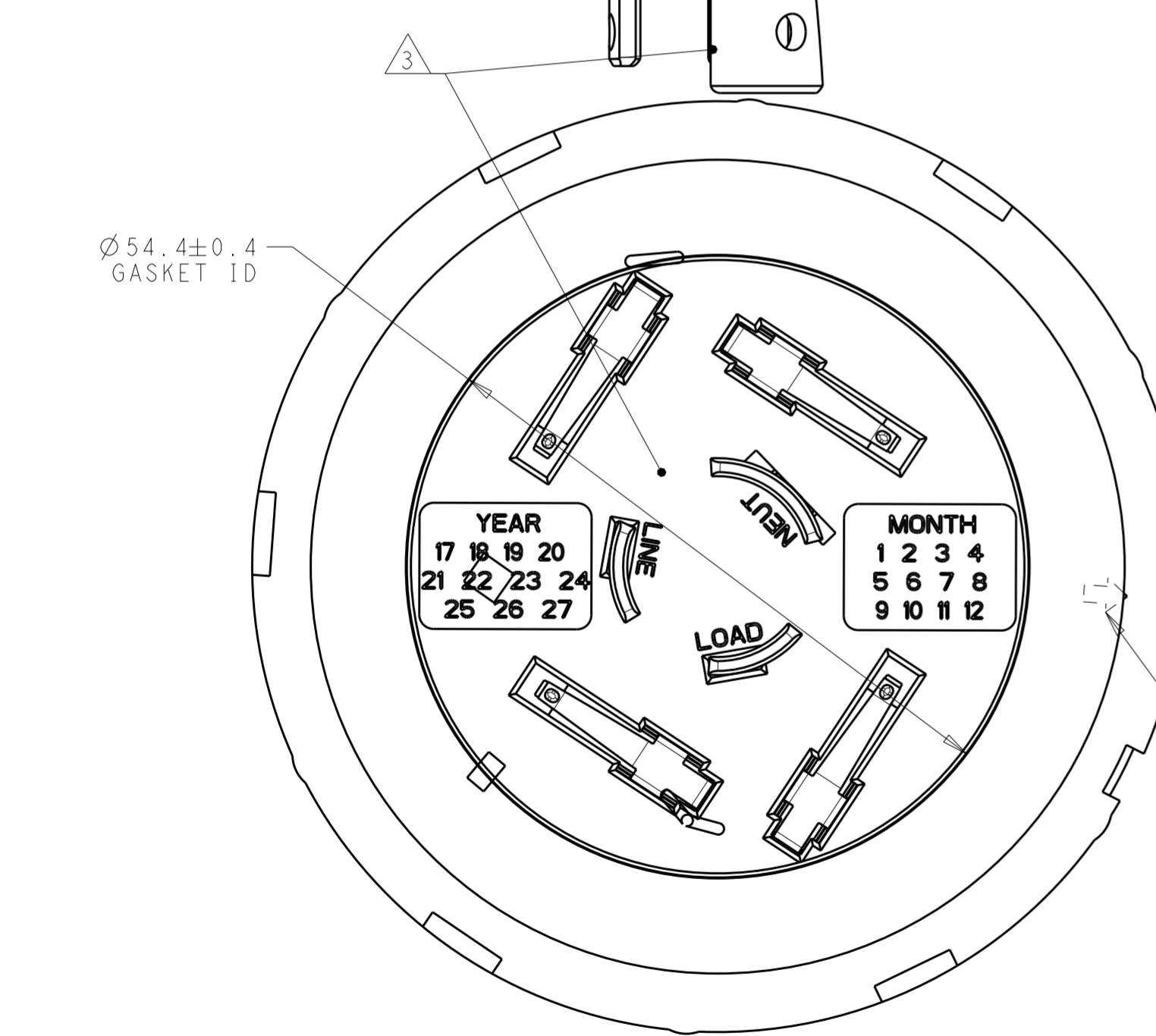
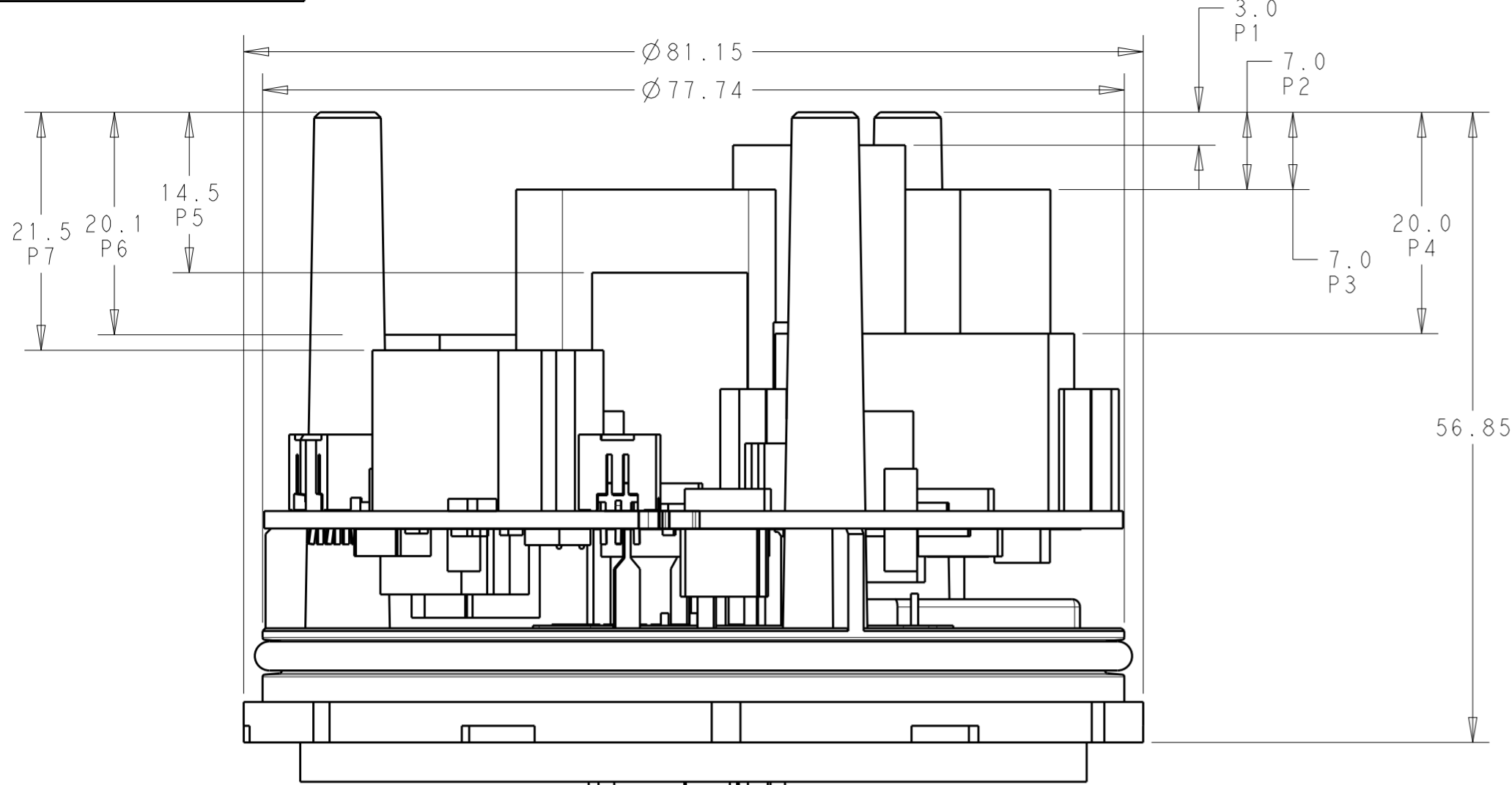
PRODUCT SPEC: 108-133085  
APPLICATION SPEC: 114-133085

SIZE: A2 CAGE CODE: 00779 DRAWING NO: C-2314786 RESTRICTED TO: -

MATERIAL: - FINISH: -

CUSTOMER DRAWING SCALE: 2:1 SHEET: 1 OF 4 REV: A

P	LTR	DESCRIPTION	DATE	DWN	APVD
-	-	SEE SHEET 1	-	-	-



THIS DRAWING IS A CONTROLLED DOCUMENT.		DWN C. DAILY 30DEC2016	TE Connectivity	
		CHK C. GINGRICH 30DEC2016		
DIMENSIONS:		PRODUCT SPEC		NAME
mm		108-133085		ASSEMBLY, LUMAWISE ENDURANCE N ENHANCED BASE
TOLERANCES UNLESS OTHERWISE SPECIFIED:		APPLICATION SPEC		SIZE
0 PLC ±		114-133085		A200779
1 PLC ±0.35		WEIGHT		CAGE CODE
2 PLC ±0.25		CUSTOMER DRAWING		G-2314786
3 PLC ±		SCALE		DRAWING NO
4 PLC ±		2:1		RESTRICTED TO
ANGLES ±3°		SHEET		2 OF 4
FINISH		REV		A

P	LTR	DESCRIPTION	DATE	DWN	APVD
-	-	SEE SHEET 1	-	-	-

2.5 MAX  
AT LOCATION P1

21.3 MAX  
TO FIT UNDER TE COVER  
PN: 2306130-X

TALLEST COMPONENT  
P5 THIS QUADRANT

Ø 3.40  
3X

22.2°  
REF

TALLEST  
COMPONENT  
P5 THIS  
QUADRANT

120°  
3X

Ø 70.00  
MAX

OPTIONAL FLAT TO  
INDICATE NORTH

4.2°  
REF

TALLEST COMPONENT  
P1 THIS QUADRANT

TALLEST COMPONENT  
P3 THIS QUADRANT

Ø 63.00


Ø 6.0  
KEEP OUT  
TOWER MOUNTING  
3 PLACES

TOP SIDE

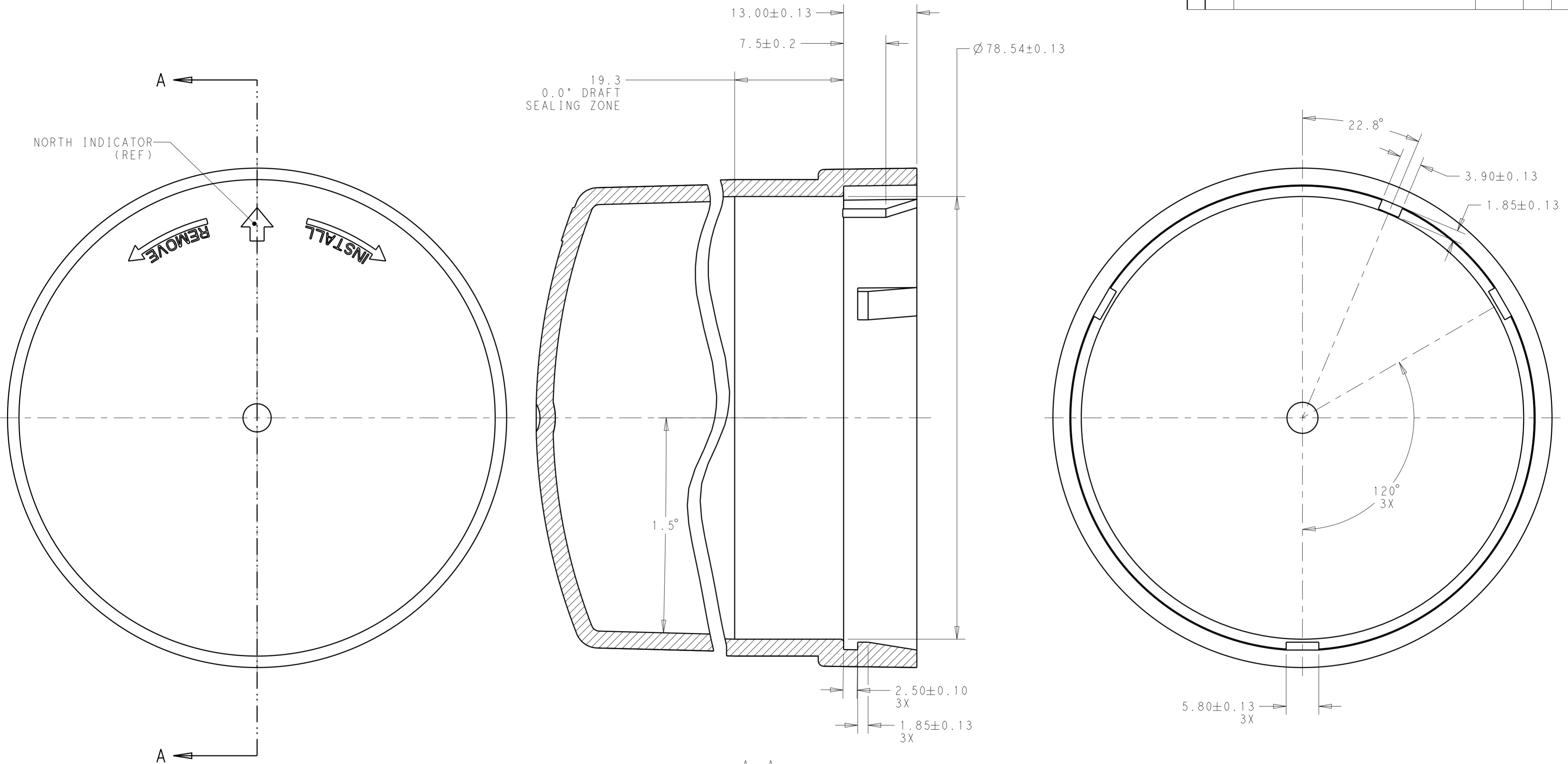
67  
REF

RECOMMENDED CUSTOMER PCB  
SCALE 3:1

1.60

THIS DRAWING IS A CONTROLLED DOCUMENT.		DWN C. DAILY 30DEC2016	 TE Connectivity	
		CHK C. GINGRICH 30DEC2016		
DIMENSIONS: mm		APVD		NAME ASSEMBLY, LUMAWISE ENDURANCE N ENHANCED BASE
TOLERANCES UNLESS OTHERWISE SPECIFIED: 0 PLC ± 1 PLC ±0.35 2 PLC ±0.25 3 PLC ± 4 PLC ± ANGLES ±3° FINISH		PRODUCT SPEC 108-133085		SIZE A200779
MATERIAL		APPLICATION SPEC 114-133085		DRAWING NO C-2314786
		WEIGHT		RESTRICTED TO
		CUSTOMER DRAWING		SCALE 2:1 SHEET 3 OF 4 REV A

P	LTR	DESCRIPTION	DATE	DWN	APVD
-		SEE SHEET 1	-	-	-



SECTION A-A

MATING COVER DIMENSIONS FOR 81MM DIAMETER BASES (2306130-X REF)

THIS DRAWING IS A CONTROLLED DOCUMENT.		DWN C. DAILY 30DEC2016	TE Connectivity
		CHK C. GINGRICH 30DEC2016	
DIMENSIONS: mm 		APVD	NAME ASSEMBLY, LUMAWISE ENDURANCE N ENHANCED BASE
TOLERANCES UNLESS OTHERWISE SPECIFIED: 0 PLC ± 1 PLC ±0.35 2 PLC ±0.25 3 PLC ± 4 PLC ± ANGLES ±3° FINISH -		PRODUCT SPEC 108-133085	SIZE A200779
MATERIAL		APPLICATION SPEC 114-133085	DRAWING NO C-2314786
		WEIGHT	RESTRICTED TO
		CUSTOMER DRAWING	SCALE 2:1 SHEET 4 OF 4 REV A