

THE INFORMATION CONTAINED IN THIS DRAWING IS THE SOLE PROPERTY OF AMPHENOL INTERCONNECT PRODUCTS CORP. ANY REPRODUCTION OR DISCLOSURE, TO THIRD PARTIES, IN PART OR WHOLE, WITHOUT THE EXPRESS WRITTEN PERMISSION OF AMPHENOL INTERCONNECT PRODUCTS CORP. IS PROHIBITED.

REVISIONS			
REV.	DESCRIPTION	DATE	APPROVED
F	REVISED & REDRAWN PER ECN 309751	06/19	DEC

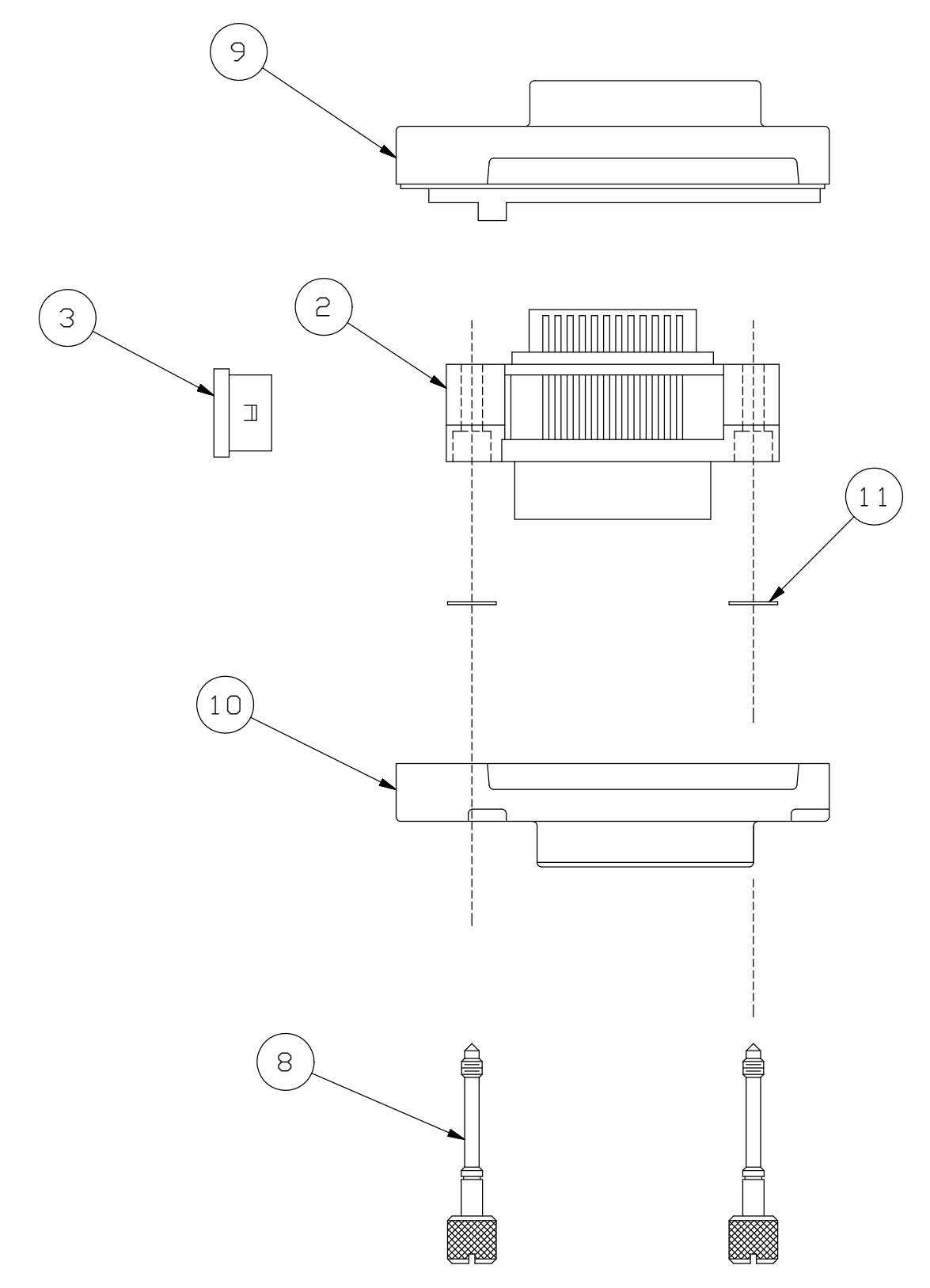
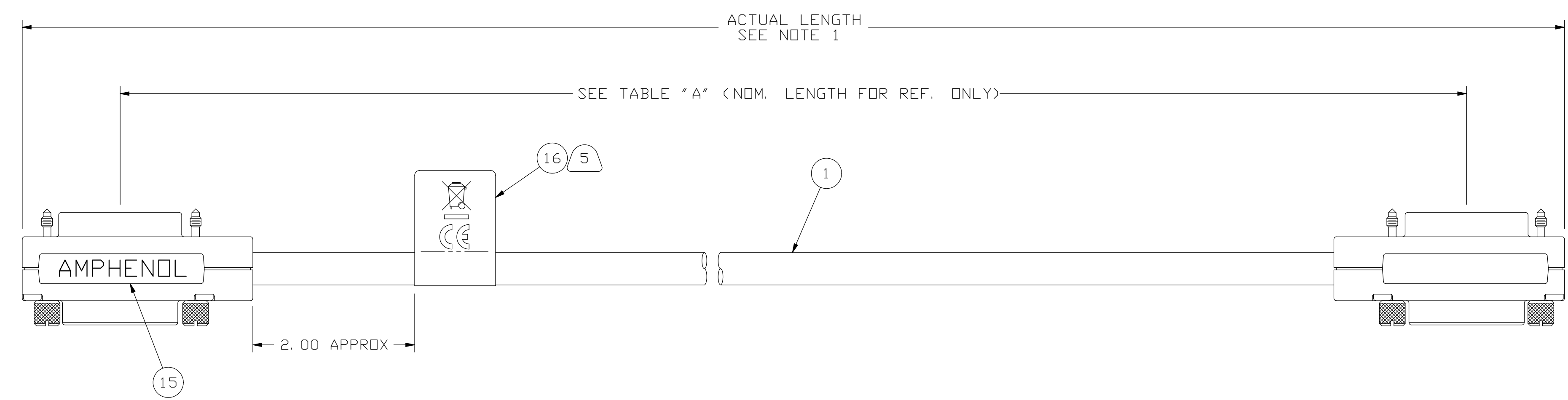


TABLE A

AMPHENOL P/N	AMPH. ACD P/N	NOM. LENGTH	ACTUAL LENGTH
56020XX01	GP-IE515546DS-000.3	.3 METER	.4 METER +.10/-.05
56020XX02	GP-IE515546DS-000.5	.5 METER	.6 METER +.10/-.05
56020XX03	GP-IE515546DS-001	1 METER	1.1 METER +.15/-.05
56020XX04	GP-IE515546DS-002	2 METER	2.1 METER +.15/-.05
56020XX05	GP-IE515546DS-002.5	2.5 METER	2.6 METER +.15/-.05
56020XX06	GP-IE515546DS-003	3 METER	3.1 METER +.15/-.05
56020XX07	GP-IE515546DS-004	4 METER	4.1 METER +.15/-.05
56020XX08	GP-IE515546DS-005	5 METER	5.1 METER +.15/-.05
56020XX09	GP-IE515546DS-006	6 METER	6.1 METER +.15/-.05
56020XX10	GP-IE515546DS-008	8 METER	8.1 METER +.15/-.05
56020XX11	GP-IE515546DS-010	10 METER	10.1 METER +.20/-.05
56020XX12	GP-IE515546DS-012	12 METER	12.1 METER +.20/-.05
56020XX13	GP-IE515546DS-015	15 METER	15.1 METER +.20/-.05
56020XX14	GP-IE515546DS-018	18 METER	18.1 METER +.20/-.05

WIRE RUN LIST

PIN ASSIGNMENTS (TYP. ALL CONNECTORS)			
PIN NUMBER	WIRE COLOR	PIN NUMBER	WIRE COLOR
1	WHT/BRN *	13	WHT/GRN *
2	WHT/RED *	14	WHT/BLU *
3	WHT/DRN *	15	WHT/GRAY *
4	WHT/YEL *	16	WHITE *
5	BLACK	17	VIOLET
6	BROWN	18	WHT/BRN
7	RED	19	WHT/RED
8	ORANGE	20	WHT/DRN
9	YELLOW	21	WHT/YEL
10	GREEN	22	WHT/GRN
11	BLUE	23	WHT/BLU
12	OUTER DRAIN	24	WHT/BLK
		24	WHT/VIO
		24	INNER DRAIN

* = INNER CORE COLORS

- SIMILAR TO AMPHENOL DRAWING 51554XXXX.
- APPLY BUBBLE WRAP OVER EACH END ON EACH ASSEMBLY.
- ALL MATERIALS USED IN THE MANUFACTURE OF THIS ASSEMBLY SHALL COMPLY WITH AMPHENOL REGULATED MATERIALS SPECIFICATION CS-1152.
- EACH ASSEMBLY IS TO BE PACKAGED IN PINK ANTI-STATIC PLASTIC BAG MATERIAL.
- PERMANENTLY MARK LABEL WITH 'WEEE' LOGO AND 'CE' LOGO, REF AHSI SPEC CS-1210. A ROHS2 CERTIFICATE OF COMPLIANCE MUST BE INCLUDED IN EACH SHIPPING CARTON.
- MAXIMUM ALLOWABLE ROTATION OF STRAIN RELIEF IN ASSEMBLY SHALL BE 15 DEGREES.
- CRIMP IN CRIMP RING IS TO MATE WITH ANTI-ROTATION PROTRUSION OF HOUSING HALVES.
- ASSEMBLY TESTING:
 - EACH CABLE SHALL BE TESTED TO ENSURE THAT THERE ARE NO DISCONTINUITIES AND NO SHORTS EXIST.
 - NO SHORT SHALL EXIST BETWEEN ADJACENT PINS. (I.E. 1 & 2, 2 & 3 ...)
 - A "SHORT" IS DEFINED AS A RESISTANCE OF LESS THAN 20 MEGADHMS.
 - A DISCONTINUITY IS DEFINED AS A RESISTANCE AS A RESISTANCE OF 2 OHMS OR GREATER.
- THIS DIMENSION TABULATED UNDER 'ACTUAL LENGTH' IN TABLE A.

SPECIFICATION CONTROL DRAWING

UNLESS OTHERWISE SPECIFIED DIMENSIONS ARE IN INCHES TOLERANCES ARE: DECIMALS .X ±.X .XX ±.01 .XXX ±.005 ANGLES ±.5° THIRD ANGLE PROJECTION	EAR NO.	Amphenol Interconnect Products Corp. 20 Valley St. Endicott, NY, 13760	
	APPROVALS	DATE	CABLE ASSEMBLY, ROUND, 24 POSITION IEEE NPLUG/RCPT, DIECAST ENCLOSURE, PREMIUM
	DRAWN D.CASHIMERE	09/06	
	CHECKED	RESP ENG	SIZE
MFG ENG		D	56020XXXX
CAD FILE: S:\SolidWorks\PE 5 DIGIT NO\56020		SCALE 1:1	SHEET 1 OF 1



NOTES: UNLESS OTHERWISE SPECIFIED