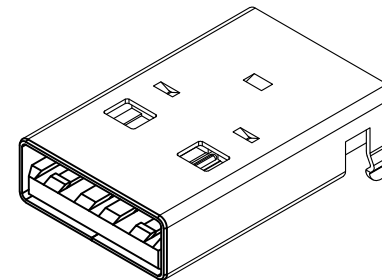


**Recommended PCB Layout**

As viewed from component side.  
Recommended PCB Thickness: 1.20mm  
General Tolerance: ±0.05

▨ Solder Area    □ Component Outline



**Specification**

**Material**

Plastic Housing: LCP, UL94V-0, Black  
Contact Terminal: Copper Alloy  
Metallic Shell: Steel

**Plating**

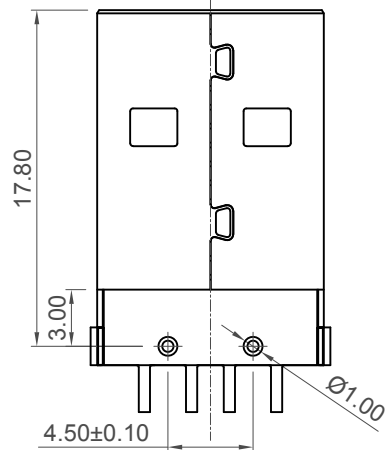
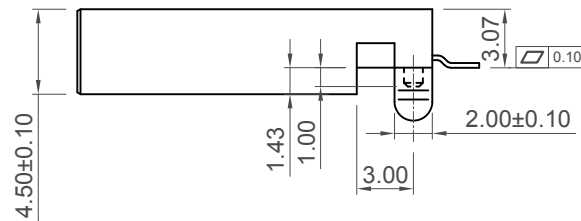
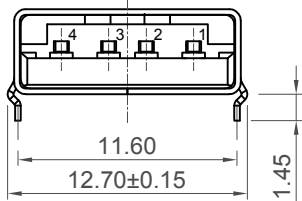
Underplating: 50µ" Nickel  
Plating:  
Contact Area: See ordering grid  
Solder Tails: 100µ" Tin  
Metallic Shell: Nickel

**Electrical**

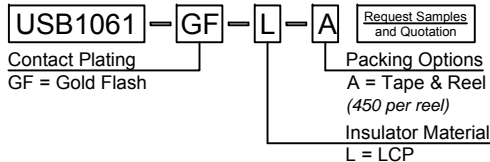
Voltage Rating: 30 V  
Current Rating: 3.0A  
Operating Temperature: -55°C to +85°C  
Contact Resistance: 30 mΩ max.  
Insulating Resistance: 1000 MΩ min.  
Dielectric Withstand Voltage: 500 V AC

**Mechanical & Environmental**

Mating Force: 35N (3.57Kgf) max.  
Unmating Force: 10N (1.02Kgf) min.  
Durability: 5,000 Cycles



**Ordering Grid**



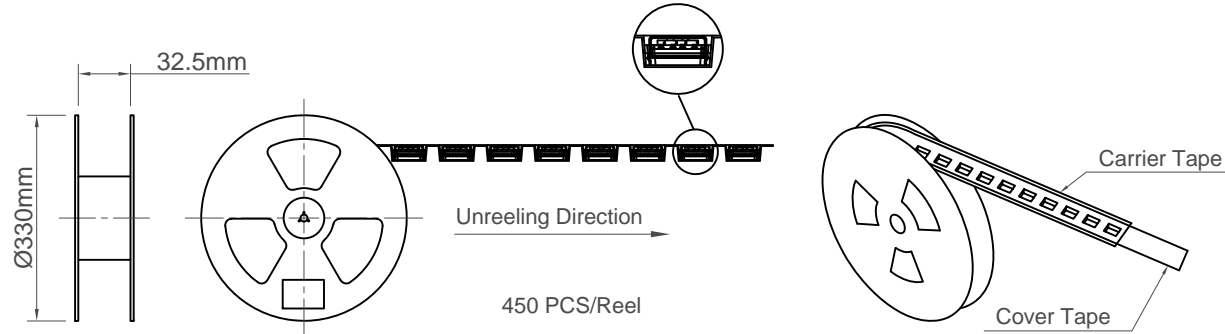
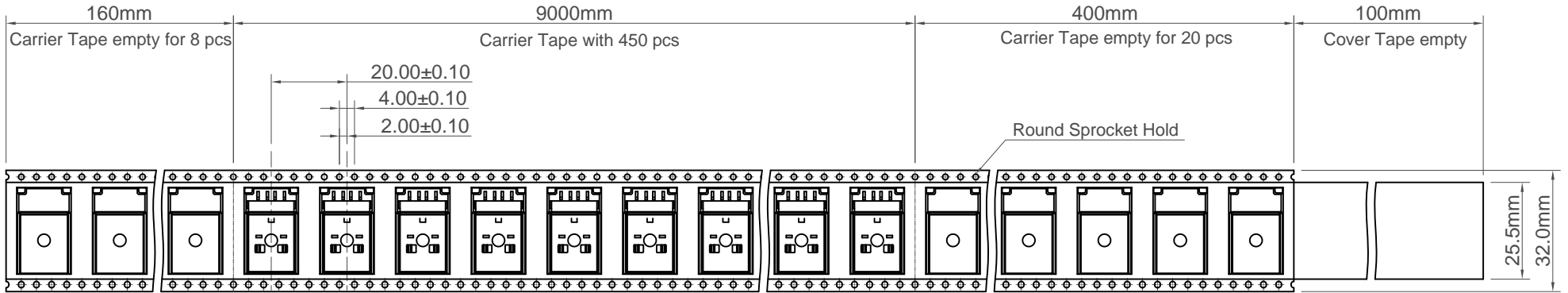
Part Number		Product Description	
USB1061		USB Plug, Type A, 4 Pin, Mid-Mount, Offset 1.43mm, SMT, Horizontal, Top Mount, Plastic Peg & Kinked Shell Stakes	
Drawing Date		2nd December 2014	
By	CC	Tolerances (Except as Noted)	Units:
Detail	Drawing Release	Length	Metric (mm)
Revision	A1	X.X ± 0.35	
Date	11/03/21	X.XX ± 0.25	
		Angle	3rd Angle Projection



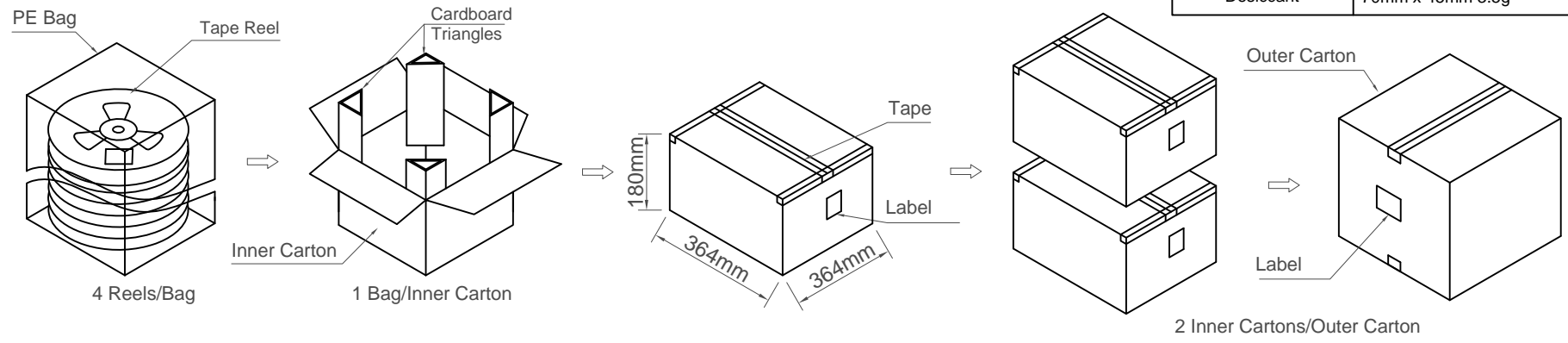
This drawing is confidential and copyright of Global Connector Technology, Ltd (GCT). This drawing must not be copied or disclosed without written consent. E & OE



Not to Scale	Drawn By AJO	Sheet No. 1/2
--------------	--------------	---------------



Name	Specification	Q'ty
Carrier Tape	32.0mm x 9.56m	8
Cover Tape	25.5mm x 200m	9.66m
Tape Reel	Ø330mm x 32.5mm	8
PE Bag	400mm x 400mm x 400mm	2
Cardboard Triangle	430mm x 150mm x 3mm	4
Inner Carton	364mm x 364mm x 180mm	2
Outer Carton	386mm x 383mm x 400mm	1
Desiccant	70mm x 45mm 3.5g	4



Product Part No.	PCS/Reel	Reels/Carton	PCS/Carton
USB1061	450	8	3600

Part Number USB1061		Product Description USB Plug, Type A, 4 Pin, Mid-Mount, Offset 1.43mm, SMT, Horizontal, Top Mount, Plastic Peg & Kinked Shell Stakes	
Drawing Date 2nd December 2014			
By CC	Detail Drawing Release	Tolerances (Except as Noted) Length	Units: Metric (mm)
Revision A1	Date 11/03/21	Angle	RoHS COMPLIANT 2011/65/EU Deca-SIDE
		This drawing is confidential and copyright of Global Connector Technology, Ltd (GCT). This drawing must not be copied or disclosed without written consent. E & OE	



Not to Scale	Drawn By AJO	Sheet No. 2/2
--------------	-----------------	------------------

H  
G  
F  
E  
D  
C  
B  
A

1 2 3 4 5 6 7 8