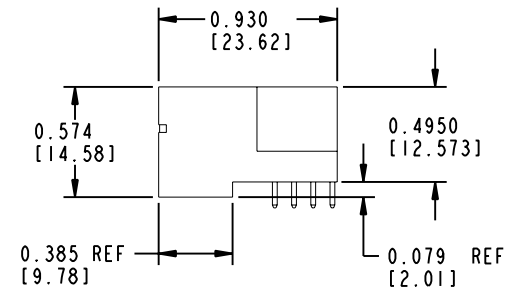
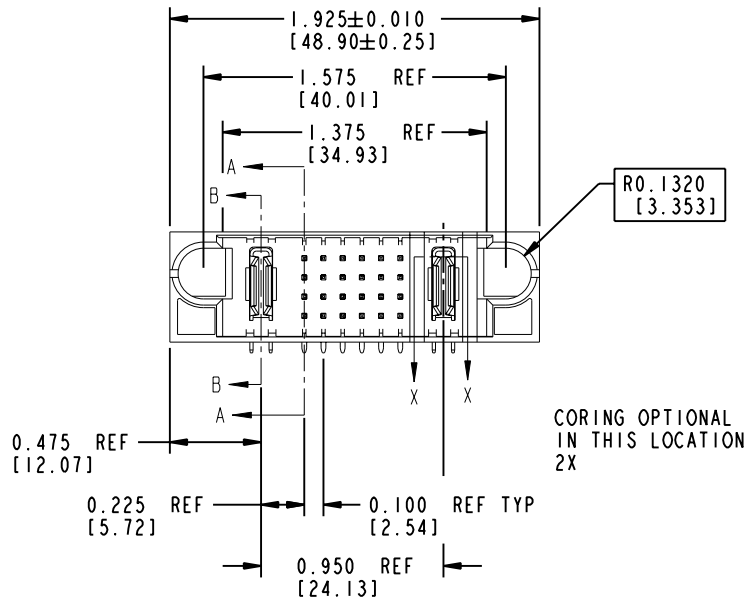
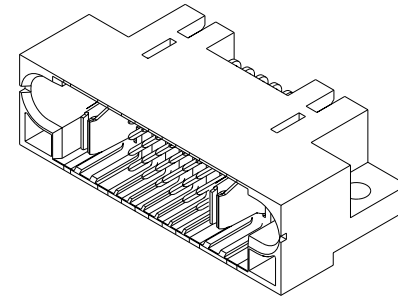
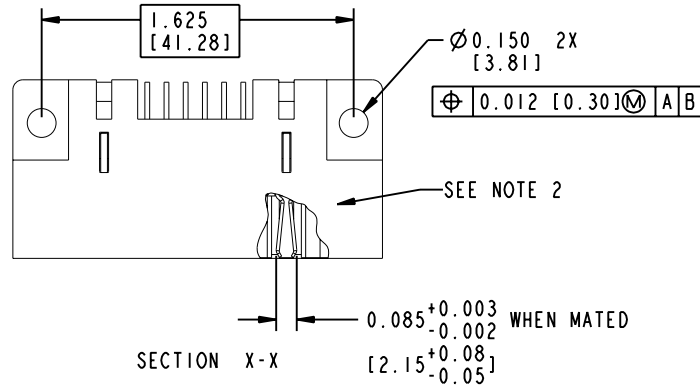


Tous droits strictement réservés. Reproduction ou communication o des tiers interdite sous quelque forme que ce soit sans autorisation écrite du propriétaire. Propriete de c FCI. Droits de reproduction FCI.

All rights strictly reserved. Reproduction or issue to third parties in any form, whenever is not permitted without written authority from the proprietor. Property of FCI. Copyright FCI.

PRODUCT NUMBER
SEE SHEET 3



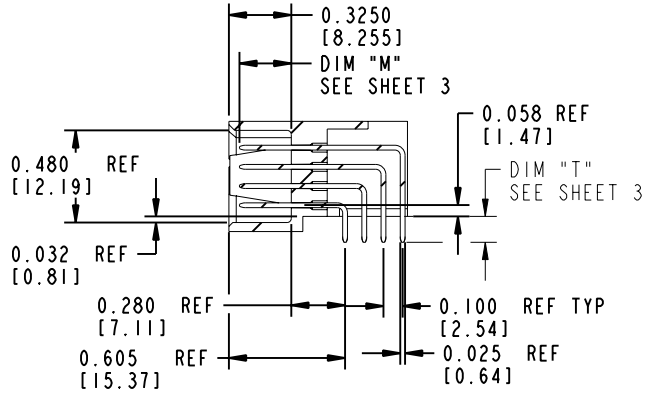
mat'l code SEE NOTE 1				tolerances unless otherwise specified				CUSTOMER COPY		FCI ELECTRONICS www.fciconnect.com	
ltr	ecn no.	dr	date	linear	.XX±.01/.X±.3		projection 	title IP + 24S + IP RIGHT ANGLE SOLDER HEADER			
K	DG05-0064	SW	3/30/05		.XXX±.005/.X±.13			INCH / MM scale 1:1	product family PWRBLADE		code 213
L	DG05-0435	SW	11/03/05	angles	.XXX±.0020/.XXX±.051		size A		dwg no 51415		
				dr	C. BAROT	01-12-99			1 OF 5		
				enr	J. BROWN	01-12-99					
				chr	J. BROWN	01-12-99					
				appd	J. BROWN	01-12-99					
sheet index	revision sheet	L	L	L	L	L					
		1	2	3	4	5					

THIS FILE WAS ORIGINALLY CREATED IN THE PRO ENGINEER ENVIRONMENT AND ANY FUTURE REVISIONS TO THIS FILE MUST BE MADE IN THE PRO ENGINEER ENVIRONMENT

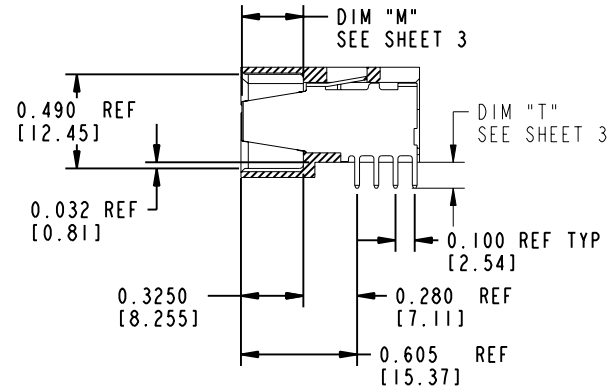
Tous droits strictement réservés. Reproduction ou communication o des tiers interdite sous quelque forme que ce soit sans autorisation écrite du propriétaire. Propriété de c FCI. Droits de reproduction FCI.

All rights strictly reserved. Reproduction or issue to third parties in any form whatever is not permitted without written authority from the proprietor. Property of FCI. Copyright FCI.

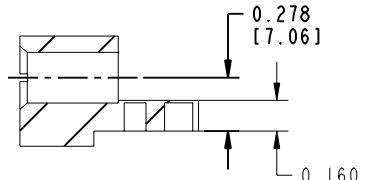
PRODUCT NUMBER
SEE SHEET 3



SECTION A-A
SCALE 1:1



SECTION B-B
SCALE 1:1



SECTION I-I

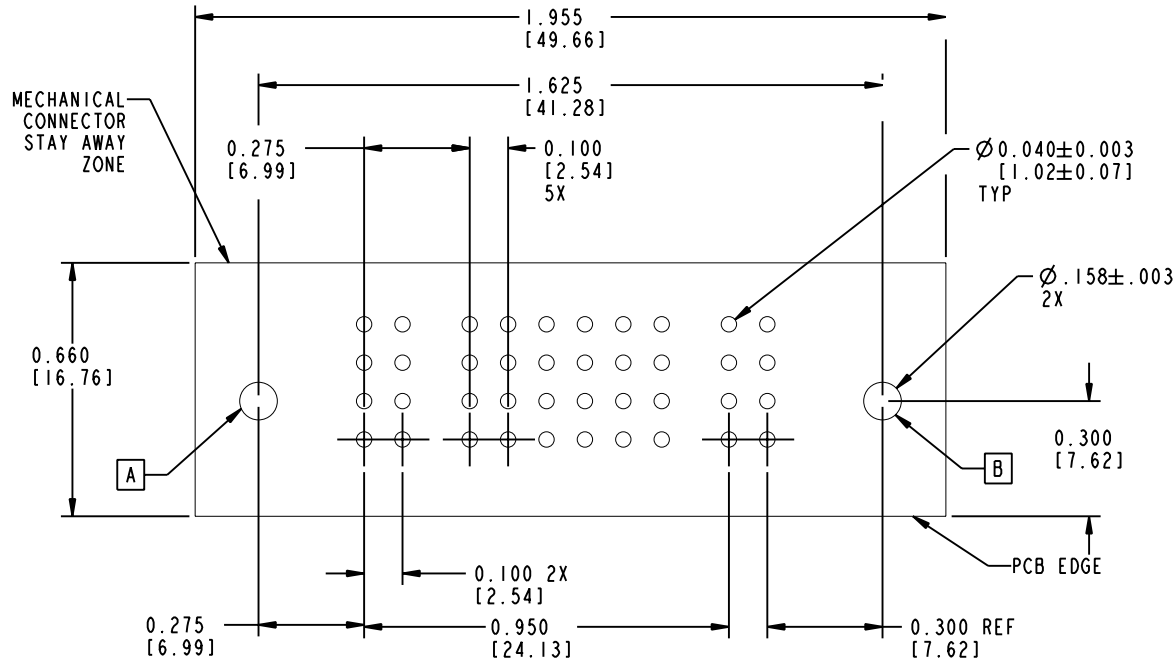
mat'l code				tolerances unless otherwise specified		CUSTOMER COPY		FCI ELECTRONICS www.fciconnect.com	
ltr	ecn no.	dr	date	linear	.XX±.01/.X±.3	projection		title	
L					.XXX±.005/.X±.13			IP + 24S + IP	
				angles	XXX±.0020/.XXX±.05	INCH / MM		product family	
				0°±2°				PWRBLADE	code
		dr	C. BAROT	01-12-99		scale 1:1	A	size	dwg no
		enr	J. BROWN	01-12-99				51415	213
		chr	J. BROWN	01-12-99					
		appd	J. BROWN	01-12-99					
sheet index	revision sheet							cage code	22526

Tous droits strictement réservés. Reproduction ou communication a des tiers interdite sous quelque forme que ce soit sans autorisation écrite du propriétaire. Propriété de c FCI. Droits de reproduction FCI.



All rights strictly reserved. Reproduction or issue to third parties in any form whatever is not permitted without written authority from the proprietor. Property of FCI. Copyright FCI.

PRODUCT NUMBER
51415-00X--
 NOTE ③



SCALE 2:1

RECOMMENDED PCB LAYOUT

THIS FILE WAS ORIGINALLY CREATED IN THE PRO ENGINEER ENVIRONMENT AND ANY FUTURE REVISIONS TO THIS FILE MUST BE MADE IN THE PRO ENGINEER ENVIRONMENT

mat'l code		SEE NOTES		tolerances unless otherwise specified		CUSTOMER		ELECTRONICS www.fciconnect.com	
ltr	ecn no.	dr	date	linear	.XX±.01/.X±.3		COPY		title IP + 24S + IP RIGHT ANGLE SOLDER HEADER
L					.XXX±.005/.XX±.13		projection		
					.XXX±.002/.XXX±.051				
				angles	0°±2°		INCH/MM		product family
				dr	C. BAROT	01-12-99	scale		PWRBLADE
				enr	J. BROWN	01-12-99	size		code
				chr	J. BROWN	01-12-99	dwg no		213
				appd	J. BROWN	01-12-99	A		sheet
sheet index		revision sheet						4	

Tous droits strictement réservés. Reproduction ou communication a des tiers interdite sous quelque forme que ce soit sans autorisation écrite du propriétaire. Propriété de c FCI. Droits de reproduction FCI.



All rights strictly reserved. Reproduction or issue to third parties in any form, whenever is not permitted without written authority from the proprietor. Property of FCI. Copyright FCI.

PRODUCT NUMBER

51415-00X--
NOTE ③

NOTES:

1. DIMENSIONS AND TOLERANCES ARE IN ACCORDANCE WITH ASME Y14.5M, 1994 UNLESS OTHERWISE SPECIFIED.

CONNECTOR NOTES:

2. HOUSING MATERIAL: UL 94 V-0 GLASS FILLED HIGH-TEMP THERMOPLASTIC
POWER CONTACT MATERIAL: COPPER ALLOY
SIGNAL PIN MATERIAL: COPPER ALLOY

3. PLATING(51415-00X STAND FOR 51415-001 , 51415-002 AND 51415-003)
51415-00X Singal Pin:30u"/0.76um Au OVER 50u"/1.27um Ni ON THE CONTACT AREA.
AND 100u"/2.54um SnPb PLATING OVER 50u"/1.27um Ni ON THE TERMINATION SECTION.
Power Pin:30u"/0.76um Au OVER 50u"/1.27um Ni ON THE CONTACT AREA,
AND 100u"/2.54um SnPb PLATING OVER 50u"/1.27um Ni ON THE TERMINATION SECTION.

51415-00XLF Singal Pin:30u"/0.76um Au OVER 50u"/1.27um Ni ON THE CONTACT AREA.
AND 78u"/2.00um Sn PLATING OVER 50u"/1.27um Ni ON THE TERMINATION SECTION.
Power Pin:30u"/0.76um Au OVER 50u"/1.27um Ni ON THE CONTACT AREA,
AND 78u"/2.00um Sn PLATING OVER 50u"/1.27um Ni ON THE TERMINATION SECTION.

PART NUMBER 51415-00XLF MEETS EUROPEAN UNION DIRECTIVE AND OTHER COUNTRY REGULATIONS AS DESCRIBED IN GS-22-008.

THE HOUSING WILL WITHSTAND EXPOSURE TO 260° PEAK TEMPERATURE FOR 10 SECONDS IN A WAVE SOLDER APPLICATION WITH A CIRCUIT BOARD.

4. MANUFACTURER'S NAME, P/N, AND DATE CODE TO APPEAR ON THIS SURFACE.
5. PRODUCT SPECIFICATION GS-12-149.
APPLICATION SPECIFICATION BUS-20-067.

PCB NOTES:

6. ALL HOLE DIAMETERS ARE FINISHED HOLE SIZE.
7. MOUNTING HOLES, WHERE APPLICABLE, ARE UNPLATED.
8. Ø .0453±0.0010 [1.151±0.025] DRILLED HOLES PLATED WITH .0003 [0.008] MIN SnPb OVER .001 [0.03] TO .003 [0.08] Cu PLATING TO ACHIEVE Ø .040±.003 [1.02±.07] HOLE.
9. "DIM XXX" TO BE DETERMINED BY THE CUSTOMER.
10. CONNECTOR KEEP-OUT ZONE.

THIS FILE WAS ORIGINALLY CREATED IN THE PRO ENGINEER ENVIRONMENT AND ANY FUTURE REVISIONS TO THIS FILE MUST BE MADE IN THE PRO ENGINEER ENVIRONMENT

mat'l code		SEE NOTES		tolerances unless otherwise specified		CUSTOMER		ELECTRONICS www.fciconnect.com	
ltr	ecn no.	dr	date	line dr	.XX±.01/.X±.3	COPY		title	
L					.XXX±.005/.XX±.13	projection		IP + 24S + IP	
				angles	.XXX±.002/.XXX±.051			RIGHT ANGLE SOLDER HEADER	
				dr	0°±2°	INCH/MM		product family	
				eng	C. BAROT 01-12-99	scale		PWRBLADE	
				chr	J. BROWN 01-12-99	1:1		code	
				app	J. BROWN 01-12-99	A		213	
sheet	revision							size	
index	sheet							51415	
								sheet	
								5	