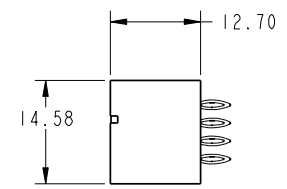
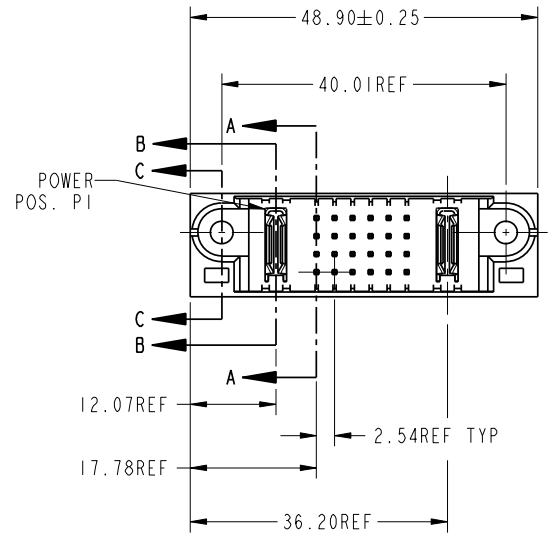
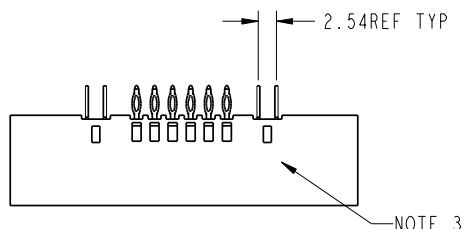


Tous droits strictement reserves. Reproduction ou communication a des tiers interdite sous quelque forme que ce soit sans autorisation écrite du propriétaire. Propriete de c FCI. Droits de reproduction FCI.



All rights strictly reserved. Reproduction or issue to third parties in any form whatever is not permitted without written authority from the proprietor. Property of FCI. Copyright FCI.

PRODUCT No.	ROWS	POWER		SIGNAL						POWER	
		E1	P1	1	2	3	4	5	6	P2	E2
51952-002-- NOTE: 3	D C B A		PC	G	G	G	G	G	G	PC	



CODE	DIM "M" ±.010 [0.25]	CONTACT TYPE
G	[6.86]	SIGNAL
K	[5.59]	SIGNAL
PC	[N/A]	POWER

mat'l code				SEE NOTE		tolerances unless otherwise specified		CUSTOMER	
lir	ecn no.	dr	date	linear	0.X ±0.3	COPY		FCI	
A	V12513	DAI	10/31/01	linear	0.XX ±0.13	projection		www.fciconnect.com	
B	V21104	TBA	10/01/02	angles	0.XXX ±0.051	MM		title	
C	DG05-0472	Ryan	11/17/05	dr	0° ±2°	scale		IP + 24S + IP	
D	DG07-0357	JULIA	09/10/07	enrg	J. WITMER 9/19/01	1:1		PRESS FIT VERTICAL HEADER	
				chr	J. ALLISON 9/19/01			product family	
				appd	J. ALLISON 9/19/01			PwrBlade	
sheet index	revision	D	D					code	
	sheet	I	I					213	

product family	PwrBlade	code	213
size	dwg no	sheet	1 of 3
A	51952-002		

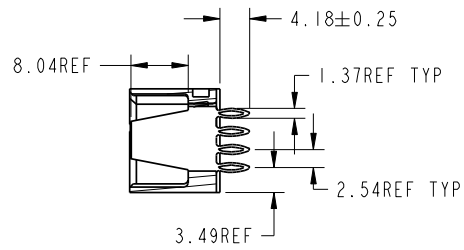
Pro/E	3	cage code	22526	4
-------	---	-----------	-------	---

Tous droits strictement reserves. Reproduction ou communication a des tiers interdite sous quelque forme que ce soit sans autorisation écrite du propriétaire. Propriete de c FCI. Droits de reproduction FCI.

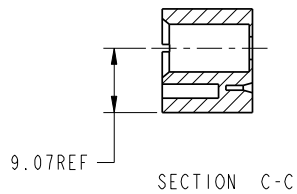


All rights strictly reserved. Reproduction or issue to third parties in any form whatever is not permitted without written authority from the proprietor. Property of FCI. Copyright FCI.

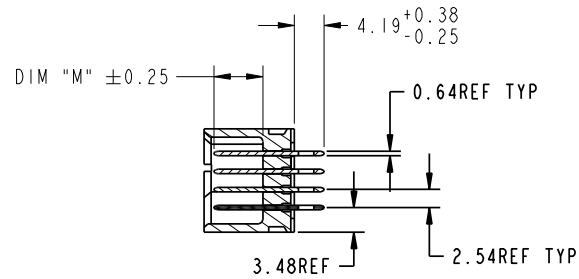
PRODUCT NUMBER
51952-002--
NOTE: 3



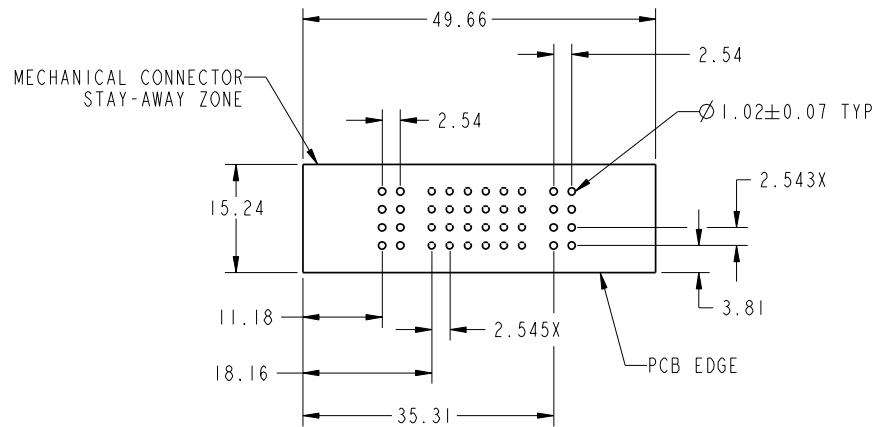
SECTION B-B



SECTION C-C



SECTION A-A



RECOMMENDED PCB LAYOUT

mat'l code				SEE NOTE		tolerances unless otherwise specified		CUSTOMER		www.fciconnect.com		
lfr	ecr no.	dr	date	linear	0.X ±0.3	projection		COPY		title		
D					0.XX ±0.13					IP + 24S + IP		
				angles	0.XXX ±0.051					PRESS FIT VERTICAL HEADER		
				dr	J. WITMER 9/19/01			product family		PwrBlade	code	
				enr	J. ALLISON 9/19/01	scale		size		dwg no	213	
				chr	J. ALLISON 9/19/01	1:1		A		51952-002	sheet	
				appd	J. ALLISON 9/19/01						2	
sheet index	revision sheet											

Pro/E 3 cage code 22526 4

Tous droits strictement reserves. Reproduction ou communication a des tiers interdite sous quelque forme que ce soit sans autorisation ecrite du proprietaire. Propriete de c FCI. Droits de reproduction FCI.



All rights strictly reserved. Reproduction or issue to third parties in any form whatever is not permitted without written authority from the proprietor. Property of FCI. Copyright FCI.

PRODUCT NUMBER
51952-002--
NOTE: 3

NOTES:

1. DIMENSIONS AND TOLERANCES ARE IN ACCORDANCE WITH ASME Y14.5M, 1994 UNLESS OTHERWISE SPECIFIED.

CONNECTOR NOTES:

- 2 HOUSING MATERIAL: UL 94 V-0 GLASS FILLED
HIGH-TEMP THERMOPLASTIC
POWER CONTACT MATERIAL: COPPER ALLOY
SIGNAL PIN MATERIAL: COPPER ALLOY
 - 3. PLATING:
51952-002 ,51952-002LF PLATING SPEC. WAS SHOWN IN THE PRINT OF 10064183.
 - 4 MANUFACTURER'S NAME, P/N, AND DATE CODE TO APPEAR ON THIS SURFACE.
 - 5. PRODUCT SPECIFICATION GS-12-149.
APPLICATION SPECIFICATION BUS-20-067.
 - 6. PACKAGED IN TRAYS.
- PCB NOTES:
- 7. ALL HOLE DIAMETERS ARE FINISHED HOLE SIZE.
 - 8. MOUNTING HOLES, WHERE APPLICABLE, ARE UNPLATED.
 - 9 $\varnothing 1.151 \pm 0.025$ DRILLED HOLES PLATED WITH
0.008 MIN SnPb OR Sn OVER .001 [0.03]
TO 0.08 Cu PLATING TO ACHIEVE
 $\varnothing 1.02 \pm .07$ HOLE.
 - 10 "DIM XXX" TO BE DETERMINED BY THE CUSTOMER.
 - 11 CONNECTOR KEEP-OUT ZONE.
 - 12. FOR PRESS FIT APPLICATION USE FCI CAM TOOL 430169-XXX.

mat'l code				SEE NOTE		tolerances unless otherwise specified		CUSTOMER		FCI www.fciconnect.com	
lfr	ecr no.	dr	date	linear	0.X ± 0.3	COPY		projection		title	
D					0.XX ± 0.13					1P + 24S + 1P PRESS FIT VERTICAL HEADER	
				angles	0° ± 2°					product family PwrBlade code 213	
				dr	J. WITMER 9/19/01			scale 1:1		size A	
				enrg	J. ALLISON 9/19/01					dwg no 51952-002 sheet 3	
				chr	J. ALLISON 9/19/01						
				appd	J. ALLISON 9/19/01						
sheet index		revision sheet									

cage code 22526

Pro/E