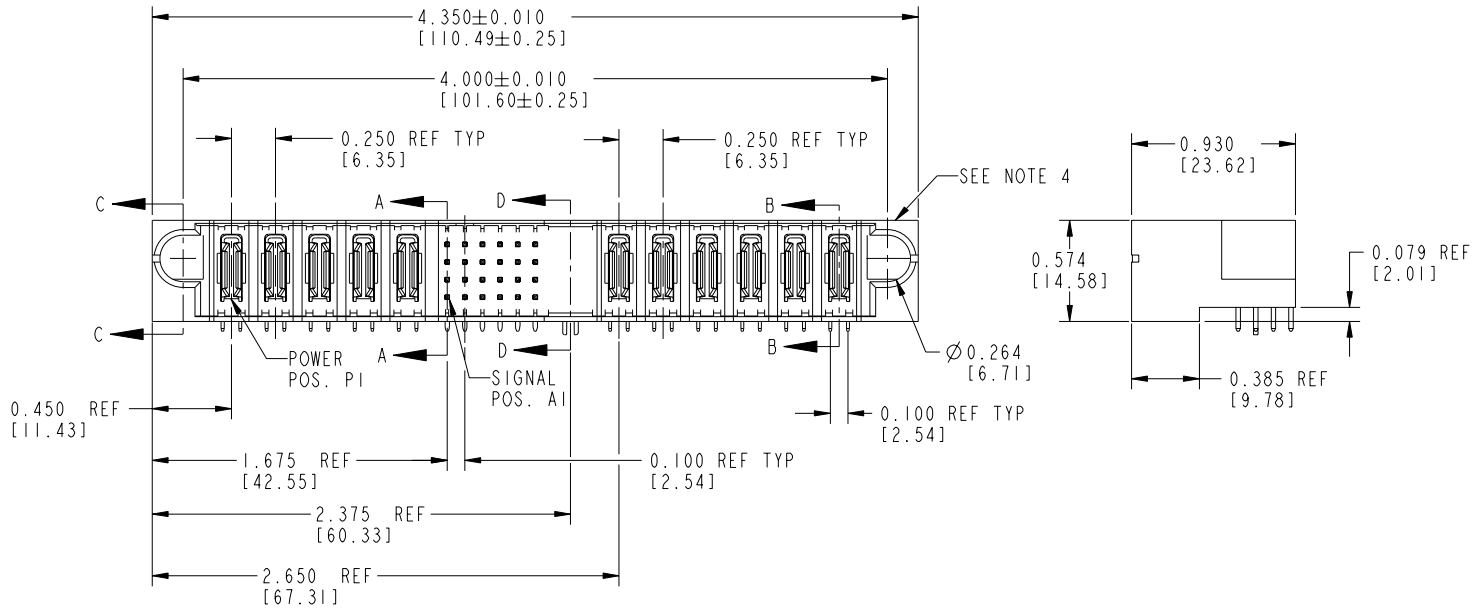


Tous droits strictement réservés. Reproduction ou communication a des tiers interdite sous quelque forme que ce soit sans autorisation écrite du propriétaire. Propriété de c FCI. Droits de reproduction FCI.

All rights strictly reserved. Reproduction or issue to third parties in any form whatever is not permitted without written authority from the proprietor. Property of FCI. Copyright FCI.

PRODUCT NUMBER
SEE SHEET 3



mat'l code				SEE NOTES		tolerances unless otherwise specified		CUSTOMER	
ltr	ecn no.	dr	date	linear	.XX±.01/.X±.3	COPY		FCI www.fciconnect.com	
M	DG05-0112	GuoJM	05/17/05		.XXX±.005/.X±.13	projection	title 5P+24S+1M+6P RIGHT ANGLE SOLDER HEADER		
N	DG05-0159	GuoJM	06/14/05		.XXX±.0020/.XXX±.051	INCMM MM		product family	PWRBLADE
P	DG05-0338	SW	09/19/05	angles	0°±2°	scale	1:1	size	dwg no
R	DG05-0397	CS	10/20/05	dr	D. WOLFORD 01-28-99	A		51624	code
S	DG05-0454	CS	11/11/05	enr	J. BROWN 01-28-99	sheet		213	1 of 4
				chr	J. BROWN 01-28-99	sheet			
				appd	J. BROWN 01-28-99	sheet			
sheet index	revision sheet	S	S	S		cage code		22526	4

Pro/E

PDM: Rev:S

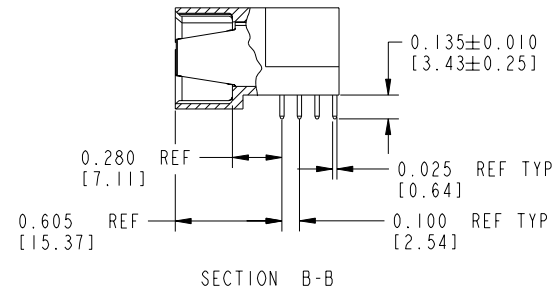
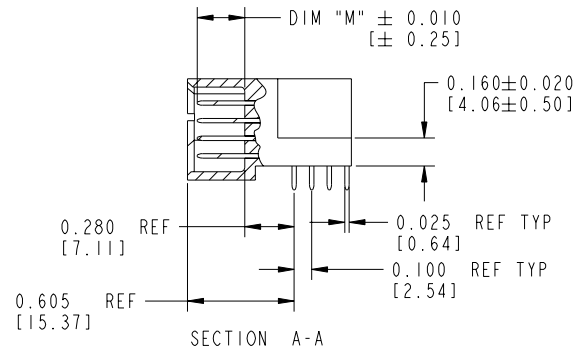
STATUS:Released

Printed: Feb 06, 2008

Tous droits strictement réservés. Reproduction ou communication a des tiers interdite sous quelque forme que ce soit sans autorisation écrite du propriétaire. Propriété de c FCI. Droits de reproduction FCI.

All rights strictly reserved. Reproduction or issue to third parties in any form whatever is not permitted without written authority from the proprietor. Property of FCI. Copyright FCI.

PRODUCT NUMBER
51624-00X_-
Note: ②



CONNECTOR NOTES:

- HOUSING MATERIAL: UL 94 V-0 GLASS FILLED HIGH TEMP THERMOPLASTIC
POWER CONTACT MATERIAL: COPPER ALLOY
SIGNAL CONTACT MATERIAL: COPPER ALLOY

2. PLATING:

51624 Singal Pin: 30u"/0.76um Au OVER 50u"/1.27um Ni ON THE CONTACT AREA,
AND 100u"/2.54um SnPb PLATING OVER 50u"/1.27um Ni ON THE TERMINATION SECTION.
Power Pin: 30u"/0.76um Au OVER 50u"/1.27um Ni ON THE CONTACT AREA,
AND 100u"/2.54um SnPb PLATING OVER 50u"/1.27um Ni ON THE TERMINATION SECTION.

51624LF Singal Pin: 30u"/0.76um Au OVER 50u"/1.27um Ni ON THE CONTACT AREA,
AND 78u"/2.00um Sn PLATING OVER 50u"/1.27um Ni ON THE TERMINATION SECTION.
Power Pin: 30u"/0.76um Au OVER 50u"/1.27um Ni ON THE CONTACT AREA,
AND 78u"/2.00um Sn PLATING OVER 50u"/1.27um Ni ON THE TERMINATION SECTION.

PART NUMBER 51624LF MEETS EUROPEAN UNION DIRECTIVE AND OTHER ICOUNTRY REGULATIONS AS DESCRIBED IN GS-22-008.

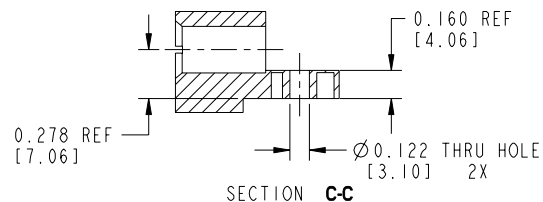
THE HOUSING WILL WITHSTAND EXPOSURE TO 260° PEAK TEMPERATURE FOR 10 SECONDS IN A WAVE SOLDER APPLICATION WITH A CIRCUIT BOARD.

3. PRODUCT SPECIFICATION GS-12-149

4. "MANUFACTURER" NAME, P/N, AND DATE CODE TO APPEAR ON THIS SURFACE

PCB NOTES:

- ALL DIMENSIONS ARE BASIC UNLESS OTHERWISE SPECIFIED.
- ALL THROUGH HOLES ARE LOCATED WITH A TRUE POSITION OF 0.004 [0.10]
- ALL HOLE DIAMETERS ARE FINISHED HOLE SIZE
- Ø 0.098 [2.49] AND Ø 0.126 [3.20] THROUGH HOLES ARE UNPLATED.
- Ø 0.0453 ± 0.0010 [1.151 ± 0.025] DRILLED HOLES PLATED WITH 0.0003 [0.008] MIN SnPb OVER 0.001 [0.03] TO 0.003 [0.08] Cu PLATING TO ACHIEVE A Ø 0.040 ± 0.003 [1.02 ± 0.07] HOLE.



mat'l code		SEE NOTES		tolerances unless otherwise specified		CUSTOMER	
lfr	ecn no.	dr	date	linear	.XX±.01/0.X±0.3	COPY	www.fciconnect.com
S				projection	.XXX±.005/0.XX±0.13		
				angles	.XXX±.0020/.XXX±.051		product family PWRBLADE
				dr	D. WOLFORD 01-28-99		code 213
				enrg	J. BROWN 01-28-99	size 1:1	sheet 2 of 4
				chr	J. BROWN 01-28-99	scale A	product family PWRBLADE
				appd	J. BROWN 01-28-99	size 51624	code 213
sheet index	revision sheet						sheet 2 of 4

Pro/E

cage code 22526

4

PDM: Rev:S

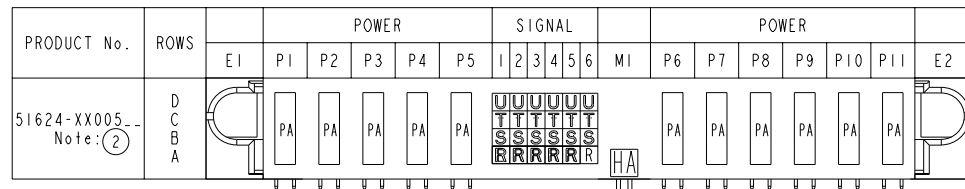
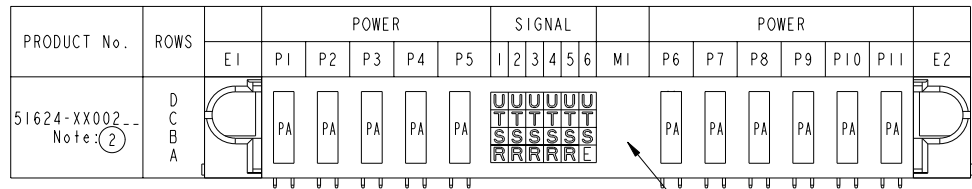
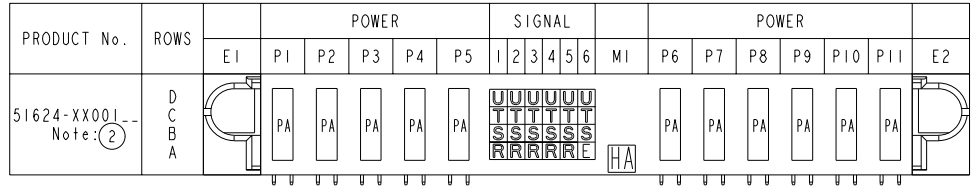
STATUS: Released

Printed: Feb 06, 2008

Tous droits strictement réservés. Reproduction ou communication a des tiers interdite sous quelque forme que ce soit sans autorisation écrite du propriétaire. Propriété de c FCI. Droits de reproduction FCI.

All rights strictly reserved. Reproduction or issue to third parties in any form whatever is not permitted without written authority from the proprietor. Property of FCI. Copyright FCI.

PRODUCT NUMBER
51624-00X---
NOTE: (2)



CODE	DIM "M" ±0.010 [0.25]		CONTACT TYPE
PA	N/A	[N/A]	POWER
R	0.270	[6.86]	SIGNAL
S	0.270	[6.86]	SIGNAL
T	0.270	[6.86]	SIGNAL
U	0.270	[6.86]	SIGNAL
E	0.220	[5.59]	SIGNAL
HA	N/A	[N/A]	HOLD-DOWN

mat'l code		SEE NOTES		tolerances unless otherwise specified		CUSTOMER		 www.fciconnect.com	
lfr	ecn no.	dr	date	linear	.XX±.01/0.X±0.3	COPY		title	
S				angles	.XXX±.005/0.XX±0.13	projection		5P+24S+1M+6P	
				dr	.XXX±.0020/.XXX±.051			RIGHT ANGLE SOLDER HEADER	
				enr	0°±2°			product family PWRBLADE code	
				chr	D. WOLFORD 01-28-99			size 213	
				appd	J. BROWN 01-28-99			sheet 3 of 4	
sheet index	revision sheet				J. BROWN 01-28-99	scale 1:1		product family PWRBLADE code size 51624 sheet 3 of 4	

cage code 22526 4

Pro/E

PDM: Rev:S

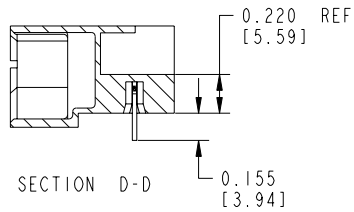
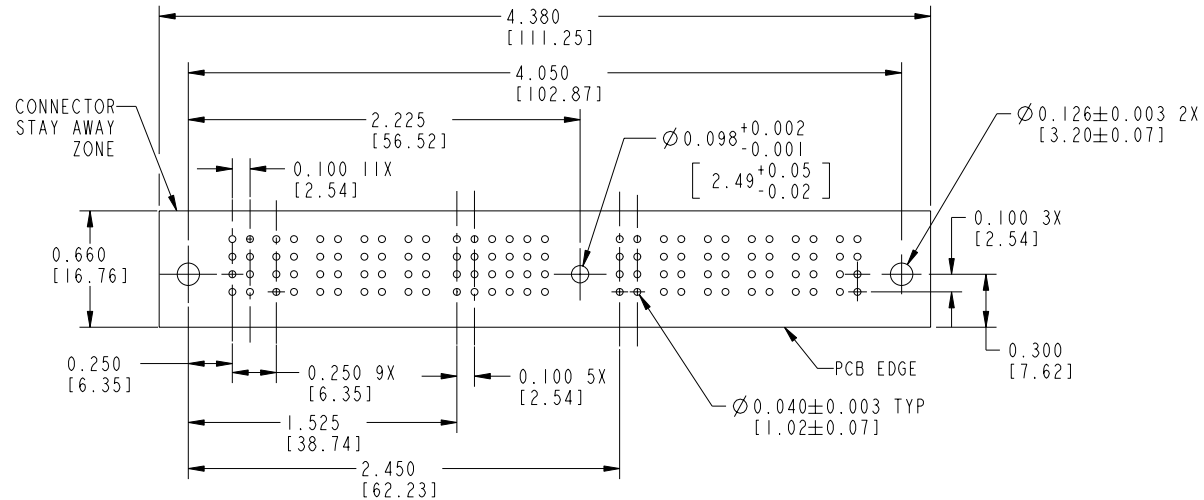
STATUS:Released

Printed: Feb 06, 2008

Tous droits strictement réservés. Reproduction ou communication a des tiers interdite sous quelque forme que ce soit sans autorisation écrite du propriétaire. Propriété de c FCI. Droits de reproduction FCI.

All rights strictly reserved. Reproduction or issue to third parties in any form whatever is not permitted without written authority from the proprietor. Property of FCI. Copyright FCI.

PRODUCT NUMBER
51624-00X_-
NOTE: (2)



RECOMENDED PCB LAYOUT

CONFIDENTIAL

mat'l code				SEE NOTES		tolerances unless otherwise specified		CUSTOMER		 www.fciconnect.com	
ltr	ecn no.	dr	date	linear	.xx±.01/.0.x±0.3		COPY		projection	title	
R					.xxx±.005/0.xx±0.13		MM			5P+24S+1M+6P RIGHT ANGLE SOLDER HEADER	
				angles	.xxx±.0020/.xxx±.051		1:1		product family	product family	
					0°±2°		A			PWRBLADE	
				dr	D. WOLFORD	01-28-99	scale		size	dwg no	213
				enr	J. BROWN	01-28-99	A		51624		sheet
				chr	J. BROWN	01-28-99					4
				appd	J. BROWN	01-28-99					
sheet index	revision sheet										

Pro/E

cage code 22526

PDM: Rev:S

STATUS:Released

Printed: Feb 06, 2008