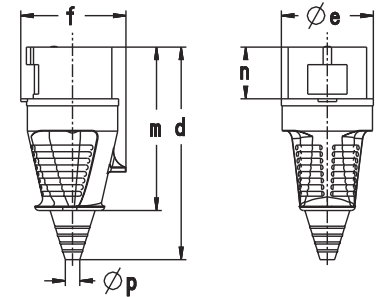
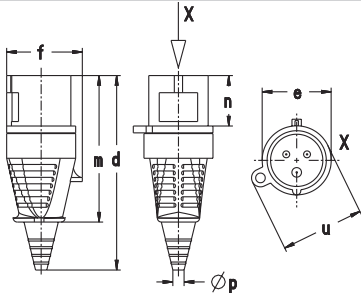


Page 13, item 3 230 etc.

Amp.	16	16	32	32	32
Pole	4	5	3	4	5
d	150-161	150-161	173-185	173-185	174-183
Øe	65	65	72	72	72
e1	35	35	38.5	38.5	38.5
f	63	71	75	75	83
m	111	111	128	128	128
n	37	37	45.5	45.5	45.5
Øp	7.5 / 19.5	7.5 / 19.5	9.6 / 24.5	9.6 / 24.5	9.6 / 24.5

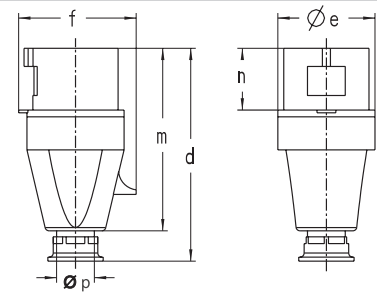


Page 14, item 2 210 PH, 230 PH

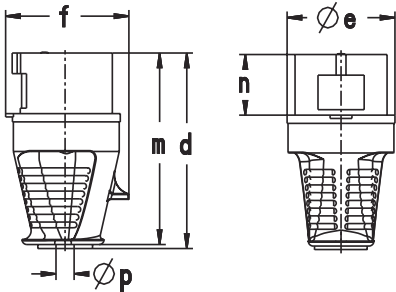


Amp.	16
Pole	3
d	143
e	51
f	60
m	108
n	37
Øp	7/13
u	61

Page 13, item 4a 212 306 etc.

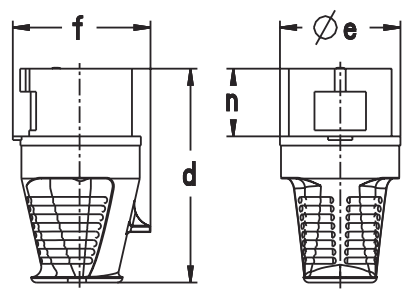


Page 14, item 3 211 PH, 231 PH

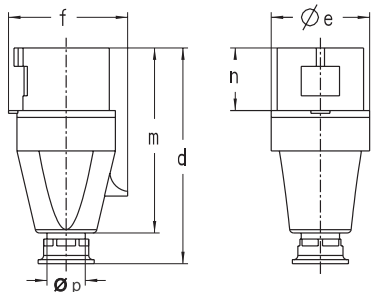


Amp.	16
Pole	3
d	111
Øe	51
f	60
m	108
n	37
Øp	8/15

Page 13, item 4b 215 306 etc.

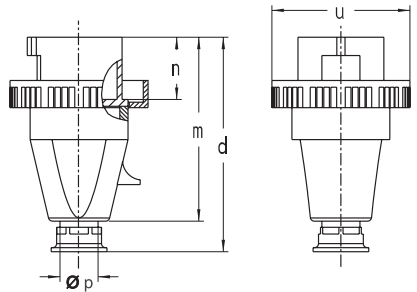


Page 14, item 4 230 DF etc.

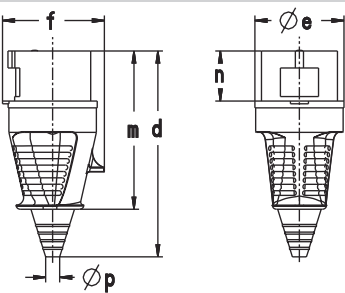


Amp.	16			32			63		
Pole	3	4	5	3	4	5	3	4	5
d	123	131	131	155	155	155	240	240	240
Øe	51	65	65	73	73	73	81	81	81
f	60	68	75	79	79	88	97	97	97
m	118	112	112	133	133	133	192	192	192
n	37	37	37	46	46	46	67	67	67
Øp	7.5-14.5/7.5-14.5/7.5-14.5	7.5-14.5/7.5-14.5/7.5-14.5	7.5-14.5/7.5-14.5/7.5-14.5	10-19.5/10-19.5/10-19.5	10-19.5/10-19.5/10-19.5	10-19.5/10-19.5/10-19.5	18-34.5/18-34.5/18-34.5	18-34.5/18-34.5/18-34.5	18-34.5/18-34.5/18-34.5

Page 13, item 5 211, 231, 261 etc.

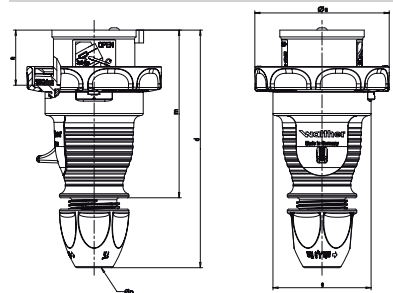


Page 14, item 5a 219306 etc. (black part nos.)

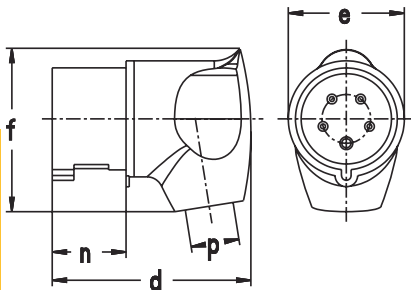


Amp.	63		
Pole	3	4	5
d	252	252	252
Øe	81	81	81
f	97	97	97
m	192	192	192
n	67	67	67
Øp	15/33	15/33	15/33

Page 13, item 5 260 etc.

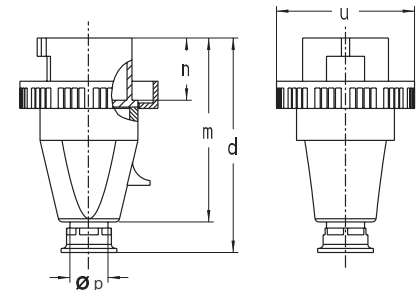


Page 14, item 5b 239 etc. (red part nos.)



Amp.	16			32		
Pole	3	4	5	3	4	5
d	85	98	98	115	115	115
e	50.3	64.3	64.3	72	72	72
f	70	86	86	96	96	100
n	37	37	37	45.8	45.8	45.8
p	8/15	10/16.5	10/16.5	11/22	11/22	11/22

Page 14, item 1 216, 236



Page 14, item 6 269, 279 etc.