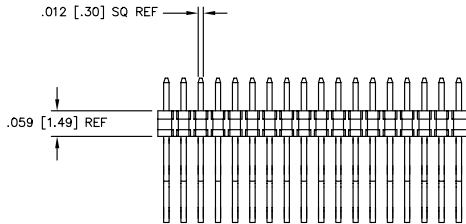
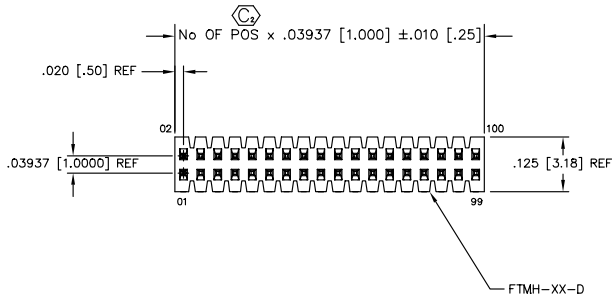


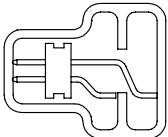
- NOTES:
1. COPLANARITY TO BE WITHIN .004 WHEN AT POSITION 05-25 & BE WITHIN .006 WHEN AT POSITION 26-50.
 2. MINIMUM PUSHOUT FORCE: 1 LB.
 3. SHEAR TAILS TO DIMENSION SHOWN, .003 [.08] MAX BURR.
 4. .015 [.38] MAX CUT FLASH; NO FLASH ALLOWED IN OR AROUND SURFACE MOUNT TAIL AREA.
 5. $\text{\textcircled{C}}$ REPRESENTS A CRITICAL DIMENSION.
 6. PINS 1 AND 2 TO BE FLUSH TO .0030 ABOVE LINE MADE BY THE BODY.
 7. ENDWALL TO BE .008 MIN.
 8. MAX. PIN VARIANCE .005 [.13].

LEAD STYLE	"A"
-02	.075 [.91]
-03	.065 [1.65]



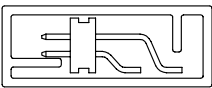
Do not scale from this print

PACKAGING VIEW
STYLE -02

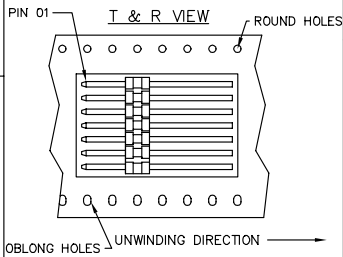


TUBE: PT-1-24-01-43
PLUG: TP-24

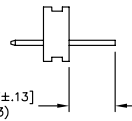
STYLE -03



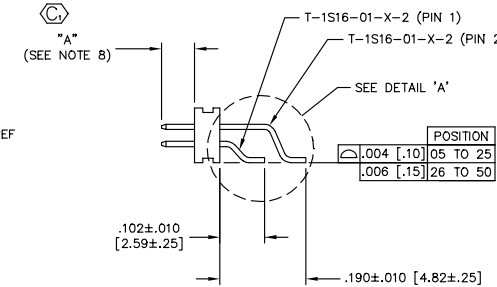
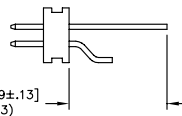
TUBE: PT-1-24-01-89
PLUG: TP-12



IN-PROCESS 1



IN-PROCESS 2



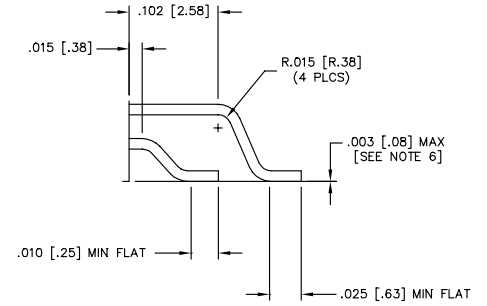
DIMENSIONS ARE IN INCHES UNLESS OTHERWISE NOTED
TOLERANCES ARE:
ONE PLACE DECIMALS ±.1[2.5] THREE PLACE DECIMALS ±.005[.13] ANGLES ± 2°
TWO PLACE DECIMALS ±.01[.3] FOUR PLACE DECIMALS ±.0020[.051]

FTMH-1XX-XX-XX-DH-X-XX

- No OF POSITIONS -05 THRU -50 (PER ROW)
- LEAD STYLE SPEC -03: .065 POST (USE T-1S16-01-X-2) -02: .075 POST (USE T-1S16-01-X-2)
- OPTION 2 -TR: TAPE & REEL PACKAGING
- OPTION 1 -K: POLYIMIDE FILM PAD (-05 THRU -50 POSITIONS ONLY)

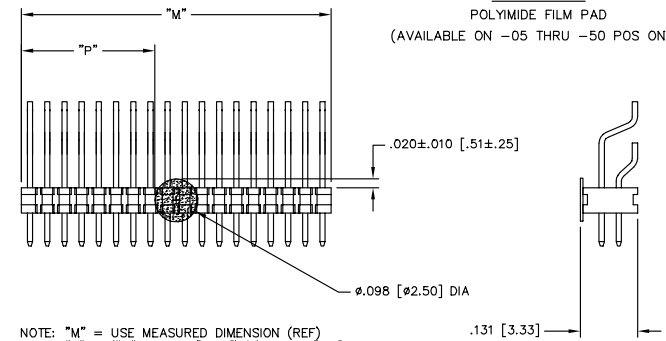
- PLATING SPEC -L: LIGHT SELECTIVE (USE T-1S16-XX-L-2) -F: FLASH SELECTIVE (USE T-1S16-XX-F-2) -H: HEAVY SELECTIVE (USE T-1S16-XX-H-2) -LM: LIGHT SELECTIVE GOLD, MATTE TIN TAIL (USE T-1S16-XX-L-2) -FM: FLASH SELECTIVE GOLD, MATTE INT TAIL (USE T-1S16-XX-F-2)

- ROW SPECIFICATION -DH: DOUBLE HORIZONTAL (USE FTMH-75-D)



DETAIL 'A'
SCALE: 2x

-K OPTION
POLYIMIDE FILM PAD
(AVAILABLE ON -05 THRU -50 POS ONLY)



NOTE: "M" = USE MEASURED DIMENSION (REF)
"P" = ("M" - .098 [2.50])/2 ±.020 [.51]

MATERIAL:
BODY: ZENITE 6130L
COLOR: BLACK
TERMINAL: PHOS BRONZE, 510

MAX BOW ALLOWED: .002 [.05]
MAX FLASH ALLOWED: .002 [.05]

PLOT SCALE: .225/ DIMSCALE .150



EXISPROD\ASSEMBLY\1MM FTMH\DHAM
520 PARK EAST BLVD. NEW ALBANY, INDIANA 47150
PHONE (812) 944-6733 P.O. BOX 1147
CODE 55322

MADE BY: D PURVIS 10/13/98

PROPRIETARY NOTE
THIS DOCUMENT CONTAINS INFORMATION CONFIDENTIAL AND PROPRIETARY TO SAMTEC INC. AND SHALL NOT BE REPRODUCED OR TRANSMITTED TO OTHER FORMS OR BY ANY MEANS, EITHER OR USED FOR ANY PURPOSE, OTHER THAN THAT FOR WHICH IT WAS OBTAINED WITHOUT THE EXPRESSED WRITTEN CONSENT OF SAMTEC INC.