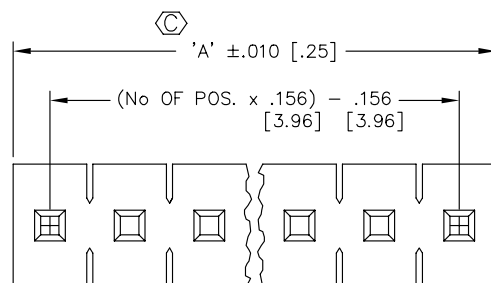


REVISION U

UNLESS OTHERWISE NOTED  
DIMENSIONS ARE IN INCHES TOLERANCES ARE:ONE PLACE DECIMALS  $\pm .1$  [2.5] THREE PLACE DECIMALS  $\pm .005$  [.13]  
TWO PLACE DECIMALS  $\pm .01$  [.25] FOUR PLACE DECIMALS  $\pm .0020$  [.051]ANGLES  
 $\pm 1^\circ$ TITLE:  
.045 SQ  
POST ASMDWG NO:  
FWJ-XX-XX-TX-S-XX  
SHEET 1 OF 1DO NOT SCALE  
FROM THIS PRINT

FWJ-XX-XX-TX-S-XX

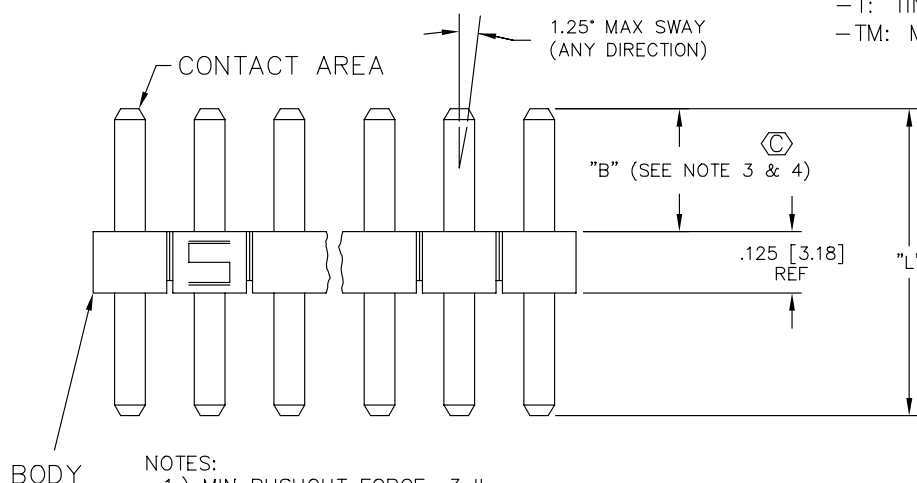
POSITION SPECIFICATION  
-01 THRU -23  
"A" = XX x .156 [3.96]  
-24 = SEE FSW-24-156

LEAD STYLE SPECIFICATION  
SEE TABLE 1

PLATING SPECIFICATION  
-T: TIN  
-TM: MATTE TIN

OPTION  
-RA = RIGHT ANGLE

BODY SPECIFICATION  
USE FSW-24-156

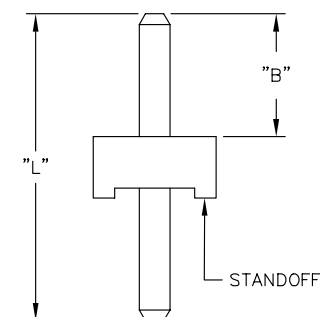


BODY

## NOTES:

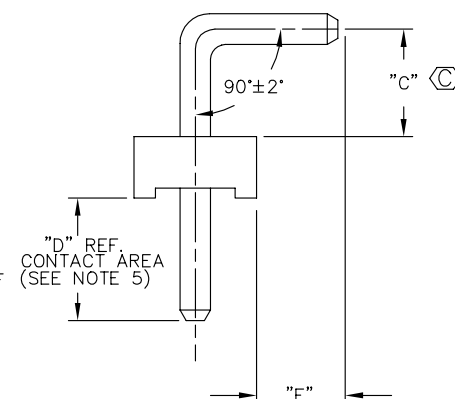
- 1.) MIN PUSHOUT FORCE: 3 lbs.
- 2.) MAX ALLOWABLE BOW AFTER ASSEMBLY:  
.003 [.08] INCH/INCH
- 3.) HEIGHT VARIATION BETWEEN PINS  
SHALL BE .005 [.13] MAX.

- 4.) BANDOLIER AREA TO BE POSITIONED ABOUT OR TOWARDS  
STANDOFF SIDE OF BODY. ENTIRE BANDOLIER AREA MUST  
NOT BE LOCATED IN CONTACT AREA
- 5.) BANDOLIERS CANNOT BE ENTIRELY LOCATED IN  
CONTACT AREA.



-RA

IN PROCESS VIEW



RIGHT ANGLE

-02 &amp; -04 ONLY

TABLE 1

STYLE	TERMINAL	"B" POST	"L" OAL	-RA ONLY		
				"C"	"D"	"E"
-01	T-1S8-01-TX	.450 [11.43]	.750 [19.05]	N/R	N/R	
-02	T-1S8-02-TX	.500 [12.70]	.800 [20.32]	.100 [2.54]	.175 [4.45]	.320 [8.13] REF
-03	T-1S8-03-TX	.674 [17.12]	.955 [24.25]	**195 [3.81]	**156 [3.96]	**320 [8.13] REF
-04	T-1S8-04-TX	.809 [20.55]	1.090 [27.69]	.195 [3.81]	.156 [3.96]	.534 [13.56] REF
-05	T-1S8-11-TX	.150 [3.81]	.750 [19.05]	N/R	N/R	N/R

\*\* NOT RELEASED FOR PRODUCTION

## PROPRIETARY NOTE

THIS DOCUMENT CONTAINS INFORMATION  
CONFIDENTIAL AND PROPRIETARY TO  
SAMTEC INC. AND SHALL NOT BE  
REPRODUCED OR TRANSFERRED TO  
OTHER DOCUMENTS OR DISCLOSED TO  
OTHERS OR USED FOR ANY PURPOSE  
OTHER THAN THAT FOR WHICH IT WAS  
OBTAINED WITHOUT THE EXPRESSED  
WRITTEN CONSENT OF SAMTEC INC.

EXISPROD\ASSEMBLY\MISC  
FWJ-ASM**samtec**

520 PARK EAST BLVD. NEW ALBANY, INDIANA 47150  
PHONE (812) 944-6733 P.O. BOX 1147  
CODE 55322

MADE BY:  
DEAN PURVIS 2-19-86FWJ-XX-XX-TX-S-XX  
SHEET 1 OF 1