

DO NOT SCALE FROM THIS PRINT

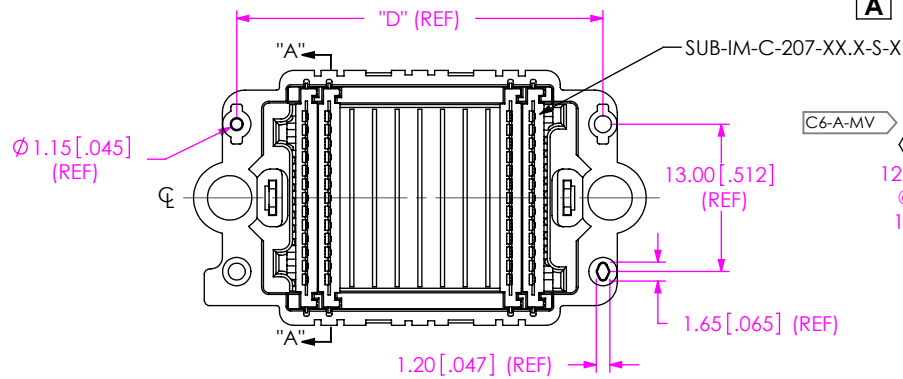
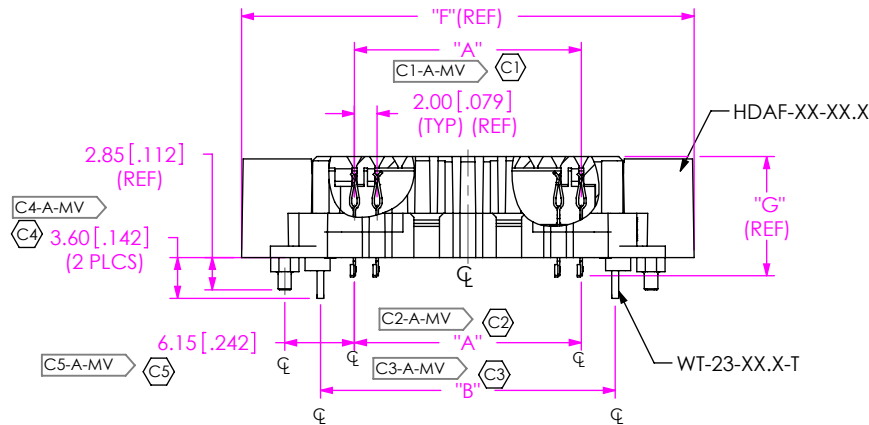
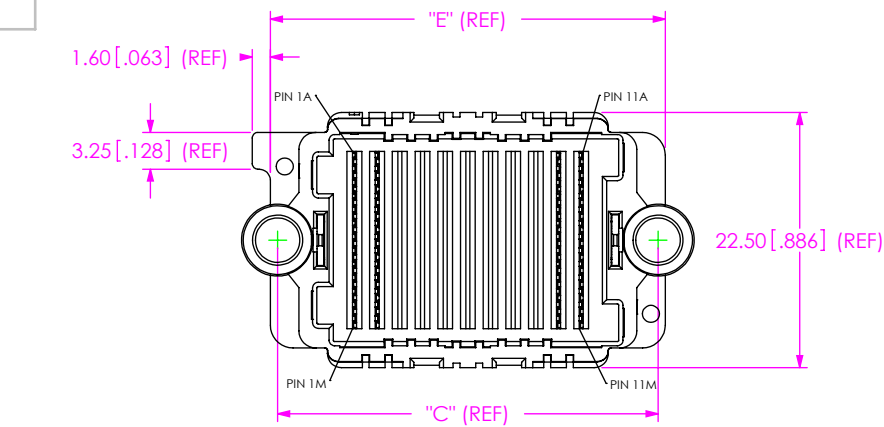


FIG. 1
-11: TT POSITION
(HDAF-11-08.0-X-13-X-X SHOWN)
(SOME WAFERS NOT SHOWN FOR CLARITY)

NOTES:

1. C REPRESENTS A CRITICAL DIMENSION.
2. MINIMUM PUSHOUT FORCE: 2.22N [.5 LB]. FOR WAFERS AND WELD TABS.
3. CONNECTORS TO BE PACKAGED IN TRAYS.
4. DIMENSION FROM ϕ OF END TAIL TO ϕ OF -A PIN. **A**

**DESIGNED & DIMENSIONED
IN MILLIMETERS
(INCHES FOR REFERENCE ONLY)**

HDAF-XX-XX.X-X-13-X-X

No OF POSITIONS
(13 ROWS PER POSITION)
-11
-15
-23

LEAD STYLE
-08.0: 8MM
-18.0: 18MM

PLATING SPECIFICATION

-S: SELECTIVE, .000030 INCHES GOLD IN MATING AREA,
MATTE TIN ON TAIL AND WELD TABS

OPTION

-P: PICK & PLACE PAD
(USE MPP-26-01-N)

SOLDER CHARGE MATERIAL

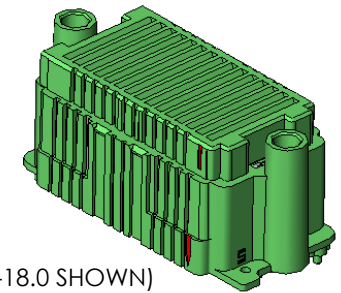
- 1: 63% TIN / 37% LEAD
- 2: 95.5% TIN / 3.8% SILVER
0.7% COPPER (LEAD FREE)

No OF ROWS
-13

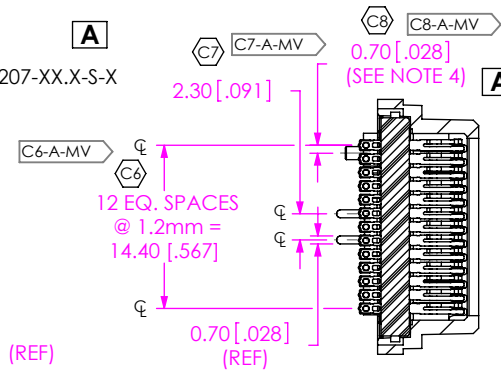
| STYLE | "BODY CALLOUT" | "CONTACT WAFER" | "SOLDER NAIL" |
|-------|----------------|-----------------------|---------------|
| -08.0 | HDAF-XX-08.0 | SUB-IM-C-207-08.0-S-X | WT-23-08.0-T |
| -18.0 | HDAF-XX-18.0 | SUB-IM-C-207-18.0-S-X | WT-23-18.0-T |

| HDAF LEAD STYLE | HDAM LEAD STYLE | |
|-----------------|-----------------|--------|
| | -12.0 | -17.0 |
| -08.0 | 20.0MM | 25.0MM |
| -18.0 | 30.0MM | 35.0MM |

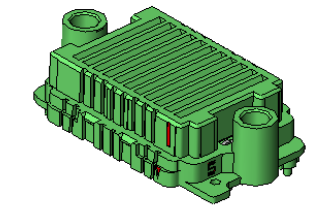
A



A



SECTION "A"- "A"



UNLESS OTHERWISE SPECIFIED,
DIMENSIONS ARE IN
MILLIMETERS (INCHES).
TOLERANCES ARE:
DECIMALS ANGLES
X: +0.3 [.01]
.XX: +0.13 [.005]
.XXX: +0.051 [.0020]

PROPRIETARY NOTE

THIS DOCUMENT CONTAINS INFORMATION
CONFIDENTIAL AND PROPRIETARY TO
SAMTEC, INC. AND SHALL NOT BE REPRODUCED
OR TRANSFERRED TO OTHER DOCUMENTS OR
DISCLOSED TO OTHERS OR USED FOR ANY
PURPOSE OTHER THAN THAT WHICH IT WAS
OBTAINED WITHOUT THE EXPRESSED WRITTEN
CONSENT OF SAMTEC, INC.

MATERIAL: DO NOT SCALE DRAWING
INSULATOR: LCP COLOR: BLACK
CONTACT: COPPER ALLOY
WAFER MATERIAL: LCP, COLOR: BLACK
PICK AND PLACE PAD: COPPER ALLOY
WELD TAB: BRASS



F:\DWG\MISC\MKTG\HDAF-XX-XX.X-X-13-X-X-MKT.SLDDRW

SHEET SCALE: 1.5:1

SAMTEC

520 PARK EAST BLVD, NEW ALBANY, IN 47150
* PHONE 812.944.6733 FAX: 812.948.5047
e-Mail: INFO@SAMTEC.COM CODE: 55322

DESCRIPTION:
2.0MM PITCH HD ARRAY SOCKET ASSEMBLY

DWG. NO. HDAF-XX-XX.X-X-13-X-X

BY: D KNOWLDEN 7/14/2005 SHEET 1 OF 2

| TABLE 3 | | | | | | | | |
|-------------|------------|--------------|-------------|---------------|---------------|---------------|---------------|--------------|
| No. OF POS. | LEAD STYLE | "A" | "B" | "C" | "D" | "E" | "F" | "G" |
| 11 | 08.0 | 20.0 [1.787] | 26.0 [1.02] | 33.55 [1.321] | 32.30 [1.272] | 34.82 [1.371] | 39.92 [1.572] | 10.51 [.414] |
| 15 | 08.0 | 28.0 [1.102] | 34.0 [1.34] | 41.55 [1.636] | 40.30 [1.587] | 42.82 [1.686] | 47.92 [1.887] | 10.51 [.414] |
| 23 | 08.0 | 44.0 [1.732] | 50.0 [1.97] | 57.55 [2.266] | 56.30 [2.217] | 58.82 [2.316] | 63.92 [2.517] | 10.51 [.414] |
| 11 | 18.0 | 20.0 [1.787] | 26.0 [1.02] | 33.55 [1.321] | 32.30 [1.272] | 34.82 [1.371] | 39.92 [1.572] | 20.51 [.807] |
| 15 | 18.0 | 28.0 [1.102] | 34.0 [1.34] | 41.55 [1.636] | 40.30 [1.587] | 42.82 [1.686] | 47.92 [1.887] | 20.51 [.807] |
| 23 | 18.0 | 44.0 [1.732] | 50.0 [1.97] | 57.55 [2.266] | 56.30 [2.217] | 58.82 [2.316] | 63.92 [2.517] | 20.51 [.807] |

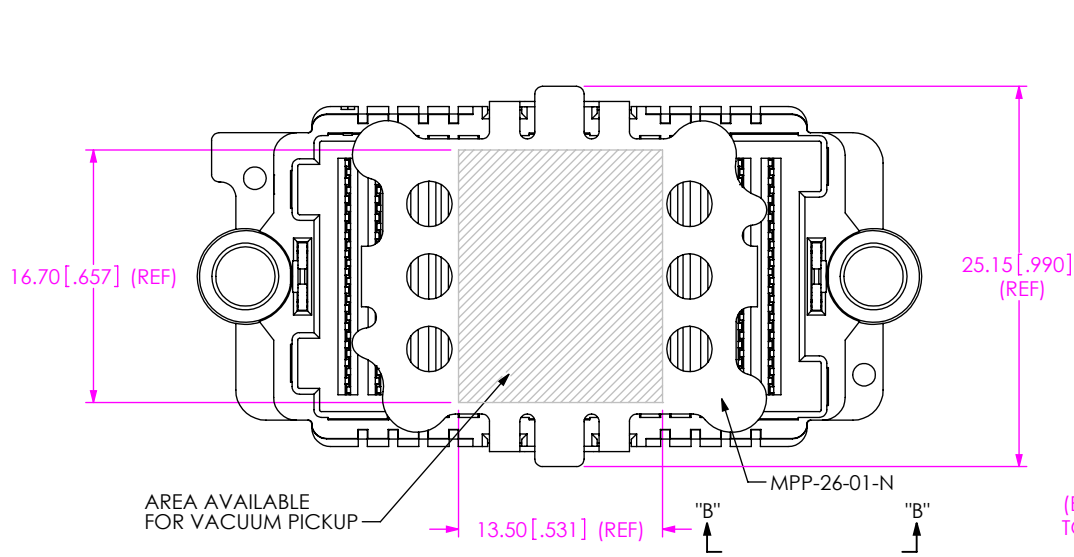
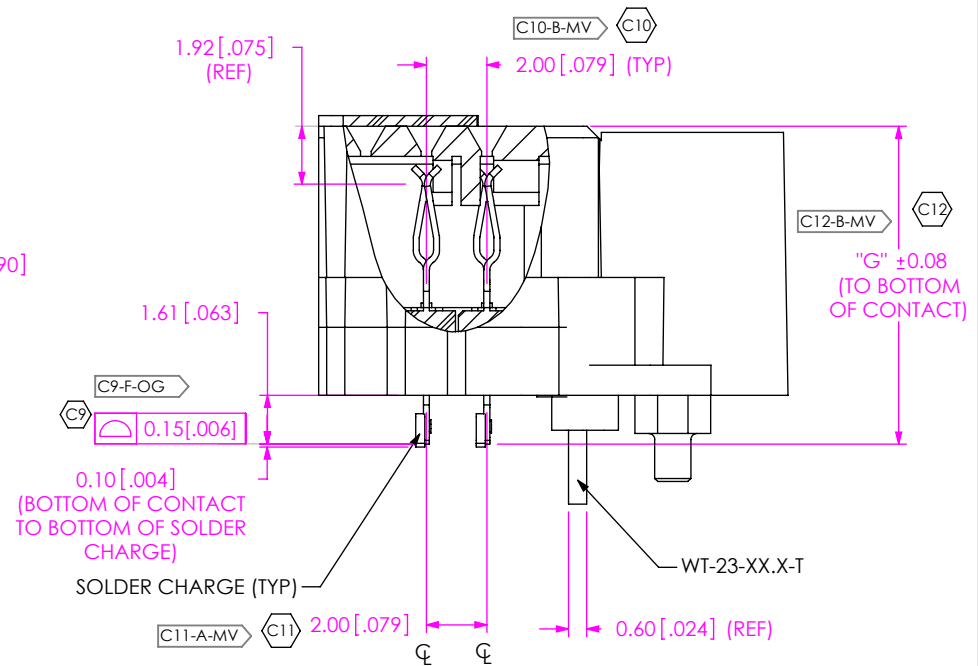
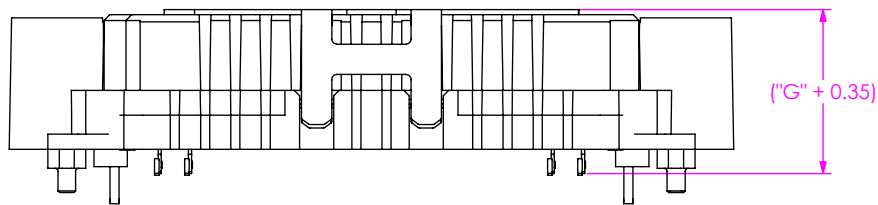


FIG. 2
-15: 15 POSITION
(HDAF-15-08.0-X-13-X-P SHOWN)
(SOME WAFERS NOT SHOWN FOR CLARITY)



VIEW "B"-"B"
SCALE 4:1

| CRITICAL DIMENSION INSPECTION INSTRUCTION TABLE | | |
|---|---------------------------------------|---|
| ASSEMBLY OPERATION | START-UP INSPECTION INSPECT CODE A | IN-PROCESS INSPECTION INSPECT CODE B |
| FILL WAFER | C1, C2, C5, C6, C8, C11 | C10, C12 |
| FILL WELD TABS | C2, C3, C4, C5, C11 | C12 |
| INSTALL PAD | C2, C5, C11 | N/A |

| | |
|---|--|
| <p>PROPRIETARY NOTE THIS DOCUMENT CONTAINS INFORMATION CONFIDENTIAL AND PROPRIETARY TO SAMTEC, INC. AND SHALL NOT BE REPRODUCED OR TRANSFERRED TO OTHER DOCUMENTS OR DISCLOSED TO OTHERS OR USED FOR ANY PURPOSE OTHER THAN THAT WHICH IT WAS OBTAINED WITHOUT THE EXPRESSED WRITTEN CONSENT OF SAMTEC, INC.</p> <p>DO NOT SCALE DRAWING</p> <p>SHEET SCALE: 1:1</p> | <p>SAMTEC 520 PARK EAST BLVD. NEW ALBANY, IN 47150 * PHONE: 812.944.6733 FAX: 812.948.5047 e-Mail: INFO@SAMTEC.COM CODE: 55322</p> |
| | |