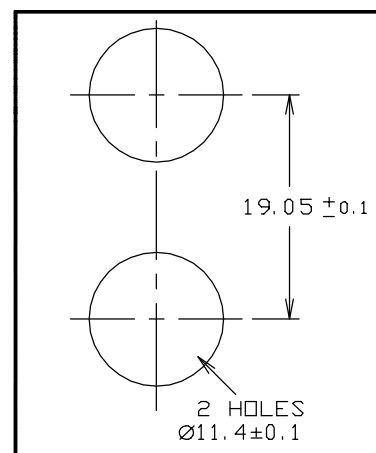
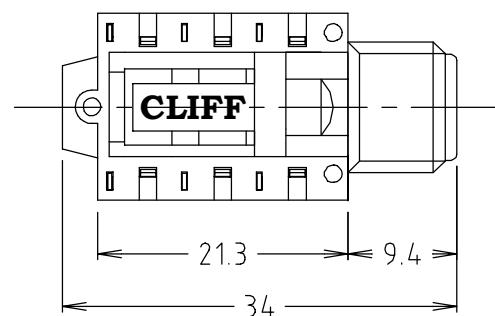
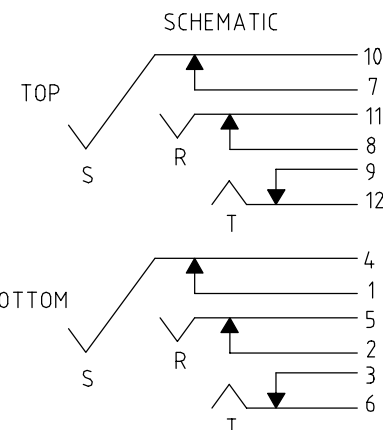
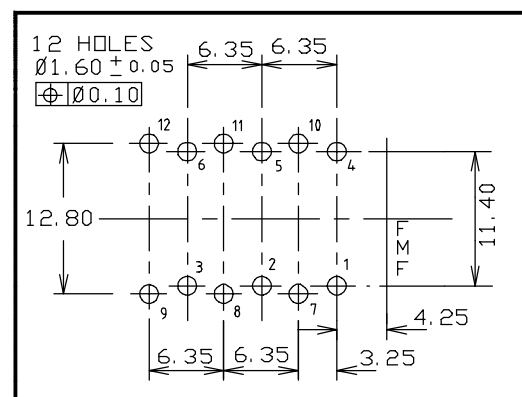


FCR1406



PANEL CUTOUT  
DETAIL

PC LAYOUT  
(COMPONENT SIDE)



SWITCH CONTACTS OPEN WHEN  
PLUG IS INSERTED, CLOSE WHEN  
PLUG IS WITHDRAWN.

ISS.	AMEND	DATE
1	1st DRAWN	18/12/01
2	SCHEMATIC ADDED	15/02/02
3	NUT P/No ADDED	07/05/04
4	9+12 PIN REVERSED	01/04/11
5	OVERALL HEIGHT ERR	24/07/12
6	DIMS AMENDED	22/09/15

## NOTE

- A) NUTS SUPPLIED UNASSEMBLED BULK PACKED
- B) SUPPLIED WITHOUT WASHERS.
- C) TRAY PACKING 100 / TRAY

<b>RoHS</b> COMPLIANT
<b>TOLERANCE</b>
NO DEC. PLACE ± 0.50
1 DEC. PLACE ± 0.20
2 DEC. PLACE ± 0.10
HOLE Ø ± 0.10
ANGLES ± 1/2°
UNLESS OTHERWISE STATED

## Cliff Electronic Components Ltd.

76 Holmehorpe Avenue, Holmehorpe Industrial Estate,  
Redhill, Surrey, RH1 2PF, England, UK  
Tel: 01737-771375 Fax: 01737-766012 Website: www.cliffuk.co.uk

THE CONTENTS OF THIS DOCUMENT MUST NOT BE COPIED OR DISCLOSED  
TO A 3rd PARTY WITHOUT WRITTEN PERMISSION OF CLIFF UK. © 2001

DIMENSIONS IN MILLIMETERS UNLESS OTHERWISE STATED. WORK TO DIMENSIONS. REMOVE ALL BURRS. IF IN DOUBT ASK.

MATERIAL: COMPOSITE

FINISH: CLEAN

DRAWN: C.A.M.J.

APPROVED: R.W.T.

3rd ANGLE PROJECTION:



TITLE: STACKJACK S1C/SH/BBBX2/WN

DRWG. No. FCR1124

DO NOT SCALE

FORM: A4DRWGH