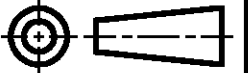


DO NOT SCALE

DIMENSIONS IN mm

METRIC

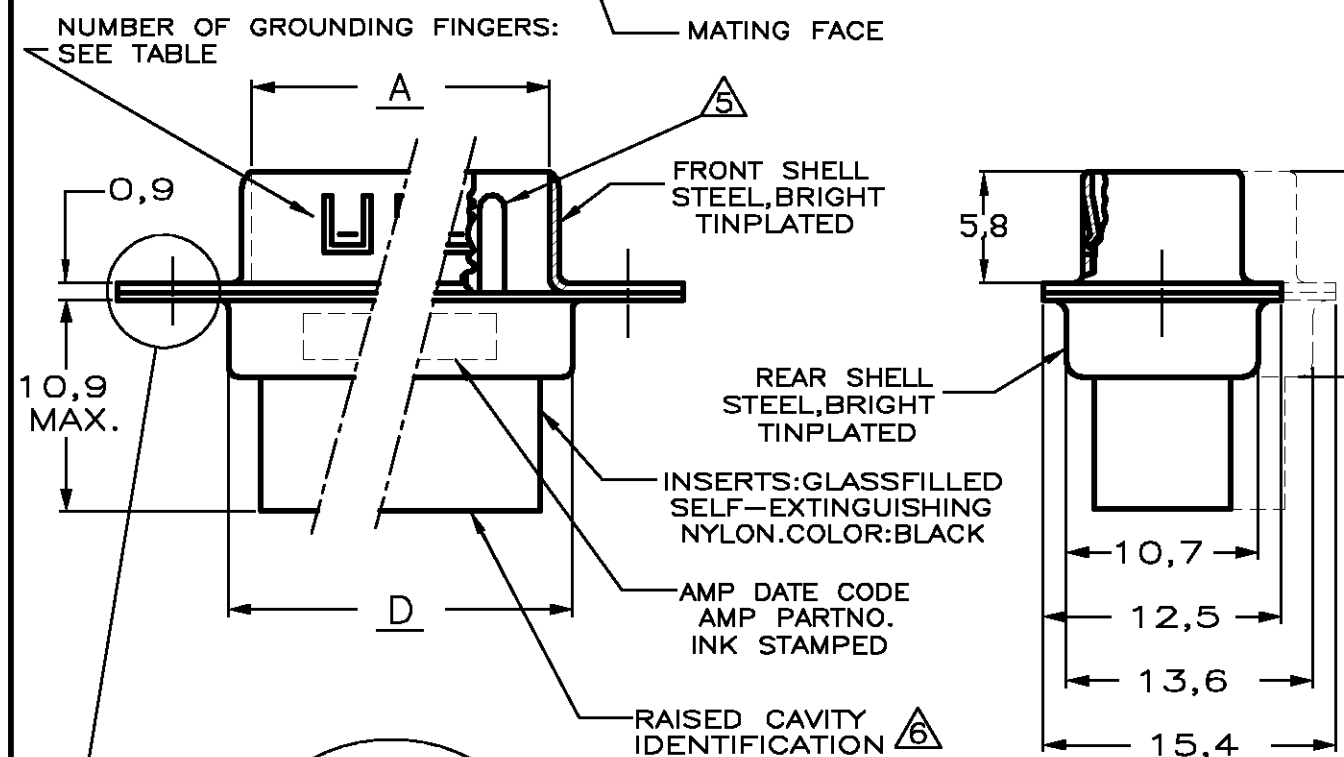
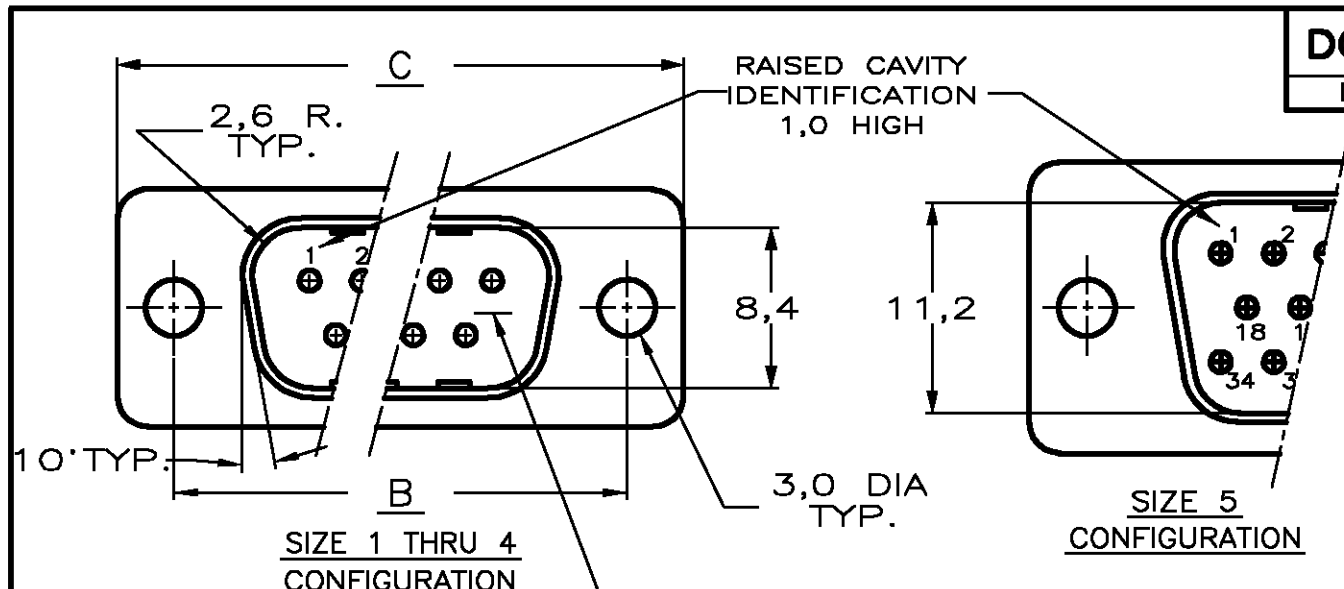
THIRD ANGLE PROJECTION



NOTES:

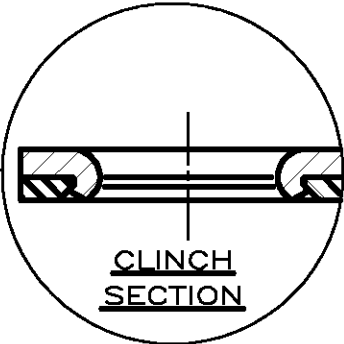
- 1 THIS PLUG ACCEPTS SIZE 20 PIN CONTACTS.
 - 2 MAXIMUM WIRE INSULATION RECOMMENDED FOR USE WITH THIS PLUG IS 1,73 DIA. MAX..
 - 3 RETENTION TINES ARE AN INTEGRAL PART OF INSERT.
 - 4 FOLLOWING INSERTION/REMOVAL TOOLS ARE RECOMMENDED FOR USE WITH THESE CONNECTORS:

32-28AWG/28-24AWG CONT's	24-20AWG CONTACTS
91067-3 INSERTION/REMOVAL	91067-2 INSERTION/REMOVAL
726363-1 INSERTION ONLY	726363-1 INSERTION ONLY
	726364-1 REMOVAL ONLY
- △ CONTACTS SHOWN FOR ILLUSTRATION ONLY, NO PART OF CONNECTOR PACKAGE: MUST BE ORDERED SEPARATELY.
- △ RAISED CAVITY IDENTIFICATION NUMBERS ON WIRE SIDE ARE WHITENED FOR -9 P/N'S.



5	2 X 5 AT 7,6 PITCH
4	2 X 5 AT 7,6 PITCH
3	2 X 8 AT 3,8 PITCH
2	2 X 5 AT 3,8 PITCH
1	2 X 3 AT 3,8 PITCH
SIZE	NUMBER OF GROUNDING FINGERS

55,3	66,9	61,1	52,9	50	5	167296-9	167296-1
57,7	69,3	63,5	55,4	37	4	167295-9	167295-1
41,3	53,0	47,0	39,0	25	3	167294-9	167294-1
27,5	39,1	33,3	25,3	15	2	167293-9	167293-1
19,3	30,8	25,0	16,9	9	1	167292-9	167292-1
D	C	B	A	NR. OF POS.	SIZE	AMP ORDER NUMBER	



CUSTOMER DRAWING				FOR REFERENCE ONLY WILL NOT BE UPDATED			
© COPYRIGHT 19 - BY AMP HOLLAND B.V. ALL INTERNATIONAL RIGHTS RESERVED. AMP PRODUCTS MAY BE COVERED BY U.S. AND FOREIGN AND/OR PATENTS PENDING. THIS DRAWING IS UNPUBLISHED. RELEASED FOR PUBLICATION _____, 19____							
						Tyco Electronics Corporation Oostkamp - BELGIUM	
H	SR10-0457-02	KV	24 OCT 02	HDP-20 PLUG CONNECTOR, SIZE 1-5			
G	SR10-0382-02	KV	22 AUG 02				
REV	REVISION RECORD		DR.	CHK.			
DR.:	B.MOOIJ	CHK.:	-	APP.:	-	DWG.No.	167292
DATE:	20 NOV 87	DATE:	-	DATE:	-	REV.LTR.	H
						SHEET	1 OF 1
						A3	

8 7 6 5 4 3 2 1