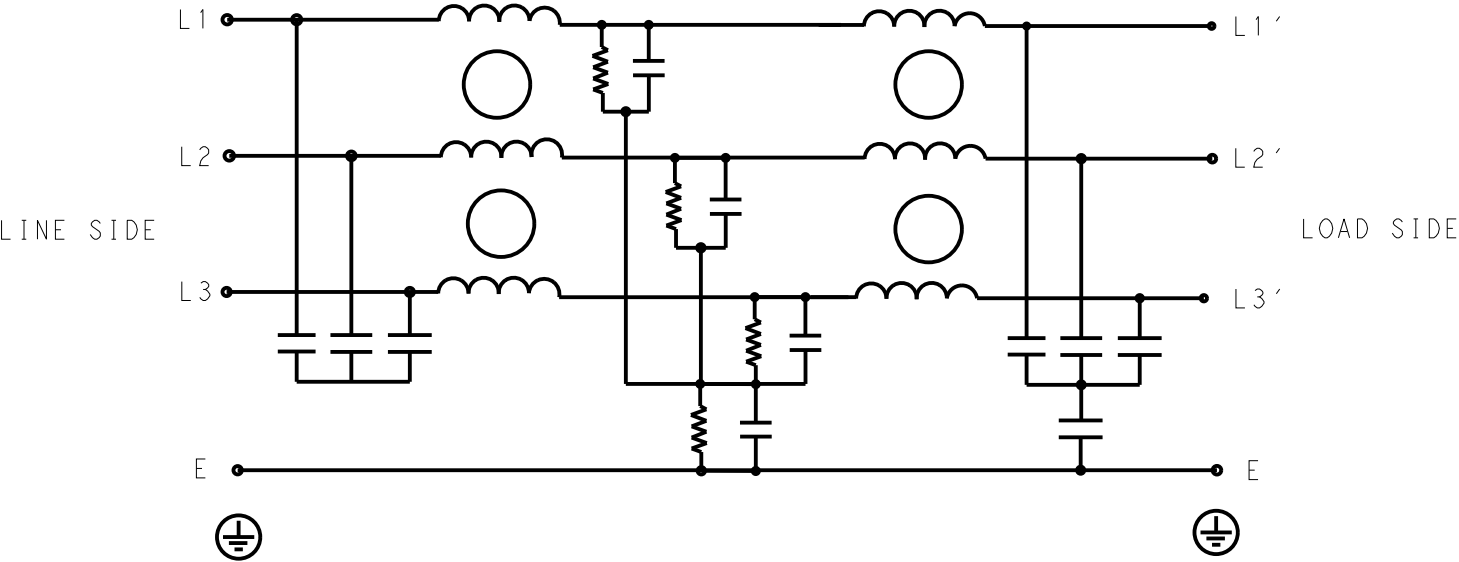
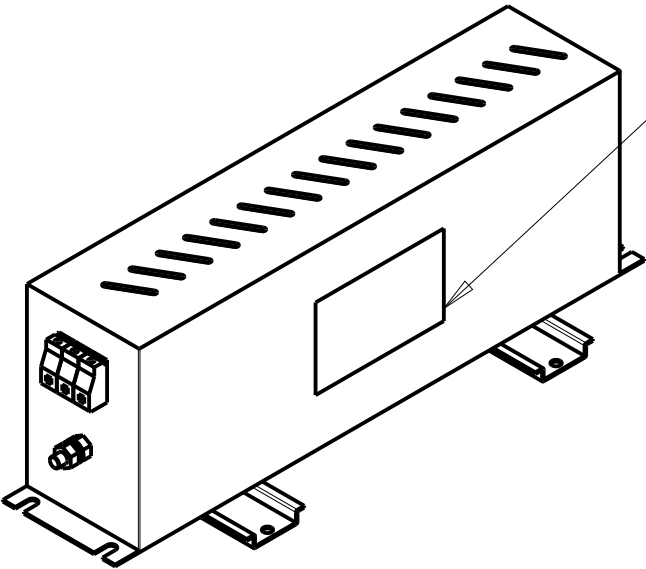


P	LTR	DESCRIPTION	DATE	DWN	APVD
	A	INITIAL RELEASE	26APR2021	SR	CB



TYPICAL INSERTION LOSS  
COMMON MODE 50/50Ω; DIFFERENTIAL MODE 50/50Ω

MHz	0.01	0.05	0.15	0.5	1	3	5	10	30
CM	42	46	69	77	82	64	57	47	39
DM	18	24	57	81	87	60	45	17	25



LABEL TO TE  
MARKING SPECIFICATION

SAFETY ORGANIZATIONS

THIS FILTER WILL BE FORMALLY RECOGNIZED, CERTIFIED OR APPROVED BY THE LISTED AGENCY. THEREFORE, ALL TEST/REQUIREMENTS SPECIFIED IN THE LATEST REVISION OF THE FOLLOWING AGENCY STANDARDS WILL BE MET:

UL APPROVED 30A 520V 50Hz/60Hz 40°C  
CSA APPROVED 30A 520V 50Hz/60Hz 40°C

OPERATING SPECIFICATION

LINE CURRENT/VOLTAGE: 30A, 520VAC  
LINE FREQUENCY: 50/60Hz

MAXIMUM LEAKAGE CURRENT: 10mA @ 230VAC, 50Hz

OPERATING AMBIENT TEMPERATURE RANGE @ RATED CURRENT: -25°C TO +40°C

IN AN AMBIENT, T<sub>a</sub>, HIGHER THAN 40°C, THE MAXIMUM OPERATING CURRENT, I<sub>o</sub>, IS AS FOLLOWS:

$$I_o = I_r \sqrt{\frac{85 - T_a}{45}}$$

RELIABILITY SPECIFICATIONS

STORAGE TEMPERATURE: -40°C TO +85°C  
HUMIDITY: 21 DAYS @ 40°C AND 95% RH

TEST SPECIFICATIONS

INDUCTANCE, NOMINAL: 4.8mH

CAPACITANCE @ 1kHz  
LINE TO GROUND, NOMINAL: 0.66μF  
LINE TO LINE, NOMINAL: 1.5μF

DISCHARGE RESISTOR

L/L I.R. 3MΩ 1W  
L/N I.R. XXX  
L/G I.R. 680KΩ 1W  
N/G I.R. XXX  
IR (NO DISCHARGE RESISTOR) 20°C, 50% RH AND 100VDC, MIN: 6MΩ

RECOMMENDED RECEIVING INSPECITON HIPOT

LINE TO GROUND FOR 1 MINUTE: 2856VDC  
LINE TO LINE FOR 1 MINUTE: 2236VDC

FILTER APPROVAL

THE BEST WAY TO SELECT AND QUALIFY A FILTER IS FOR YOUR ENGINEERING TO TEST THE UNIT IN YOUR EQUIPMENT.

THIS DRAWING IS A CONTROLLED DOCUMENT.		DWN SUPREETH R 26APR2021	TE Connectivity		
DIMENSIONS: mm		CHK CHRIS BOLLE 26APR2021			
TOLERANCES UNLESS OTHERWISE SPECIFIED:		APVD CHRIS BOLLE 26APR2021	NAME POWER LINE FILTER FOR DIN RAIL 35 INSTALLATION 30KEHD10BBSVDM		
0 PLC ±0.5 1 PLC ±0.4 2 PLC ±0.130 3 PLC ±0.0500 4 PLC ±0.0500 ANGLES ±0.5		PRODUCT SPEC -	SIZE A300779		
MATERIAL -		APPLICATION SPEC -	CAGE CODE C-6-1609969-5		
FINISH -		WEIGHT -	DRAWING NO C-6-1609969-5		
-		CUSTOMER DRAWING	RESTRICTED TO -		
			SCALE 3:10		
			SHEET 1 OF 2		
			REV A		

(C) 2021 TE Connectivity. All Rights Reserved.

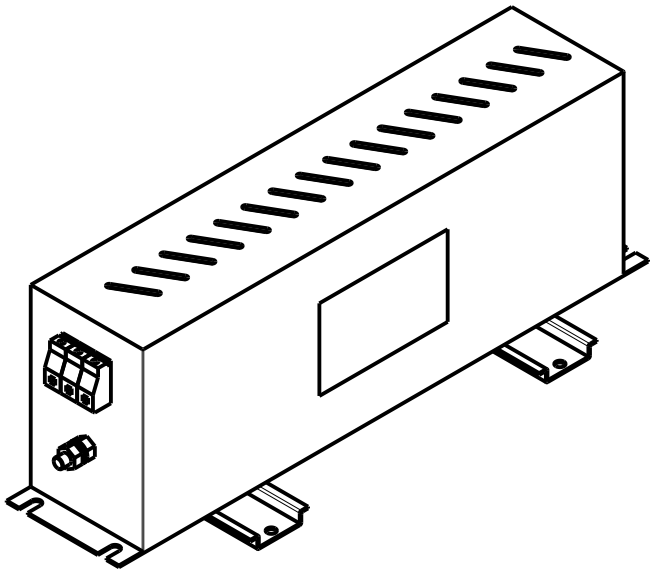
NOTE 1 GROUND CONNECTION:  
FOR ELECTRICAL SAFETY AND FILTER PERFORMANCE  
UNIT MUST HAVE A GOOD GROUND CONNECTION.  
TORQUE OUTER TERMINAL SCREWS: 0.5Nm / 4.5 in.lbs  
TORQUE GROUND NUTS: 2.5-3Nm

NOTE 2 INPUT OUTPUT CONNECTION TERMINAL  
AWG SIZE: 26-12 AWG  
WIRE SECTION: 4 mm<sup>2</sup>  
THREADED BOLT SIZE FOR GROUND: M6

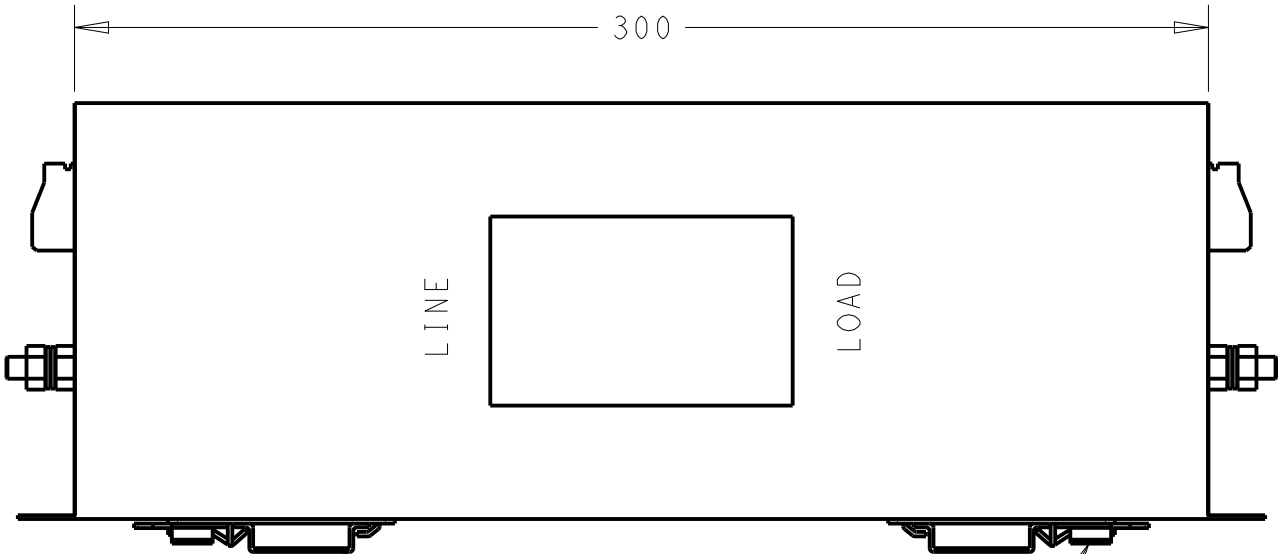
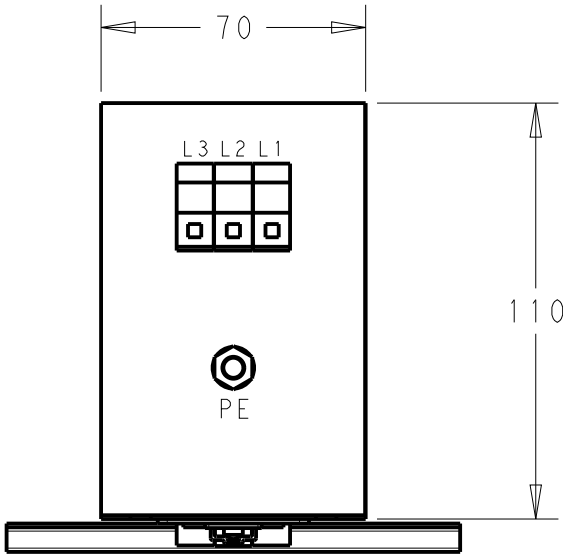
NOTE 3 SUPPLIED WITH DIN RAIL BRACKET.

NOTE 4 DRAWING SHOWS DIN RAIL FOR  
REFERENCE ONLY.

REVISIONS					
P	LTR	DESCRIPTION	DATE	DWN	APVD
		SEE SHEET 1			

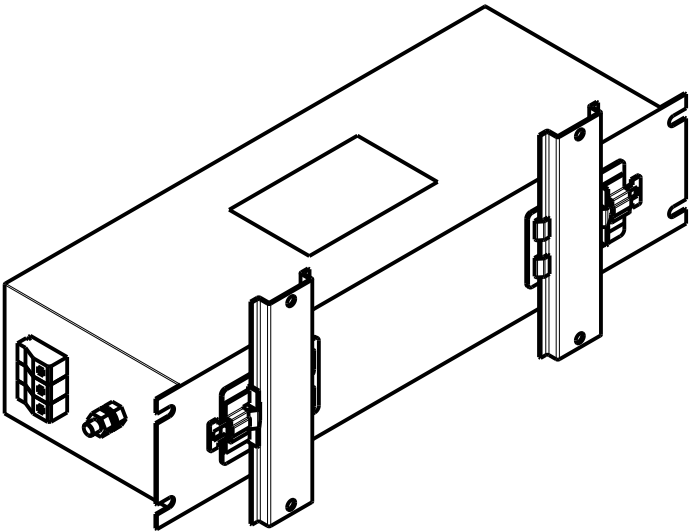
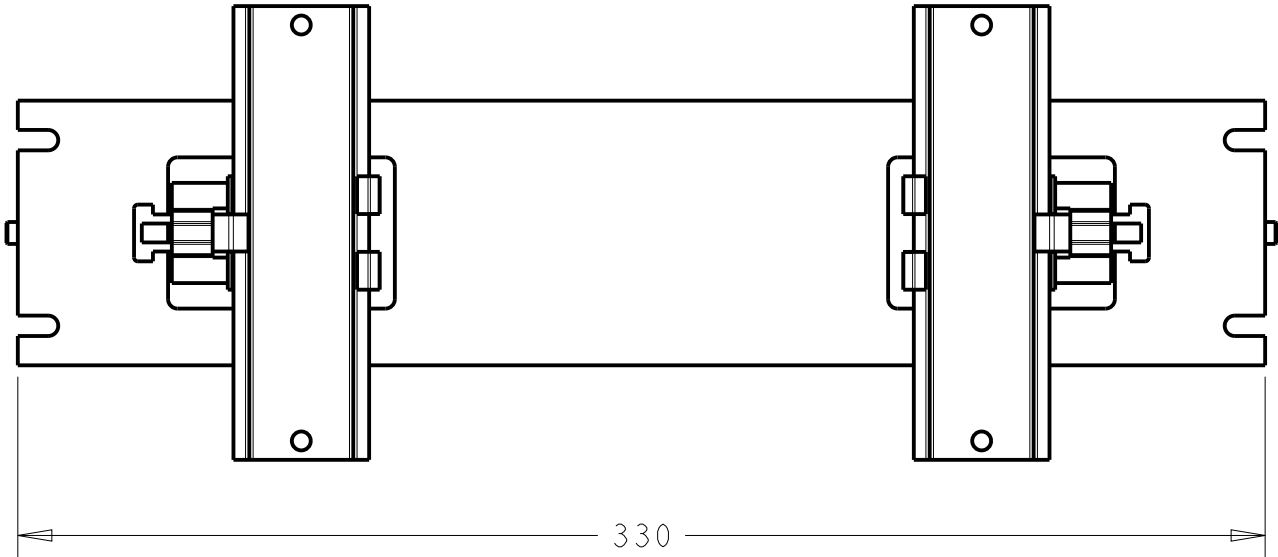


FRONT SIDE


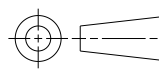


DIN RAIL CHANNEL

DIN 35 BRACKET



REAR SIDE

THIS DRAWING IS A CONTROLLED DOCUMENT.		DWN SUPREETH R 26APR2021	 TE Connectivity		
DIMENSIONS: mm		CHK CHRIS BOLLE 26APR2021			
		APVD CHRIS BOLLE 26APR2021			
		PRODUCT SPEC			
		APPLICATION SPEC	NAME POWER LINE FILTER FOR DIN RAIL 35 INSTALLATION 30KEHD10BBSVDM		
MATERIAL -		WEIGHT -	SIZE A300779	CAGE CODE C-6-1609969-5	RESTRICTED TO -
FINISH -		CUSTOMER DRAWING	SCALE 1:2	SHEET 2 OF 2	REV A