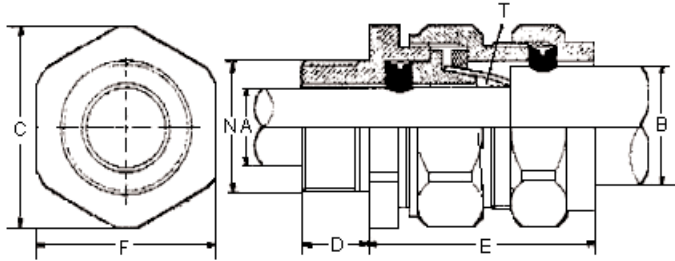


PART NO.

CBBR45 Series and DAVCW20S

REVISIONS

ECN #	REV	DESCRIPTION	DRAWN	DATE	CHECKD	DATE	APPRVD	DATE
-	A	RELEASED	Kiran	08/05/09	Suresh	08/05/09	Farnell	22/05/09



Dimensions : Millimetres

Application:

Outdoor or indoor requirement for all SWA applications provides for armour clamp and seal on outer sheath of cable.

Specifications

Description	Entry Thread		Cable Acceptance Details				Hexagonal Details		Assembled Length 'E'	Part Number	
	Diameter 'N'	Length 'A'	Diameter 'A'		Diameter 'B'		A/F 'F'	A/C 'C'			
			Minimum	Maximum	Minimum	Maximum					Armour Wire Size 'T'
Cable Gland, Indoor, 15.8mm, PK2	20	10	8.0	11.8	12.9	15.8	0.90/1.25	24.0	26.6	40.0	CBBR4560
Cable Gland, Indoor, 20.8mm, PK2			11.0	13.8	15.5	20.8		30.0	33.3	41.0	CBBR4561
Cable Gland, Indoor, 27.8mm, PK2	25		13.0	19.8	20.3	27.5	1.25/1.60	36.0	39.9	44.0	CBBR4562
Cable Gland, Outdoor, 15.8mm, PK2	20		8.0	11.8	12.9	15.8	0.90/1.25	24.0	26.6	40.0	DAVCW20S
Cable Gland, Outdoor, 20.8mm, PK2			11.0	13.8	15.5	20.8		30.0	39.9	41.0	CBBR4565
Cable Gland, Outdoor, 27.8mm, PK2	25		13.0	19.8	20.3	27.5	1.25/1.60	36.0	39.9	44.0	CBBR4566

Dimensions : Millimetres

<http://www.farnell.com>

<http://www.newark.com>

<http://www.cpc.co.uk>

This data sheet and its contents (the "Information") belong to the Premier Farnell Group (the "Group") or are licensed to it. No licence is granted for the use of it other than for information purposes in connection with the products to which it relates. No licence of any intellectual property rights is granted. The Information is subject to change without notice and replaces all data sheets previously supplied. The Information supplied is believed to be accurate but the Group assumes no responsibility for its accuracy or completeness, any error in or omission from it or for any use made of it. Users of this data sheet should check for themselves the Information and the suitability of the products for their purpose and not make any assumptions based on information included or omitted. Liability for loss or damage resulting from any reliance on the Information or use of it (including liability resulting from negligence or where the Group was aware of the possibility of such loss or damage arising) is excluded. This will not operate to limit or restrict the Group's liability for death or personal injury resulting from its negligence. PRO POWER is the registered trademark of the Group. © Premier Farnell plc 2009.

TOLERANCES:
UNLESS OTHERWISE SPECIFIED, DIMENSIONS ARE FOR REFERENCE PURPOSES ONLY.

DRAWN BY:	DATE:
Kiran	08/05/09
CHECKED BY:	DATE:
Suresh	08/05/09
APPROVED BY:	DATE:
Farnell	22/05/09

DRAWING TITLE:

Cable Gland - Indoor and Outdoor

SIZE A	DWG NO. P10002177	ELECTRONIC FILE 53352_DWG	REV A
SCALE: NTS		U.O.M.: mm	SHEET: 1 OF 1