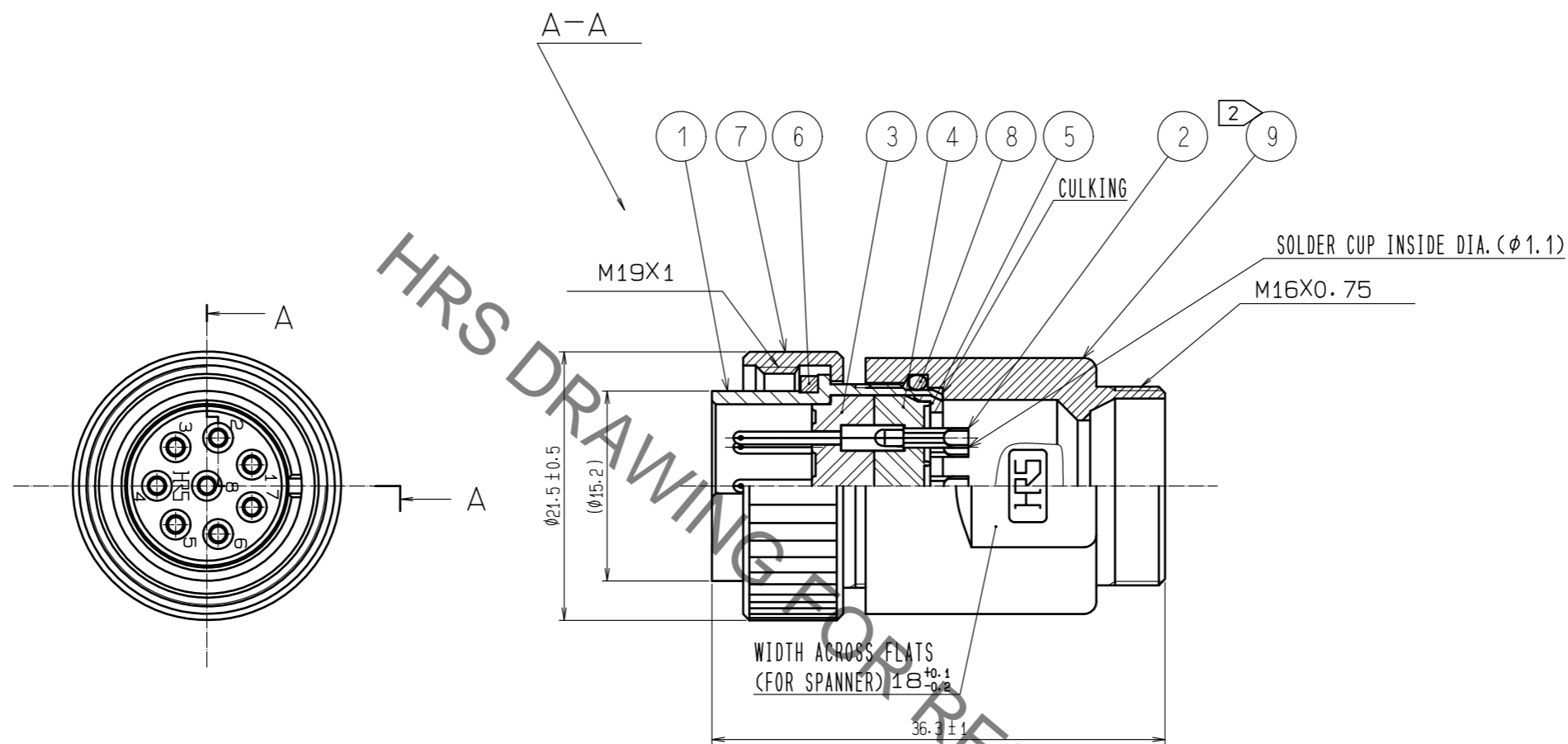


Nov.1.2021 Copyright 2021 HIROSE ELECTRIC CO., LTD. All Rights Reserved.  
In case of consideration for using Automotive equipment / device which demand high reliability, kindly contact our sales window correspondents.



- NOTES
- ONE EXAMPLE OF THE ROTATION OF REF.NO. ⑨ TO REF.NO. ① IS SHOWN.
  - THE RECOMMENDED CLAMP TORQUE, REF.NO. ⑨ : 3 N·m  
LOCTITE 243, HENKEL JAPAN OR EQUIVALENT IS RECOMMENDED TO PREVENT REF.NO. ⑨ FOR LOOSENING.
  - THIS PRODUCTS TO BE USED WITH CABLE CLAMP, JR13WCC-※(72).  
※ DESIGNATE DIAMETER(mm) OF APPLICABLE CABLE.

5	POLYACETAL	(WHITE)			
4	DIALLYL PHTHALATE	(BLACK) UL94V-0	9	ZINC ALLOY	CROME PLATING
3	DIALLYL PHTHALATE	(BLACK) UL94V-0	8	SILICONE RUBBER	(BLACK)
2	COPPER ALLOY	SILVER PLATING 2μm min.	7	BRASS	CROME PLATING
1	ZINC ALLOY	CROME PLATING	6	SILICONE RUBBER	(RED)
NO.	MATERIAL	FINISH . REMARKS	NO.	MATERIAL	FINISH . REMARKS
UNITS mm		SCALE 2 : 1	COUNT 	DESCRIPTION OF REVISIONS	DESIGNED
HIROSE ELECTRIC CO., LTD.		APPROVED : TP. KOMATSU	20210525	DRAWING NO.	EDC-111069-76-00
		CHECKED : HY. KOBAYASHI	20210525	PART NO.	RM15WTPZ-8P(76)
		DESIGNED : TY. SUZUKI	20210525	CODE NO.	CL0109-1618-4-76
		DRAWN : KR. SUZUKI	20210519		