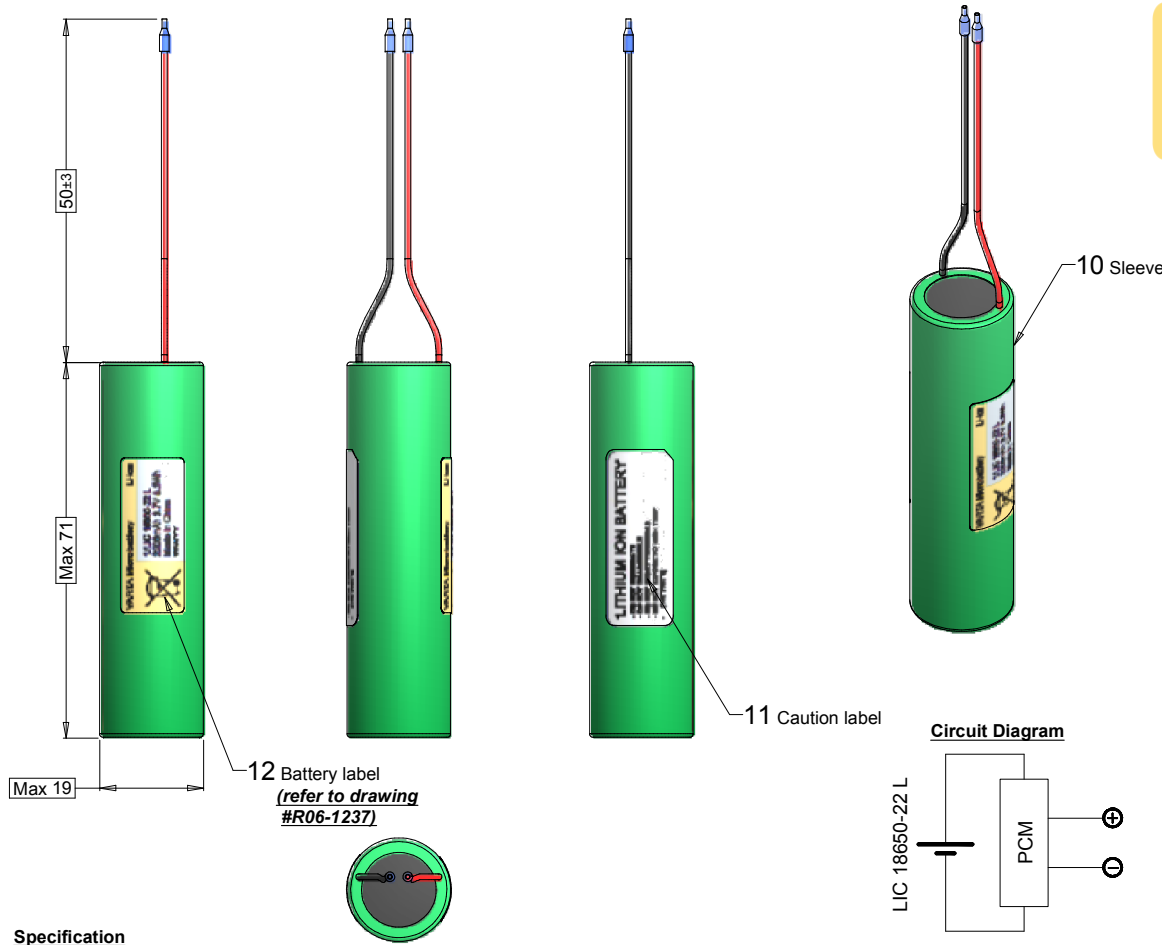


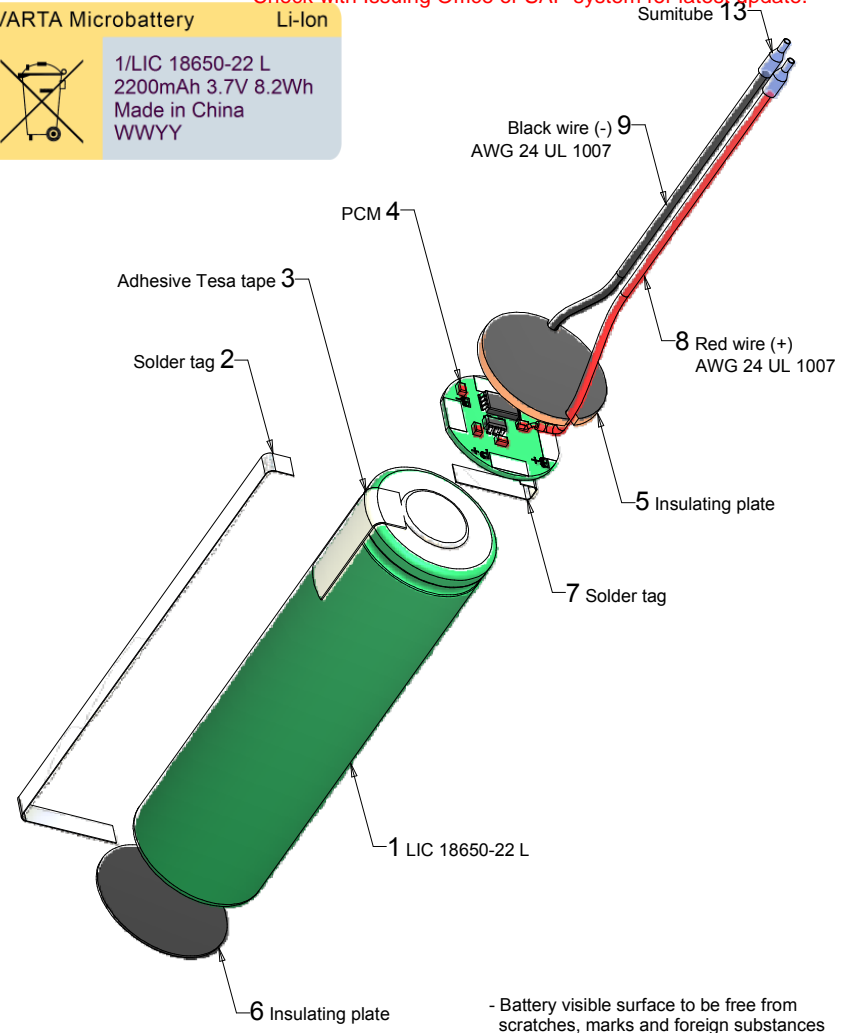
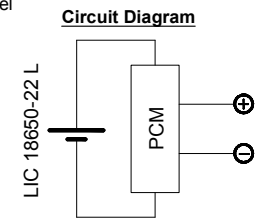
This is a controlled document.
 Hardcopy to be endorsed by authorized person.
 Check with Issuing Office or SAP system for latest update.



View label

VARTA Microbattery Li-Ion

1/LIC 18650-22 L
 2200mAh 3.7V 8.2Wh
 Made in China
 WWYY



Specification

1. General:
 Battery Pack in shrink sleeve incl. safety circuit, wires
 Cell: LIC 18650-22 L
 PCM: RP0HR300
 NTC:None
 ID:None
 Configuration: 1S
 Weight: appr. 50g

2. Electrical Specification:
 Rated Capacity: 2100mAh min, 2200mAh typical
 Nominal Voltage: 3.7V
 Watt-hour rating: 8.2Wh
 Charging Method: Constant Current + Constant Voltage
 Max. Charge Voltage [V]: 4.2(±50mV)
 Max. Continuous Charge Current: 2200mA (limited by cell DS)
 Rec. Charge cut off: 42mA or timer 3h
 Max. Continuous Discharge Current: 3000mA (limited by PCM)
 Rec. Discharge cut off: 3V
 Internal Impedance: approx.150mΩ
 Exp. Cycle Life:>300 cycles> 80% of initial cap. (0.5C/0.5C)

Cell protection
 Overcharge Detection: 4.325V ± 25mV (0.4 to 2sec. delay, resume 4.075V ± 50mV)
 Overdischarge Detection: 2.500V ± 80mV (40.0 to 200msec. delay, resume 2.900V ± 100mV)
 Overcurrent Detection: 3A to 5A (4 to 20msec. delay)

3. Ambient Conditions
 Temperature Range
 -Charge: 0 to +45°C
 -Discharge: -20 to +60°C
 -Charge Retention/Storage [%]: 1 year at -20 to 20°C >80%
 3 months at -20 to 45°C >80%
 1 month at -20 to 60°C >80%

-Humidity: 65 ± 20%RH

4. Environmental and Safety
 Please follow VARTA Handling and Safety Precautions for Lilon & LiPolymer
 The cell is approved according UL 1642.
 This battery meets the requirements of Battery Directives, and the battery parts are RoHS-Compliant.

- Battery visible surface to be free from scratches, marks and foreign substances
- Production code printed according to WWYY
- Battery label has to be printed by Thermal transfer printer

1	S013/08	Change Cycles Life in electrical specification 80% instead of 70% of initial cap	2008-08-26	Didit
0	L042/08	Refer to preliminary drawing #P26-10084 rev. 000	2008-07-09	Didit
No	AO No	Revisions	2	Date Name
Customer:		Material: Refer to part list #700748	Description: 1/LIC 18650-22 L PCM S W with PCM, sleeve and wires	
Projection:				
Dimensions in mm		Prepared & Checked	Verified & Approved	Dwg. No: 700748 4 0 1
Tolerance: ISO 2768-m		2008-06-12	Didit	
Scale: Not to scale				VKB Order No: 56622 201 013