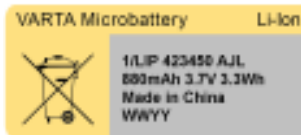
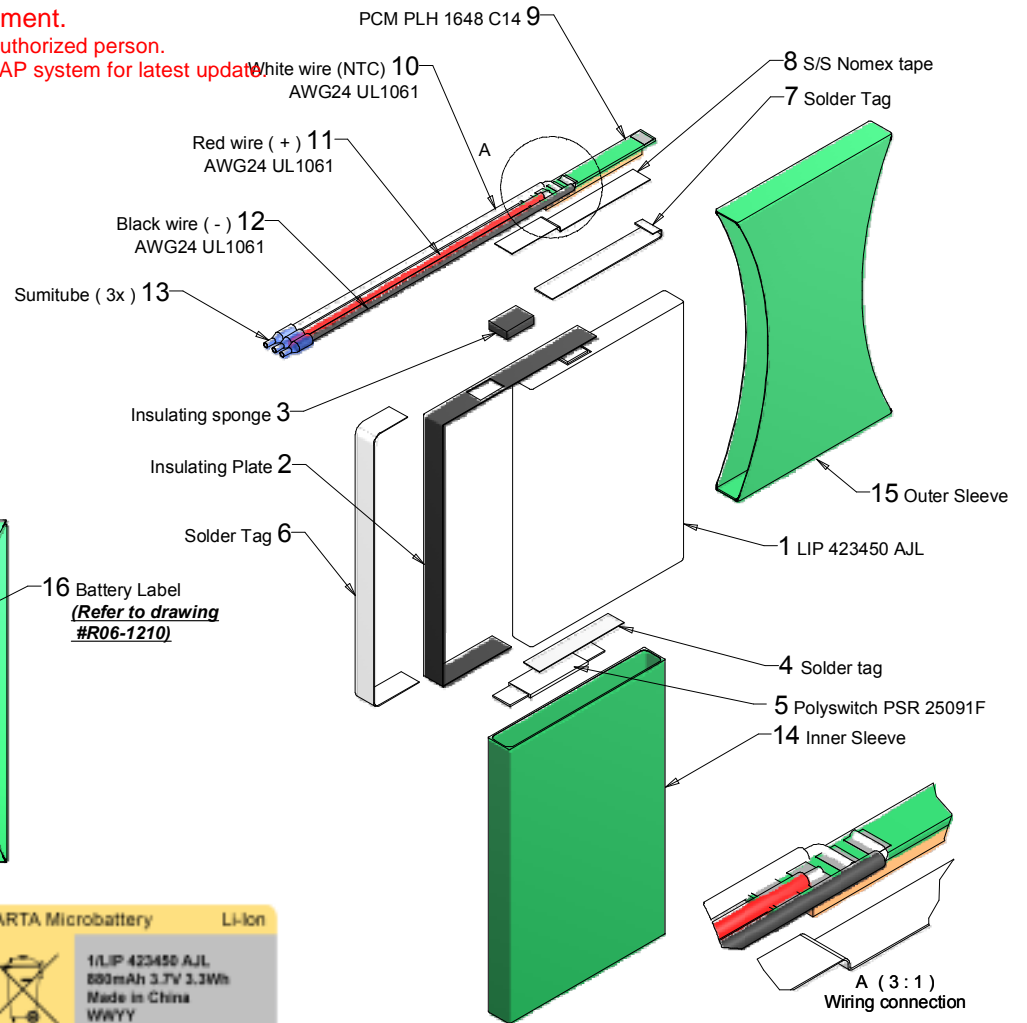
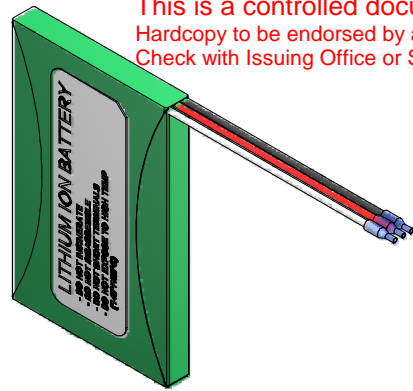
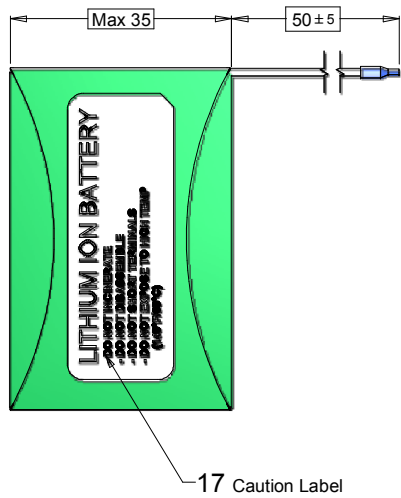
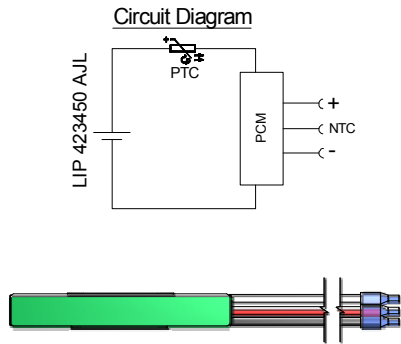


This is a controlled document.
 Hardcopy to be endorsed by authorized person.
 Check with Issuing Office or SAP system for latest update



[View Label](#)

- Battery visible surface to be free from scratches, marks and foreign substances
- Production code printed according to WWYY
- Battery label has to be printed by Thermal transfer printer

Specification

1. General:
 Battery Pack in shrink sleeve incl. safety circuit and wires
 Cell Type: LIP 423450 AJL
 PCM: PLH -1648 -C14
 NTC: 10kΩ ±1%, B -Value 3435K ±1%
 PTC:PSR 25091F
 ID:None
 Configuration: 1S
 Weight: appr. 25g

2. Electrical Specification:
 Rated Capacity: 850mAh min, 880mAh typical
 Nominal Voltage: 3.7V
 Watt-hour rating : 3.3 Wh
 Charging Method: Constant Current + Constant Voltage
 Max. Charge Voltage [V]: 4.20(±50mV)
 Max. Continuous Charge Current: 850mA (limited by cell DS)
 Rec. Charge cut off: 17mA or timer 3h
 Max. Continuous Discharge Current: 850mA (limited by cell DS)
 Rec. Discharge cut off: 3.0V
 Internal Impedance: approx.130mΩ
 Exp. Cycle Life: 400 cycles> 60% of initial cap. (1C/1C)

Cell protection
 Overcharge Detection: 4.300V ± 20mV
 (0.8 to 1.2sec. delay, resume 4.100V ± 30mV)
 Overdischarge Detection: 2.400V ± 35mV
 (76.8 to 115.2msec. delay, resume 2.400V ± 50mV/-35mV)
 Over current detection: 4.0A to 7.0A (9.6 to 14.4 msec.delay)

3. Ambient Conditions
 Temperature Range
 - Charge: 0 to +45°C
 - Discharge: -20 to +45°C
 - Storage: 1 year at -20 to 20°C
 3 months at 20 to 45°C

-Humidity: 65 ± 20%RH

4. Environmental and Safety
 Please follow VARTA Handling and Safety
 Precautions for Lilon & LiPolymer
 The cell is approved according UL 1642.
 This battery meets the requirements of Battery Directives,
 and the battery parts are RoHS-Compliant.

These dimensions are considered inspectable

No	AO No	Revisions	Date	Name
1	V077/08	Update electrical specification & dimension length of battery to Max 54.5 was Max 54	2008-08-27	Sony
0	L038/08	Refer to preliminary drawing #P26-10087 rev. 001	2008-07-08	Sony

Customer:		Material: Refer to part list #700746		Description: 1/LIP 423450 AJL PCM S W with PCM, sleeve and wire	
Projection:		Dimensions in mm		Dwg. No: 700746	
		Tolerance: ISO 2768-m		KVB Order No: 56424 201 012	
		Scale: Not to scale			

Rights reserved to make technical changes, as a result of further development, without notice. This drawing is the property of VARTA Microbattery and must not be copied or disclosed to a third party without the written consent of VARTA Microbattery.

