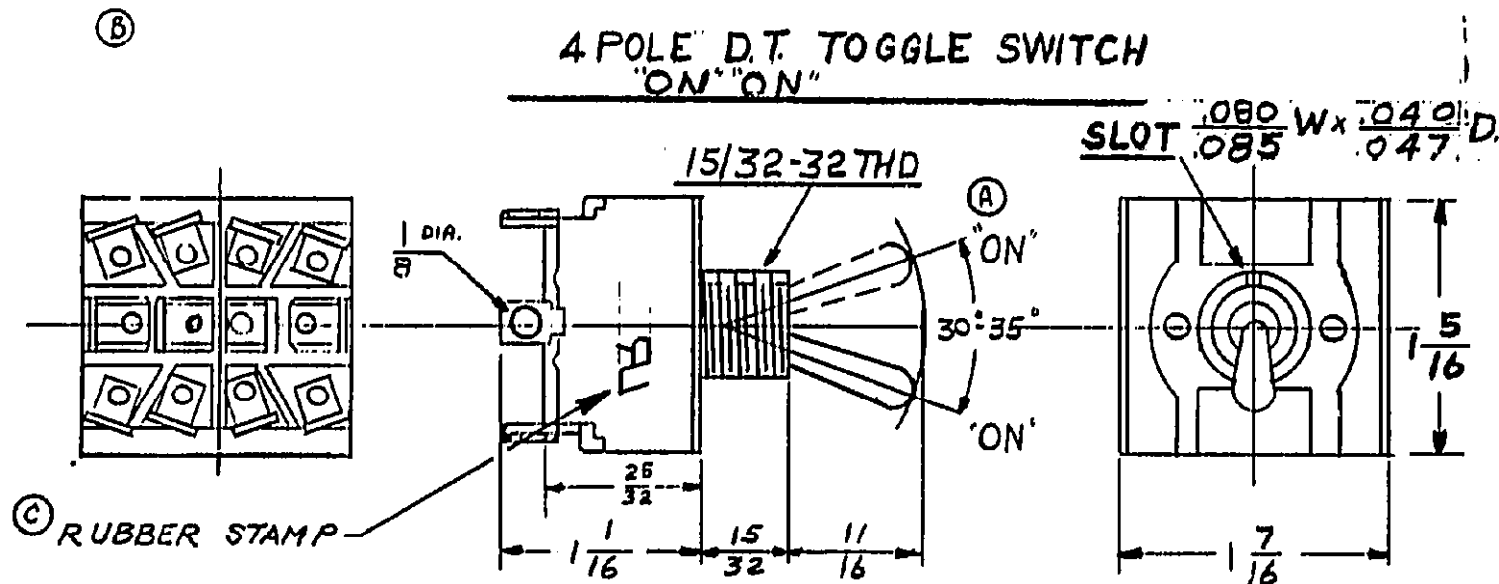


10-10633		DESCRIPTION <b>SWITCH LAYOUT</b>		82636		THE ARROW-HARTY & HEGEMAN ELECTRIC CO. HARTFORD, CONN.	
DRAWN BY <b>QSS</b>		MATERIAL					
SCALE <b>FULL</b>		6-3-60	(A) INDICATIONS ADDED	10-26-87	(C) ECN 8701921	7-18-90	(E) ECN C0045-14
CHECKED BY		6-27-68	(D) WAS 115-230V.A.C.	4-4-90	(F) ECN C0045-04	↓	(G) 1 H.P. WAS 1/2 HP
DATE <b>2-7-58</b>		10-26-87	(H) "A" STAMP ADDED	4-4-90	(I) ALL 20A Rating	↓	○

APP. FOR 10A. 250V. A.C., 20A. 125VAC (D)  
1 H.P. 120-240V. A.C. 2-3 PH. (E)



ON POSITION SHOWN