

NOTES: UNLESS OTHERWISE SPECIFIED

1. MATERIAL:

HOUSING: THERMOPLASTIC; BLACK  
SEAL: SILICONE RUBBER

2. MODIFICATIONS: BACKSHELL RING ADAPTER (BRA);  
STANDARD DIA. WIRE SEAL.

3. SPECIFICATIONS:

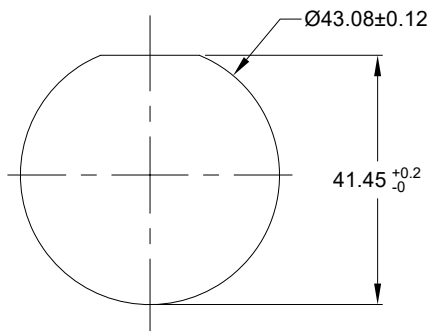
- 3.1 OPERATING TEMPERATURE: -55°C TO +125°C.  
3.2 DIELECTRIC WITHSTANDING VOLTAGE: LESS THAN 2  
MILLIAMPS CURRENT LEAKAGE @ 1500 VOLTS AC.  
3.3 INSULATION RESISTANCE: 1000 MEGOHM MIN @ 25°C.  
3.4 MOISTURE RESISTANCE:  
IP68(IM OF WATER FOR A PERIOD OF 24 HOURS,MATED  
CONDITION);  
IP69K (MATED CONDITION)  
3.5 MATING CYCLE DURABILITY: 100 CYCLES  
3.6 RoHS COMPLIANT

4. MATING PART: AHDP06-24-07S\* ( \* = SEAL TYPE ) (CL22 OPTION)

5. ALL DIMENSIONS ARE FOR REFERENCE USE ONLY.

6. CONTACT SIZE AND WIRE RANGE:

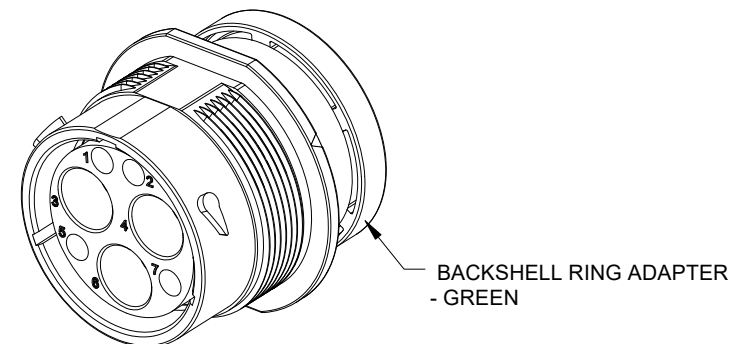
| CONTACT SIZE | MIN. INSUL O.D.   | MAX. INSUL O.D.    | TYPICAL WIRE RANGE                  | CURRENT RATING |
|--------------|-------------------|--------------------|-------------------------------------|----------------|
| 4            | 7.90 mm (.311 in) | 10.67 mm (.420 in) | 4 AWG (25.0-21.0mm <sup>2</sup> )   | 100 AMPS       |
| 16           | 2.54 mm (.100 in) | 3.40 mm (.134 in)  | 14-20 AWG (2.0-0.5mm <sup>2</sup> ) | 13 AMPS        |




RECOMMENDED PANEL  
MOUNTING HOLE

RECOMMENDED PANEL  
THICKNESS:1.6 TO 4.7MM

| REVISIONS |     |                     |         |      |       |
|-----------|-----|---------------------|---------|------|-------|
| REV       | ECO | DESCRIPTION         | DATE    | BY   | APPR  |
| A1        | -   | RELEASE NEW DRAWING | 21FEB20 | VITO | TOMMY |



|   |             |  |         |
|---|-------------|--|---------|
| AHDP04-24-07PN-BRACL22  |             |  |         |
| QUANTITY  | PART NUMBER | DESCRIPTION  | ITEM    |
| MATERIALS LIST  |             |  |         |
| UNLESS OTHERWISE SPECIFIED  |             | SIGNATURES   | DATE    |
| 1) All dimensions are in metric(mm).  |             | DRAWN: VITOLJ  | 21FEB20 |
| 2) Tolerances are as follows:   |             | CHECKED: SULLENZHWG  | 22FEB20 |
| 1 PL DEC ±0.30 Fractions ±1/64  |             | ENGINEER:  |         |
| 2 PL DEC ±0.15 Angles ±1°   |             | APPROVAL: TOMMY XIE  | 23FEB20 |
| 3) Note reference =  |             | CUSTOMER:  |         |
| MATERIAL SPECIFICATIONS:  |             | THIS DRAWING IS SUPPLIED FOR INFORMATION ONLY. DESIGN FEATURES, SPECIFICATIONS AND PERFORMANCE DATA SHOWN HEREON ARE THE PROPERTY OF THE AMPHENOL CORPORATION. NO RIGHTS OF REPRODUCTION ARE IMPLIED. ALL DIMENSIONS ARE SUBJECT TO NORMAL MANUFACTURING VARIATIONS. |         |
| WEIGHT: 55.3g   |             |  |         |
| PROCESS SPECIFICATIONS:   |             |  |         |
| NEXT ASSY:  |             |  |         |
|   |             | 7POS, RECEPTACLE, PIN, SIZE 24, NORMAL SEAL, BRA, CL22, DURAMATE AHD   |         |
|   |             | Sine Systems - www.amphenol-sine.com<br>44724 Morley Drive<br>Clinton Township, MI 48036   |         |
|   |             | Amphenol   |         |
|   |             | SIZE TYPE DWG NO. REVISION   |         |
|   |             | B C- AHDP04-24-07PN-BRACL22 A1   |         |
|   |             | SCALE: NONE DURAMATE SHEET 1 OF 1  |         |

7. RECEPTACLE IS SUPPLIED WITH DUST CAP.

TITLE: 7POS, RECEPTACLE, PIN, SIZE 24, NORMAL SEAL, BRA, CL22, DURAMATE AHD

DWG NO:

AHDP04-24-07PN-BRACL22

REV: A1

SH: 1

OF: 1