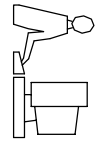
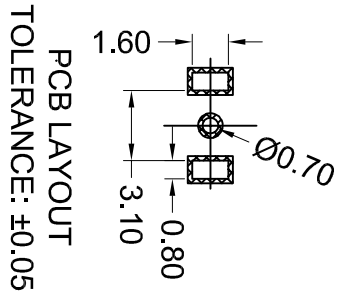
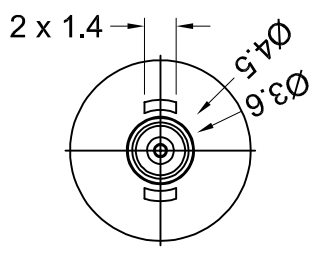
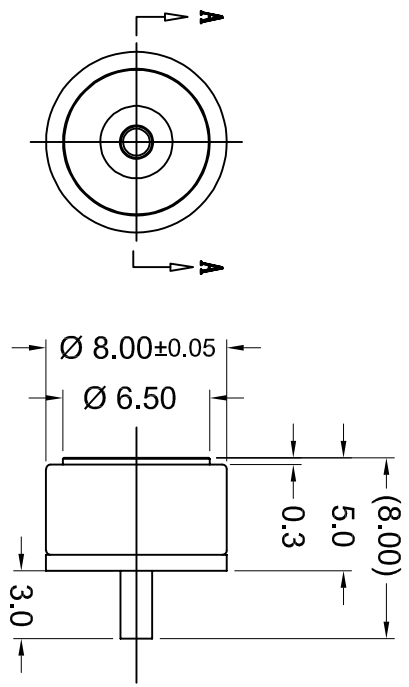


TOLERANCE UNLESS OTHERWISE SPECIFIED	
.X	±0.15
.XX	±0.10

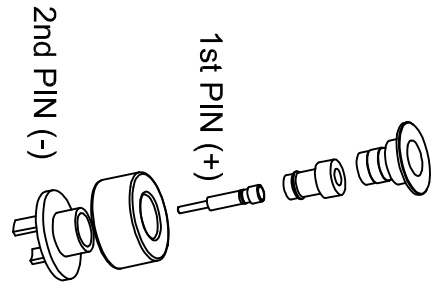
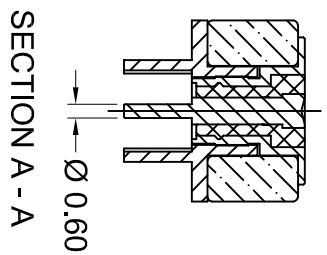
THIS IS A C.A.D. GENERATED DRAWING
DO NOT MAKE MANUAL REVISIONS TO MASTER.



ISSUE NUMBER	1
ORIGINAL	



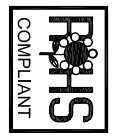
PCB LAYOUT
TOLERANCE: ±0.05



- SPECIFICATION:**
- 1. PLATING:**
 1) POWER PIN: H59, 5µ" Au OVER 50-120µ" Ni
 2) HOUSING: PA46, BLACK
 3) MAGNET: N52
- 2. VOLTAGE RATING: 12V**
- 3. CURRENT RATING: 2A**
- 4. INSULATION RESISTANCE: 100MOHM MIN**
- 5. DIELECTRIC WITHSTANDING VOLTAGE: 100V AT 60HZ**
- 6. CONTACT RESISTANCE: 30MOHM MAX BEFORE TEST AND 60m OHM MAX AFTER TEST AT POGO PIN WORKING STROKE**
- 7. RECOMMENDED WORKING STROKE & FORCE:
 STROKE 1.1mm (PER CONTACT); 80±20gF**
- 8. MECHANICAL LIFE: 10,000 CYCLES MIN**
- 9. WORKING TEMPERATURE RANGE: -30°C TO +85°C**
- 10. MAGNET GAUSE VALUE: 2400 ±200GS**

POGO CONNECTOR, 2 POS, FEMALE

ACAD REFERENCE NO.: M00-PG0-206-103		UNIT: MM
DRAWN: E.S	DATE: JUN.17/2022	
CHECKED: R.S.M.	DATE: JUN.17/2022	
SCALE: (IN C.A.D. 1:1)	SHEET 1 OF 1	ISSUE 1
DRAWING NUMBER: M00-PG0-206-103		
PART NUMBER: M00-PG0-206-103		



THIS SERIES FULLY CONFORMS TO
THE EUROPEAN UNION DIRECTIVES
2011/65/EU FOR ROHS COMPLIANCY.



EDAC INC
TORONTO, ONTARIO
CANADA

THESE DRAWINGS AND SPECIFICATIONS
ARE THE PROPERTY OF EDAC INC. AND
SHALL NOT BE REPRODUCED OR COPIED
OR USED AS THE BASIS FOR THE
MANUFACTURE OR SALE OF APPARATUS
WITHOUT WRITTEN PERMISSION.

YOUR CONNECTION TO QUALITY & SERVICE