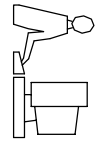
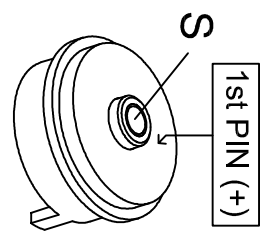
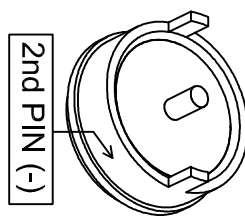
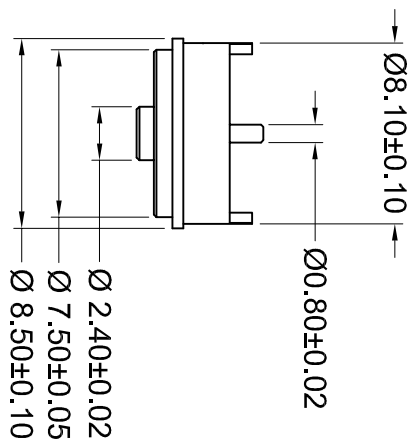


TOLERANCE UNLESS OTHERWISE SPECIFIED	
.X	±0.15
.XX	±0.10

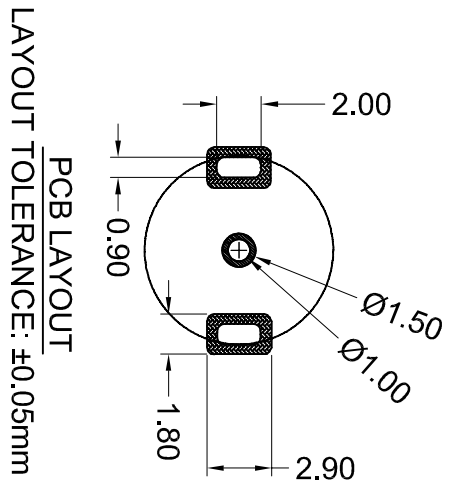
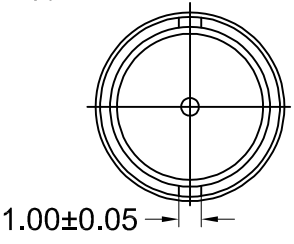
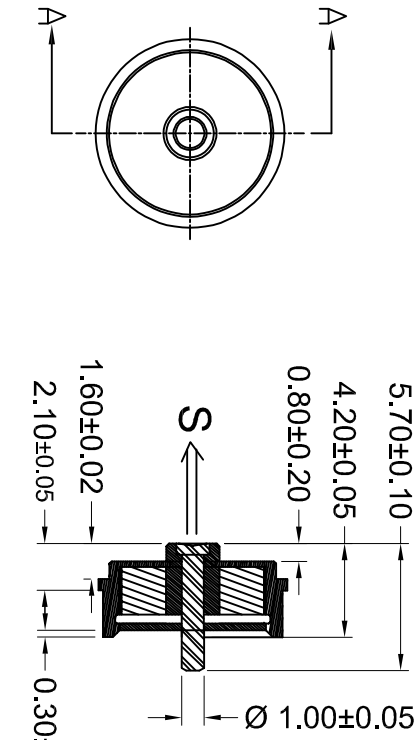
THIS IS A C.A.D. GENERATED DRAWING  
DO NOT MAKE MANUAL REVISIONS TO MASTER.



ISSUE NUMBER	1
ORIGINAL	



**SPECIFICATION:**  
**CONTACT: BRASS**  
**PLATING: Ni 50µ"-120µ", Au 3µ" MIN**  
**INSULATION: PA46 +30%GF**  
**MAGNET: N52 PULL 3-3.5N**  
**VOLTAGE RATING: 5V**  
**CURRENT RATING: 2A MAX**  
**WORKING TEMPERATURE RANGE: -30°C TO 85°C**



THIS SERIES FULLY CONFORMS TO  
THE EUROPEAN UNION DIRECTIVES  
2011/65/EU FOR ROHS COMPLIANCY.

**POGO CONNECTOR, 2 POS, FEMALE**

EDAC INC TORONTO, ONTARIO CANADA		ACAD REFERENCE NO.: M00-PG0-202-104		UNIT: MM
YOUR CONNECTION TO QUALITY & SERVICE		DRAWN: E.S.	DATE: JUN 21/2022	
THESE DRAWINGS AND SPECIFICATIONS ARE THE PROPERTY OF EDAC INC. AND SHALL NOT BE REPRODUCED OR COPIED OR USED AS THE BASIS FOR THE MANUFACTURE OR SALE OF APPARATUS WITHOUT WRITTEN PERMISSION.		CHECKED: R.S.M.	DATE: JUN 21/2022	
		SCALE: (IN C.A.D. 1:1)	SHEET 1 OF 1	ISSUE 1
		DRAWING NUMBER: M00-PG0-202-104		
		PART NUMBER: M00-PG0-202-104		