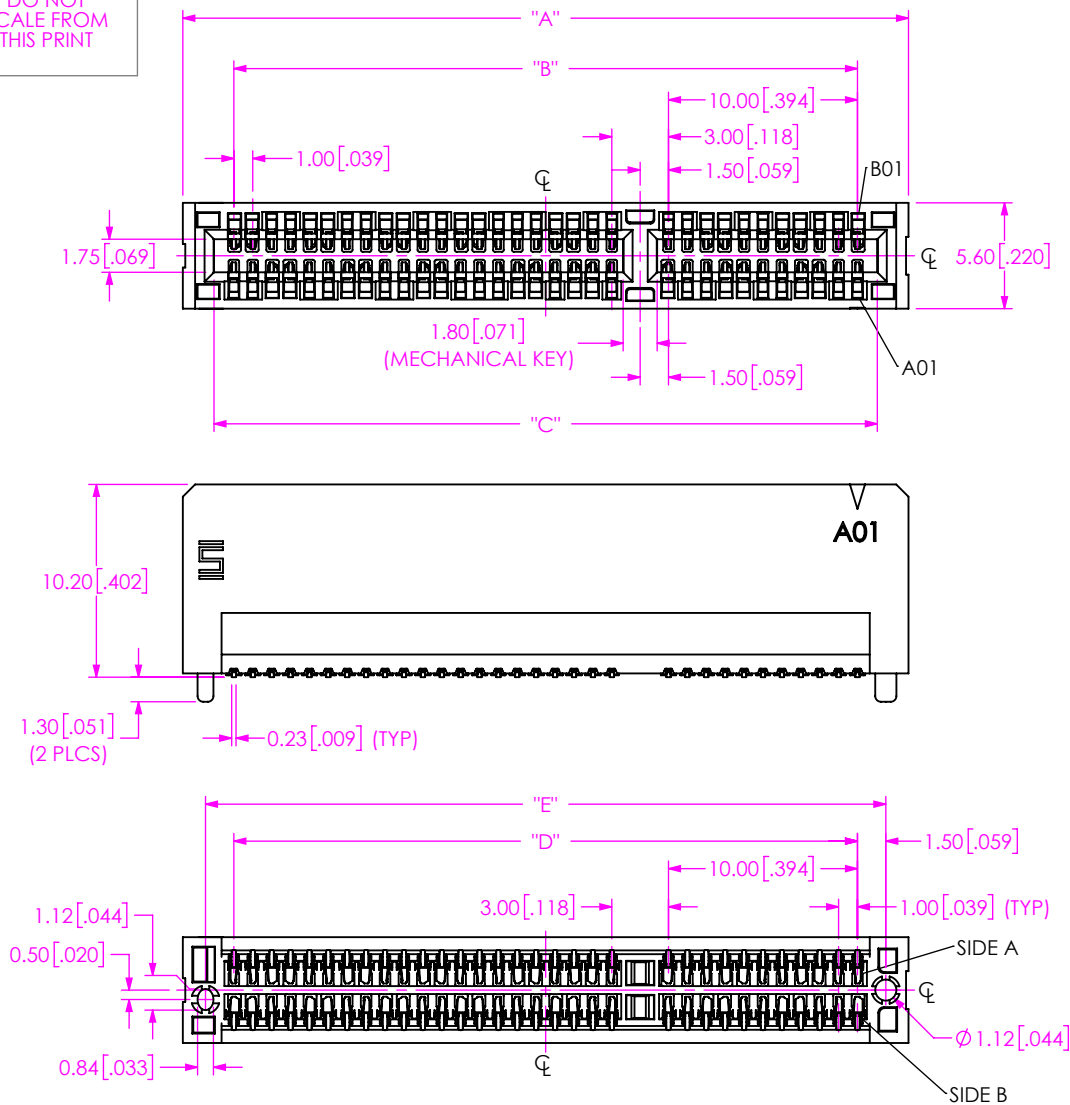


DO NOT  
SCALE FROM  
THIS PRINT

## NOTES:

1. ORDERS WILL BE PACKAGED ACCORDING TO THE SAMTEC PACKAGING EFFICIENCY STANDARDS (SPES) FOUND ON WWW.SAMTEC.COM.
2. ATTACH LABEL -4x2 TO EACH REEL.
3. -01, -04 & -08 LANES PARTS TO BE PACKAGED IN TAPE & REEL, -16 LANES PARTS TO BE PACKAGED IN TRAY.
4. K-DOT PROVIDED AS STANDARD.
5. NOTE DELETED.

## PCIE-G5-XX-XX-X-DP-A-XX-XX

No OF LANES  
-01, -04, -08, -16CARD THICKNESS  
-01: 1.57mm (.062") CARD

## PLATING SPECIFICATION

-F: 3μ" SELECTIVE GOLD IN CONTACT AREA, MATTE TIN ON TAIL  
 -L: 10μ" SELECTIVE GOLD IN CONTACT AREA, MATTE TIN ON TAIL  
 -S: 30μ" SELECTIVE GOLD IN CONTACT AREA, MATTE TIN ON TAIL

## PACKAGING

BLANK: TRAY (SEE NOTE 3)  
 -TR: TAPE & REEL (SEE NOTES 1, 2 & 3)  
 -FR: FULL REEL QTY TAPE & REEL (SEE NOTES 1, 2 & 3)

## OPTION

-WT: WELD TABS

## ALIGNMENT PIN

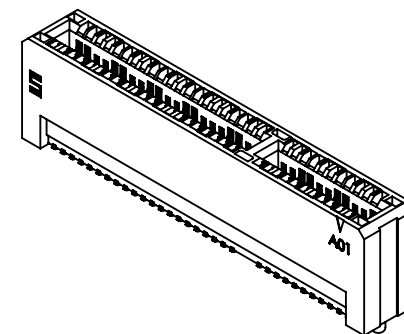
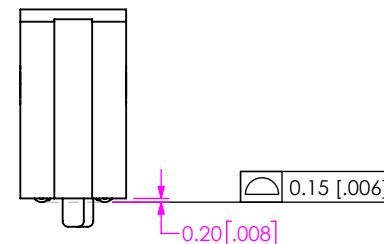


TABLE 1

No OF LANES	"A"	"B"	"C"	"D"	"E"
-01	24.40 [.961]	19.00 [.748]	21.10 [.831]	19.00 [.748]	22.00 [.866]
-04	38.40 [1.512]	33.00 [1.299]	35.10 [1.382]	33.00 [1.299]	36.00 [1.417]
-08	55.40 [2.181]	50.00 [1.969]	52.10 [2.051]	50.00 [1.969]	53.00 [2.087]
-16	88.40 [3.480]	83.00 [3.268]	85.10 [3.350]	83.00 [3.268]	86.00 [3.386]

## \* PROPRIETARY NOTE \*

THIS DOCUMENT CONTAINS CONFIDENTIAL AND PROPRIETARY INFORMATION AND ALL DESIGN, MANUFACTURING, REPRODUCTION, USE, PATENT RIGHTS AND SALES RIGHTS ARE EXPRESSLY RESERVED BY SAMTEC, INC. THIS DOCUMENT SHALL NOT BE DISCLOSED, IN WHOLE OR PART, TO ANY UNAUTHORIZED PERSON OR ENTITY NOR REPRODUCED, TRANSFERRED OR INCORPORATED IN ANY OTHER PROJECT IN ANY MANNER WITHOUT THE EXPRESS WRITTEN CONSENT OF SAMTEC, INC.

MATERIAL:  
 INSULATOR: LCP  
 CONTACT: COPPER ALLOY

DO NOT SCALE DRAWING  
 SHEET SCALE: 2.5:1

**samtec**

520 PARK EAST BLVD, NEW ALBANY, IN 47150  
 PHONE: 812-944-6733 FAX: 812-948-5047  
 e-Mail: info@SAMTEC.com code 55322

## DESCRIPTION:

PCIE-G5 ASSEMBLY

## DWG. NO.

PCIE-G5-XX-XX-X-DP-A-XX-XX

BY: JERRY SU

10/09/2018

SHEET 1 OF 3

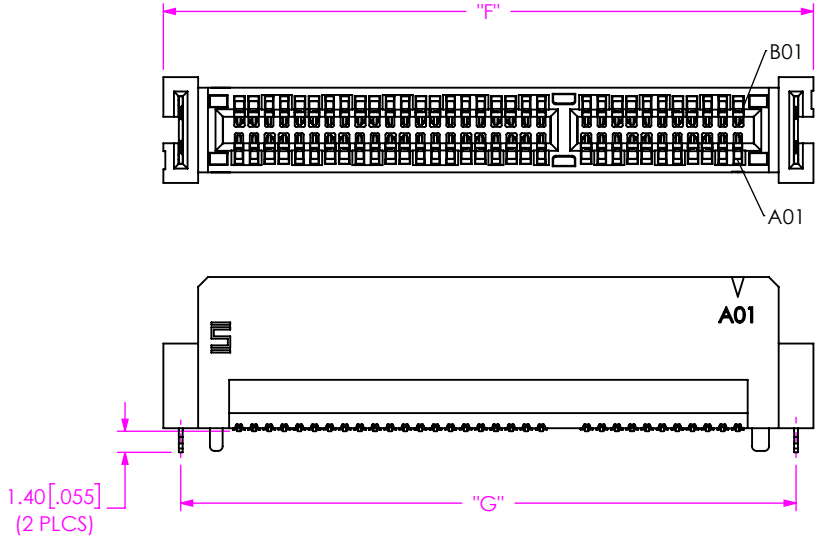


FIG 2  
PCIE-G5-04-01-X-DP-A-WT SHOWN  
(DIFFERENT AS SHOWN, OTHERWISE SAME AS FIG 1)

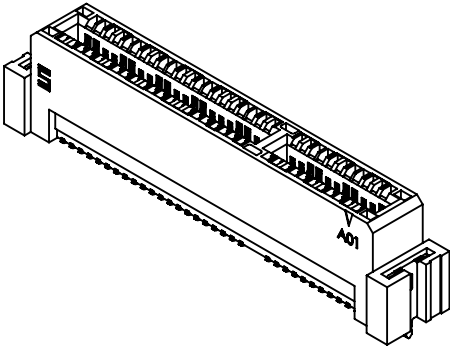
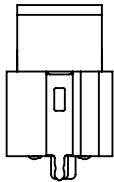


TABLE 3		
No. OF LANES	"F"	"G"
-01	29.00 [1.142]	26.70 [1.051]
-04	43.00 [1.693]	40.70 [1.602]
-08	60.00 [2.362]	57.70 [2.272]
-16	93.00 [3.661]	90.70 [3.571]

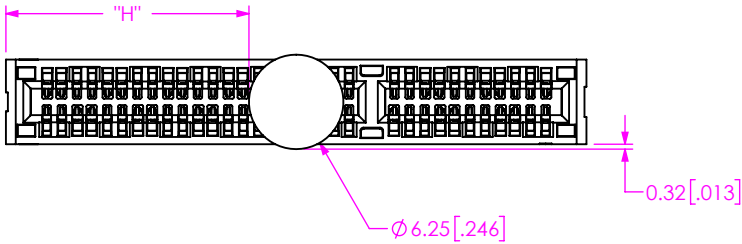


FIG 3  
PCIE-G5-04-01-X-DP-A SHOWN  
(SEE NOTE 4)

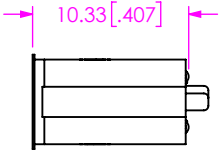


TABLE 4		
OPTION	No OF LANES	"H"
NONE	-01	("A" - 6.25[.246]) / 2
	-04	("A" - 6.25[.246]) / 2
	-08	("A" - 6.25[.246]) / 2
	-16	("A" - 6.25[.246]) / 2
-WT	-01	("F" - 6.25[.246]) / 2
	-04	("F" - 6.25[.246]) / 2
	-08	("F" - 6.25[.246]) / 2
	-16	("F" - 6.25[.246]) / 2

• PROPRIETARY NOTE •  
THIS DOCUMENT CONTAINS CONFIDENTIAL AND PROPRIETARY INFORMATION AND ALL DESIGN, MANUFACTURING, REPRODUCTION, USE, PATENT RIGHTS AND SALES RIGHTS ARE EXPRESSLY RESERVED BY SAMTEC, INC. THIS DOCUMENT SHALL NOT BE DISCLOSED, IN WHOLE OR PART, TO ANY UNAUTHORIZED PERSON OR ENTITY NOR REPRODUCED, TRANSFERRED OR INCORPORATED IN ANY OTHER PROJECT IN ANY MANNER WITHOUT THE EXPRESS WRITTEN CONSENT OF SAMTEC, INC.

DO NOT SCALE DRAWING  
  
SHEET SCALE: 1:2



520 PARK EAST BLVD, NEW ALBANY, IN 47150  
PHONE: 812-944-6733 FAX: 812-948-5047  
e-Mail info@SAMTEC.com code 55322

DESCRIPTION: PCIE-G5 ASSEMBLY  
DWG. NO. PCIE-G5-XX-XX-X-DP-A-XX-XX  
BY: JERRY SU 10/09/2018 SHEET 2 OF 3

No OF LANES = 01

No OF LANES = 04

No OF LANES = 08

No OF LANES = 16

TABLE 5

SIDE B				SIDE A			
NAME	DESCRIPTION	TYPE		NAME	DESCRIPTION	TYPE	
1	+12V	12 V power	S-R	PRSENT1#	Hot-plug detect	G-R	
2	+12V	12 V power	G-L	+12V	12 V power	G-L	
3	+12V	12 V power	G-R	+12V	12 V power	S-R	
4	GND	GROUND	S-L	GND	GROUND	S-L	
5	SMCLK	SM Bus Clock	S-R	JTAG2	TCK (test clock)	G-R	
6	SMDATA	SM Bus Data	G-L	JTAG3	TDI (test input data)	G-L	
7	GND	GROUND	G-R	JTAG4	TDO (test data output)	S-R	
8	+3.3V	3.3 V power	S-L	JTAG5	TMS (test mode select)	S-L	
9	JTAG1	TRST# (test reset)	S-R	+3.3V	3.3 V power	G-R	
10	+3.3V aux	3.3 V aux power	G-L	+3.3V	3.3 V power	G-L	
11	WAKE#	Signal for link	G-R	PERS1#	Fundamental reset	S-R	
MECHANICAL KEY							
12	RSVD	RESERVED	G-L	GND	GROUND	G-L	
13	GND	GROUND	G-R	REFCLK+	Reference clock	S-R	
14	PETp0	Transmitter, DP	S-L	REFCLK-	Diff pair	S-L	
15	PETn0	LANE 0	S-R	GND	GROUND	G-L	
16	GND	GROUND	G-L	PERp0	Receiver, DP	S-R	
17	PRSENT2#	Hot-plug detect	G-R	PERn0	LANE 0	S-L	
18	GND	GROUND	(SEE TABLE 7)	GND	GROUND	G-R	
END OF 01 CONNECTOR							
19	PETp1	Transmitter, DP	S-L	RSVD	RESERVED	G-R	
20	PETn1	LANE 1	S-R	GND	GROUND	G-L	
21	GND	GROUND	G-L	PERp1	Receiver, DP	S-R	
22	GND	GROUND	G-R	PERn1	LANE 1	S-L	
23	PETp2	Transmitter, DP	S-L	GND	GROUND	G-R	
24	PETn2	LANE 2	S-R	GND	GROUND	G-L	
25	GND	GROUND	G-L	PERp2	Receiver, DP	S-R	
26	GND	GROUND	G-R	PERn2	LANE 2	S-L	
27	PETp3	Transmitter, DP	S-L	GND	GROUND	G-R	
28	PETn3	LANE 3	S-R	GND	GROUND	G-L	
29	GND	GROUND	G-L	PERp3	Receiver, DP	S-R	
30	RSVD	RESERVED	G-R	PERn3	LANE 3	S-L	
31	PRSENT2#	Hot-plug detect	(SEE TABLE 7)	GND	GROUND	G-R	
32	GND	GROUND	(SEE TABLE 7)	RSVD	RESERVED	G-L	
END OF 04 CONNECTOR							
33	PETp4	Transmitter, DP	S-L	RSVD	RESERVED	G-R	
34	PETn4	LANE 4	S-R	GND	GROUND	G-L	
35	GND	GROUND	G-L	PERp4	Receiver, DP	S-R	
36	GND	GROUND	G-R	PERn4	LANE 4	S-L	
37	PETp5	Transmitter, DP	S-L	GND	GROUND	G-R	
38	PETn5	LANE 5	S-R	GND	GROUND	G-L	
39	GND	GROUND	G-L	PERp5	Receiver, DP	S-R	
40	GND	GROUND	G-R	PERn5	LANE 5	S-L	
41	PETp6	Transmitter, DP	S-L	GND	GROUND	G-R	
42	PETn6	LANE 6	S-R	GND	GROUND	G-L	
43	GND	GROUND	G-L	PERp6	Receiver, DP	S-R	
44	GND	GROUND	G-R	PERn6	LANE 6	S-L	
45	PETp7	Transmitter, DP	S-L	GND	GROUND	G-R	
46	PETn7	LANE 7	S-R	GND	GROUND	G-L	
47	GND	GROUND	G-L	PERp7	Receiver, DP	S-R	
48	PRSENT2#	Hot-plug detect	G-R	PERn7	LANE 7	S-L	
49	GND	GROUND	(SEE TABLE 7)	GND	GROUND	G-R	
END OF 08 CONNECTOR							
50	PETp8	Transmitter, DP	S-L	RSVD	RESERVED	G-R	
51	PETn8	LANE 8	S-R	GND	GROUND	G-L	
52	GND	GROUND	G-L	PERp8	Receiver, DP	S-R	
53	GND	GROUND	G-R	PERn8	LANE 8	S-L	
54	PETp9	Transmitter, DP	S-L	GND	GROUND	G-R	
55	PETn9	LANE 9	S-R	GND	GROUND	G-L	
56	GND	GROUND	G-L	PERp9	Receiver, DP	S-R	
57	GND	GROUND	G-R	PERn9	LANE 9	S-L	
58	PETp10	Transmitter, DP	S-L	GND	GROUND	G-R	
59	PETn10	LANE 10	S-R	GND	GROUND	G-L	
60	GND	GROUND	G-L	PERp10	Receiver, DP	S-R	
61	GND	GROUND	G-R	PERn10	LANE 10	S-L	
62	PETp11	Transmitter, DP	S-L	GND	GROUND	G-R	
63	PETn11	LANE 11	S-R	GND	GROUND	G-L	
64	GND	GROUND	G-L	PERp11	Receiver, DP	S-R	
65	GND	GROUND	G-R	PERn11	LANE 11	S-L	
66	PETp12	Transmitter, DP	S-L	GND	GROUND	G-R	
67	PETn12	LANE 12	S-R	GND	GROUND	G-L	
68	GND	GROUND	G-L	PERp12	Receiver, DP	S-R	
69	GND	GROUND	G-R	PERn12	LANE 12	S-L	
70	PETp13	Transmitter, DP	S-L	GND	GROUND	G-R	
71	PETn13	LANE 13	S-R	GND	GROUND	G-L	
72	GND	GROUND	G-L	PERp13	Receiver, DP	S-R	
73	GND	GROUND	G-R	PERn13	LANE 13	S-L	
74	PETp14	Transmitter, DP	S-L	GND	GROUND	G-R	
75	PETn14	LANE 14	S-R	GND	GROUND	G-L	
76	GND	GROUND	G-L	PERp14	Receiver, DP	S-R	
77	GND	GROUND	G-R	PERn14	LANE 14	S-L	
78	PETp15	Transmitter, DP	S-L	GND	GROUND	G-R	
79	PETn15	LANE 15	S-R	GND	GROUND	G-L	
80	GND	GROUND	G-L	PERp15	Receiver, DP	S-R	
81	PRSENT2#	Hot-plug detect	G-R	PERn15	LANE 15	S-L	
82	RSVD	RESERVED	S-L	GND	GROUND	G-R	
END OF 16 CONNECTOR							

c:\enterprisevault\DWG\MISC\MKTG\PCIE-G5-XX-XX-X-DP-A-XX-XX-MKT.SLDDRW

• PROPRIETARY NOTE •

THIS DOCUMENT CONTAINS CONFIDENTIAL AND PROPRIETARY INFORMATION AND ALL DESIGN, MANUFACTURING, REPRODUCTION, USE, PATENT RIGHTS AND SALES RIGHTS ARE EXPRESSLY RESERVED BY SAMTEC, INC. THIS DOCUMENT SHALL NOT BE DISCLOSED, IN WHOLE OR PART, TO ANY UNAUTHORIZED PERSON OR ENTITY NOR REPRODUCED, TRANSFERRED OR INCORPORATED IN ANY OTHER PROJECT IN ANY MANNER WITHOUT THE EXPRESS WRITTEN CONSENT OF SAMTEC, INC.

DO NOT SCALE DRAWING

SHEET SCALE: 1:2



520 PARK EAST BLVD, NEW ALBANY, IN 47150  
PHONE: 812-944-6733 FAX: 812-948-5047  
e-Mail: info@SAMTEC.com code 55322

DESCRIPTION: PCIE-G5 ASSEMBLY

DWG. NO. PCIE-G5-XX-XX-X-DP-A-XX-XX

BY: JERRY SU 10/09/2018 SHEET 3 OF 3