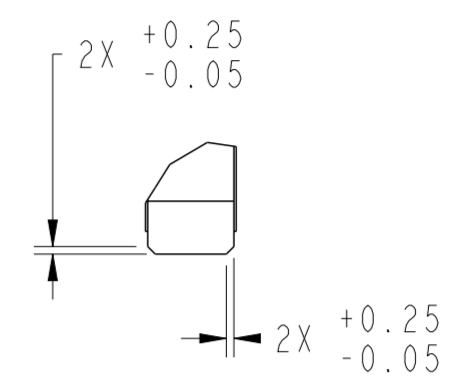
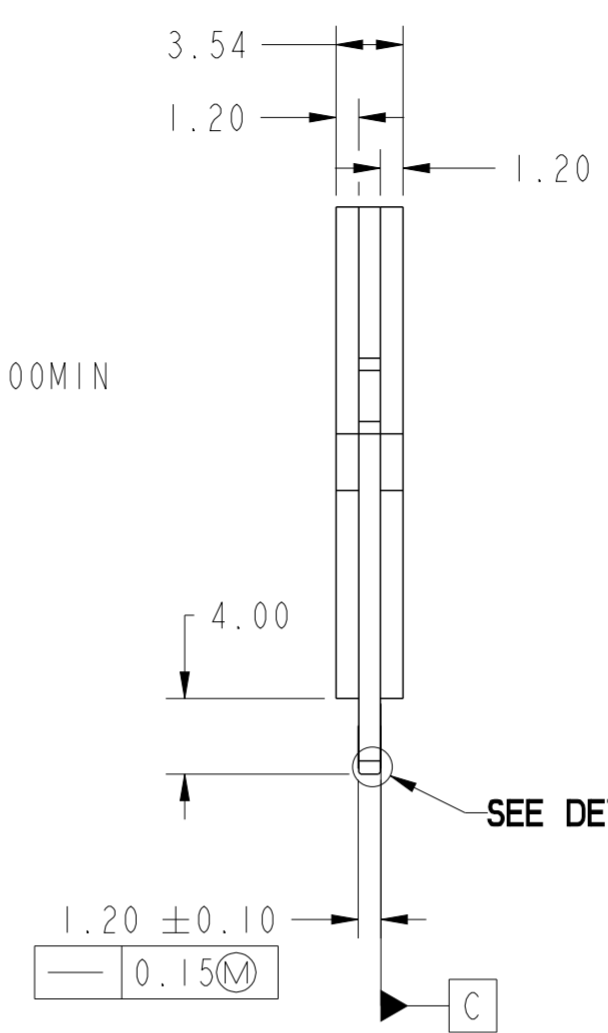
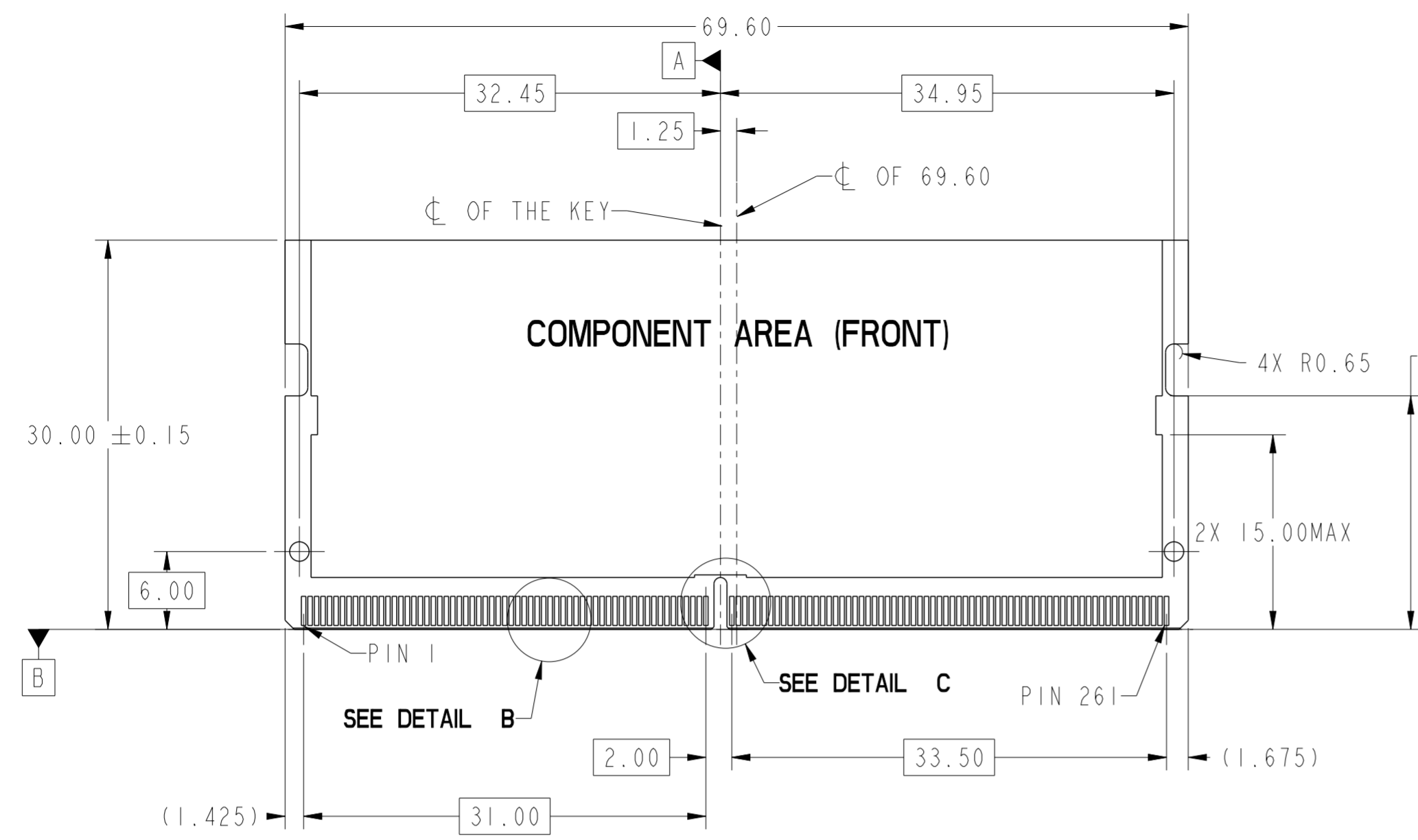


MATING/UNMATING VIEW

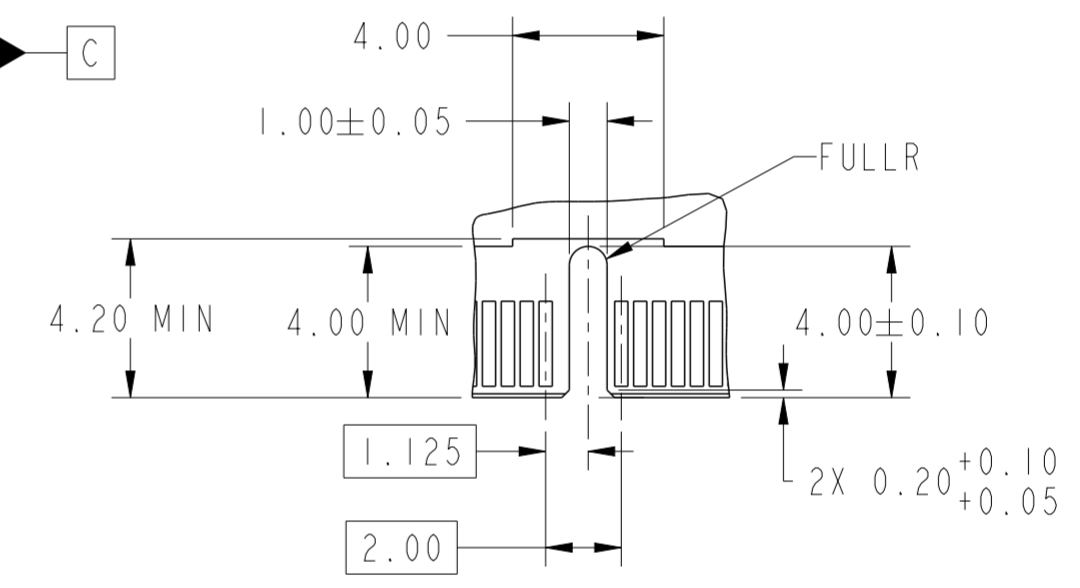
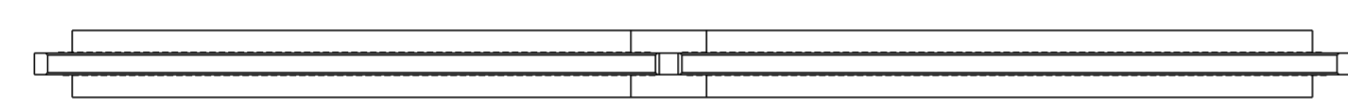
MATING: ① INSERTING (25°) → ② ROTATING → ③ FIXED  
 UNMATING: ④ UNFIXED → ⑤ ROTATING → ⑥ WITHDRAWING

PRELIMINARY

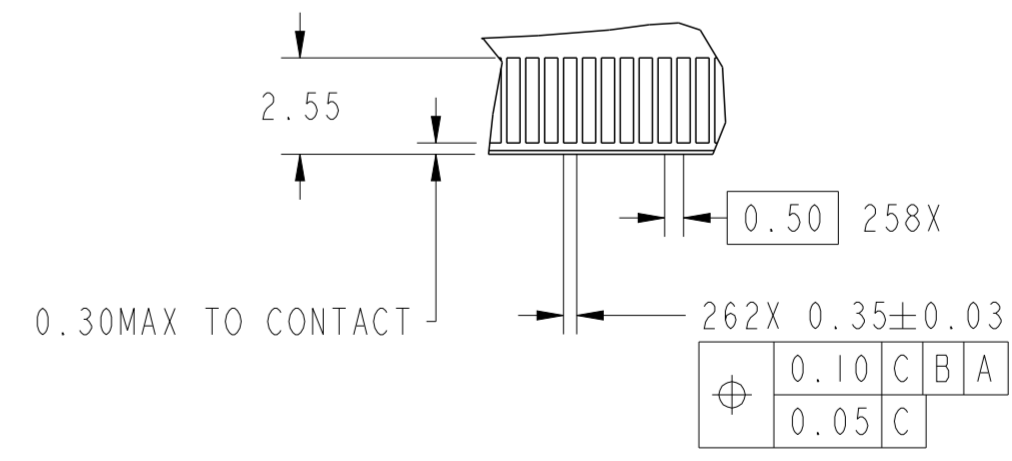
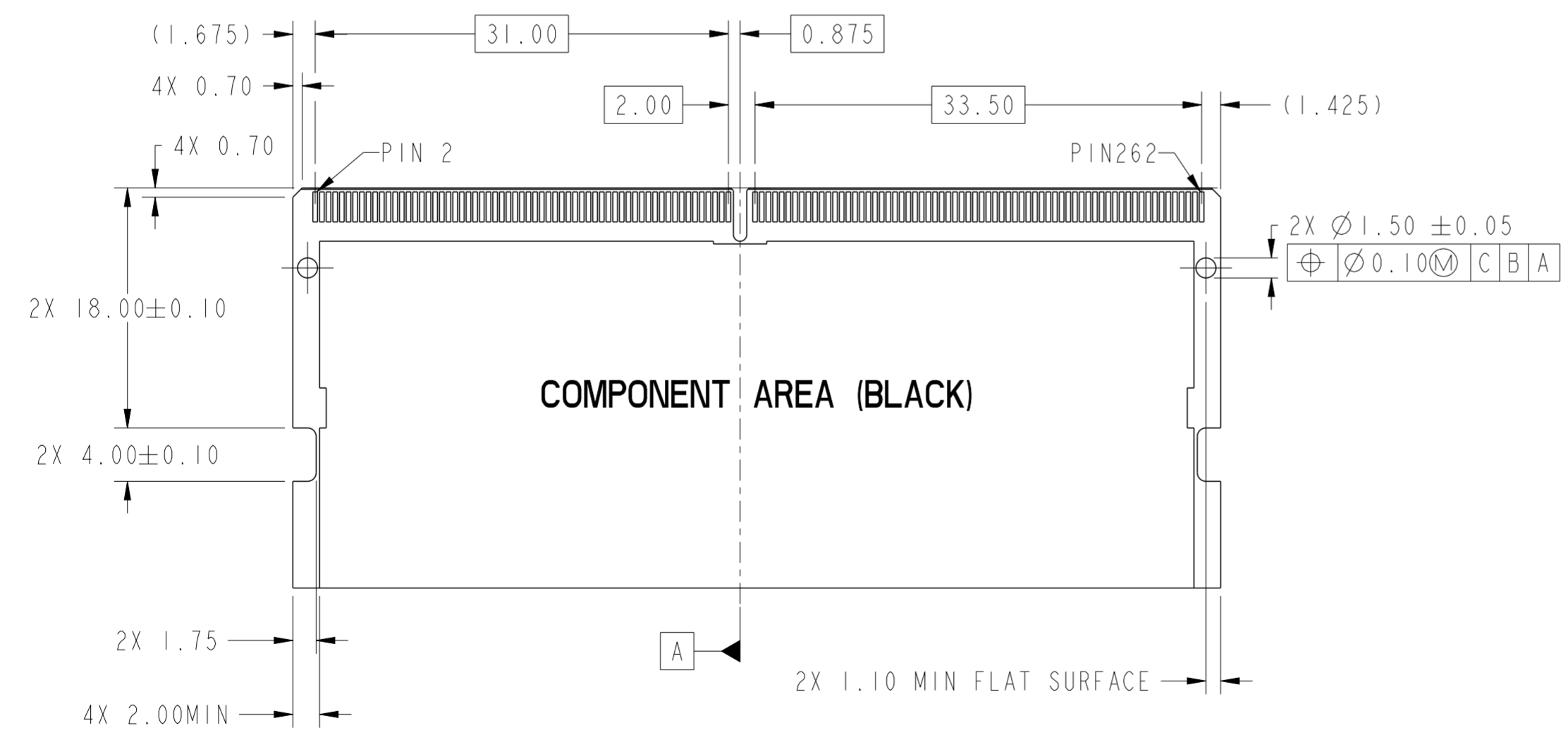
spec ref	dr	Ji-Lu Lu	2021/05/17	projection	MM	size	A2	scale	1:1	
tolerance std	eng	-	2021/05/25			ecn no	-	rel level	Preliminary	
ISO 406	chr	-	-							
ISO 1101	appr	-	-	product family	-	rel level	-	-	-	
surface	linear	0.X	$\pm 0.30$	Amphenol FCI	title	DDR5 SODIMM R/A 262PIN	dwg no	10157422	rev	1
ISO 1302	angular	0°	$\pm 2^\circ$	cat. no.	-	Product - Customer Drw	sheet 1 of 4	-	-	-



DETAIL A  
SCALE 10:1



DETAIL C  
SCALE 5:1



DETAIL B  
SCALE 5:1

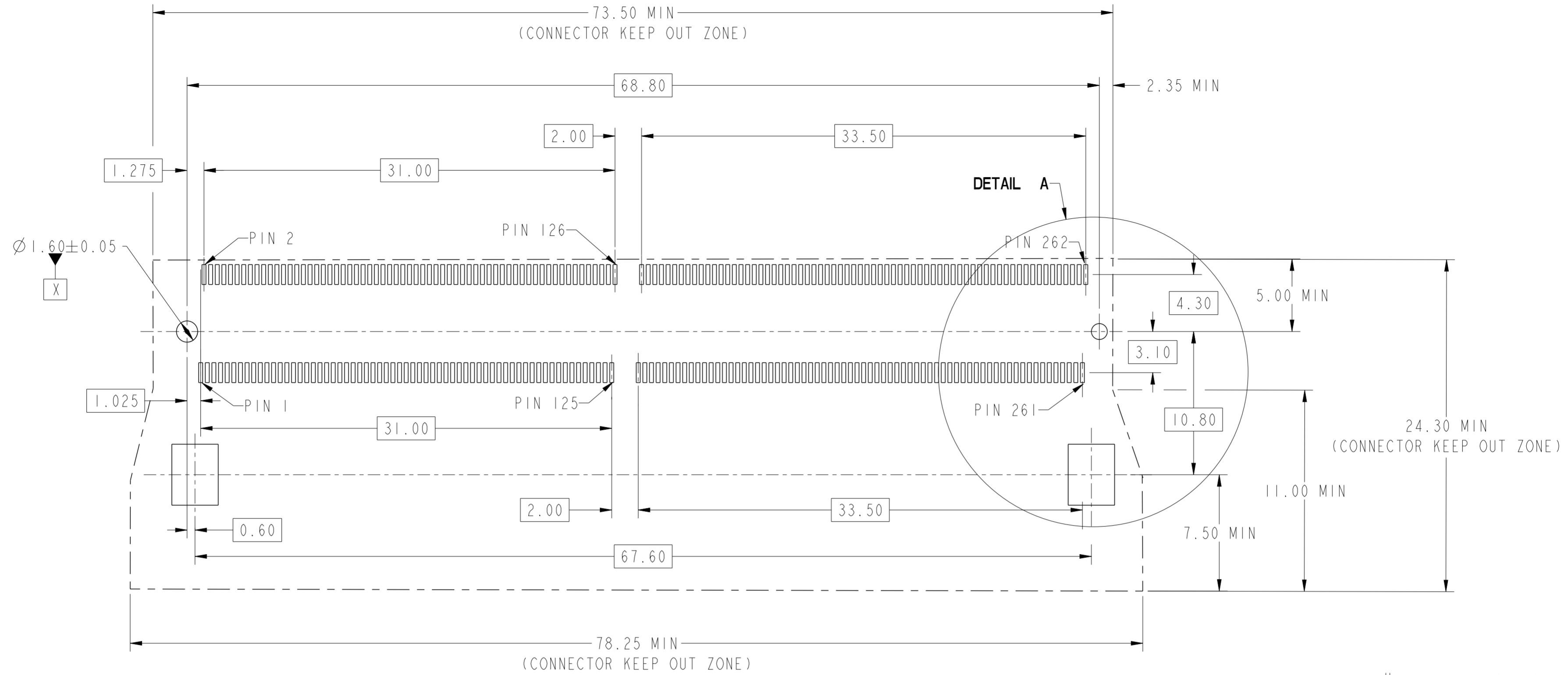
RECOMMEND CARD

PRELIMINARY

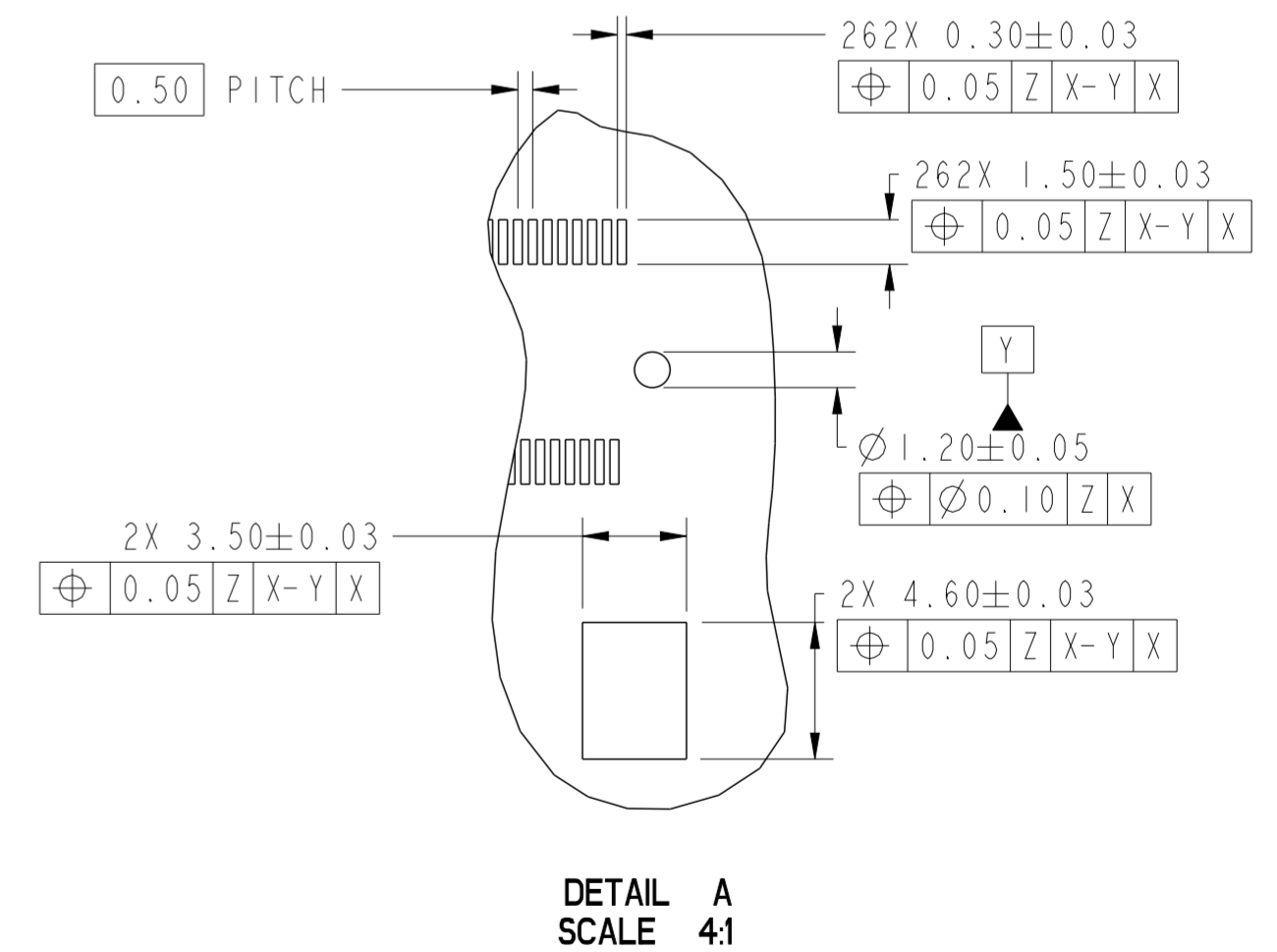
spec ref	dr	Ji-Lu	2021/05/17	projection	MM	size	A2	scale	1:1
tolerance std	eng	-	2021/05/25			ecn no	-	rel level	Preliminary
ISO 406 ISO 1101	chr	-	appr						
surface	linear	0.X	±0.30	Amphenol FCI		product family	DDR5 SODIMM R/A 262PIN	dwg no	10157422
ISO 1302	angular	0.XX	±0.20	RVS CONNECTOR 0.50mm PITCH		rel level	Preliminary	rev	1
		0.XXX	±0.10	cat. no.	-	Product - Customer Drw	sheet 2 of 4		
		0°	±2°						

Amphenol FCI

© 2020 Amphenol Corporation



RECOMMEND PCB LAYOUT  
THE TOLERANCE UNLESS SPECIFIED IS ±0.05MM



DETAIL A  
SCALE 4:1

PRELIMINARY

spec ref	dr	Ji-Lu Lu	2021/05/17	projection	MM	size	A2	scale	1:1
tolerance std	eng	-	2021/05/25			ecn no	-	rel level	Preliminary
ISO 406	chr	-	-						
ISO 1101	appr	-	-						
TOLERANCES UNLESS OTHERWISE SPECIFIED		Amphenol FCI		product family		-		-	
surface	linear	0.X	±0.30	title		DDR5 SODIMM R/A 262PIN		cat. no.	-
		0.XX	±0.20	part no.		RVS CONNECTOR 0.50mm PITCH		Product - Customer Drw	sheet 3 of 4
		0.XXX	±0.10	dwg no		10157422		rev	1
ISO 1302	angular	0°	±2°	-		-		-	

- NOTES:
- MATERIAL:
    - HOUSING:HIGH TEMPERATURE MATERIAL ,COLOR:BLACK.
    - CONTACT:COPPER ALLOY.
    - SOLDER TAIL AND HOLD DOWN:STAINLESS STEEL.
  - FINISH:
    - CONTACT: GOLD FLASH PLATING ON SOLDER TAIL.  
GOLD PLATING (THICKNESS SEE PART NUMBER DESCRIPTION)  
ON CONTACT AREA.
    - SOLDER TAIL:  
MATTE TIN PLATING ALL OVER,NICKEL UNDERPLATED ALL OVER.
  - DATE CODE : SSYYWWD  
S: MANUFACTURING SITE  
VALLEY GREEN =V  
DONGGUAN= DG  
MALAYSIA= M  
YY:YEAR  
WW:WEEK  
D: DAY (MONDAY=1)
  - PRODUCT SPECIFICATION:GS-12-XXXX
  - PACKAGE SPECIFICATION:GS-14-XXXX
  - PRODUCT MARKING,(PART NUMBER&LOT CODE),ON THIS SURFACE
  - LEAD FREE PRODCUT MEETS THE EUROPEAN UNION DRECTIVES&OTHER  
COUNTRY REGULATIONS AS DESCRIBED IN GS-47-0004
  - THE CONNECTOR WILL WITHSTAND EXPOSURE TO 260°C PEAK TMPERATURE  
FOR 10 SECONDS IN CONVECTION,INFAR-RED ,OR VAPOR PHASE  
REFLOW OVEN

PART NUMBER DESCRIPTION:

10157422-0 0 X R H L F

HALOGEN FREE & LEAD FREE  
R:TAPE&REEL PACKING  
PLATING CODE:  
1:GF  
2:Au 10u"  
4:Au 15u"  
5:Au 30u"

PRELIMINARY

spec ref		dr	Ji-Lu Lu	2021/05/17	projection	MM	size	A2	scale	1:1
tolerance std		eng	-	2021/05/25		←→	ecn no		-	
ISO 406	TOLERANCES UNLESS OTHERWISE SPECIFIED	chr	-	-			rel level		Preliminary	
ISO 1101		appr	-	-	-		-			
surface		linear	0.X	±0.30	product family		-		-	
ISO 1302		0.XX	±0.20	Amphenol FCI		title		DDR5 SODIMM R/A 262PIN		
		0.XXX	±0.10	RVS CONNECTOR 0.50mm PITCH		cat. no.		-		
	angular	0°	±2°	Product - Customer Drw		sheet 4 of 4		rev		
						10157422		1		