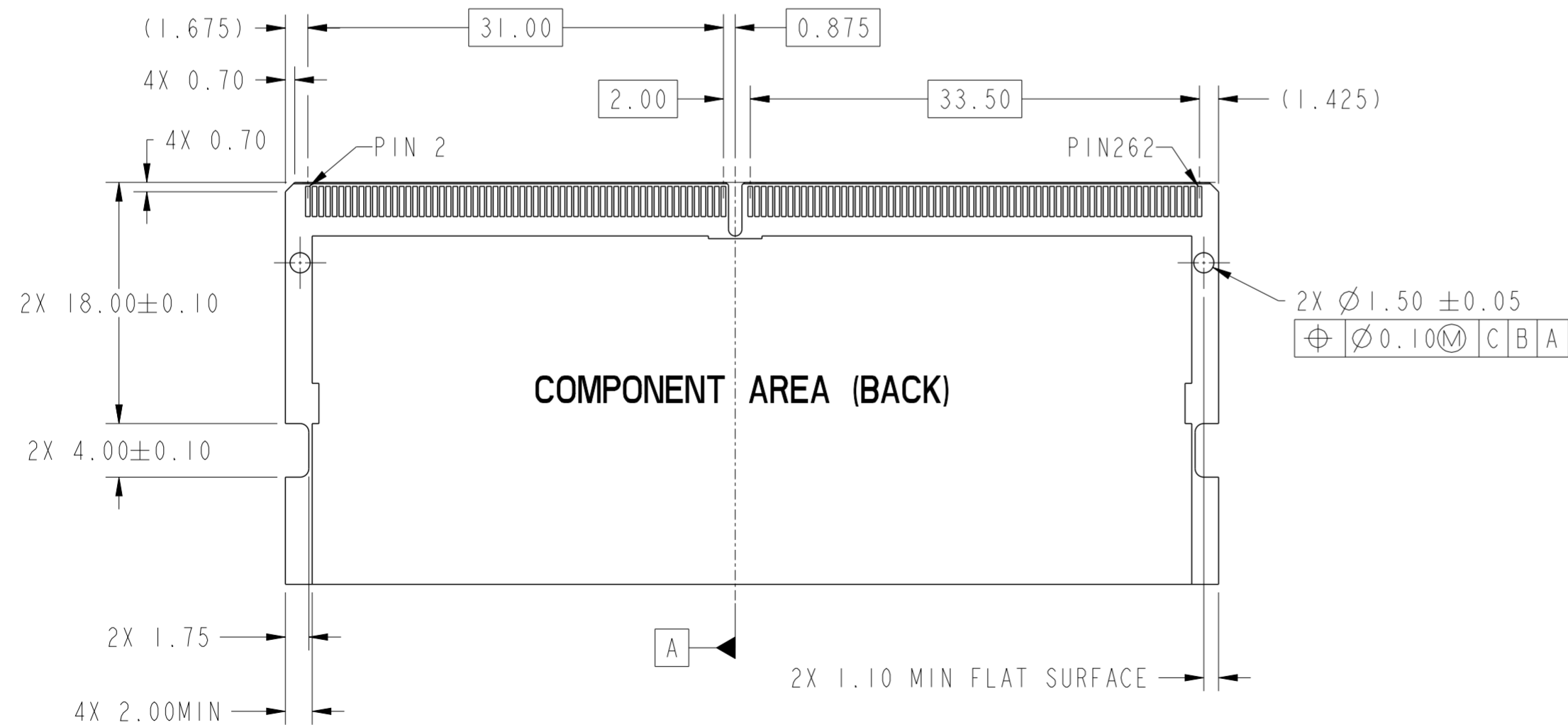
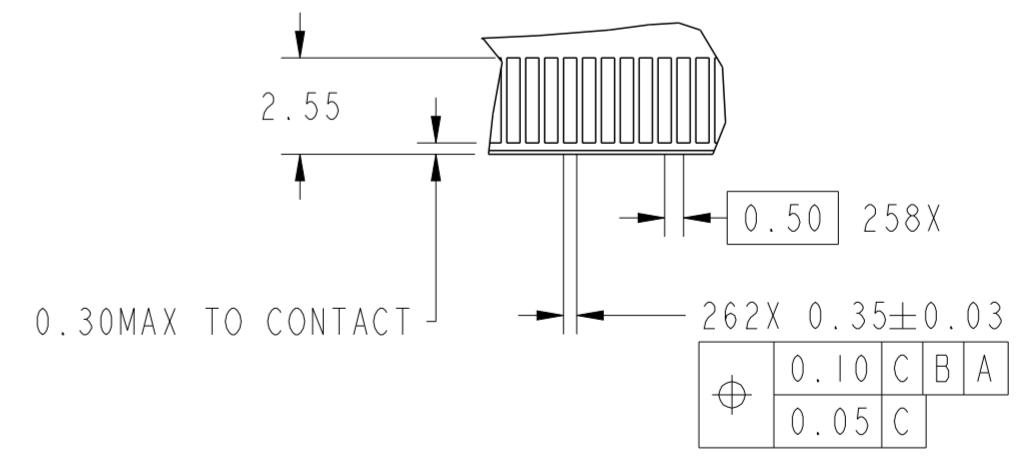
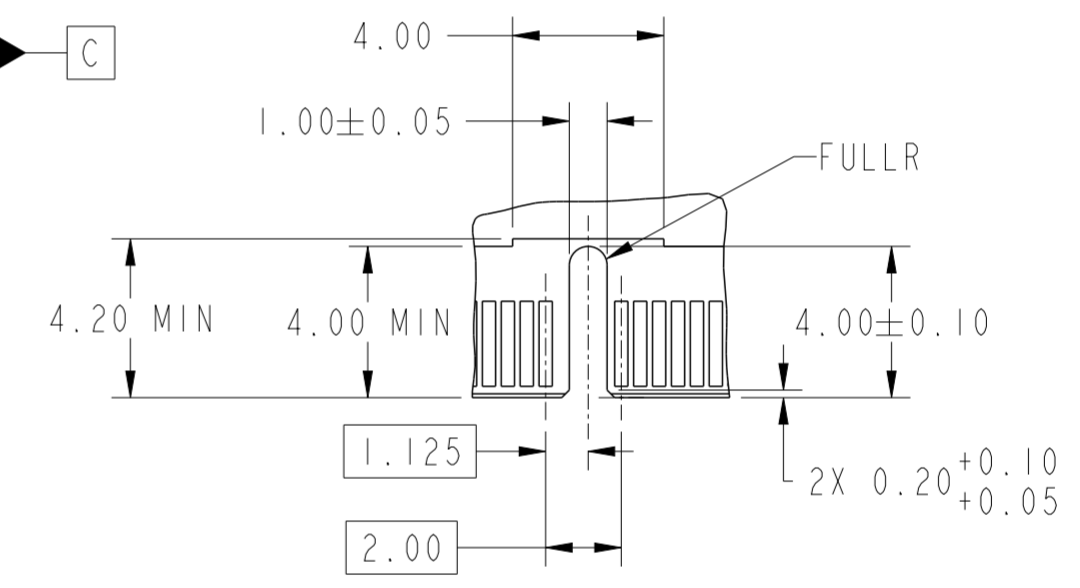
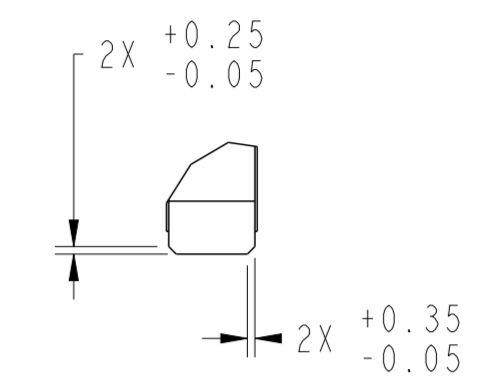
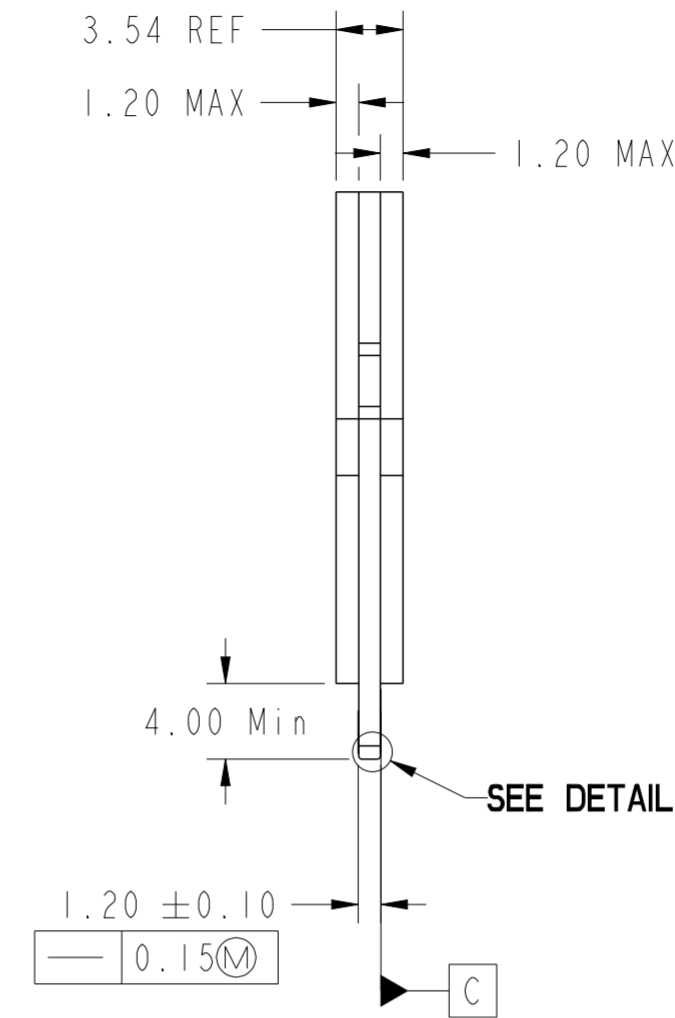
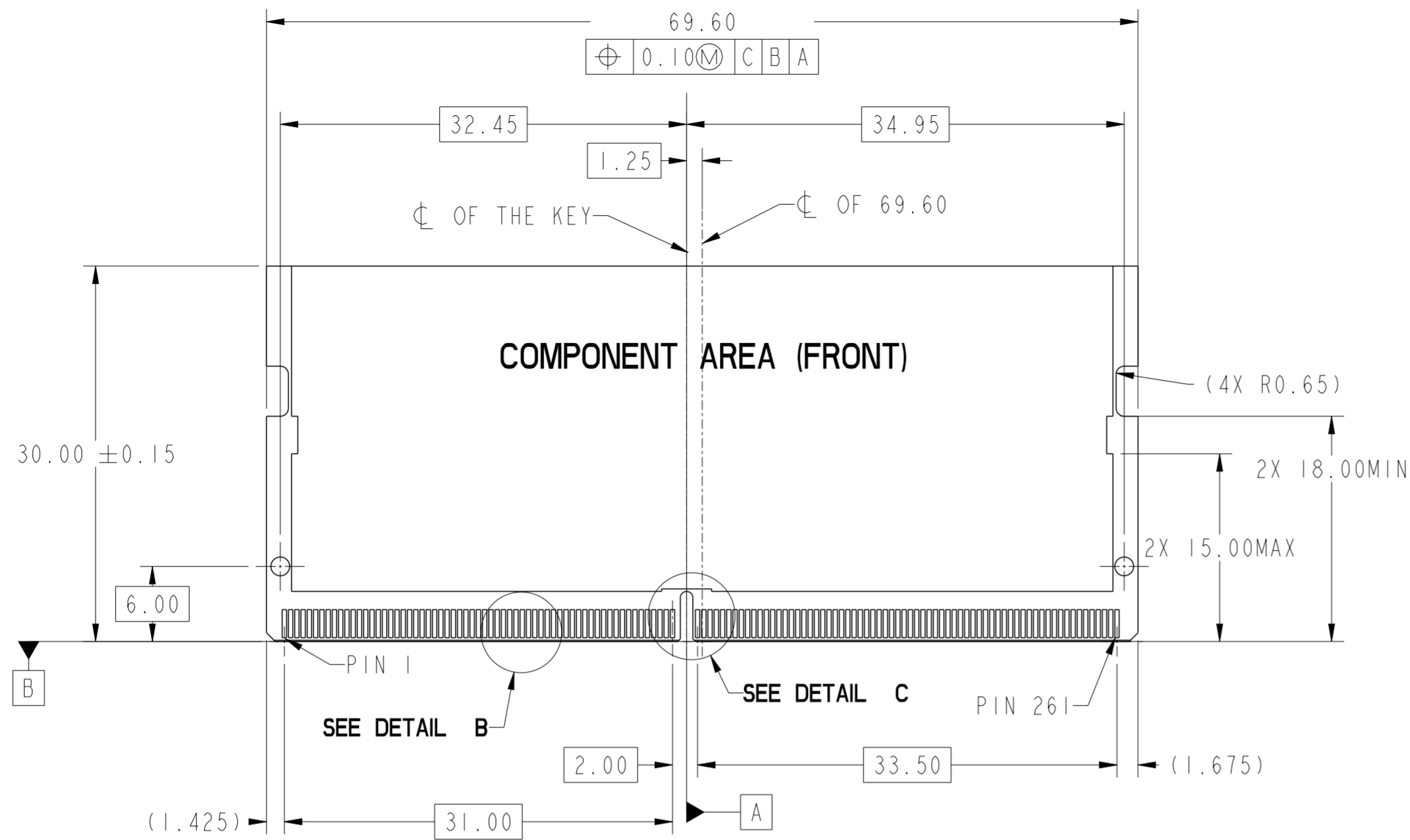


**MATING/UNMATING VIEW**  
 MATING: ① INSERTING (25°) → ② ROTATING → ③ FIXED  
 UNMATING: ④ UNFIXED → ⑤ ROTATING → ⑥ WITHDRAWING

**PRELIMINARY**

spec ref	dr	Gohan Wu	2022/09/19	projection	MM	size	A2	scale	1:1
tolerance std	eng	-	2022/09/19		MM	ecn no	-	rel level	Preliminary
ISO 406	chr	-							
ISO 1101	appr	-							
TOLERANCES UNLESS OTHERWISE SPECIFIED				product family					
surface	linear	0.X	±0.30		title		DDR5 SODIMM R/A 262PIN	dwg no 10161036	rev 1
		0.XX	±0.20		RVS CONNECTOR 0.50mm PITCH				
		0.XXX	±0.10		cat. no.		Product - Customer Drw		
ISO 1302	angular	0°	±2°						



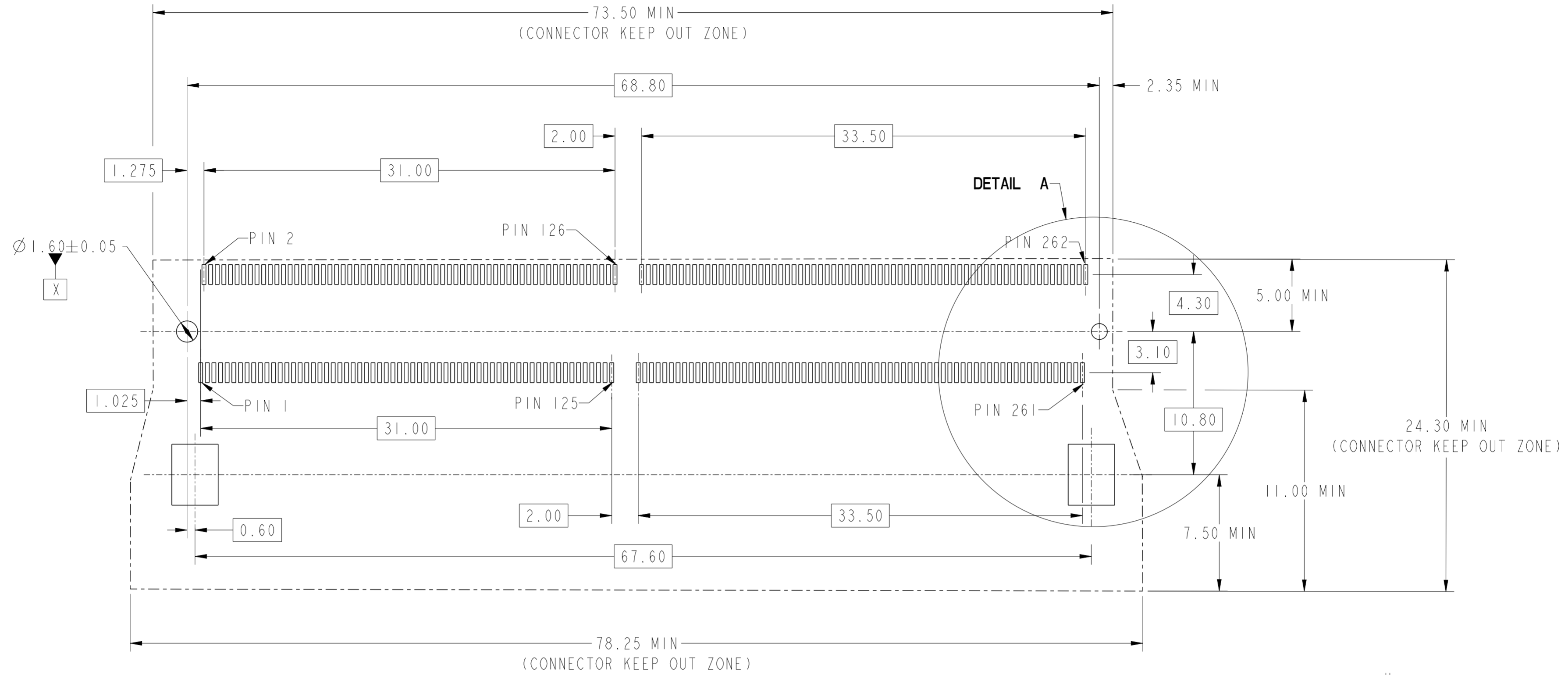
**RECOMMEND CARD**

**PRELIMINARY**

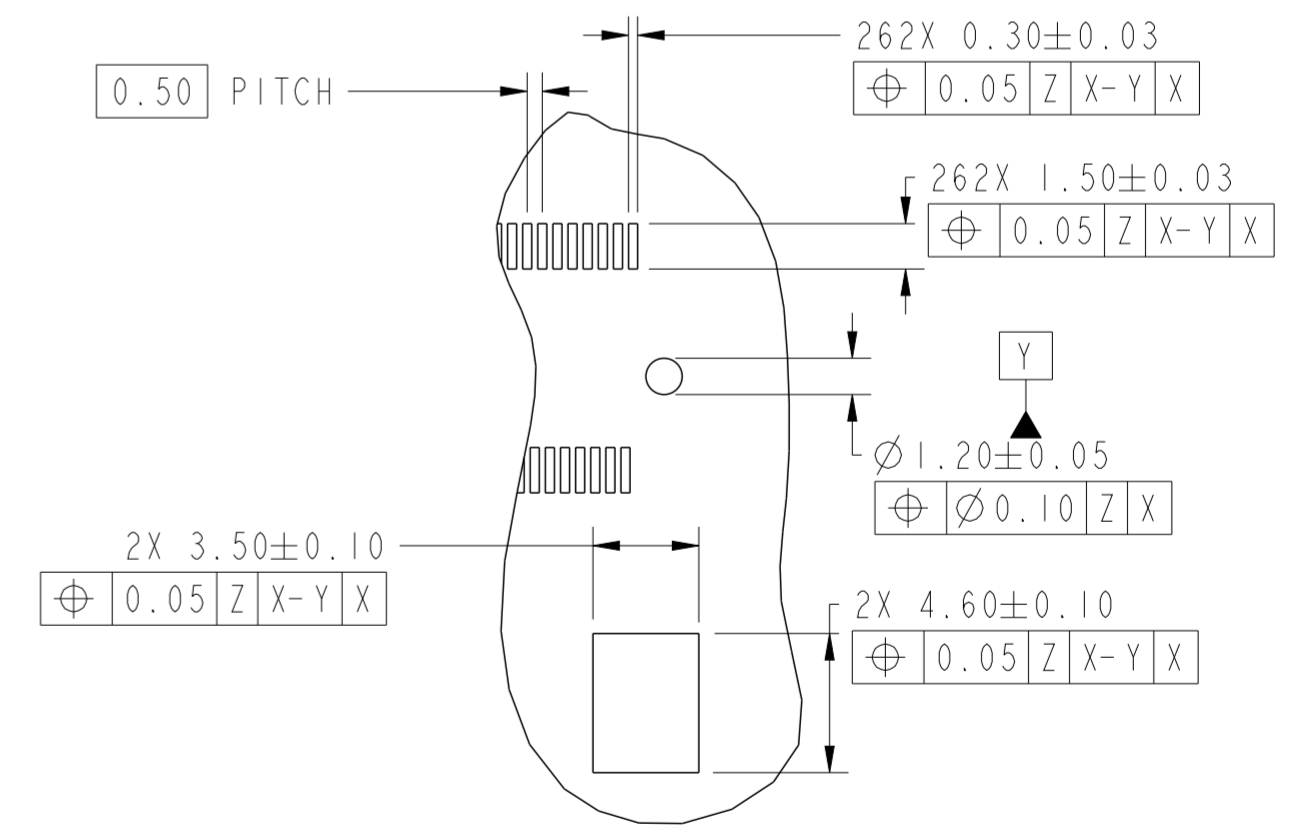
spec ref	dr	Gohan Wu	2022/09/19	projection	MM	size	A2	scale	1:1	
tolerance std	eng	-	2022/09/19			ecn no	-	rel level	Preliminary	
ISO 406	chr	-	-							
ISO 1101	appr	-	-	product family	-	-	-	-	-	
surface	linear	0.X	$\pm 0.30$	<b>Amphenol FCI</b>	title DDR5 SODIMM R/A 262PIN RVS CONNECTOR 0.50mm PITCH	dwg no 10161036	rev 1	cat. no. -	Product - Customer Drw	sheet 2 of 4
		0.XX	$\pm 0.20$							
		0.XXX	$\pm 0.10$							
ISO 1302	angular	0°	$\pm 2^\circ$							

Amphenol FCI

© 2020 Amphenol Corporation



RECOMMEND PCB LAYOUT  
 THE TOLERANCE UNLESS SPECIFIED IS  $\pm 0.05\text{MM}$



DETAIL A  
 SCALE 4:1

PRELIMINARY

spec ref	dr	Gohan Wu	2022/09/19	projection	MM	size	A2	scale	1:1
tolerance std	eng	-	2022/09/19			ecn no	-	rel level	Preliminary
ISO 406	chr	-	-						
ISO 1101	appr	-	-						
TOLERANCES UNLESS OTHERWISE SPECIFIED		Amphenol FCI		product family		-		-	
surface	linear	0.X	$\pm 0.30$	title		DDR5 SODIMM R/A 262PIN		dwg no	10161036
		0.XX	$\pm 0.20$	RVS CONNECTOR 0.50mm PITCH		-		rev	1
		0.XXX	$\pm 0.10$	cat. no.		-		Product - Customer Drw	
	angular	0°	$\pm 2^\circ$	sheet 3 of 4		-		-	

NOTES:

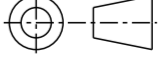
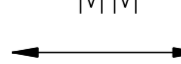

1. MATERIAL:
  - 1.1 HOUSING: HIGH TEMPERATURE MATERIAL ,COLOR:BLACK.
  - 1.2 CONTACT: COPPER ALLOY.
  - 1.3 LATCH: STAINLESS STEEL.
2. FINISH:
  - 2.1 CONTACT: GOLD FLASH PLATING ON SOLDER TAIL.  
GOLD PLATING (THICKNESS SEE PART NUMBER DESCRIPTION) ON CONTACT AREA.  
50 u"MIN NICKEL UNDERPLATED ALL OVER .
3. PRODUCT SPECIFICATION: GS-12-XXXX
4. PACKAGE SPECIFICATION: GS-14-XXXX
5. PRODUCT MARKING, (PART NUMBER&LOT CODE), ON THIS SURFACE
6. LEAD FREE PRODCUT MEETS THE EUROPEAN UNION DRECTIVES&OTHER COUNTRY REGULATIONS AS DESCRIBED IN GS-47-0004
7. THE CONNECTOR WILL WITHSTAND EXPOSURE TO 260°C PEAK TEMPERATURE FOR 10 SECONDS IN CONVECTION, INFAR-RED ,OR VAPOR PHASE REFLOW OVEN

PART NUMBER DESCRIPTION:

10161036-0 0 X R H L F


 HALOGEN FREE & LEAD FREE  
 R: TAPE&REEL PACKING  
 PLATING CODE:  
 1: GF  
 2: Au 10u" MIN  
 4: Au 15u" MIN  
 5: Au 30u" MIN

PRELIMINARY

spec ref		dr	Gohan Wu	2022/09/19	projection	MM	size	A2	scale	1:1		
tolerance std		eng	-	2022/09/19			ecn no		-			
ISO 406		chr	-				rel level		Preliminary			
ISO 1101		appr	-				product family		-			
surface		linear	0.X	±0.30		title		DDR5 SODIMM R/A 262PIN		dwg no 10161036	rev 1	
			0.XX	±0.20		RVS CONNECTOR 0.50mm PITCH		cat. no.				-
			0.XXX	±0.10		Product - Customer Drw		sheet 4 of 4				
ISO 1302		angular	0°	±2°								