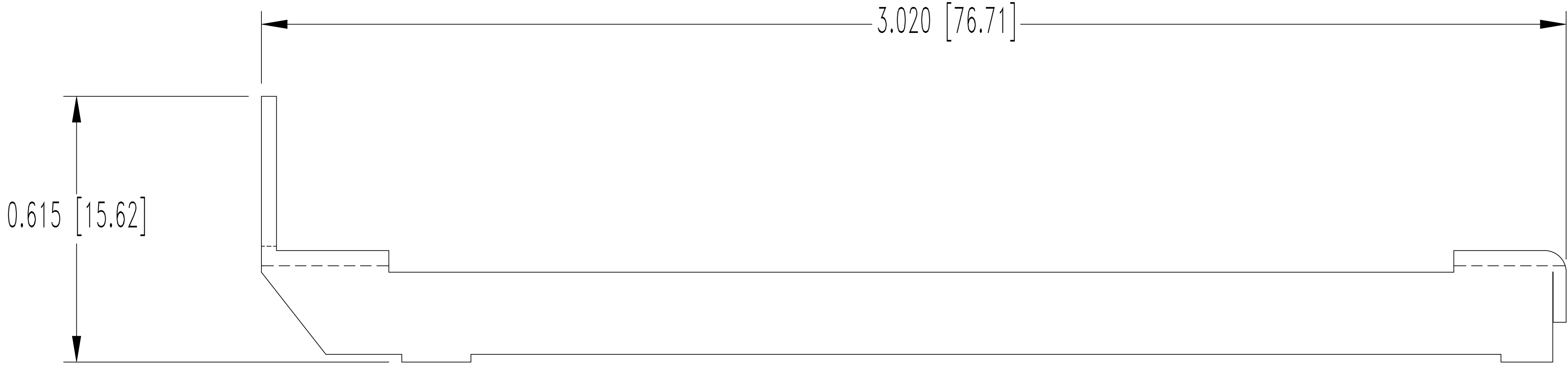
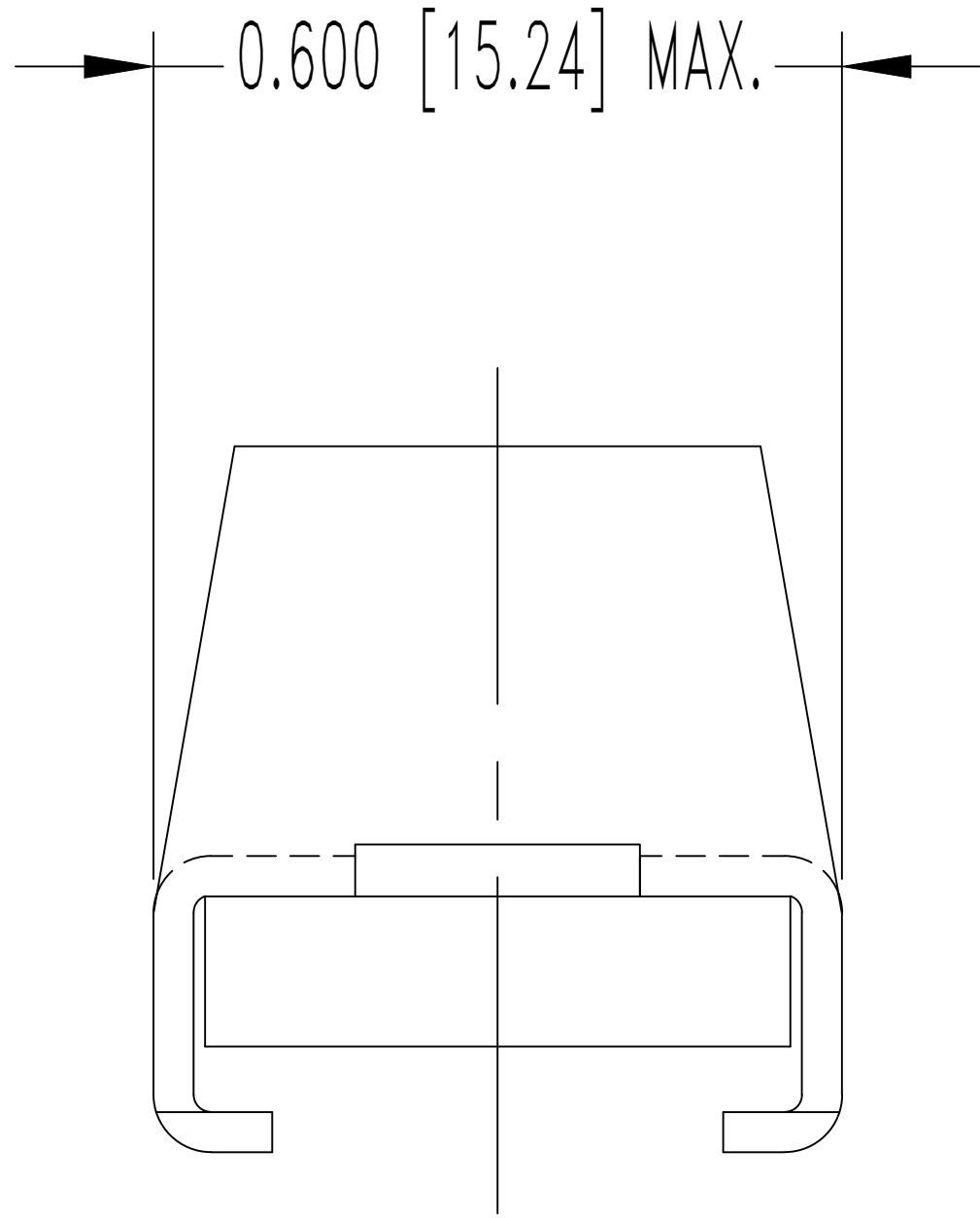
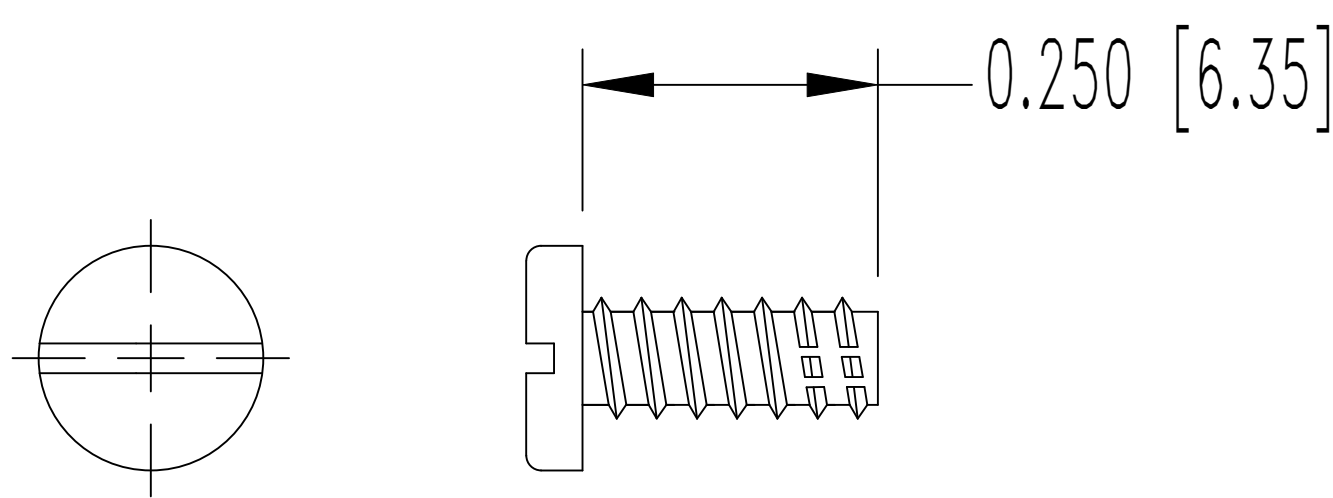


THIS DRAWING CONTAINS INFORMATION PROPRIETARY TO POSITRONIC AND IT'S SUBSIDIARIES. POSITRONIC BELIEVES THE DATA ON THIS DRAWING TO BE RELIABLE, SINCE THE TECHNICAL INFORMATION IS GIVEN FREE OF CHARGE, THE USER EMPLOYS SUCH INFORMATION AT HIS OWN DISCRETION AND RISK. POSITRONIC ASSUMES NO RESPONSIBILITY FOR RESULTS OBTAINED OR DAMAGES INCURRED FROM USE OF SUCH INFORMATION IN WHOLE OR IN PART.

DATE	REV	REVISION RECORD	APP	DR	CK
4-24-06	NC	ECO 25843		YK	

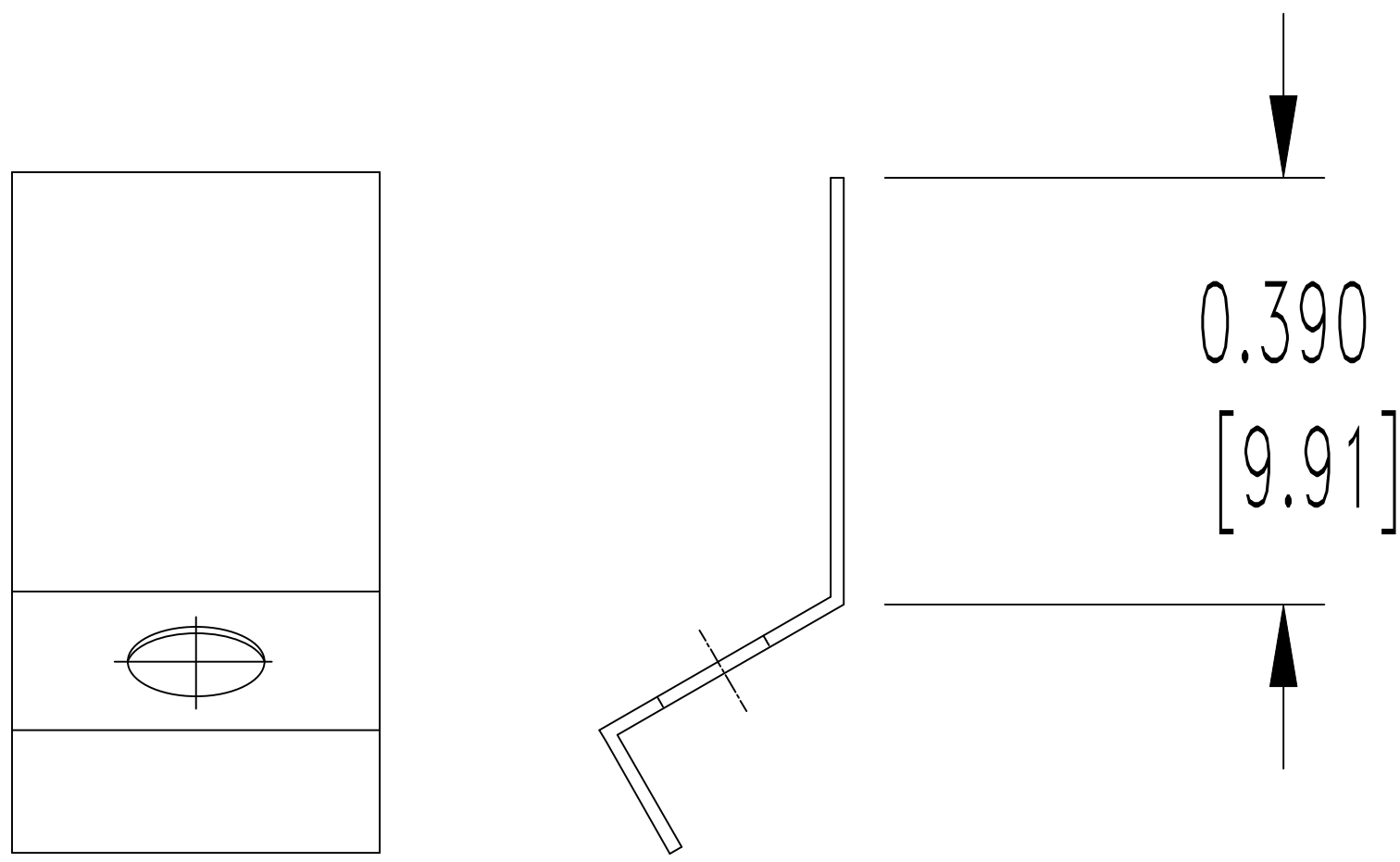


LOCKARM LEVER



MOUNTING SCREW

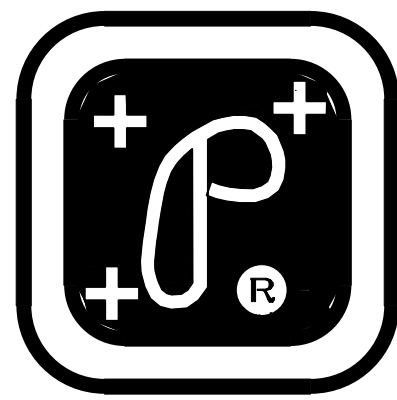
2X



LOCKARM SPRING

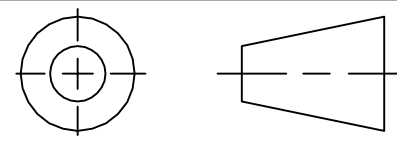
NOTES:

- MATERIAL & FINISHES:
LOCKARM: STEEL, NICKEL PLATE.
LOCKARM SPRING: BERYLLIUM COPPER, NICKEL PLATE.
SCREWS: STEEL, ZINC PLATE BLUE CHROMATE SEAL.
- THIS KIT CONSIST OF: 2 SCREWS, 1 LOCKARM LEVER, AND 1 LOCKARM SPRING.
- DIMENSIONS ARE IN INCHES [MILLIMETERS].



POSITRONIC INDUSTRIES INC.

SPRINGFIELD, MISSOURI 65801



DECIMAL TOL.
± 0.015 [0.38]

ANGULAR TOL.
± 5°

D SERIES

SCALE
N.T.S.

DRAWN BY
YK

APPROVED BY

TITLE

D370000VL0

DATE

4-24-06

DRAWING NUMBER

SK7284

REV.

NC