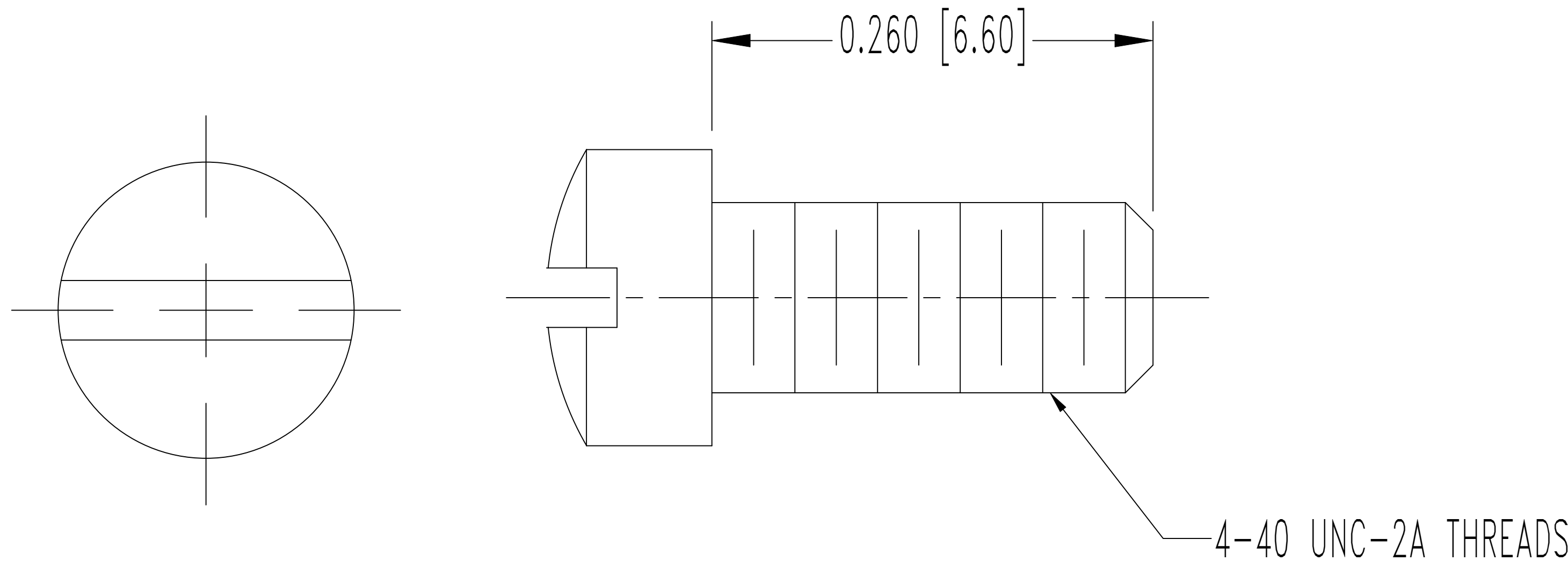


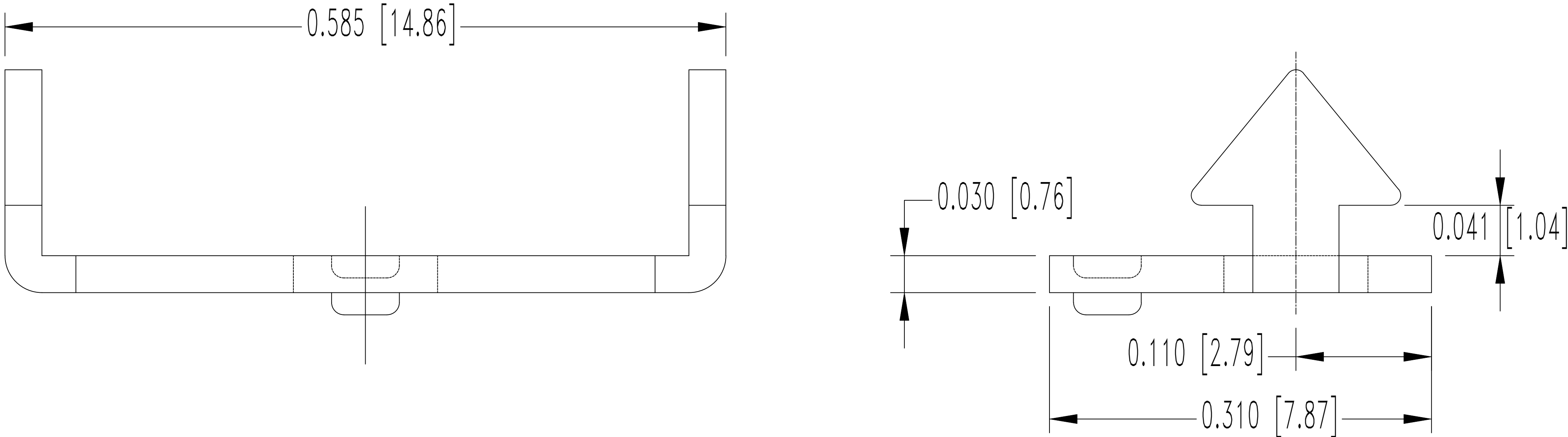
POSITRONIC INDUSTRIES BELIEVES THE DATA ON THIS DRAWING TO BE RELIABLE, SINCE THE TECHNICAL INFORMATION IS GIVEN FREE OF CHARGE, THE USER EMPLOYS SUCH INFORMATION AT HIS OWN DISCRETION AND RISK. POSITRONIC INDUSTRIES ASSUMES NO RESPONSIBILITY FOR RESULTS OBTAINED OR DAMAGES INCURRED FROM USE OF SUCH INFORMATION IN WHOLE OR IN PART.

DATE	REV	REVISION RECORD	APP	DR	CK
2-10-03	NC	ECO 20570		ME	

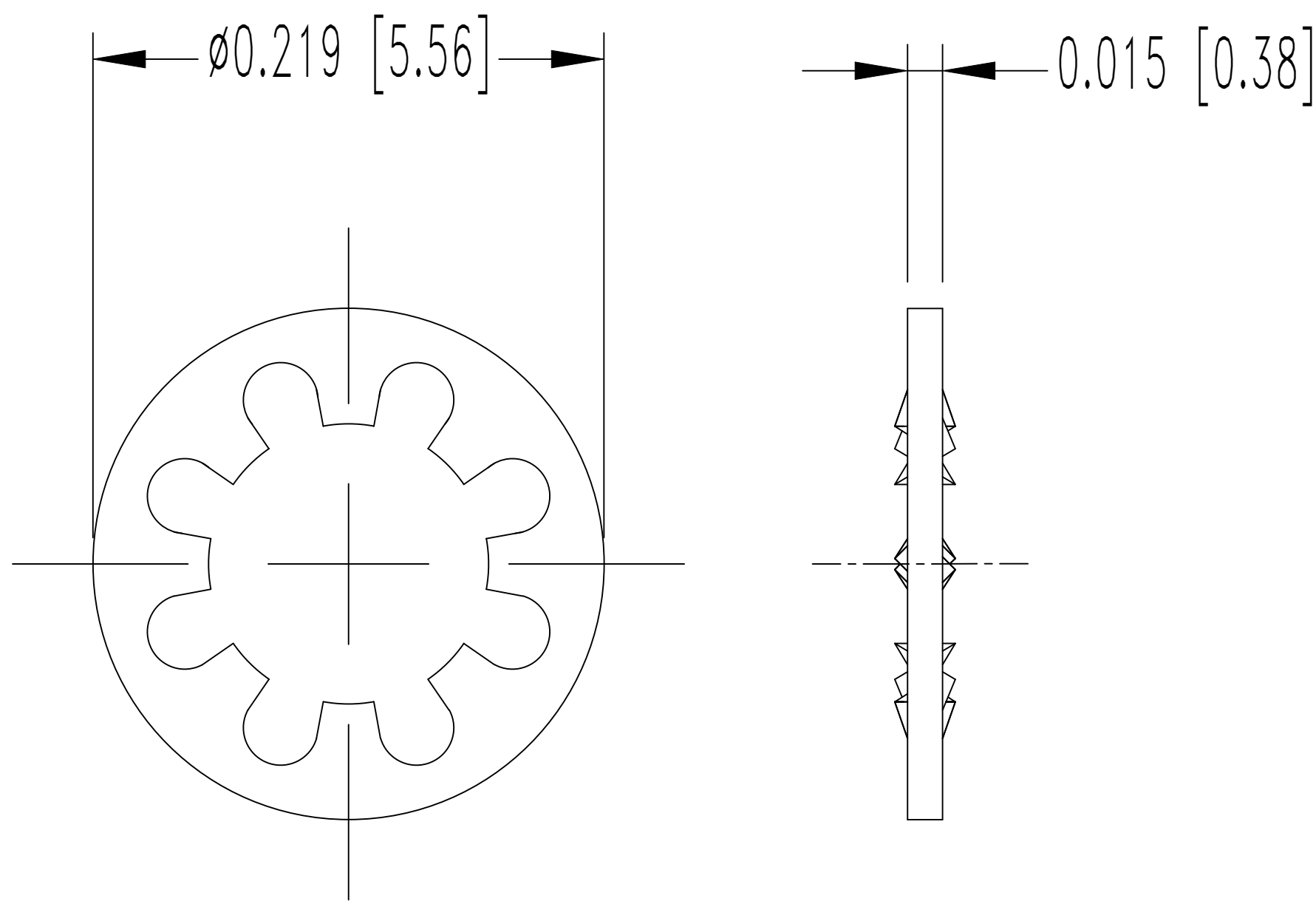
SCREW



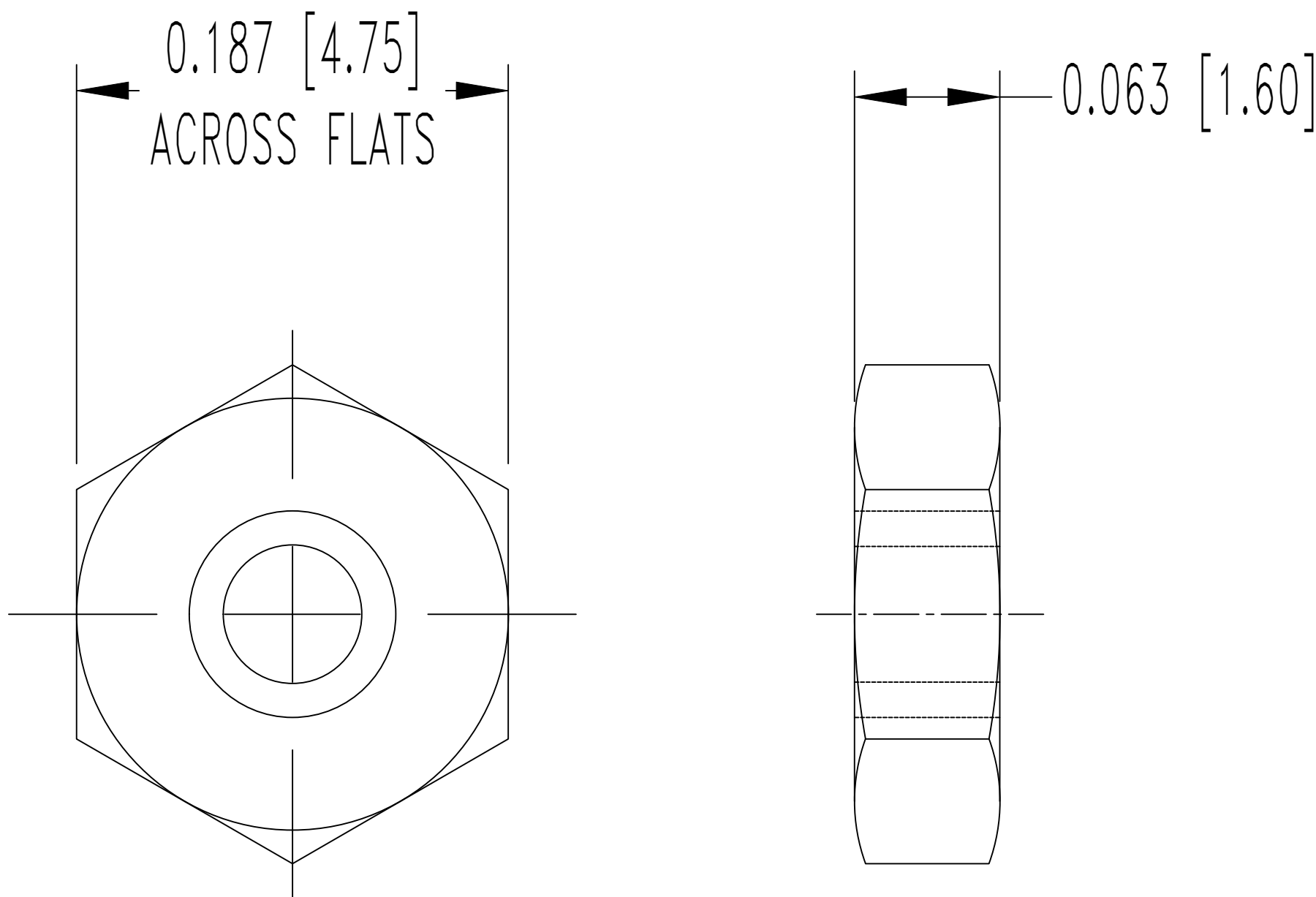
V5 LOCK TAB



LOCKWASHER

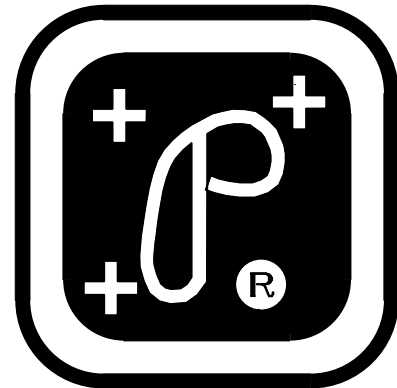


HEX NUT

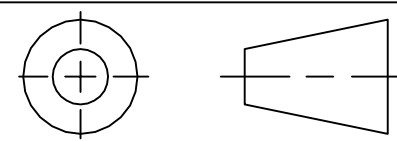


NOTES:

- MATERIALS AND FINISHES:  
LOCK TAB: STEEL, NICKEL PLATE.  
LOCKWASHERS: BRONZE, ZINC PLATE WITH DICHROMATE SEAL.  
HEX NUTS: BRASS, ZINC PLATE WITH DICHROMATE SEAL.  
SCREWS: BRASS, ZINC PLATE WITH DICHROMATE SEAL.
- THIS KIT CONSIST OF: 2 LOCK TABS, 2 LOCKWASHERS, 2 HEX NUTS AND 2 SCREWS.
- DIMENSIONS ARE IN INCHES [MILLIMETERS].



**POSITRONIC INDUSTRIES INC.**  
SPRINGFIELD, MISSOURI 65801



DECIMAL TOL.  
± 0.015 [0.38]

WF # 5027

ANGULAR TOL.  
± 5°

D SERIES

SCALE  
N.T.S.

DRAWN BY  
M. ENEA

APPROVED BY

TITLE  
D500000V50

DATE  
2-10-03

DRAWING NUMBER  
SK4916

REV.  
NC