

6

5

4

3

2

1

D

D

C

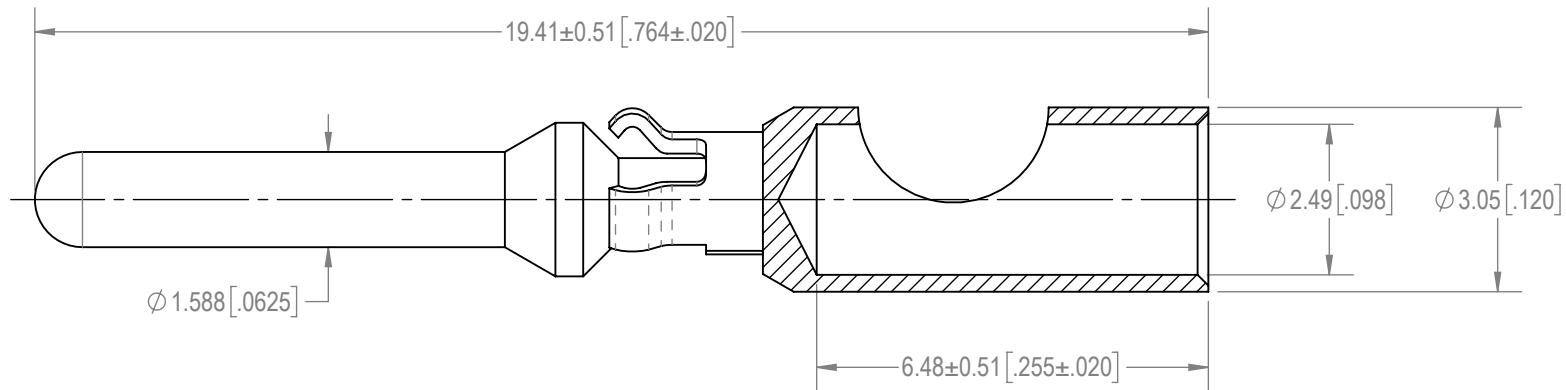
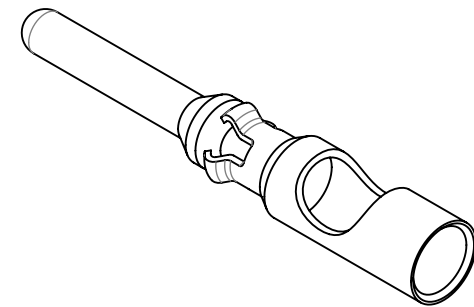
C

B



B

A

A

**NOTES:**

- MATERIAL AND FINISHES:**
CONTACT: PRECISION MACHINED HIGH CONDUCTIVITY COPPER ALLOY, GOLD FLASH OVER NICKEL PLATE.
RETENTION RING: BERYLLIUM COPPER, NICKEL PLATE.
- DETAILED PRODUCT, MECHANICAL AND ELECTRICAL INFORMATION IS AVAILABLE IN THE LATEST POWER CONNECTION SYSTEMS PRODUCT PUBLICATION AT CONNECTPOSITRONIC.COM.

BY SB		CHK SS		3RD ANGLE 		POSITRONIC BELIEVES THE DATA ON THE DRAWING TO BE RELIABLE. THE USER EMPLOYS SUCH INFORMATION AT HIS OWN DISCRETION AND RISK. POSITRONIC ASSUMES NO RESPONSIBILITY FOR RESULTS OBTAINED OR DAMAGES INCURRED FROM USE OF SUCH INFORMATION IN WHOLE OR IN PART.		 Positronic® CONNECTPOSITRONIC.COM		
APR PA		RELEASED DATE: 2021-02-22		SCALE NTS						
TOLERANCES +0.03mm [.001 INCHES]FOR MALE CONTACT MATING DIAMETERS +0.08mm [.003 INCHES]FOR CONTACT TERMINATION DIAMETERS +0.13mm [.005 INCHES]FOR ALL OTHER DIAMETERS +0.38mm [.015 INCHES]FOR ALL OTHER DIMENSIONS ±5° FOR ALL ANGLES DIMENSION ARE IN MILLIMETERS [INCHES]					PART NUMBER MS112NS		SERIES PCS			
					TITLE MS112NS					
					CREATED ON: 2021-02-19		SHEET SHEET 1 OF 1			REV C

6

5

4

3

2

1