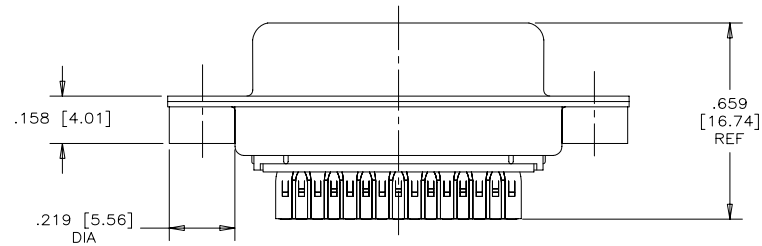
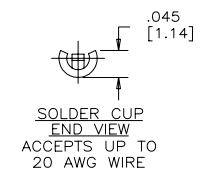
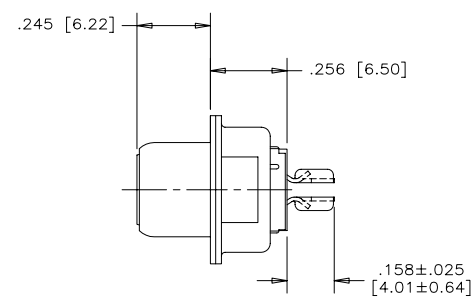
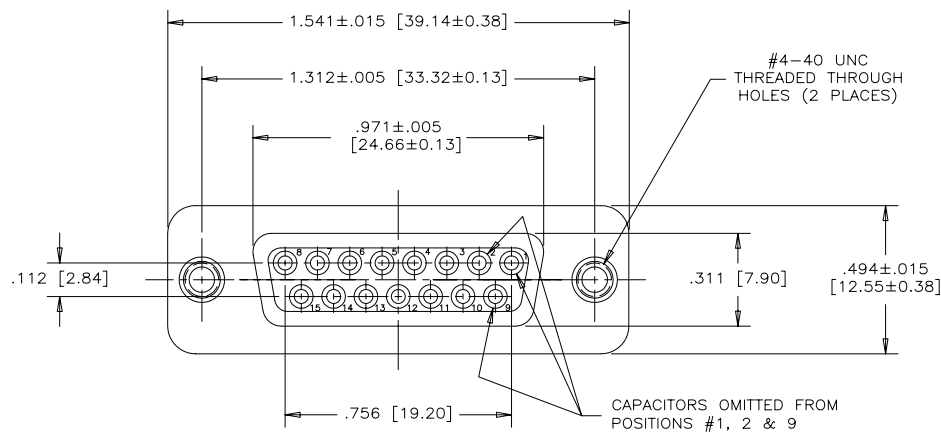
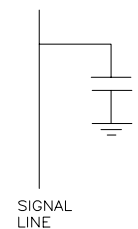


REVISIONS			
REV	ECN, ERN NO.	DATE	APPRD.
A	PRODUCT DRAWING (EAR 13474)	FEB10/09	K.L.



CAPACITANCE SCHEMATIC FOR POSITONS #3 TO 8 AND #10 TO 15 ONLY



NOTES:

1. MATERIALS: ALL MATERIALS ARE RoHS COMPLIANT.
 - SHELL: STEEL, TIN PLATED
 - CONTACTS: PHOSPHOR BRONZE, PLATED WITH 15μ" [0.38 MICRONS] GOLD OVER 50μ" [1.27 MICRONS] MINIMUM NICKEL IN THE MATING AREA AND 100μ" [2.54 MICRONS] MINIMUM MATTE TIN ON THE TAILS.
 - INSULATOR: ENGINEERING THERMOPLASTIC, GLASS REINFORCED, UL FLAMMABILITY RATING 94V-0, COLOUR: BLACK
2. CONTACT RESISTANCE: 15 MILLIOHMS MAXIMUM
3. INSULATION RESISTANCE: 3000 MEGOHMS MINIMUM
4. CURRENT RATING: 5 AMPS MAXIMUM
5. CAPACITANCE: 1,000 pF ±15% (12 PLACES)
6. DIELECTRIC WITHSTANDING VOLTAGE: 600 VDC
7. OPERATING TEMPERATURE: -40°C TO 85°C
8. TOLERANCE UNLESS INDICATED OTHERWISE: ±.005 [0.13]

ORDERING CODE: F C E 1 7 - A 1 5 S M - 4 5 1

SERIES
FCE17=FILTERED D-SUB, RoHS

SIZE/NUMBER OF CONTACTS
A15=A SIZE SHELL, 15 CONTACTS

CONNECTOR STYLE
S=SOCKET

TERMINATION TYPE
M=SOLDER CUP CONTACT TAIL

MODIFIER
1=SPECIAL SELECTIVELY POSITIONED CAPACITORS, OMITTED FROM POSITIONS #1, 2 & 9

FILTER CAPACITANCE
5=1000pF
REFER TO AMPHENOL CATALOGUE FOR FILTER PERFORMANCE CHARACTERISTICS

MOUNTING
4=#4-40UNC THREADED HOLES

DRAWN K. LAMBIE	DATE FEB10/09	Amphenol Canada Corp.	
DESIGNED			
CHECKED		FCE17 SERIES FILTERED D-SUB CONNECTOR, 15 SIZE SOCKET, SOLDER CUP CONTACTS, SELECTIVELY POSITIONED CAPACITORS, #4-40 MOUNTING HOLES, RoHS COMPLIANT	
I. E. APPRD.			
Q. A. APPRD.			
DWG. APPRD.			
ENG. REL. NO.		DWG C	REV. A
REF. EAR #13474		P-FCE17-A15SM-451	
DIMENSIONS ARE IN INCHES [mm]	CODE ID. NO. 03554	SCALE 3/1	WT. SURF. SHEET 1 OF 1

THIS DOCUMENT CONTAINS PROPRIETARY INFORMATION AND SUCH INFORMATION MAY NOT BE DISCLOSED TO OTHERS FOR ANY PURPOSE OR USED FOR MANUFACTURING PURPOSES WITHOUT WRITTEN PERMISSION FROM AMPHENOL CANADA CORP.