

Customer Information Sheet

DRAWING No.: G125-FV1XXF3-XXAB000P

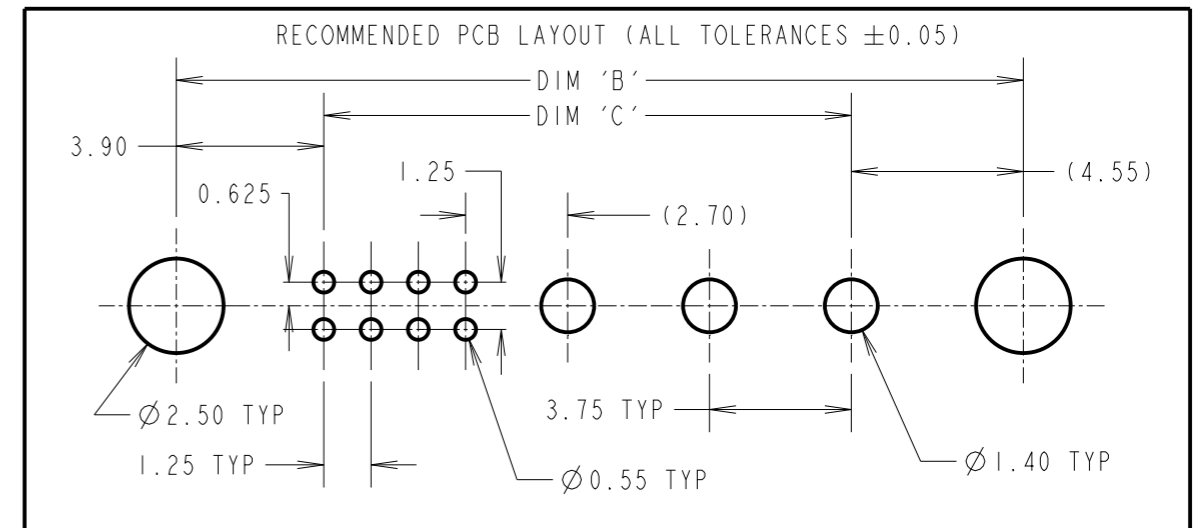
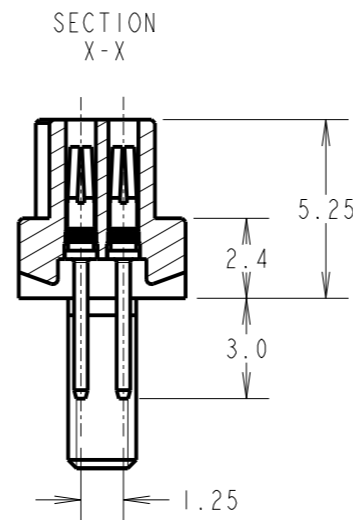
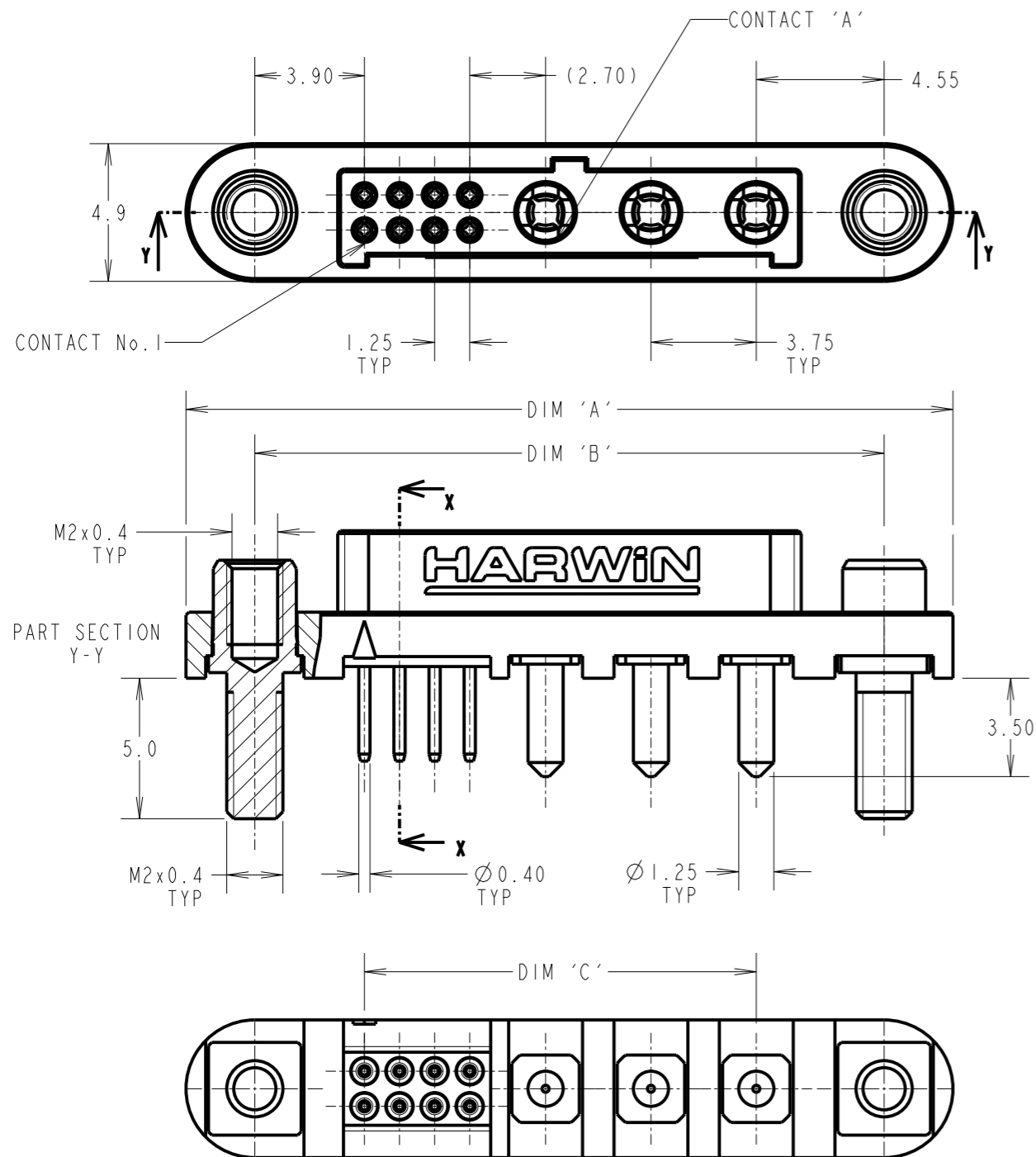
IF IN DOUBT - ASK

©

NOT TO SCALE

THIRD ANGLE PROJECTION

ALL DIMENSIONS IN mm



ORDER CODE:

G125-FV1XXF3-XXAB000P

NO. OF SIGNAL CONTACTS:—
SEE TABLE 2

- No. OF POWER
CONTACTS:
SEE TABLE 2

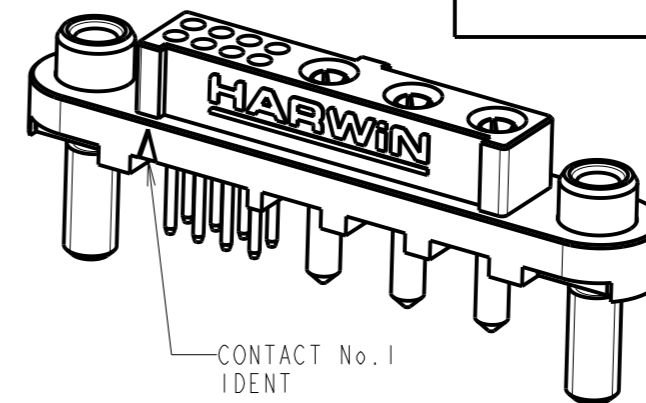


TABLE 1: DIMENSION CALCULATIONS

TABLE 1: DIMENSION CALCULATIONS	
DIMENSION	CALCULATION
DIM 'A'	$((\text{TOTAL No. OF SIGNAL CONTACTS} - 2) \times 0.625) + ((\text{TOTAL No. OF POWER CONTACTS} - 1) \times 3.75) + 16.05$
DIM 'B'	$((\text{TOTAL No. OF SIGNAL CONTACTS} - 2) \times 0.625) + ((\text{TOTAL No. OF POWER CONTACTS} - 1) \times 3.75) + 11.15$
DIM 'C'	$((\text{TOTAL No. OF SIGNAL CONTACTS} - 2) \times 0.625) + ((\text{TOTAL No. OF POWER CONTACTS} - 1) \times 3.75) + 2.70$

RTP	I	01.11.22	31971
NAME	ISS.	DATE	CN/CO
APPROVED: A.BOXALL			
CHECKED: S.BENNETT			
DRAWN: R.PORTLOCK			
CUSTOMER REF.:			
ASSEMBLY DRG:			

NOTES:

- NOTES:
1. FOR MATERIALS, FINISH AND PERFORMANCE SEE COMPONENT SPECIFICATION CI25XX (LATEST ISSUE).
 2. FOR PANEL MOUNT NUTS ORDER SEPARATELY, PART NUMBER: G125-4510000B ROUND SLOTTED NUT - BAG OF 12.



HARWIN

www.harwin.com
technical@harwin.com

THIS DRAWING AND ANY INFORMATION OR DESCRIPTIVE MATTER SET OUT HEREON ARE CONFIDENTIAL AND COPYRIGHT PROPERTY OF THE HARWIN GROUP AND MUST NOT BE DISCLOSED, LOANED, COPIED OR USED FOR MANUFACTURING, TENDERING OR FOR ANY OTHER PURPOSE WITHOUT THEIR WRITTEN PERMISSION.

TOLERANCES

X. = $\pm 1\text{mm}$
X.X = $\pm 0.50\text{mm}$
X.XX = $\pm 0.20\text{mm}$
X.XXX = $\pm 0.01\text{mm}$

ANGLES = $\pm 5^\circ$
UNLESS STATED

MATERIAL:

SEE ABOVE

FINISH.

SEE ABOVE

S/AREA:

mm²

TITLE:

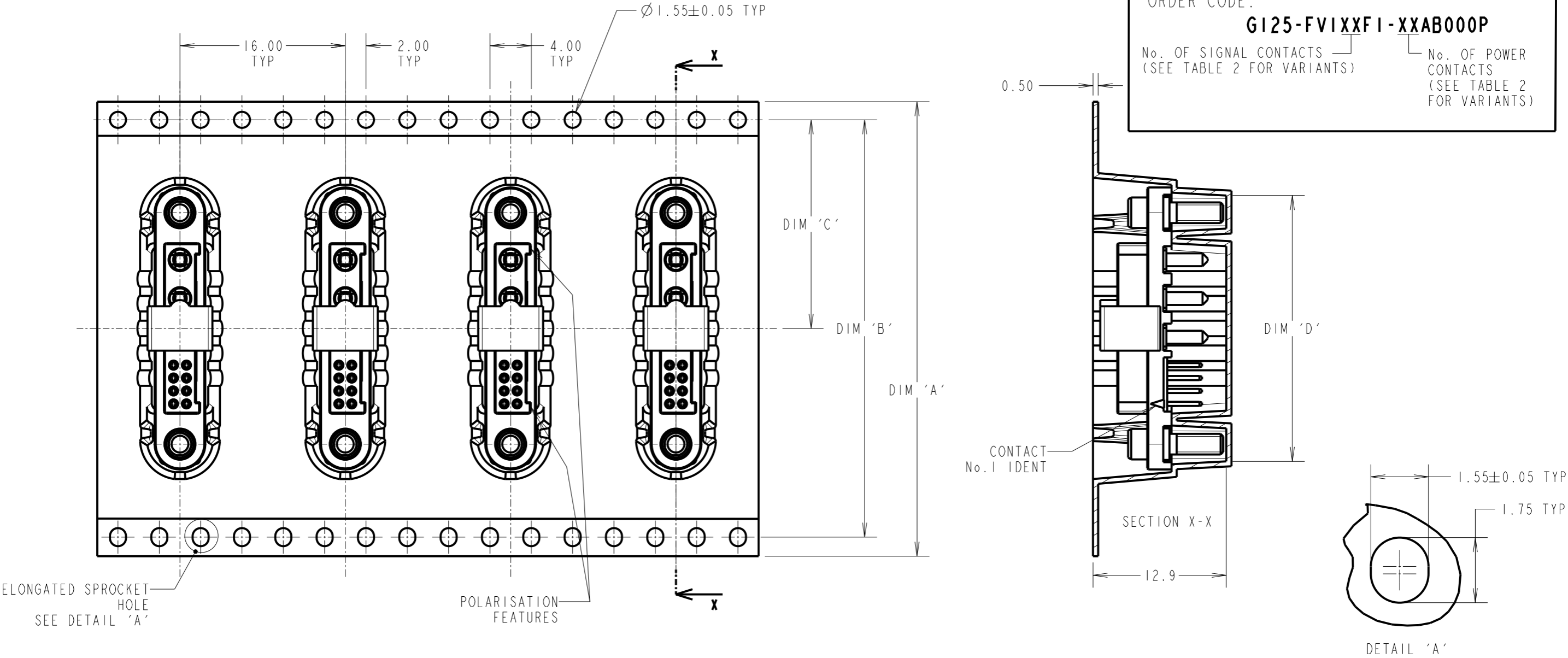
TITLE: GECKO-MT FEMALE
VERTICAL PC TAIL CONNECTOR

DRAWING NUMBER:

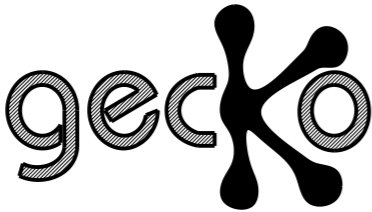
GI25-FV1XXF3-XXAB000P

SHT
OF

Customer Information Sheet



TAPE STRIP DETAILS ONLY,
SEE SHEET 3 FOR CONNECTOR
AND PCB LAYOUT DETAILS



NOTES:
2. COMPONENTS ARE ORIENTED IN TAPE POCKETS AS SHOWN.
3. COMPONENTS ARE SUPPLIED IN STRIPS OF TAPE, SUPPLIED
QUANTITY MAY CONSIST OF MORE THAN ONE STRIP, STRIP
LENGTH MAY VARY.

TABLE 2: AVAILABLE VARIANTS						
ASSEMBLY PART No.	DIM 'A'	DIM 'B'	DIM 'C'	DIM 'D'	No. OF POWER CONTACTS	No. OF SIGNAL CONTACTS
G125-FVI04F3-02AB000P	44.00	40.40	20.20	19.5	02	04
G125-FVI08F3-03AB000P				25.7	03	08
G125-FVI04F3-04AB000P				27.0	04	04
G125-FVI24F3-02AB000P	56.00	52.40	26.20	32.0	02	24
G125-FVI16F3-04AB000P				36.6	04	16
G125-FVI08F3-06AB000P				39.1	06	08

RTP	I	01.11.22	31971
NAME	ISS.	DATE	CN/CO
APPROVED: A.BOXALL			
CHECKED: S.BENNETT			
DRAWN: R.PORTLOCK			
CUSTOMER REF.:			
ASSEMBLY DRG:			

HARWIN

www.harwin.com
technical@harwin.com

THIS DRAWING AND ANY
INFORMATION OR DESCRIPTIVE
MATTER SET OUT HEREON ARE
CONFIDENTIAL AND COPYRIGHT
PROPERTY OF THE HARWIN
GROUP AND MUST NOT BE
DISCLOSED, LOANED, COPIED
OR USED FOR MANUFACTURING,
TENDERING OR FOR ANY
OTHER PURPOSE WITHOUT
THEIR WRITTEN PERMISSION.

TOLERANCES
X. = ±1mm
X.X = ±0.50mm
X.XX = ±0.20mm
X.XXX = ±0.01mm

ANGLES = ±5°

UNLESS STATED

MATERIAL:
SEE SHEET 3

FINISH: SEE SHEET 3

S/AREA: mm²

TITLE:
GECKO MT SERIES FEMALE
VERTICAL PC TAIL CONNECTOR

DRAWING NUMBER:
G125-FVIXXF3-XXAB000P
SHT 4 OF 4