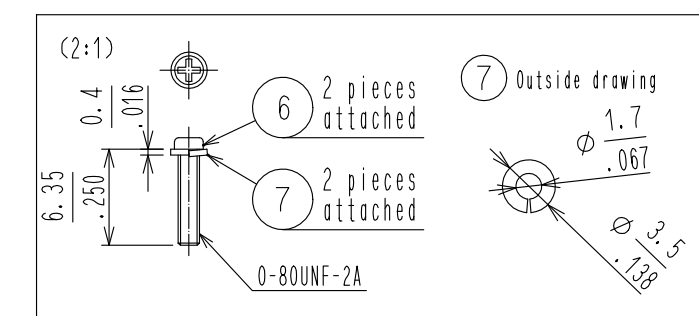


A  
—  
B  
—  
C  
—  
D  
—  
E  
—  
F



### MOUNTING OF CONNECTOR

Diagram of a 1/2 inch NPT plug. A warning label points to the side of the plug, stating: (PLEASE DO NOT APPLY FORCE BETWEEN THE EDGES OF THE PLUG).

(PLEASE MOUNT THE CONNECTOR AS LOCATED  
IN THE MIDDLE OF THE SIGNAL PAD OF PCB.)

### RECOMMENDED PC BOARD PATTERN DRAWING

Technical drawing showing a cross-section of a PCB pad and signal line connection. The drawing includes the following dimensions and labels:

- SIGNAL PAD**: The top horizontal pad.
- THE EDGE OF PCB**: The left vertical edge of the pad.
- B**: The width of the signal line.
- GROUND PAD**: The bottom horizontal pad.
- SIGNAL LINE**: The vertical line connecting the pads.
- THROUGH HOLE**: The hole in the PCB.
- Dimensions**:
  - Top horizontal dimension:  $5 \pm 0.03$
  - Top horizontal dimension:  $.335$
  - Bottom horizontal dimension:  $.197 \pm .001$
  - Left vertical dimension:  $4.3 \text{ MIN}$
  - Left vertical dimension:  $.169$
  - Left vertical dimension:  $2.2 \pm 0.05$
  - Left vertical dimension:  $.087 \pm .002$
  - Right vertical dimension:  $2 \times \phi 1.7 \pm 0.03$
  - Right vertical dimension:  $.067 \pm .002$

REGISTER FOR SIGNAL PAD AND GROUND PAD IS PROHIBITED.

(DRAWING CHANGED)

**B(10 : 1)**

Technical drawing of a semi-circular cross-section of a part. The drawing includes the following dimensions and tolerances:

- Top horizontal dimension:  $1.27 \pm 0.03$
- Dimension below the top horizontal line:  $.050 \pm .001$
- Dimension below the previous one:  $(.039)$
- Dimension below the previous one:  $.015$
- Bottom horizontal dimension:  $0.35 \pm 0.05$
- Dimension below the bottom horizontal line:  $.014 \pm .002$
- Dimension below the previous one:  $1 \pm 0.05$
- Bottom-most dimension:  $.039 \pm .002$

The drawing also features two callouts labeled "4" pointing to specific features on the top surface.

[illegible]