

NOTES:  
 1. MARKED WITH TE PART NUMBER, TE (HASTINGS) CAGE CODE, DATE CODE AND REAR CONTACT LOCATION MARKING WHERE SHOWN. SEE SHEET 2 FOR TEXT AND POSITIONS.

PART NUMBER EXAMPLE: D369 - MB 9 9 - N S 1

BASIC PART No. \_\_\_\_\_  
 SHELL STYLE \_\_\_\_\_  
 (MB = INLINE METALLIZED PANEL MOUNT RECEPTACLE, 1.60mm PANEL)  
 SHELL SIZE \_\_\_\_\_  
 CONTACT QTY \_\_\_\_\_  
 (9 = 9x #22's, 6 = 6x #22's, 3 = 3x #22's)

CONTACT CONFIGURATION 4.  
 CONTACT TYPE ( P = PIN, S = SKT)  
 SHELL KEYING

2. PERFORMANCE:

TEMPERATURE RANGE	-55°C TO +175°C
DIELECTRIC WITHSTAND VOLTAGE (AT SEA LEVEL)	1500VRMS <2mA LEAKAGE
DURABILITY	500 MATING CYCLES MIN.
INSULATION RESISTANCE	≥5000 MΩ INITIAL
IP RATING	IP65
SEALING	RTCA DO160 - CATEGORY A4 (15,000ft)
HUMIDITY	RTCA DO160 - CATEGORY A

PRELIMINARY DRAWING

FOR REVIEW PURPOSES. CONSULT ENGINEERING BEFORE USE.

3. INSERTION/EXTRACTION TOOL (M81969/14-01 OR EQUIVALENT) SUPPLIED SEPARATELY.

4 Contact Configuration	Contact Description	Contact P/N (OR EQUIVALENT)		Crimp Positioner		Crimp Tool	Wire Accommodation	Current Rating
		Pin	Socket	Pin	Socket			
0	NO CONTACTS SUPPLIED							
1	CRIMP, COPPER WIRE	38941-22L	38946-22L	M22520/2-09	M22520/2-06	M22520/2-01	22-26 AWG	5A (22 AWG)
2	CRIMP, ALUMINIUM WIRE	200-1042-22	200-1142-22	KAL2		ALNP 22-A	22 AWG	5A
3	CRIMP, COPPER WIRE (ENLARGED WIRE)	182-0860-22	182-0862-22	M22520/2-09	M22520/2-06	M22520/2-01	20-24 AWG	7.5A (20 AWG)**

\*\* UPPER TEMPERATURE LIMIT DE-RATED TO +133°C AT 7.5A (20 AWG)

5. MATERIALS & FINISHES:

COMPONENT	MATERIAL	FINISH
SEALS	SILICONE/ FLUROSILICONE BLEND	N/A
INSERT PARTS/ PANEL CLIP	THERMOPLASTIC	N/A
SHELL BODY	THERMOPLASTIC	ELECTROLESS NICKEL PLATED
PANEL GASKET	FLUROSILICONE - ALUMINIUM	N/A
CONTACTS	COPPER ALLOY	GOLD PLATED

NICKEL PLATED FINISH MAY VARY IN COSMETIC APPEARANCE. PLATING MAY BE DULL IN APPEARANCE WITH A ROUGH SURFACE, OR SHINY IN APPEARANCE WITH A SMOOTH SURFACE. THIS IN NO WAY AFFECTS THE FORM, FIT OR FUNCTION OF THE PRODUCT, OR THE ENVIRONMENTAL PERFORMANCE OF THE PLATED FINISH. IT SHOULD BE CONSIDERED A VISUAL VARIATION ONLY.

6. MAXIMUM WEIGHT (WITHOUT CONTACTS): 3.5g (PIN INSERT), 3.4 (SKT INSERT).

7. EMI SHIELDING PERFORMANCE (MATED PAIR):

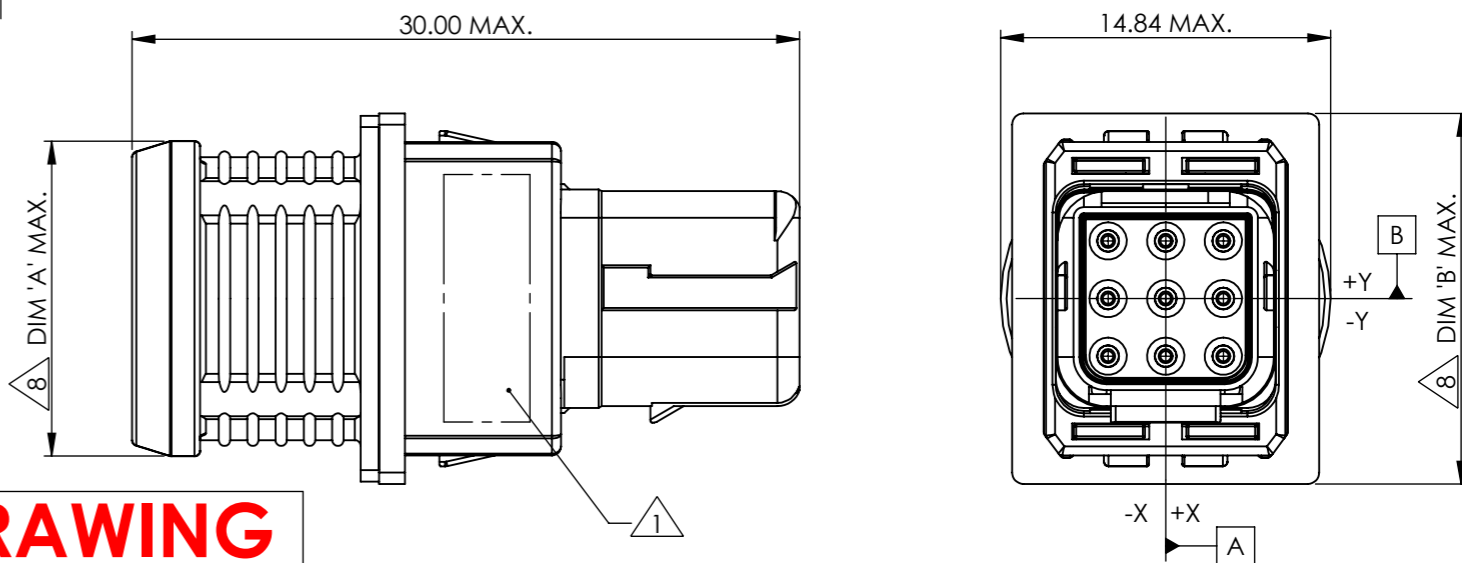
FREQUENCY (MHz)	150	200	300	400	800	1000	1500	2000	3000	4000	6000	10000
ATTENUATION (dB)	65	60	55	55	45	43	40	37	35	33	30	20

8. DIMENSIONS:

PART NUMBER	DIM 'A'	DIM 'B'
D369-MB33-***	9.33	11.34
D369-MB66-***	11.75	13.88
D369-MB99-***	14.18	16.42

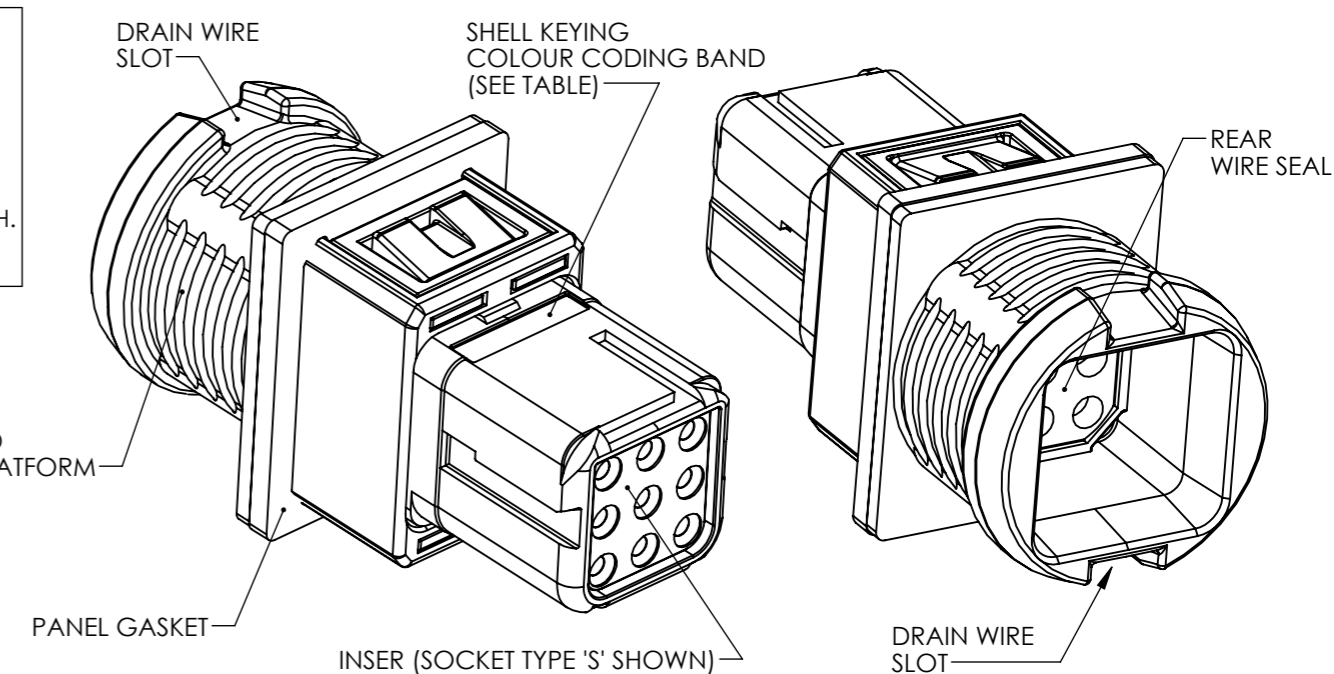
9. DIMENSIONS ARE TRUE POSITIONS OF CAVITIES AT FRONT OF SOCKET INSERT (PIN OPPOSITE).  
 CENTRE OF EACH CAVITY  $\phi$  0.20 A B

SHELL KEYING	
ORIENTATION	COLOUR CODING BAND
N	BLACK
A	DARK RED
B	DARK BLUE
C	DARK GREEN
D	YELLOW



9 COORDINATE POSITIONS OF CONTACTS

CONTACT POSITION (ID)	D369-MB33-***		D369-MB66-***		D369-MB99-***	
	X AXIS (mm)	Y AXIS (mm)	X AXIS (mm)	Y AXIS (mm)	X AXIS (mm)	Y AXIS (mm)
1	2.54	0	2.54	-1.27	2.54	-2.54
2	0	0	0	-1.27	0	-2.54
3	-2.54	0	-2.54	-1.27	-2.54	-2.54
4	-	-	-2.54	1.27	-2.54	0
5	-	-	0	1.27	0	0
6	-	-	2.54	1.27	2.54	0
7	-	-	-	-	2.54	2.54
8	-	-	-	-	0	2.54
9	-	-	-	-	-2.54	2.54



THIS INFORMATION IS CONFIDENTIAL AND PROPRIETARY TO TYCO ELECTRONICS CORPORATION AND ITS WORLDWIDE SUBSIDIARIES AND AFFILIATES (TE). IT MAY NOT BE DISCLOSED TO ANYONE OTHER THAN TE PERSONNEL, WITHOUT AUTHORIZATION FROM TE (www.te.com).

01	DUK-72673	JCB	JP	RJM	CEO	17/03/2021
ISSUE	CHANGE NOTE	DRAWN	CHECKED	APP. ENG.	APP. MARKETING	DATE

BS8888	MATERIAL: SEE NOTE 5	FINISH: SEE NOTE 5	<p>DEUTSCH</p> <p>TE CONNECTIVITY UK LTD., ST. LEONARDS-ON-SEA, TN38 9RF, UK.</p>
THIRD ANGLE PROJECTION	TITLE: D369 SHIELDED PANEL MOUNT RECEPTACLE		
UNLESS OTHERWISE STATED: DIMENSIONS: mm [INCHES]	TYPE: CUSTOMER DRAWING		SHEET: 1 OF 2
IF IN DOUBT, ASK	SIZE: A3	SCALE: 3:1	ISSUE: 01
DRAWING NUMBER: 612847-ENV			

THIS INFORMATION IS CONFIDENTIAL AND PROPRIETARY TO TYCO ELECTRONICS CORPORATION AND ITS WORLDWIDE SUBSIDIARIES AND AFFILIATES (TE). IT MAY NOT BE DISCLOSED TO ANYONE OTHER THAN TE PERSONNEL, WITHOUT AUTHORIZATION FROM TE (www.te.com).

DRAWING NUMBER:  
**612847-ENV**

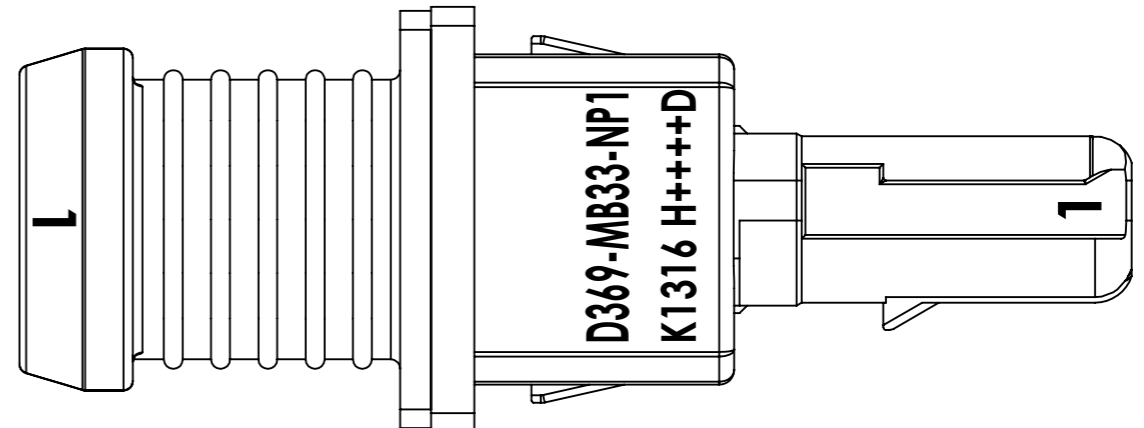
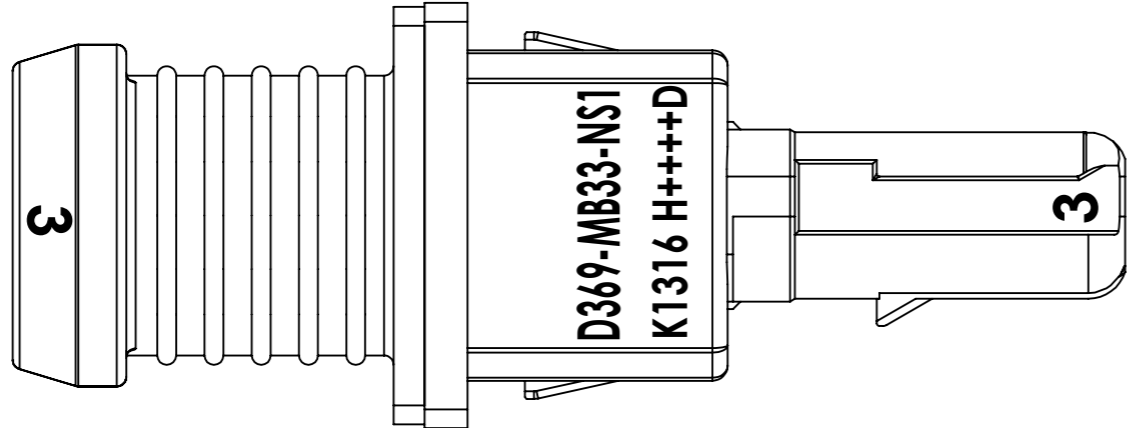
1 2 3 4 5 6 7 8

A  
B  
C  
D  
E  
F

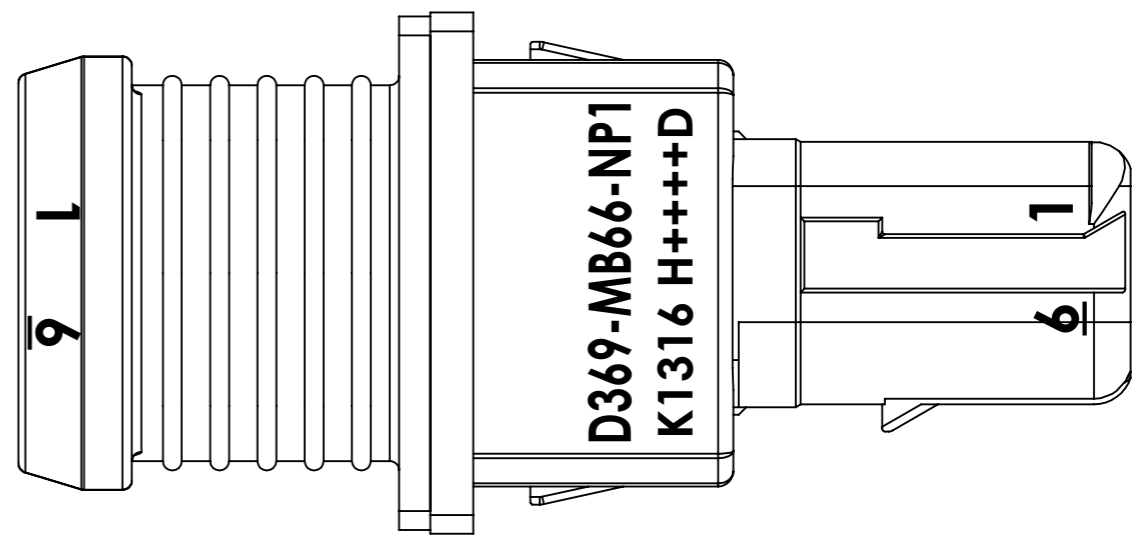
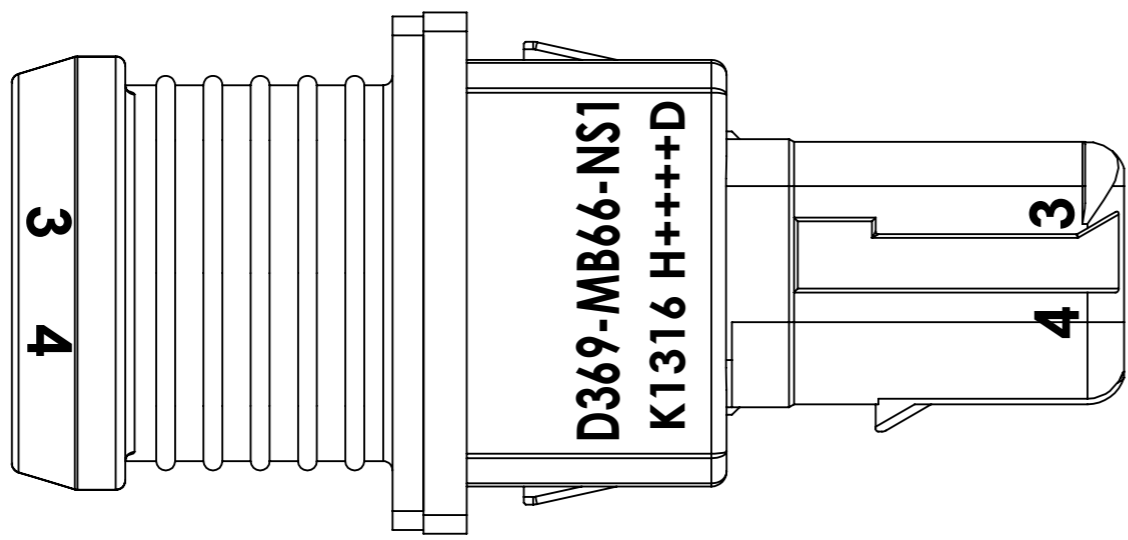
SOCKET/FEMALE CONTACTS

PIN/MALE CONTACTS

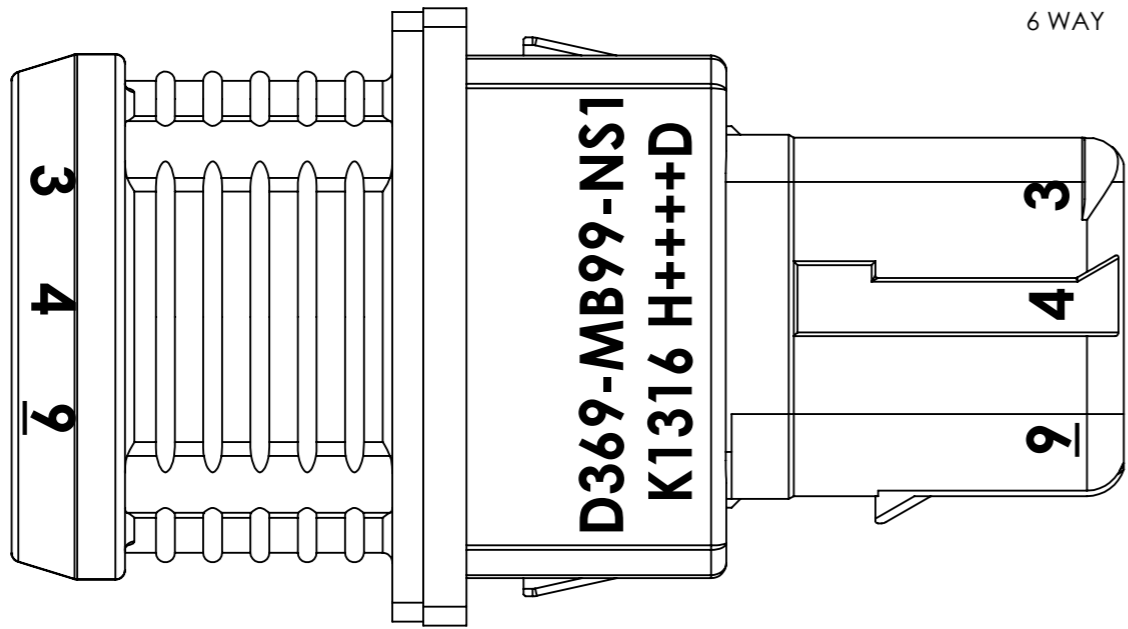
3 WAY



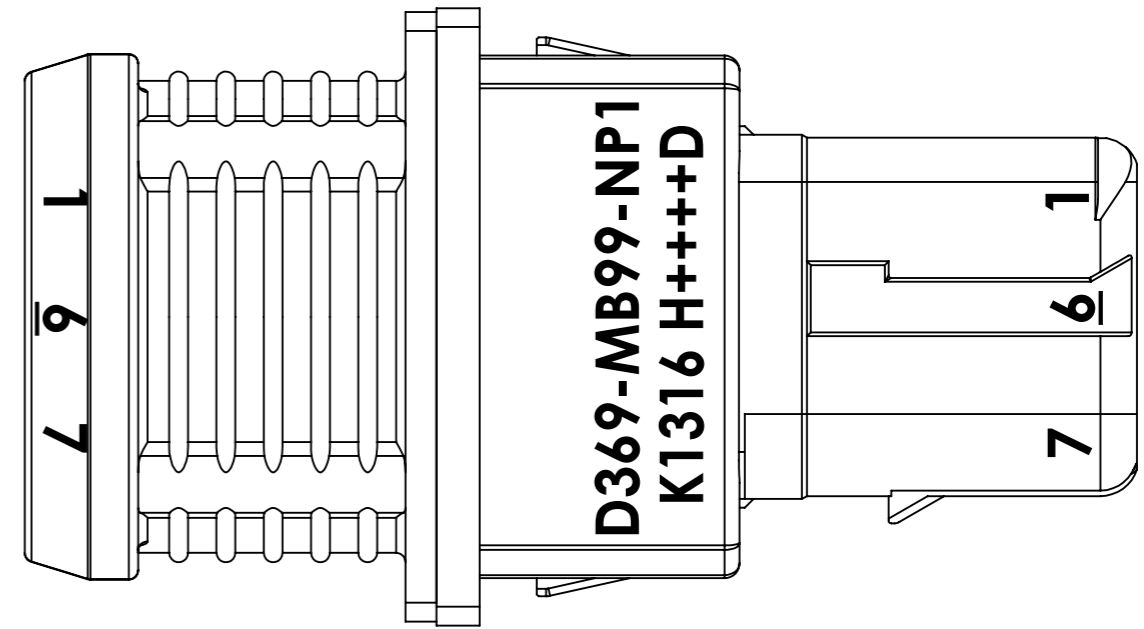
6 WAY



9 WAY



6 WAY



PART MARKING AND CAVITY ID DETAIL

THE CONNECTOR DESCRIBED ON THIS DRAWING SHALL MEET THE QUALIFICATION REQUIREMENTS AS OUTLINED IN TE QTP 109-163002

BS8888 THIRD ANGLE PROJECTION	MATERIAL: <b>SEE NOTE 5</b>	FINISH: <b>SEE NOTE 5</b>	 <b>DEUTSCH</b> TE CONNECTIVITY UK LTD., ST. LEONARDS-ON-SEA, TN38 9RF, UK.
	TITLE: <b>D369 SHIELDED PANEL MOUNT RECEPTACLE</b>		
UNLESS OTHERWISE STATED: DIMENSIONS: mm [INCHES]	SIZE: <b>A3</b>	SCALE: <b>5:1</b>	DRAWING NUMBER: <b>612847-ENV</b>
IF IN DOUBT, ASK	SHEET: <b>2 OF 2</b>	ISSUE: <b>01</b>	

1 2 3 4 5 6 7 8