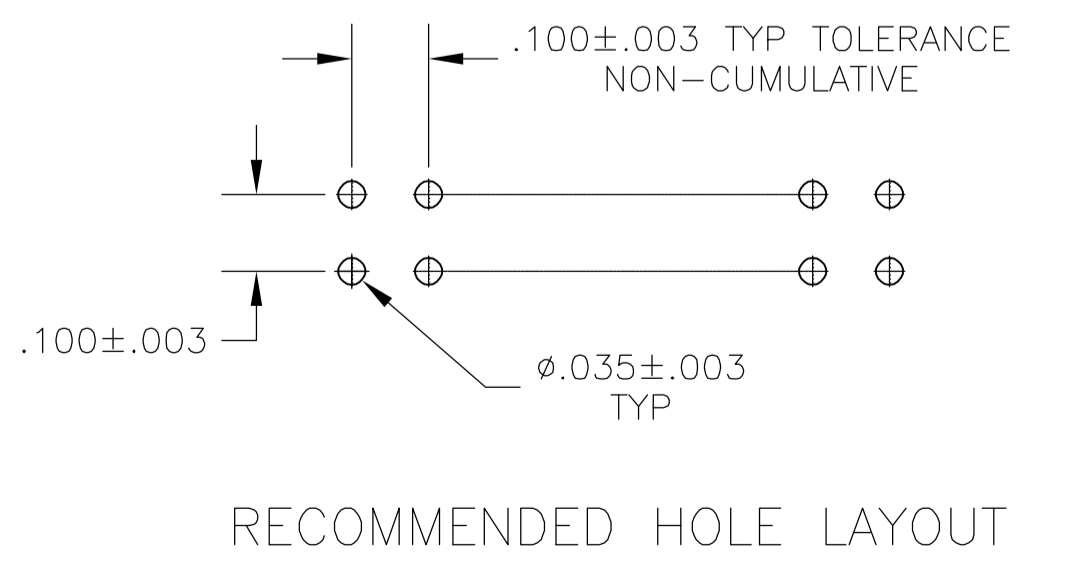
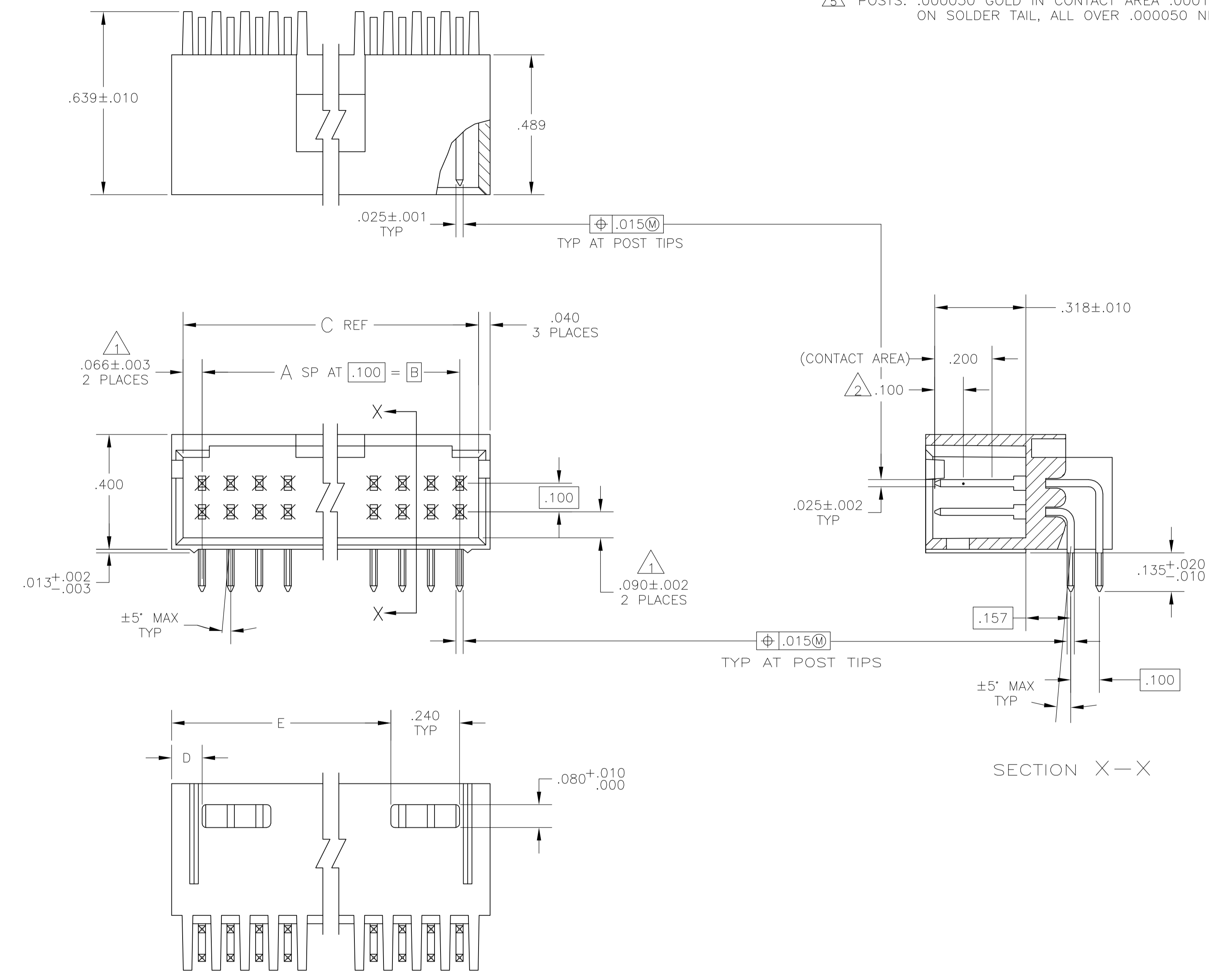


- 1 THE NOTED DIMENSION APPLIES AT THE INTERSECTION OF THE POST AND HOUSING
- 2 POINT OF MEASUREMENT FOR PLATING THICKNESS.
- 3 PACKAGED IN SINGLE TUBES
- 4 POSTS: .000030 GOLD IN CONTACT AREA .000100-.000200 MATTE TIN LEAD ON SOLDER TAIL, ALL OVER .000050 NICKEL
- 5 POSTS: .000030 GOLD IN CONTACT AREA .000100-.000200 MATTE TIN ON SOLDER TAIL, ALL OVER .000050 NICKEL



PLATING	E	D	C	B	A	NO OF POSN	ASSEMBLY PART NUMBER
5	3.506	.106	.332	.200	2	6	8-103166-6
5	3.406	.106	3.632	3.600	36	74	8-103166-5
5	3.306	.106	3.532	3.400	35	72	8-103166-4
5	3.206	.106	3.432	3.300	34	70	8-103166-3
5	3.106	.106	3.332	3.200	33	68	8-103166-2
5	3.006	.106	3.232	3.100	32	66	8-103166-1
5	2.906	.106	3.132	3.000	31	64	8-103166-0
5	2.806	.106	3.032	2.900	30	62	7-103166-9
5	2.706	.106	2.932	2.800	29	60	7-103166-8
5	2.606	.106	2.832	2.700	28	58	7-103166-7
5	2.506	.106	2.732	2.600	27	56	7-103166-6
5	2.406	.106	2.632	2.500	26	54	7-103166-5
5	2.306	.106	2.532	2.400	25	52	7-103166-4
5	2.206	.106	2.432	2.300	24	50	7-103166-3
5	2.106	.106	2.332	2.200	23	48	7-103166-2
5	2.006	.106	2.232	2.100	22	46	7-103166-1
5	1.906	.106	2.132	2.000	21	44	7-103166-0
5	1.806	.106	2.032	1.900	20	42	6-103166-9
5	1.706	.106	1.932	1.800	19	40	6-103166-8
5	1.606	.106	1.832	1.700	18	38	6-103166-7
5	1.506	.106	1.732	1.600	17	36	6-103166-6
5	1.406	.106	1.632	1.500	16	34	6-103166-5
5	1.306	.106	1.532	1.400	15	32	6-103166-4
5	1.206	.106	1.432	1.300	14	30	6-103166-3
5	1.106	.106	1.332	1.200	13	28	6-103166-2
5	1.006	.106	1.232	1.100	12	26	6-103166-1
5	.906	.106	1.132	1.000	11	24	6-103166-0
5	.806	.106	1.032	.900	10	22	5-103166-9
5	.406	.932	.800	8	18	5-103166-7	
5	.306	.832	.700	7	16	5-103166-6	
5	.206	.732	.600	6	14	5-103166-5	
5	.206	.632	.500	5	12	5-103166-4	
5	.206	.532	.400	4	10	5-103166-3	
5	.106	.432	.300	3	8	5-103166-2	
5	.106	.332	.200	2	6	5-103166-1	
4	3.506	.106	3.732	3.600	36	74	3-103166-5
4	3.406	.106	3.632	3.500	35	72	3-103166-4
4	3.306	.106	3.532	3.400	34	70	3-103166-3
4	3.206	.106	3.432	3.300	33	68	3-103166-2
4	3.106	.106	3.332	3.200	32	66	3-103166-1
4	3.006	.106	3.232	3.100	31	64	3-103166-0
4	2.906	.106	3.132	3.000	30	62	2-103166-9
4	2.806	.106	3.032	2.900	29	60	2-103166-8
4	2.706	.106	2.932	2.800	28	58	2-103166-7
4	2.606	.106	2.832	2.700	27	56	2-103166-6
4	2.506	.106	2.732	2.600	26	54	2-103166-5
4	2.406	.106	2.632	2.500	25	52	2-103166-4
4	2.306	.106	2.532	2.400	24	50	2-103166-3
4	2.206	.106	2.432	2.300	23	48	2-103166-2
4	2.106	.106	2.332	2.200	22	46	2-103166-1
4	2.006	.106	2.232	2.100	21	44	2-103166-0
4	1.906	.106	2.132	2.000	20	42	1-103166-9
4	1.806	.106	2.032	1.900	19	40	1-103166-8
4	1.706	.106	1.932	1.800	18	38	1-103166-7
4	1.606	.106	1.832	1.700	17	36	1-103166-6
4	1.506	.106	1.732	1.600	16	34	1-103166-5
4	1.406	.106	1.632	1.500	15	32	1-103166-4
4	1.306	.106	1.532	1.400	14	30	1-103166-3
4	1.206	.106	1.432	1.300	13	28	1-103166-2
4	1.106	.106	1.332	1.200	12	26	1-103166-1
4	1.006	.106	1.232	1.100	11	24	1-103166-0
4	.906	.106	1.132	1.000	10	22	103166-9
4	.806	.106	1.032	.900	9	20	103166-8
4	.406	.932	.800	8	18	103166-7	
4	.306	.832	.700	7	16	103166-6	
4	.306	.732	.600	6	14	103166-5	
4	.206	.632	.500	5	12	103166-4	
4	.206	.532	.400	4	10	103166-3	
4	.106	.432	.300	3	8	103166-2	
4	.106	.332	.200	2	6	103166-1	

THIS DRAWING IS A CONTROLLED DOCUMENT.

DIMENSIONS: INCHES	TOLERANCES UNLESS OTHERWISE SPECIFIED:	0 PLC ± -	1 PLC ± -	2 PLC ± -	3 PLC ± -	4 PLC ± .005	ANGLES ± -
--------------------	--	-----------	-----------	-----------	-----------	--------------	------------

MATERIAL: HOUSING: THERMALLY STABILIZED POLYESTER BRONZE POSTS: PHOS BRONZE FINISH: SEE TABLE WEIGHT: -

APPROVED: R FLICKER 29 JUL 87

TYCO ELECTRONICS CORPORATION, Harrisburg, Pa 17105-3608

HDR ASSY, MOD II, SHROUDED, 4 SIDES, DBL ROW, .100X.100 RIGHT ANGLE, W/ .025 SQ POSTS

SIZE: A1 CASE CODE: 00779 DRAWING NO: 103166 RESTRICTED TO: -

CUSTOMER DRAWING SCALE: 4:1 SHEET: 1 OF 1 REV: K