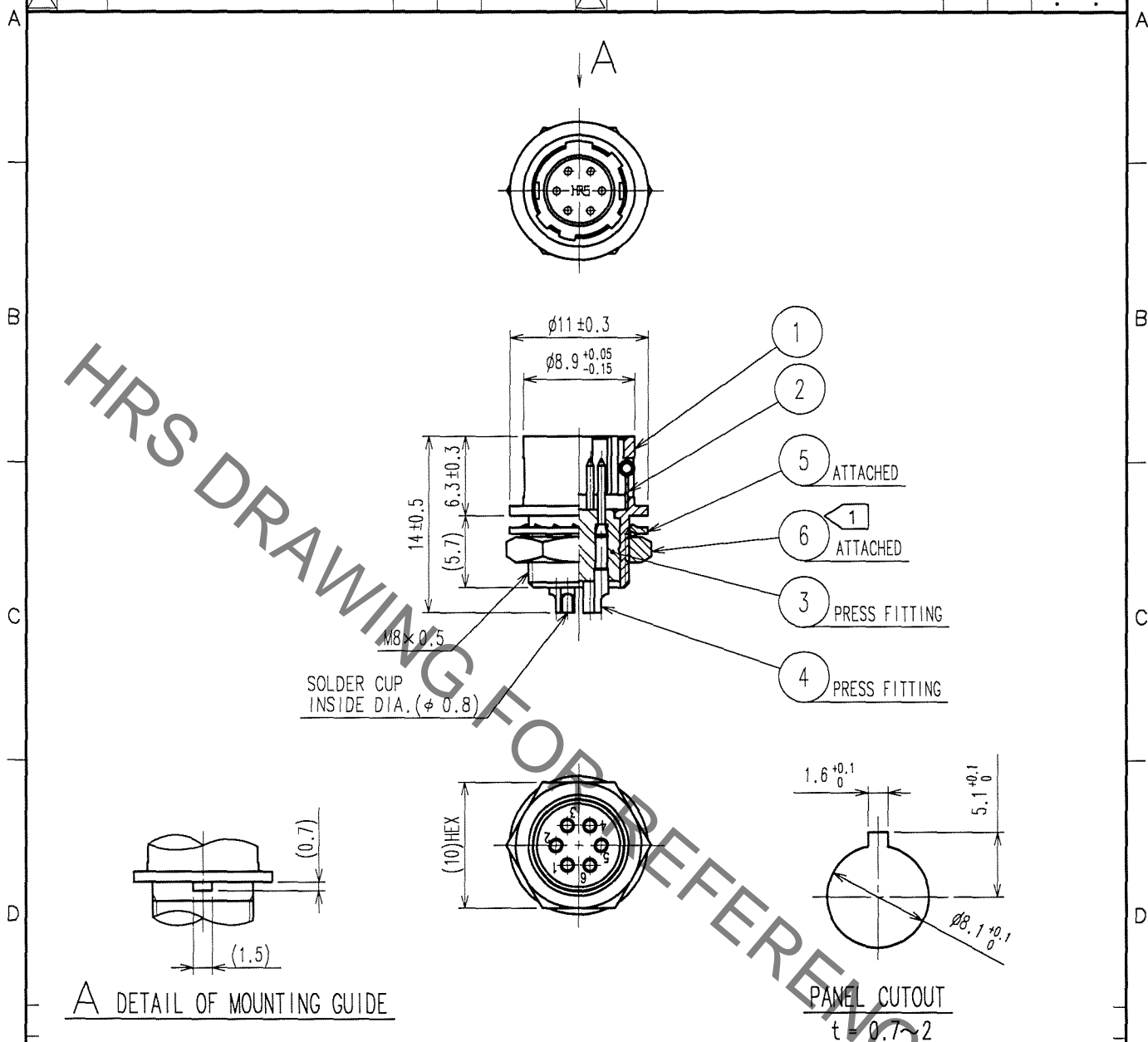


1					2			3			4		
	COUNT	DESCRIPTION OF REVISIONS	BY	CHKD	DATE		COUNT	DESCRIPTION OF REVISIONS	BY	CHKD	DATE		
△					. .	△					. .		
△						△					. .		
△						△					. .		



A DETAIL OF MOUNTING GUIDE

NOTE ① THE RECOMMENDED CLAMP TORQUE OF REF. NO. ⑥ TO BE 1.5 N · m.
LOCTITE 242, HENKEL JAPAN OR EQUIVALENT IS RECOMMENDED TO
PREVENT REF. NO. ⑥ FROM LOOSENING.

3	POLYAMIDE	(BLUE)	6	BRASS	NICKEL PLATING
2	STAINLESS STEEL		5	PHOSPHOR BRONZE	NICKEL PLATING
1	ZINC ALLOY	MATTE FINISH NICKEL PLATED	4	BRASS	GOLD PLATING 0.2μm min. NICKEL UNDER PLATING 2μm min.
NO.	MATERIAL	FINISH, REMARKS	NO.	MATERIAL	FINISH, REMARKS

CODE NO. (OLD) CL	DRAWN D. Matsume 05.11.19	DESIGNED D. Matsume 05.11.19	CHECKED E. Kunita 05.11.22	APPROVED M. Sato 05.11.24	RELEASED
----------------------	---------------------------------	------------------------------------	----------------------------------	---------------------------------	----------

SCALE 2 : 1	DRAWING NO. EDC4-007769-73	PART NO. HR10-7R-6P(73)
UNITS mm	HIROSE ELECTRIC CO., LTD.	CODE NO. CL110-0034-8-73

TO
R