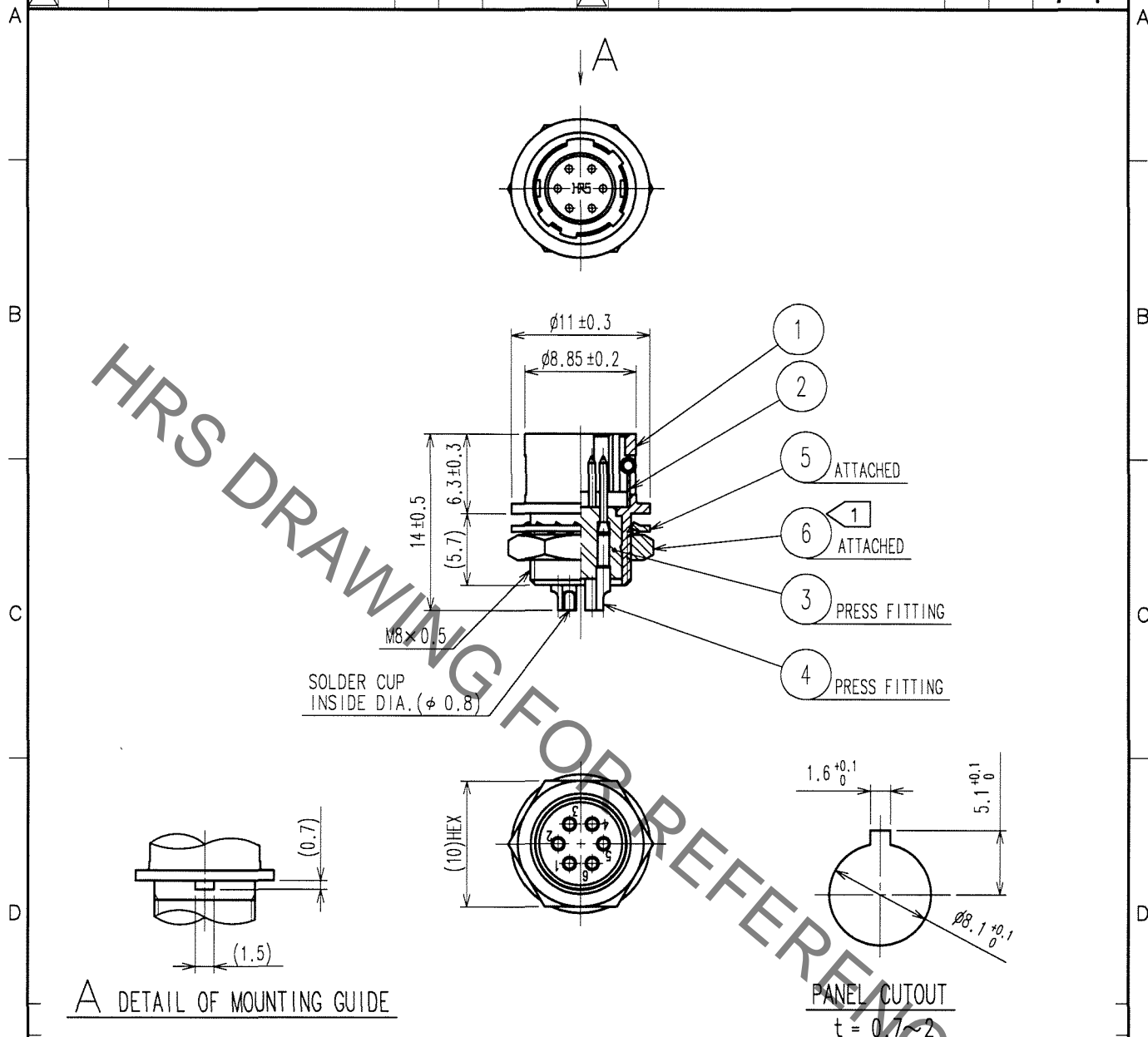


1			2			3			4		
COUNT	DESCRIPTION OF REVISIONS	BY	CHKD	DATE	COUNT	DESCRIPTION OF REVISIONS	BY	CHKD	DATE	COUNT	DESCRIPTION OF REVISIONS
△					△					△	
△					△					△	
△					△					△	



NOTE 1 THE RECOMMENDED CLAMP TORQUE OF REF. NO. ⑥ TO BE 1.5 N · m.
LOCTITE 242, HENKEL JAPAN OR EQUIVALENT IS RECOMMENDED TO
PREVENT REF. NO. ⑥ FROM LOOSENING.

3	POLYAMIDE	(BLACK) UL94V-0	6	BRASS	NICKEL PLATING
2	STAINLESS STEEL		5	PHOSPHOR BRONZE	NICKEL PLATING
1	ZINC ALLOY	MATTE FINISH NICKEL PLATED	4	BRASS	SILVER PLATING 2μ m min.
NO.	MATERIAL	FINISH, REMARKS	NO.	MATERIAL	FINISH, REMARKS

CODE NO. (OLD) CL	DRAWN D. Matsume 05.11.17	DESIGNED D. Matsume 05.11.18	CHECKED E. Kunita 05.11.22	APPROVED M. Sato 05.11.24	RELEASED
----------------------	---------------------------------	------------------------------------	----------------------------------	---------------------------------	----------

SCALE 2 : 1	DRAWING NO. EDC4-020541-73	PART NO. HR10A-7R-6P(73)
UNITS mm	HRS HIROSE ELECTRIC CO., LTD.	CODE NO. CL110-0308-1-73